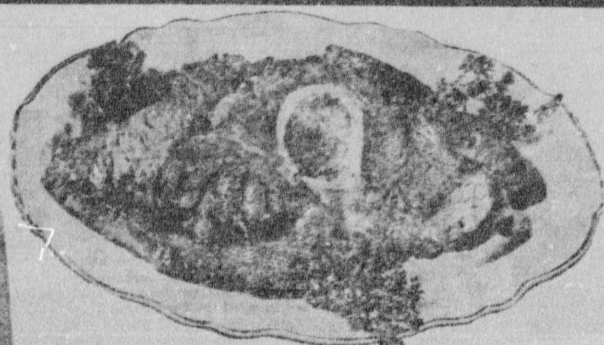


MARKETS OPEN 'TIL MIDNITE

BOYS
Crenshaw & Rodeo Rd.
OPEN
24 HOURS

TOP QUALITY
BERRIES
23^c
12-OZ.
BSKT.



TENDER, JUICY, THICK CUT-BONE IN

SWISS STEAK 59^c LB.

BEECHNUT
Baby Food
8^c
Z. JAR

TENDER JUICY FULL CUT BONE IN
ROUND STEAK

69^c lb.

BONELESS TOP & BOTTOM
ROUND STEAK

89^c lb.

BONELESS TENDER JUICY
ROUND STEAK

79^c lb.

TENDER LEAN
BONELESS SIRLOIN TIP STEAK

95^c lb.

TENDER LEAN
BONELESS CUBE STEAKS

95^c lb.

BONELESS TENDER JUICY
SIRLOIN TIP ROAST

89^c lb.

Boneless Lean Tender
Breakfast Steak

\$1.09 lb.

TENDER JUICY
RUMP ROAST
USDA CHOICE
Bone in
69^c lb.

BONELESS
TOP SIRLOIN
USDA CHOICE
TENDER JUICY
\$1.29 LB.

A PINA
PIRUR
2¹/₂ LB. BAG
\$1.49

Boys
Shortening
3 LB. CAN
59^c

GROUND ROUND
FRESH HOURLY
69^c lb.

MORRELL'S YORKSHIRE
SLICED BACON
49^c

SWIFT'S PREMIUM
SLICED BACON 59^c lb.

FRESH FROZEN
SLICED NORTHERN
HALIBUT STEAK 59^c lb.

STREAM FRESH
BRAND
MOUNTAIN TROUT
12 oz. Pkg. 59^c

AN
USA
5 for \$1

CYPRESS GARDEN
Orange Juice
FROZEN
6-OZ. CAN
15^c

Fabulous Delicatessen

RUBENS ALL BEEF Salami 69^c lb.

LEO'S

- SLICED BEEF
- HAM
- DARK TURKEY
- SPICY OR CORNED BEEF
- WHITE MEAT TURKEY 45c PKG.

33^c Pkg.

RED-E-SERVE
POLISH KIELBASA SAUSAGE 8 oz. Pkg. 69^c lb.

CAL ROSE
RICE
25 LB. BAG
\$2.69

SPRINGFIELD
CATSUP
12-OZ. BTL.
\$1

C-H-FRENCH OR ITALIAN
DRESSING 8 OZ. BTL.
19^c

SPRINGFIELD 48-OZ. CAN
PINEAPPLE JUICE 29^c

FOR A TIDY, HAPPY PET
VET'S BURGERS 18 oz. Pkg. 39^c

WHITE FELLOW
ALB. CORN MEAL 20-oz. Pkg. 19^c

BLU-JONNI
MARGARINE 1 lb. Ctn. 29^c

Fresh Bakery Goods

JUMBO APPLE PIE
Special 59^c

CARNATION
Canned Milk
2 Tall Cans 14 oz.
25^c

LIQUOR DEPT.

100% NEUTRAL GRAIN SPIRITS
KAMCHATKA
VODKA 80 Proof \$3.59 Full Fifth

Charter Oak—80 Proof
Straight Bourbon \$3.99 Full 5th

LIGHT or DARK
Bacardi Rum 80 Proof \$4.79 Full 5th

B & W WINE \$1.49 Gal.
• Burgundy • Rose • Sauterne

| | | |
|-----------------------|-------------------------------|--------------------|
| 5-oz. SALAD DRESSINGS | MARSCO—Frozen PASTRY CHEF | HILLS BROS. COFFEE |
| • FRENCH 29c | 20-oz. Mock Boston Pie 89c | 1 lb. 83c |
| • CATALINA 29c | 17-oz. Banana Cream Cakes 89c | 1 lb. \$1.65 |
| • MIRACLE 29c | 18-oz. Cinnamon Danish | 1 lb. Can \$2.39 |
| • CASINO 39c | Coffee Cakes 79c | |
| • ITALIAN 39c | | |
| • PASTRY 39c | | |
| • ROKO 45c | | |

Fresh-Frozen Foods

ROYAL GARNET
GRAPE JUICE 6 6-oz. Cans for \$1

CERTIFRESH 8-OZ. PKG.
FISH STICKS 3 for \$1

REDS... 8/4-OZ. PER PKG.
TAMALES 89^c

CERTIFRESH BREADED
SHRIMP 1 1/2 lb. Pkg. \$1.49

FROM BIRDSEYE

- BUTTER BEANS
- CUT CORN
- MIXED VEGETABLES
- CUT BROCCOLI

5 19 OZ. FOR \$1

DAILY DIET
DOG FOOD
15 OZ. CAN
5^c

TORONTO: Normandie & Carson (OPEN 'TIL MIDNITE)
REDONDO: Manhattan Beach and Inglewood (OPEN 'TIL 10 P.M.)

GARDENA: Redondo Beach & Van Ness (OPEN 'TIL MIDNITE)
HERMOSA BEACH: Prospect & Pier Ave. (OPEN 'TIL 10 P.M.)



AD GOOD 7 FULL DAYS
THURS. APR. 29 THRU WED. MAY 5