

'Sound of Music' Cast Rehearses at El Camino

Each afternoon in April the El Camino College theater is transformed into a child sitting agency with the arrival of seven singing 'von Trapp' children.

The set, with other members of the cast, is busy engaged in rehearsing for the college spring musical, "The Sound of Music."

The production, opening May 6, features seven youngsters in roles as the family von Trapp.

For the general public wishing to see the singing youngsters, their charming mother, Maria, and others in the extensive cast, ticket sales will begin tomorrow. Mail orders accompanied by check and self-addressed envelope will be accepted, if time permits.

PLAYING THE oldest daughter in the production is Judy Graham as Leisel. Miss Graham is a second semester pre-nursing student at El Camino.

"The most exciting thing about playing Leisel is that she is younger than I am. Leisel is 'sixteen going on seventeen' while I am eighteen going on nineteen," Miss Graham quipped.

Characterizing the first son, Friedrich, is Mike Mullen. Friedrich is 14 and Mullen is 21. "It's an eerie sensation, losing seven years at one audition," Mullen explained.

PLAYING THE number two son, Kurt, is Mark Elmgren, a seventh grade student at Henry Clay Junior High. Elmgren is one of the few children playing his right age. "I'm thirteen — almost," the youthful actor said.

The son of the El Camino coordinator of the division of industry and technology, Kurt has never been in a play. The part "brings out the best in me—Kurt is sort of a brat," young Elmgren commented.

Louisa is played by Yolanda Hernandez, a fifth grade student at Nativity School in Torrance. "I like

the whole play because it has a lot of singing and I like to sing, but I like the concert scene the best," she said.

DEBORAH Lowgren plays the part of Brigitta, a sweet, angelic-type. Miss Lowgren is a third-grade student at Nativity School. "I think the lonely goat-herd scene is the most exciting because we get to jump on the bed and have lots of fun," Brigitta remarked.

Julie Ferguson, a returnee to the El Camino stage, takes

the role of Marta in the production. She is the daughter of the play director, Burnett Ferguson, and is in the fifth grade at Lee Elementary School in Long Beach.

"I like Marta because she likes the same things I like: she's nice. I think everyone will like the play because it's a lot of fun," the 'old pro' commented.

GRETIL is played by Patricia Terry, a first-grade student at Seaside Elementary School. "My favorite part is

being scared in the lightning and thunder scene. I also like to dance and there is lots and lots of waltzing and marching. That's fun," Miss Terry said.

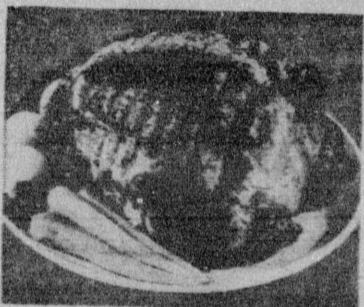
When asked who her favorite character in the play was, Gretel added "I like Leisel the best—she's bigger than me."

"Senior citizens" of the cast include Mimi Castleberry-Phillips as Maria; Frank Ruiz as the Captain; Mike England as Rolf Gruber; Carol Neblett as Elsa; Chick Cordell as Max Detweiler and Margaret David as Mother Abbess.

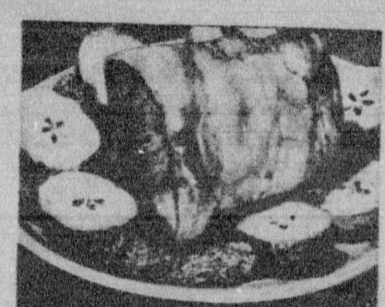
CHORAL direction for the production is handled by Ernest Mikkelsen, with James Mack, orchestra director; Les Thomas, technical director and Robert G. McKinnon, times.

Special! "Modern Maid" by PIONEER
30 Gallon WATER HEATER
 10 YEAR WARRANTY!
48⁹⁸
 SAME DAY INSTALLATION
LEONARDS
 TORRANCE STORE
 25405 Crenshaw Blvd.
 DA 5-4911 — SP 5-2676

SAFeway ...for tonight's dinner...add a fresh touch



Boneless Roasts
 U.S.D.A. Choice Beef
 • Sirloin Tip Roast
 • Rump Roast
 • Round Roast
 Year Choice **lb. 89¢**



Pork Loin Roast
 First 6-rib end cut from selected, Eastern, Grain Fed Young Porks. Tender, juicy
lb. 37¢



Russet Potatoes
 U.S. No. 1 Russets, Northwest grown. Excellent to bake, boil or fry.
10-lb. bag 89¢



Fresh Tomatoes
 Vine ripened, firm flavorful tomatoes just right for slicing. Packed in cello.
13-oz. pkg. 29¢

Boneless Steaks
 U.S.D.A. Choice Beef
 • Sirloin Tip Steak
 • Full Cut Round Steak
 • Top Round Steak
 Year Choice **lb. 89¢**

Pre-Carved Roast
 End Pork Chops
 Rib Pork Chops
 Loin Pork Chops
 Pork Loin End Sliced, Tied **lb. 49¢**
 Large Loin end cut **lb. 49¢**
 Center cut **lb. 69¢**
 Center cut **lb. 79¢**

Bananas Fancy South American Plantation packed **3 lbs. 39¢**
Mushrooms Brown or white. Fine with steaks. **1/2-lb. for 33¢**
Apples Washington State Extra Fancy Red Delicious **5 lbs. \$1**
Navel Oranges Large Size Sweet and Juicy **6 lbs. \$1**

Radishes or Green Onions **3 bun. 19¢**
Cucumbers Green Slicers **2 for 29¢**
Yellow Onions **3 lbs. 25¢**
Celery Fresh, crisp Tender **each 25¢**
Boiling Onions **1-lb. bag 19¢**
Carrots Packaged Fresh daily **2-lb. bag 25¢**

Corned Beef Boneless Bracket Satisfying or McCoy's **lb. 69¢**
Roasters Fresh King Size Grade A Chickens Lancaster Farms, 4 to 5-lb. Avg. **lb. 49¢**
Sliced Bacon Lora's First Quality Just Right Flavor **1-lb. pkg. 59¢**
Sliced Liver Fresh Baby Beef Fine with Bacon **lb. 59¢**

Beef Sausage McCoy's Breakfast 1-lb. roll **39¢**
Jumbo Bologna In the piece **lb. 39¢**
Liver Sausage Fresh in piece **lb. 39¢**
Cod Fillets Captain's Choice **1-lb. pkg. 49¢**
Shrimp Captain's Choice Breaded **10-oz. pkg. 69¢**

Take Me Out to the Ball Game
Peanuts Salted or Roasted **12-oz. pkg. 39¢**

This coupon worth **20¢** toward the purchase of **2 BLUE HEAVEN POT HOLDERS**
 Regular price **2 for 75¢**
 Less coupon value **20¢**
 With this coupon **ONLY 2 for 59¢**
 GOOD TWO WEEKS: April 19, thru May 2, 1965

Armeo Fills Steel Order Through AID

A United States development loan to Turkey provided financing for a \$184,152 order filled by Armeo Steel Corporation's National Supply Division plant here, the Agency for International Development has reported.

The Torrance order is part of an Armeo contract from Turkey for a drilling rig and accessories.

The foreign aid loan enables Turkey to import, entirely from the United States, up to \$70 million in selected commodities and equipment required for industrial and agricultural development.

The credits cover industrial equipment, yarns and manufactured textile fibers, iron and steel products, motor vehicle parts, lubricants, chemicals, and rubber products.

American firms produce more than 90 per cent of all goods bought by developing countries through AID financing, with the yearly U.S. volume of AID program exports now at a billion dollar level.

there is **ONLY ONE**

Welcome Wagon International, with over 5,000 hostesses, has more than thirty years experience in fostering good will in business and community life. For more information about...

Call **DORIS STAMM**
 DA 7-9193

Save Money...Shop Safeway!

Union Sugar Granulated **5-lb. bag 39¢**
Crisco Vegetable Shortening For baking or frying **3-lb. can 69¢**
Apple Sauce Town House **3 25-oz. jars 89¢**
Soft Drinks Crispment Regular, Lo-Cal **12 cans \$1**
Peaches Gardenwise Freestones Tender Segments **4 29-oz. cans \$1**
Bleach White Magic Liquid Packed in glass gallon bottle **39¢**

Messies Napkins Super, V-Form or Regular **pkg. of 12 39¢**
Gaines Burgers Compressed Dog Food **2 18-oz. pgs. 89¢**
Gaines Meal Dry Type Dog Food **5-lb. pkg. 75¢**
Listerine Antiseptic For Oral Use **14-oz. bottle 79¢**
Colgate Toothpaste Includes Sc aft **5-oz. tube 56¢**

Mrs. Wright's Baked Foods

Cheese Bread
 This delicious cheese loaf is topped with cheddar cheese. Excellent toasted or ideal for ham sandwiches. Packed in poly bag.
35¢ each
3 1-lb. loaves \$1

Fresh Donuts Baker's Dozen, Choice of plain or sugared **pkg. of 12 35¢**
Coffee Cakes Bear Claws (24), Butterfly Rolls (18), Raisin Date Seal (12) **pkg. 29¢**
Lemon Coconut Cake Two layer **each 65¢**
Soft Twist Bread White or Wheat Sandwich Round Top **3 loaves 79¢**

Dairy & Delicatessen
Shady Lane Butter First quality Freshly churned **1-lb. pkg. 69¢**
Longhorn Cheese Whole milk Mild Cheddar **lb. 59¢**
Borden's Biscuits Big Top, Flaky or Buttermilk **2 9 1/2-oz. pgs. 33¢**
Butter Lucerne Grade AA **1-lb. can. 73¢**
Sour Cream Lucerne Pint, 47¢ **ctn. 25¢**
Yogurt Lucerne Plain or Flavored **1 1/2-pt. ctn. 19¢**
Peanut Butter Lucerne **16-oz. ctn. 45¢**
Orange Juice Lucerne Fresh **qt. can. 45¢**

BIG FROZEN FOOD SALE!
Bel-air Waffles Just pop in toaster **5-oz. pkg. 10¢**
Orange Juice Bel-air Concentrated **5 6-oz. cans \$1**
Chocolate Cake Sara Lee German **13-oz. size 79¢**
Oh Boy Pizza Cheese **9 1/2-oz. 39¢** Deluxe **9 1/2-oz. 49¢**
Sara Lee Rolls Dinner, Finger or Parkerhouse **pkg. of 12 49¢**

Vacuum Sealed Vegetables
Green Beans Bel-air Gliced **3 8-oz. pgs. \$1**
Golden Corn Bel-air cut **3 10-oz. pgs. \$1**
Niblets Corn Green Giant **3 10-oz. pgs. \$1**
Mexicorn Green Giant **3 10-oz. pgs. \$1**

Stokely's Finest Canned Foods

Fruit Cocktail Stokely's **5 17-oz. cans \$1**
Applesauce Stokely's Finest **2 17-oz. cans 37¢**
Beans Stokely's Shellie Finest Quality **2 14-oz. cans 45¢**
Green Beans Stokely's **2 8-oz. cans 29¢**
Green Peas Stokely's Finest **17-oz. can 23¢**
Grapefruit Stokely's Finest Fancy Segments **17-oz. can 27¢**

Kidney Beans Van Camp's **2 17-oz. cans 31¢**
Chili Con Carne IXL with Beans **4 15-oz. cans \$1**
Noodle-Roni Golden Grain **3 6-oz. pgs. \$1**
Scallop-Roni Golden Grain **3 7-oz. pgs. \$1**
Rice-A-Roni Golden Grain Chicken or Beef **3 8 1/2-oz. pgs. \$1**
Nestle's Quik Chocolate Mix Incl. Sc aft **1-lb. pkg. 39¢**
Cascade Detergent for Automatic Dishwashers * Includes Sc aft **20-oz. pkg. 29¢**
Dial Soap Deodorant Type Gold, Green, Pink **2 11 1/2-oz. bars 29¢**
Sta-Puff Rinse Softens Clothes Includes Sc aft **4-oz. bottle 39¢**
Goodwin's Ammonia **4-oz. bottle 25¢**

Sego Diet Food
 Chocolate Coconut, Chocolate Malt, Chocolate Fudge, Vanilla, Pineapple, Banana, Orange, Strawberry, Cherry
3 10-oz. cans 79¢

Prices are effective Thurs. thru Sun., April 22-25, 1965 at your local Safeway Store

SAFeway

TORRANCE: 4705 Torrance Blvd., also Western and Carson
 REDONDO BEACH: 245 Palos Verdes at Catalina
 LOMITA: Pacific Coast Hwy. at Narbonne