

CARPET NEED CLEANING?

FR 1671

Spencer's RUG CLEANERS

5555 WILSON BLVD. TORRANCE

Gymnastics Champ Plans North Visit

Muriel Grossfeld, three-time member of the United States Olympic team and national all-around AAU women's gymnastics champion, will appear Friday at North High.

The gymnast will speak to students and demonstrate skills in gymnastics during a 2 p.m. assembly at the school.

Miss Grossfeld currently is working on the President's Council on Physical Fitness.

Solons Eye Overhaul of Health, Welfare Program

By VINCENT THOMAS
Assemblyman, 68th District

The vast front over which the battles on welfare legislation will be waged during this session has been brought into sharp focus by a series of major measures just introduced by the Senate Fact Finding Committee on Labor and Welfare. Based on nearly two years of study and investigation, the 29 bills and resolutions are intended to reduce the cost of California's enormous welfare system.

The committee chairman assistance programs are the largest, most complex, and the costliest in the entire country." He called attention to the fact that the state budget for 1965-66 fixes the total to be spent for all such programs during the year at \$1.165 billion, from state, county, and federal funds. This astronomical total is based on a monthly average of 1,018,000 recipients of aid—about one Californian out of every 18.

The chairman charged that the last major piece of welfare legislation enacted had helped lower the standards of our state program to a "maintenance dole." The reference was to the hotly controversial Assembly Bill 59 of the 1963 session, which extended aid to dependent children of those families in which both parents are unemployed. I have written previously about the havoc this measure has caused in the

budgets of many county governments.

THE PURPOSE of the committee's series of measures are manifold. First, they are designed to reduce current and future welfare costs to all levels of government. Second, they are intended to assist recipients to gain independence more quickly through self-care and self-support. Third, they would extend aid to some needy persons now ineligible for as-

stance under any program.

Many of the more important measures which make up the series relate to the program for aid to dependent children. One would require that an unemployed parent must apply for work with the State Employment Service before making application for aid to dependent children, and must keep his registration active so long as aid is received. Another would deny aid to a family in which the parent is unemployed be-

cause he is on strike, and would also render ineligible for three months the family of a parent who voluntarily quits his job without good cause.

OTHER BILLS would make aid available for youths up to 21 instead of 18 years of age if they are in school or enrolled in approved job training programs. Still another would provide additional assistance in limited amounts to unemployed parents who are actively enrolled in job training projects.

Changes would also be made in other public assistance programs. One bill would establish a cost-reimbursing fee schedule for patients in nursing homes under the medical assistance for the aged system. Another would require adult children who are capable of doing so, to contribute to the support of parents receiving medical assistance for the aged.

One committee resolution is obviously controversial. It would declare that medical and welfare programs would furnish information on family planning, services, drugs, and materials to all persons who voluntarily request them, and that social work counselors should be free to volunteer information on such matters.

Hahn Opposes

Contract Let For Services At Hospital

A \$50,000 contract to initiate new cleaning and custodial techniques at Harbor General Hospital has been approved four to one by the Board of Supervisors.

Opposing the contract was Supervisor Kenneth Hahn who objected because the "Irwin Kee System has received a total of \$179,365 for similar contracts in other county buildings since 1958 and there's no reason why the techniques developed for one building cannot be used in others without paying more money for the same thing."

The contract is not for actual manpower, but for personnel training, scheduling of duties, and in some cases new equipment. The county maintains its own custodial personnel and approximately 350 employees are involved in cleaning county hospitals.

Hawthorne Contract Approved

Award of a \$640,856 contract for the improvement of Hawthorne Avenue from Newton Street in Torrance to Palos Verdes Drive North on the Palos Verdes Peninsula was approved by the Board of Supervisors yesterday.

Strecker Construction Co. of Long Beach submitted the low bid. The firm, one of nine competing for the massive street improvement project, submitted a bid of \$640,856.40.

Supervisor Burton W. Chace, chairman of the board, said the work will involve moving nearly 500,000 cubic yards of earth fill and nearly 500,000 square feet of concrete.

Torrance will contribute \$145,000 and Rolling Hills Estates \$60,000. The county will pay the remainder of the costs, Chace said.

The project will provide a fully curbed and divided highway with four lanes of traffic. Channelization, sidewalks, and driveway exits also are provided in the contract. Work is expected to be completed in April, 1968.

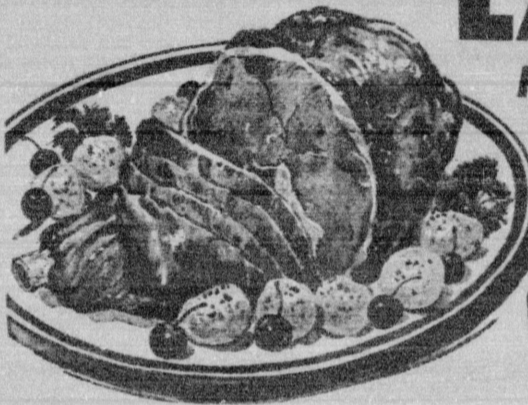
AYS at BETTER FOOD!



7 SALE DAYS

THURSDAY thru WEDNESDAY
APRIL 1 through 7, 1965

LEG O' LAMB
FRESH FROZEN



49¢
LB.

SIRLOIN LAMB ROAST... LB. 55¢ SIRLOIN LAMB CHOPS... LB. 79¢



SIRLOIN STEAKS
FULL CUT
U.S.D.A. CHOICE OR TABLE PRIDE
87¢
LB.

TAILS REMOVED ON STEAKS

T-BONE or CLUB... LB. 93¢
BONELESS STEAKS

SIRLOIN TIP... LB. 89¢
BONELESS

B-B-Q STEAKS... LB. 89¢
EXTRA TRIM/WASTE FREE

RUMP ROAST... LB. 79¢

EXTRA TRIMMED STEAKS

PORTERHOUSE... LB. \$1.09
TENDER LEAN

CUBE STEAKS... LB. 98¢
ROUND BONE

SWISS STEAKS... LB. 59¢
WASTE FREE BONELESS

ROUND STEAK... LB. 79¢

U.S. CHOICE or TABLE PRIDE
CHUCK STEAKS... LB. 39¢

ENGLISH CUT
BEEF ROAST... LB. 79¢
MADE FRESH EVERY HOUR

ROUND BONE
BEEF ROAST... LB. 55¢

GROUND CHUCK... LB. 59¢

TENDER/SLICED/STEER
BEEF LIVER... LB. 49¢

MOHRELL YORKSHIRE
SLICED BACON... PKG. 55¢

HOFFMAN'S LEAN
SMOKED PICNIC... LB. 35¢

CLOROX BLEACH FULL GALLON 69¢

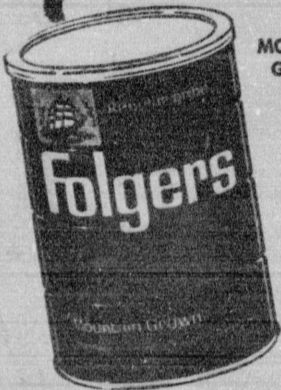
SCHILLING PURE BLACK
PEPPER 4-OZ. CAN 39¢

SUREX SOAP... 6 pak 49¢
CUDAHY SLICED DRIED BEEF, 2½-oz. Jar... 45¢
REALIME LIME JUICE, 8-oz. Bottle... 25¢
RICH'S WHIP TOPPING, 10-oz. Can... 49¢
RICH'S CHOCOLATE ECLAIRS, Pkg. of 4... 49¢

FOLGER'S COFFEE
You Save 14c a Pound!



AT BETTER FOOD YOU GET:
• VALUES
• PREMIUMS
• BLUE CHIP STAMPS



MOUNTAIN GROWN
FULL 1-LB. CAN

69¢
2 LB. CAN \$1.38

COMPARE ANYWHERE
"MARIBO" PATTERN • QUALITY

HEAVYWEIGHT LUXURY STAINLESS STEEL TABLEWARE **99¢** WITH COUPON

NO PURCHASE NECESSARY

4 PIECE PLACE SETTING OR 3 PIECE HOSTESS SET

This Coupon Worth **\$1.00**

Toward the purchase of 4-Pc. PLACE SETTING Maribo stainless steel tableware.

COUPON GOOD APRIL 1 thru 7, 1965

This Coupon Worth **\$1.00**

Toward the purchase of a 3-Piece Hostess Set (pierced server/sugar/spoon and butter spreader)

COUPON GOOD APRIL 1 thru 7, 1965

GOLDEN NUGGET MIXED NUTS FULL POUND CAN **69¢**

ARMOUR CANNED HAM
BONELESS • NO WASTE BUY NOW FOR EASTER

9-LB. CAN **\$5.98**

GRAND TASTE ALL BEEF FRANKS 12-OZ. PKG. 39¢

XLNT BEEF TAMALES 4 9-oz. oz. \$1 XLNT CHILI 1-LB. 69¢

SIoux BEE PURE HONEY 3 12-oz. Jars \$1

DEL MONTE SODA POP 12 ½-QT. BTLs. \$1

No Return Bottles

49c PUREX LIQUID BLEACH, Quart... 23c
49c NEWS DETERGENT, Giant Pkg. 45c
41c SNOW'S MINCED CLAMS, 7-oz. Can... 33c
29c SWIFT'S BABY MEATS, 3½-oz. Can... 2/53c
98c SWIFT'S JUNIOR MEATS, 3½-oz. Can... 2/53c

South Gate 4466 TWEEDY BOULEVARD OPEN DAILY 9 A.M. to 10 P.M.

Carson-Torrance 223rd ST. & AVALON OPEN DAILY 9 A.M. to 10 P.M.

Los Angeles S. WESTERN at SLAUSON OPEN 9 A.M. to MIDNIGHT SUNDAY: 9 A.M. to 9 P.M.

Torrance 5305 TORRANCE BLVD. OPEN DAILY 9 A.M. to MIDNIGHT

Hollywood 4317 BEVERLY BLVD. OPEN DAILY 9 A.M. to 2 A.M.

YAMAHA

YAMAHA Omaha Trailmaster

Model 90

100% Financing Available

Sales • Service • Parts

\$299.00 Base Price

THE FAMILY FUN CENTER

LAWDALE

CYCLE SHOP

15224 HAWTHORNE BLVD. LAWDALE, CALIFORNIA 91034