

# Telephone Center Keeps Electronic Eyes Alert

In a small room in Pacific Telephone's complex in downtown Los Angeles, an electronic watch-dog keeps 24-hour-a-day vigilance over all major long distance facilities serving the greater Los Angeles area.

This is the Los Angeles Toll Reports Center (LATRC).

Now approaching its third birthday, LATRC ("lay-trick") is capable of immediately detecting any major failure in

the vast communications network serving this area. Through its centralized detecting and reporting facilities, LATRC makes it possible for affected services to be rerouted often before the customer is aware of the failure.

THE NUCLEUS of the system is the Automatic Failure Indicator (AFI), a wall-mounted board composed of 10

horizontal rows and 16 vertical rows of lights.

When any break or other failure occurs in the communications network, an audible and visual signal is produced immediately on the AFI panel.

Through the pattern of lights produced on the AFI, the LATRC operator can instantly determine the type and routing of service affected and the approximate geo-

graphical location of the failure. SEVERAL types of alerting equipment make it possible for him to relay this information to emergency forces in the communications complex and in the field, and in most cases, restoration work begins almost immediately.

While it may take several hours to repair a cable break, customers are affected only during the time it takes to

reroute the circuits — usually only a matter of minutes.

From a bank of speakers near the LATRC console, the operator can listen in on 48 unmanned repeated huts in the area.

These huts contain the amplifiers which make it possible to transmit voice conversations over great distances.

At each station, super-sensitive microphones can pick

up foreign sounds from within and around the hut. The huts are monitored in turn, eight at a time.

If the operator suspects that unauthorized personnel are at any particular station, he can sound an audible alarm at that site and notify law enforcement officials.

THESE AND other features make LATRC one of the most advanced and sophisticated systems of its type in the

## ONE TIME ONLY

### Civic Symphony Will Perform 'Aida' Sunday

Verdi's colorful opera "Aida" will be performed at the Mira Costa High School auditorium Sunday afternoon by the 70-member South Bay telephone industry, but the system has not yet stopped growing.

As new, more advanced equipment becomes available, it is added to the LATRC complex.

Torrance Civic Symphony and a celebrated cast under the direction of Miss Elyse Vehle.

Soprano Elyse Wald, who has starred in six major operas during the past year, will sing the demanding role of Aida.

Rhadames, the Egyptian hero, will be portrayed by tenor Frederic Gates, who just recently completed a tour of the United States with one of the best known national opera companies.

In the role of Amneris, Queen of Egypt, will be mezzo-soprano Wanda Karos, another nationally known artist. Enrico Porta, a baritone, will sing the role of Amonasro, King of Ethiopia. Alessandro Sperdi will make his second local appearance as the King of Egypt.

Bob Foulk, a television and radio personality, will be narrator.

Jan Darian, president of the symphony board and of the Los Angeles County Symphony League, will speak during the intermission.

The single performance will begin at 7:30 o'clock. All seats are free and there is a reserved section for members.

Information about the performance may be secured by calling FR 5-2744.

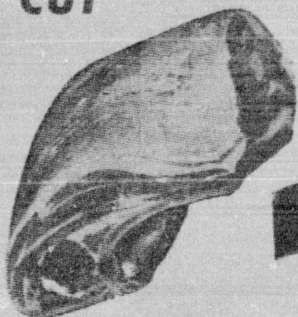


**RIB ROAST**  
USDA CHOICE  
PRIME RIB

**65¢** LB.

THE KING OF ROASTS AT A PRICE ANYONE CAN AFFORD

SAVE 33¢ A POUND



**LAMB ROAST**  
FRESH FROZEN

**29¢** LB.

SAVE 20¢ A POUND



**7 SALE DAYS**

THURSDAY thru WEDNESDAY  
MARCH 25-31, 1965

**GORDO'S**  
Frozen Mexican Foods  
DINNERS ENTRIES  
EA. 39¢ 3 FOR \$1

**WAXTEX**  
WAX PAPER  
100-FT. ROLL 23¢

USDA CHOICE  
**RIB STEAKS** ..... LB. 79¢  
USDA CHOICE  
**CLUB STEAKS** ... LB. 98¢  
USDA CHOICE  
**CHUCK STEAKS**.. LB. 39¢

SHOULDER CUT  
**LAMB CHOPS**.... LB. 49¢  
**FARMER JOHN BACON** LB. PKG. 55¢

**BROS. FREE \$1.79**  
LESS THAN 60¢ A POUND

**SPRINGFIELD HONEY**  
100% PURE  
SAVE 50¢  
589¢ LB. CAN

**MARKETS BEST GRAPE JELLY**  
SAVE 20¢  
229¢ LB. JAR

**SPAGHETTI**  
FRANCO AMERICAN 7 19-1/2 OZ. CANS \$1  
**V-8 JUICE VEGETABLE COCKTAIL**  
JUMBO 45-OZ. CAN 39¢  
**SALTINE CRACKERS**..... 1-LB. PKG. 29¢  
**FRUIT BARS**..... 3 BOXES OF 6 \$1  
**MANNING'S COFFEE**..... 1-LB. CAN 83¢

**SPRINGFIELD PURE BLACK PEPPER** 29¢  
SAVE 10¢ 4-OZ. CAN  
**CAMPANIA TOMATO PASTE** 10¢  
6-OZ. CAN  
**NESTLES MORSELS** 5 1/2 \$1  
SAVE 23¢ CHOCOLATE 6-OZ. PKGS.  
10¢ OFF LABEL/SAVE 26¢  
**NESTLES QUIK** 2 59¢  
-LB. CAN

**COMPARE ANYWHERE**  
"MARIBO" PATTERN • QUALITY  
**HEAVYWEIGHT LUXURY STAINLESS STEEL TABLEWARE** 99¢  
WITH COUPON  
NO PURCHASE NECESSARY  
4 PIECE PLACE SETTING OR 2 SERVING SPOONS WITH COUPONS AT RIGHT

**BONNIE MAE/REG. OR BUTTERMILK BISCUITS** 429¢  
TUBES OF 10  
**OSCAR MAYER ALL MEAT SLICED BOLOGNA**..... 10-OZ. PKG. 59¢  
**BORDEN'S PROCESSES SLICED AMERICAN CHEESE**.. 49¢

**GINO'S PIZZA**  
**CHEESE PEPPERONI**  
SAVE 10¢ 16-OZ. PKG. 49¢ SAVE 10¢ 19-OZ. PKG. 69¢



- 4-oz. Tin.....29¢
- POTATOES, 12-oz. 2/43¢
- ER, 15-oz. Can.....33¢
- 1-lb.....39¢
- Chunk, 1/2 Cans.....3/\$1
- SWEETHEART SOAP 1c SALE, Reg. Pak.....4/35¢
- STAR-KIST TUNA PIES, Frozen.....2/49¢
- SCOTKINS DINNER NAPKINS, 50 Ct. Pkgs.....2/49¢
- V-B APPLE SAUCE, No. 303 Cans.....2/37¢
- WHITE KING DETERGENT, Giant.....79¢
- WATER SOFTENER, White King, Giant.....61¢
- WOODBURY SOAP 1c SALE, Reg. Pak.....6/39¢
- WYLER'S SOUP MIX, Chicken—2 Pak.....10¢
- DUTCH ONIONS, York County, 8-oz. Can.....21¢
- ZEE TOILET PAPER, 4 Pak.....39¢
- ZEE LUNCH BAGS, 20 Count.....2 pkgs. 29¢
- ZEE PAPER TOWELS, 120 Count Rolls.....5/\$1
- SMOKIE JOE FROZEN SANDWICHES.....2 for 59¢
- STEERO BOUILLION CUBES, 12-oz. Pkg.....21¢
- WRISLEY SOAP, Reg. Bars, 6 Pak.....39¢

**CONVENIENCE**  
4466 TWEEDY BOULEVARD OPEN DAILY 9 A.M. to 10 P.M.  
Carson-Torrance 223rd ST. & AVALON OPEN DAILY 9 A.M. to 10 P.M.  
Los Angeles 5. WESTERN at SLAUSON OPEN 9 A.M. to MIDNIGHT SUNDAY: 9 A.M. to 9 P.M.  
Torrance 5305 TORRANCE BLVD. OPEN DAILY 9 A.M. to MIDNIGHT  
Hollywood 4317 BEVERLY BLVD OPEN DAILY 9 A.M. to 2 A.M.

### Wood to Succeed Salsbury

County Supervisors have appointed Walter J. Wood, 61, to succeed retiring County Flood Control District chief engineer M. E. Salsbury on April 1. Supervisor Kenneth Hahn has announced.

Wood, chief deputy to Salsbury since July, 1963, placed first in a recent civil service examination held to fill the top post.

Hahn said Wood is a veteran District employe who has been on the agency's engineering staff since 1928.

The new flood control chief, a native of Whittier, holds a civil engineering degree from Stanford University and is a member of Alpha Tau Omega fraternity.

### Toastmasters Will Install New Officers

Members of the Torrance-Lomita Realtors Toastmasters Club 646-51, a chapter of the Toastmasters International World Organization, will officially announce the election of Robert E. Westerfield as their new president at a noon luncheon Thursday at the Jump 'n' Jack restaurant.

Other newly elected officers are: educational vice president, Don Taylor; administrative vice president, Stan Hamblin; secretary-treasurer, Stephen Kerner; sergeant-at-arms, Jack Burns.

The new president Westerfield is 27 years old and a native of California. He has been a resident of the Southwest for seven years and at present resides in Redondo Beach with his wife and two sons. He attended Harbor College, L. A. City College and UCLA.

Westerfield is a loan officer, associated with the Torrance branch of Glendale Federal Savings and Loan Assn.

### Salesmen Win Membership In Ford Club

Eleven Torrance Ford salesmen have been honored for outstanding sales performances during 1964 at a banquet in the Hollywood Palladium.

The men were among a select number of dealership salesmen who were presented 360-500 club membership awards for "excellent retail performance."

Salesmen honored were Herman Drier, J. Kelly, Wynn Pope, C. Kelly, Ted Newman, Harry S. Knutzen, B. Ferdinand, J. Colby, Jack Radistic, B. Krajewski, Calvin R. Clark. All are associated with Vela Ford Sales Co.