

**New Carson Area Tract Approved**

Plans for a 11-home subdivision at the southeast corner of Sepulveda Boulevard and Normandie in the Carson area have been approved by the Regional Planning Commission. R. A. Watt, Inc., will subdivide the one-acre parcel.

FOR BEST CLASSIFIED ADVERTISING RESULTS — CALL DA 5-6060

**Crash Vaccination Program**

**Public Relations Firm Gets County Contract**

County Supervisors have awarded a \$48,500 contract to publicize a crash vaccination program to a public relations firm. Supervisor Kenneth Hahn, who branded the expenditure a "waste of public funds," cast the only negative vote.

Gumpertz, Bentley, and Dolan of Los Angeles received the contract.

Hahn said leading representatives of newspapers, radio, and television have pledged to support and publicize the campaign, which is designed to immunize all children under 5 in Los Angeles County against polio, diphtheria, tetanus, and whooping cough.

Voting to award the contract to the public relations firm were Supervisors Warren Dorn, Frank Bonelli, Ernest Debs, and board chairman Burton W. Chace.

Hahn also was sharply critical of the County Health Department for "dragging its feet" and not implementing the vaccination program last June when it received a \$870,000 grant from the federal government. He stressed that if implemented immediately, County Health Department personnel could have handled the campaign and there would have been no need to go into a "crash, panic-button" program set for completion by July 1, 1965.

He added that even though the funds for the publicity program come from the Federal Government, "it's still the taxpayers' money and should not be thrown around."

**Peninsula Homes Are Luxurious**

A luxurious five-bedroom home in a truly prestige location overlooking Catalina Island can be purchased for as little as 10 per cent down in exclusive Mesa Palos Verdes, sales director Phil Allways pointed out today.

"At Mesa Palos Verdes spacious homes may be bought by rising young executives and professional men because of the low down payment and long-term loan policies," Allways said.

Mesa Palos Verdes is builder Ray Watt's new \$30,000,000 prestige community high atop the smog-free Palos Verdes Peninsula overlooking the Santa Monica, Los Angeles and Hollywood skylines, the Pacific Ocean and Catalina Island.

**Moderator Named for Forum**

Charles Sohner will moderate a Redondo Beach Candidates' Forum sponsored by the South Bay Democratic Club, according to Eugene Lee Dickason, president of the club.

Sohner is a political science instructor at El Camino College and at Pepperdine College. He was the Democratic candidate for the 46th Assembly District in 1960.

The Candidates' Forum, to be held March 31 at the American Savings and Loan Building, 205 S. Pacific Ave., Redondo Beach, will give Redondo Beach voters an opportunity to hear and question all candidates in that city's municipal election.

All candidates for mayor, city attorney, treasurer, and the three council seats have been invited to participate. The meeting will begin at 8 p.m.

"WITH AS little as \$4,475 down a popularly-styled tri-level home in Mesa Palos Verdes can be delivered for immediate occupancy. Three, four and five-bedroom model homes, all with three baths, are available in a wide variety of exterior stylings, giving Mesa Palos Verdes a custom community appearance," Allways said.

All these award-winning Watt plans feature separate family-dining rooms and large rumpus rooms with mirrored wet bars and wall-to-wall carpeting. Balanced power kitchens feature deluxe gas range and oven, dishwasher and food waste disposer.

Beautifully furnished Mesa Palos Verdes homes are open from 10 a.m. until dark daily at the corner of Crenshaw Boulevard and Crest Road on the Peninsula. Telephone is \$77-6575.

Beautifully furnished Mesa Palos Verdes homes are open from 10 a.m. until dark daily at the corner of Crenshaw Boulevard and Crest Road on the Peninsula. Telephone is \$77-6575.

**SELF-MADE DANGER**  
Do-it-yourself electrical repair equipment sometimes includes liquid soldering compounds. Some are very corrosive if spilled on the skin or swallowed. The Food and Drug Administration recommends that all such dangerous products be kept in their original containers—and out of the reach of children.

**SEARS**

Truly a Small Hearing Aid Fits entirely in your ear!

All styles at Sears—Power Body Eye Glass styles—at Sears low prices. Sears confidential and air. from \$44.95

Try Before You Buy **\$2.99**

NO MINKY DOWN on Sears Easy Payment Plan

Not at Sears Santa Monica or Sears Santa Ana

For a Home Demonstration and Hearing Free Test! Write to: R. C. Dennis—Dept. 8508-5 Sears Roebuck and Co. 2650 E. Olympic Los Angeles, Calif.

NAME \_\_\_\_\_ ADDRESS \_\_\_\_\_ PHONE \_\_\_\_\_

**LET'S GET GROWING!**

NOW IS THE TIME TO FEED YOUR DICHONDRA LAWN

HEADQUARTERS FOR DICHONDRA WEED CONTROL WITH FAMOUS BRAND NAMES SUCH AS

- BANDINI
- SCOTTS
- VIGORO
- PAX
- RED STAR
- GERMAINS

**BLOOMING AZALEAS and CAMELLIAS** 1.19 and up Large Selection

**TROPICAL BOWL NURSERY** WE GIVE BLUE CHIP STAMPS

OPEN EVERY DAY  
2457 W. LOMITA BLVD.  
LOMITA — DA 6-7130

**BLUE CHIP**

**Something to Crow About... SAVE ON MILK**

**21 1/2c Quart**

EVERY-DAY LOW PRICES ON MILK... YOUR CHOICE OF GLASS OR PLASTIC

**43c Half Gal. | 22c Qt.**

Best buy in Cottage Cheese

**25c PINT** 49c QUART WITH CHIVES or PINEAPPLE 27c Pint

LANGENDORF COOKIES 4 pkgs. \$1

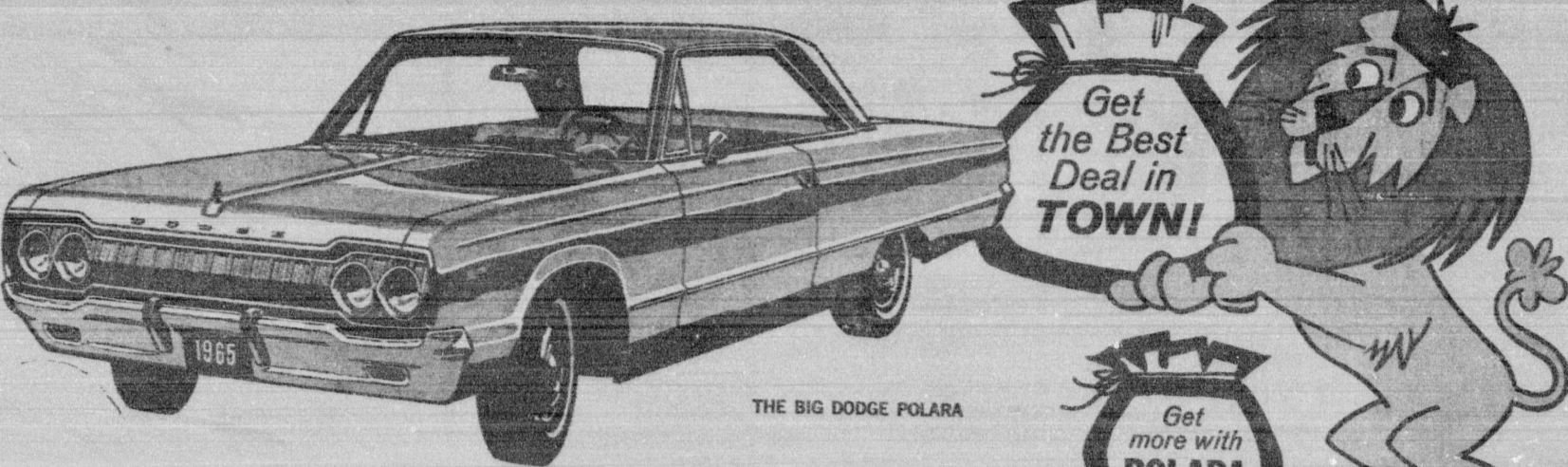
JARMAN'S FROZEN BREAD 3 Loaves 50c 6 Loaves 99c

REAL ORANGE JUICE 69c 1/2 Gal. 37c Quart

**ROSEBUD DAIRY**

182nd & CRENSHAW — TORRANCE  
"Freshness is not our attitude — It's our business"

**GET THE LION'S SHARE—GET A DODGE!**



**\$6381/MO.** for the Polara 4-door sedan after normal down on a 36 month contract based on Manufacturer's suggested retail price, exclusive of destination charges, state and local taxes, if any, and optional equipment.

The Big Dodge Polara, gives you More Dramatic Beauty—inside and out. More Road-Commanding Performance—383 cu. in. engine standard, with optional 426 cu. in. 2-bbl. and 4-bbl. engines, with a full choice of automatic and manual transmissions. More Handling Features—sports car cornering, ease of parking—features that make driving a Polara More Fun! Whether you want a hardtop, wagon, sedan or convertible, you'll find Polara gives you More Car for the Money! Find out for yourself how little you need. Dodge Dealers are giving big trades and easy terms, and with Polara's low sticker price you'll be pleasantly surprised how easily you can own a '65 Polara today. Get your share—The Lion's Share—a Dodge Polara.

**PUT A DODGE IN YOUR GARAGE!**

- Check These Standard Features:
- TORSION BAR SUSPENSION
  - UNITIZED SAFETY BODY
  - SAFETY RIM WHEELS
  - BATTERY SAVING ALTERNATOR
  - 5-YEAR/50,000-MILE WARRANTY\*