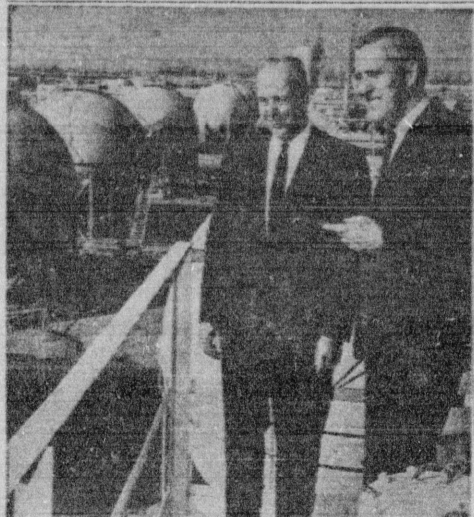


Williamson Heads New Chemical Firms Group



COUNCIL OFFICERS . . . G. Stanley Williamson (right), chairman of the newly organized Chemical Industry Council of Southern California, discusses the council program with Forrest E. Branch, vice chairman. The new council will represent chemical firms from the Kern County line to the border. Headquarters are in Los Angeles.

Organization of the Chemical Industry Council of Southern California representing chemical firms from the Kern County line south to the border has been announced by G. Stanley Williamson, council chairman.

Williamson, manager of the Shell Chemical Company's Torrance synthetic rubber plant, said that the council has been organized to provide "a central clearing house of information on the importance of the chemical industry to Southern California and to the state as a whole."

Noting that Department of Commerce figures list California as the eighth ranking state in the production of chemicals and allied products, Williamson stated that the Council will work closely with schools and colleges in educational projects and "is ready and anxious to cooperate in undertakings beneficial to the economic growth and progress of the Southland area, as well as to the chemical industry and allied products."

Serving with him as Council officers are: Forrest E. Branch, vice chairman, director of employee relations for American Potash and Chem-

ical Corp.; E. E. Chipman, secretary-treasurer, vice president and general manager of Productol Chemical Co.; They will act as an executive committee along with Floyd J. Gunn, general sales manager of Dow Chemical Co.; John Morrisroe, president of Pilot Chemical Co.; C. N. Rucker, plant manager of Union Carbide Corp. Chemical Division in Torrance, and R. L. Skov, district manager for Polymers Department, Coatings Division, Hercules Powder Co.

Central offices of the council have been established at 2975 Wilshire Blvd., Los Angeles, phone: Area Code 213, 381-1515.

In announcing the formation of the council, Williamson called attention to the fact that the last available figures from the Department of Commerce showed that upwards of 20,000 workers were engaged in the production of chemicals and allied products in the Los Angeles and Long Beach areas alone with an annual payroll of \$133,422,000.

"In the area we propose to serve ranging from Kern County in the north to San Diego County in the south,

'Antigone' Set At Joslyn Hall

The Federal Hazardous Substances Labeling Act is designed to protect the consumer from accidental poisoning in the use of hazardous household substances. It is enforced by the Food and Drug Administration, U.S. Department of Health, Education, and Welfare.

There are hundreds of companies," Williamson said. "We plan to make available to anyone having an interest in our industry up-to-the-minute information on activities and progress in the chemical field."

The council is already in the process of organizing speaker and educational bureaus.

"Antigone," the classical Greek tragedy by Sophocles, will be presented at the Joslyn Recreation Center, 3335 Torrance Blvd. Friday at 7:30 p.m. Co-sponsors are the Torrance Recreation Department and the Los Angeles County Museum.

The Greek dialogue film, with English subtitles, will run approximately one and a half hours. The public is invited without admission charge.

FOR CLASSIFIED CALL DA 5-6060

Stiff Odds Face Any New Product

Do you have a new idea or invention that can be turned into a profitable business venture?

If so, the odds are heavily weighted against your succeeding, but the odds can be reduced by following the steps outlined in the latest Small Business Reporter.

Copies of the Bank of America periodicals are available through the Torrance

Branch, according to Bruce Jones, vice president and manager of the branch.

Nearly one-third of the products submitted to the U. S. Patent Office are conjured by the "backyard scientist," but at least 90 per cent of all new products fail, usually within four years of their introduction. Small Business Reporter points out.

MANY OF these failures could have been avoided if the inventor realized the value of preliminary product and market testing—first, to determine if the product is good, and second, to determine if a market exists for it.

This generally involves determining the nature and extent of the market, and reviewing existing channels of distribution of comparable products.

What creates a successful product? "The charm of making the right decision at the right time," according to the periodical, which cites "wearing the infant idea too soon" as the biggest mistake made by inventors.

the product and its market with the help of outside assistance makes the chances of success more probable," the report concludes.

"Only in this way can the ideas of fantasy be separated from those that will change destiny or provide a better life."

Calvary to Show New Moody Film

"Windows of the Soul," the latest film released by Moody Institute of Science, will be presented at Calvary Baptist Church, 2818 Manhattan Beach Blvd., tonight at 8:30.

In the film Dr. Irwin A. Moon will demonstrate life deprived of the five senses and distortions of perception. He will dramatize a technique perfected at Moody Institute of Science which makes odors visible and participants can "see" the smell of a rose.

The wearing of inverting spectacles for several weeks and the resulting image received by the brain is another subject of the film.

Ultrasonics, the science of silent sound, will emphasize the limitations of the human senses showing the energy of silent sound raising material objects into mid-air and causing an ordinary cork screw to drill a spiral hole through a block of solid glass.

Two Banks Make Plans For Merger

City National Bank of Beverly Hills has merged with Guaranty Bank of Torrance, according to a report just released by Alfred Hart, president of City National Bank.

Stockholders of City National approved the merger last Monday. Guaranty Bank stockholders had previously voted for the plan.

Guaranty Bank listed assets of more than \$5 million at the end of 1963. City National Bank, with 13 branches in Southern California, lists assets of \$268 million.

Breakfast Scheduled By DeMolay

Members of the Lomita Chapter of the Order of DeMolay will hold a fund-raising breakfast today from 8 a.m. until noon. The breakfast is planned for the Lomita Masonic Temple, 25725 Bland Place.

Proceeds from the breakfast will be used to finance summer projects of the chapter.

David Grove, master councilor elect, said delicious food, courteous service, and good fellowship will be the order of the day.

Information is available by telephoning 376-8674.

ENROLLMENT DROP
Of California's 58 counties, only Plumas, San Francisco and Tehama reported fewer students in 1965 than 1964.

Spring Household Cleaning Aids

Sav-on

WE GIVE BLUE CHIP PRIZES

Bavarian TYPE BEER

Made by Grace Bros. in U.S.A.

12 oz. Cans **8:1.00**
24 for **2.89**

AUTOMATIC TOOTH BRUSH

G.E. — Safe, cordless battery operated handle. Recharging stand and 4 snap-in brushes included.

14.88

KODAK Instamatic 100 OUTFIT

Camera loads instantly... no threading, no tumbling — built-in flash. All needed items for wonderful snap shots.

12.28

LADIES' Hair Brush

EMPIRE — Choice of half-round or 3 row professional styles. Transparent and pearl colors with white nylon bristles. **7.00 Value**

49c

EMPIRE Bath Brush

Pretty pink and luscious blue lusterite handles with matching "Hi-lite" bristles.

1.00 Value **59c**

JOHNSON & JOHNSON Baby Oil

Cleans, soothes and protects baby's tender skin. Enriched with soothing lanolin.

50c Size **53c**

HOUSEHOLD Cleaning Aids

LIQUID TREND Clear or Pink
Large 22 oz. Size **3:1.00**

Sponge Mop
Cellulose sponge picks up more water. Heavy necked chrome finish squeezer. Ass't color sponges with white handle.

1.98

Dust Mop
EMPIRE — Nylon mitt-type mop, head picks up more dust. Swivel connectors for hard to reach areas.

3.98 Value **1.98**

Masking Tape
Brown tape with many uses. 1" x 75 ft.

69c

Vacuum Cleaner BAGS — A size to fit most major upright and canister models. Ass't number of bags per pak.

2 Paks 89c

COMET CLEANSER
Bleaches out stains

14 oz. **2:29c**

"Split-Tip" BROOM
EMPIRE — Tips are split to pick up fine dust and dirt the eye can't see. Outlasts 5 ordinary brooms.

1.79

Bowl Brush
EMPIRE — Long handle, quality bristles. Colors.

23c

Dish & Sink BRUSH
EMPIRE — Plastic handle in ass't colors — nylon bristles... will not scratch.

39c

Pot & Pan BRUSH
EMPIRE — Plastic handle with crimped brass wire bristles that will not rust. Keeps bright surfaces like new. **39c Value**

39c

Household Gloves
"Start-Tex" by FAULTLESS — Household glove with germ-fighting bacteriophage. Ass't colors. S-M-L.

59c

"Rot-R" Brush Cleaner
Cleans and restores paint brushes or rollers. Bristle preservative added. Reg. 1.25 Qt.

98c

K2s Spot Remover
Lifts the spot clear out of the cloth... and never leaves a ring.

1.48 1 qt. Tube with Brush
50c Size **55c** 88c

"Strip-it" PAINT & VARNISH REMOVER
Removes other types of coating also. Will not harm basic material.

Qt. Case **1.69**

EPOXEE Glue
Strongest adhesive — non-toxic... transparent, waterproof. One drop holds tons. 1/2 oz. Tube 1.00 Size

69c

LIQUID Metallic Solder
Can be applied cold... no heat needed. Waterproofs and weathersproofs.

1 1/2 oz. 49c Size **39c**

Gasket Cement
Quick sealing... leakproofs all joints — for all gaskets.

1 1/2 oz. 50c Size **44c**

Windshield Sealer
Makes a tight permanent seal. Withstands Heat, Cold & Moisture.

1 1/2 oz. 75c Size **59c**

Tuh 'n Tile Sealer
White waterproof adhesive... flexible, never becomes brittle.

5 oz. 1.00 Size **69c**

Fielder's Glove

Professional model with fiber braced thumb, stitch locked pocket and "Big H Trap"

6.79

Baseball Mitt
Pro model of selected steerhide. Deep well pocket, full lacing.

6.79

Fielder's Glove
Prime leather gloves with "sure hold" pocket. Rowhide laced, nylon stitched.

4.98

"Little League" Baseball
by SPALDING... Cushioned cork center, horsehide cover.

1.59

Baseball Bat
Autographed "Louisville Slugger"... Seasoned ash in 29" to 32" lengths.

2.49

Easter PLUSH

2.00 Foam Filled
Choice of 14" Cuddly Bunny, 13" Begging Bunny, 10" Swift Bunny, 10" Dory Bunny or 12" Dory Roundell. Ass't colors.

1.79 ea.

3.00 Tweak 'n Squeak Bunnies
4 assorted bunnies to choose from. Each has a voice maker in tummy. All semi-foam filled. Pastel colors.

2.69

4.00 Assortment
Choice of 21" Bunny, 15" Sitting Bunny, 13" Frisky Bunny (all with Tweak 'n Squeak voice) or 14" Comical Duck in colorful brown, gold color.

3.69 ea.

VIM Heavy Duty Detergent TABLETS

Giant 40 Tab Size

2:1.00

GLADE MIST Air Freshener

7 oz. Cans

2:1.00

Prune Juice SUNSWEET Unsweetened

Qt. **39c**

REYNOLDS Broiling Foil

Pure Aluminum GIANT 700 Ft. Roll REG. 1.99

1.39

PEPSODENT Tooth Brushes

69' Adults

3:1.00

KAL KAN Dog Food

M.P.S. Chunk Style

14 oz. Cans **6:1.00**

VITAMINS

Multi-Vitamins
A dietary supplement of 30 vitamins and minerals combined in one capsule. 100's

2.75

Therapeutic FORMULA
with B-12... High concentration of all vitamins... aids in vitamin deficiencies. 100's

2.69

TAMPAX
in Discreet Pak Choice of Regular or Super Box of 40

1.19

SCORE Spray
Deodorant for Men

1.00 4 oz. 1.49 7 oz. **89c 1.29**

PEPTO-BISMOL
for relief of UPSET Stomach, indigestion and nausea. 98c 5 oz. Size

79c

LAVORIS Mouthwash & Gargle
Pleasant tasting... keeps breath fresh. 98c 15 1/2 oz. Size

79c

AD PRICES PREVAIL March 21st to March 24th Sunday through Wednesday

Sav-on

SELF-SERVICE DRUG STORES

Open 9 A.M. to 10 P.M. — 7 Days A Week

Bring Your Next Prescription in to Sav-on Drugs

PEPSODENT TOOTH PASTE

2:1.00 89c Family Size

Head & Shoulders SHAMPOO

for DAVIDOFF 2.4 oz. Control 89c Size

69c

BONUS OFFER

on Black & White Film

FREE Extra Set of Prints

A Free Set of Jumbo Prints Returned with Every Roll of Black & White Film Left for Developing & Printing.

2 Jumbo Prints for the Price of 1

Regardless of Your Size of Film

Lund ED AGENTS

Dear Customer:

As you know, we have been associated with the Gilbert C. Van Camp Insurance Agency, Inc., one of the largest and oldest insurance organizations.

Land Co. will continue to provide local and independent service to you aided by the resources of Van Camp Insurance.

22330 HAWTHORNE BLVD., Suite 201
TORRANCE • Phone 378-9266

Bring Your Next Prescription in to Sav-on Drugs