

Gemini Project Gets Boost From Local Man

Capt. Willard H. Colley of Torrance, is helping to provide the "boost" that will hurl the Gemini, first U.S. two-man spacecraft into orbit.

Capt. Colley attended the University of Virginia. He received his B.S. degree in mechanical engineering from Oklahoma State University, and was commissioned through the aviation cadet program in 1952.

Capt. Colley, who resides at 440 Calle Mayor, is a member of the Air Force Systems Command (AFSC) team responsible for "tailoring" a Titan II intercontinental ballistic missile to carry the nation's manned capsule into space.



CAPT. WILLARD H. COLLEY
Gemini Project

He is a procedures engineer at the AFSC Space Systems Division at Los Angeles. His division is a major component of AFSC which researches, develops and tests Air Force planes and missile systems.

Other modifications by the captain and his associates to the launch vehicle include structural changes to save weight and back-up equipment to take over should the primary equipment fail.

Other modifications by the captain's team include a malfunction detection system to warn the astronauts of failure in any part of the rocket booster or spacecraft. It is designed to give them maximum time to correct the failure or end the mission if necessary.

THE GEMINI launch vehicle is 10 feet in diameter and stands 108 feet tall with the capsule on top. Weighing 150 tons with fuel, it is powered by three liquid propellant engines which give it thrust of 530,000 pounds.

CHAMBER SINGERS

John Lilley of 2520 W. Carson St. appeared with the USC Chamber Singers on television Monday. The program presented highlights of the Chamber Singers' recent Department of State Cultural Presentation Program tour through seven western European countries and the state of Israel.

Dominguez Area Bridge Contract Out

A \$261,813 contract for the construction of a bridge across the Dominguez Channel and auxiliary improvements in the Shoestring Strip area has been awarded by the Los Angeles Board of Public Works.

Project plans call for constructing a reinforced concrete box girder bridge on 190th Street across the Dominguez Channel, and the necessary approach roadways, which will provide one traffic lane in each direction.

Other items in the project provide for remodeling the on-and off-ramps to the Harbor Freeway, the installation of storm drain facilities, and the construction of a sewer siphon under the channel, according to John S. Gibson Jr., district councilman.

These improvements, he said, were necessitated by the improvements of Dominguez Channel by the Los Angeles County Flood Control District.

The work, assigned to Peter Kiewit Sons' Co., is expected to be completed in 210 days.

JAPAN CREDIT TOUR

A "Marymount College Summer in Japan," has been scheduled by Mrs. Mary Parent, head of the art department at Marymount College. Students will leave from San Francisco June 3 and return Aug. 23 via the President Cleveland liner. Six hours credit will be given for the tour.



Truly a Small Hearing Aid Fits entirely in your ear!

All styles at Sears—Power Body or Eye Glass styles—at Sears low prices. Bone conduction and air.

Try Before You Buy \$2.99

NO MONEY DOWN on Sears Easy Payment Plan

Net at Sears Santa Monica or Sears Santa Ana

For a Home Demonstration and Hearing Free Test Write to:

R. C. Dennis—

Dept. 8508-5

Sears Roebuck and Co.

2650 E. Olympic

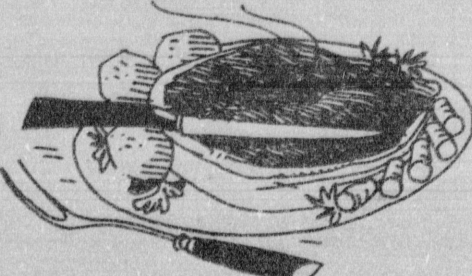
Los Angeles, Calif.

NAME _____

ADDRESS _____

PHONE _____

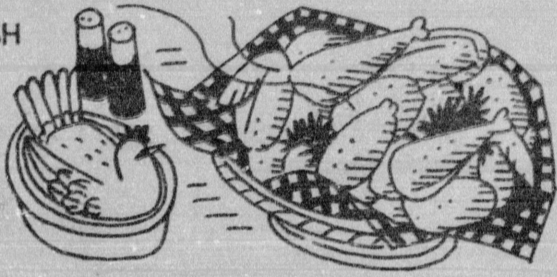
U.S.D.A. "CHOICE" BEEF
BONELESS SWISS STEAK
waste free **59¢**



U.S.D.A. Grade "A" Fresh! The most popular part... let everyone have a drumstick!
FRYER LEGS & THIGHS 59¢
Fresh Frozen. Try a real Southern breakfast... just coat with corn meal and fry! 1 pound bag
FRYING CHICKEN LIVERS 69¢
U.S.D.A. Grade "A" Fresh! Just the thing to have in the freezer for the unexpected guest!
HALF OR WHOLE FRYER BREASTS 69¢
Fresh Midwestern Grain-Fed Pork! Bake, serve with crab apples or apple sauce! Large loin
LOIN END PORK ROAST 49¢

U.S.D.A. GRADE "A" FRESH

FRESH FRYERS
whole body **29¢ lb.**



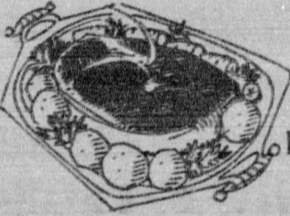
U.S.D.A. "Choice" Boneless Steaks

TOP ROUND
SIRLOIN TIP
CUBED BOTTOM ROUND

98¢ lb.

U.S.D.A. "CHOICE" BEEF

ROUND STEAK
full center cut—small round bone **69¢ lb.**



U.S.D.A. "CHOICE" BEEF

RUMP ROAST
bone in **69¢ lb.**

Fresh Gourmet Seafood	
FRESH FILLET OF SOLE	89¢
FRESH FILLET OF OCEAN PERCH	69¢
FRESH FILLET OF RED ROCK COD	69¢

MIDWEST GRAIN-FED

FRESH PORK ROAST
full 7-rib end **39¢ lb.**

U.S.D.A. "CHOICE" BRISKET

BONELESS CORNED BEEF
bottom round **69¢ lb.**
McCoy's or Patman's

SLICED BACON (Your Choice)
Farmer John, Wilson Corn King, Morrell Yorkshire, Dubuque Iowa Maid or Dubuque Royal Buffet
1-lb. pkg. **59¢**

Lancaster Farms, 1 day fresh! U.S.D.A. Grade "A"
Fresh Roasting Chickens **59¢**
Gorton's, frozen. So easy... so good! 7 oz. pkg. **29¢**
Tiny Fishcakes **29¢**
Gorton's frozen. Perfect for Lent! 8 oz. package **65¢**
Breaded Shrimp

U.S.D.A. "Choice" Beef
Boneless Oven Roasts
Sirloin Tip, Rump, Bottom Round **79¢ lb.**

Fresh, Lean
Boneless Stew Meat
79¢ lb.

FROZEN
HUNSTON PIES
45¢
apple, cherry, boysenberry, mince, peach, pineapple, pumpkin, strawberry-rhubarb

EVAPORATED
PET MILK
2 tall cans **25¢**
Save 6¢

4oz With rich, creamy cheese! 20 oz. pkg.
PIE & Cheese 39¢
Delicious salmon loaf dish! Save 8¢! No. 1 tall can
Salmon Pink Salmon 59¢
4oz or a cracker spread. Save 10¢! No. 1/2 can
Salmon 73¢
Favorite in a different style! No. 1 tall can
Salmon Tuna 37¢

NET PIES
17¢

ON STATE EXTRA FANCY
DELICIOUS APPLES
3 lbs. **\$1**

apple 9¢
nuts 29¢
Grapefruit 5¢

DEL AMO SHOPPING CENTER
CORNER OF HAWTHORNE & SEPULVEDA

MAGIC CHEF

SPECIAL VALUE!

Ancient Age

America's Largest Selling
6 Year Old Kentucky Bourbon

SAVE \$2.23 on Half-Gallons

Regularly \$13.18
Limited Time **\$10.95**
YOU SAVE \$ 2.23*

*Savings of an additional \$1.10 per bottle if purchased by the 6-bottle case.