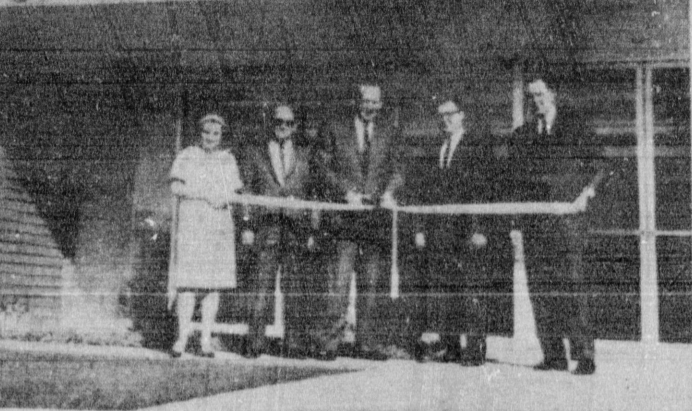


permaglass



OPENING PLANT ... civic and company officials joined ranks recently to mark the opening of the Torrance area's first tempered glass manufacturing plant, Permaglass, Inc., at 28008 S. Normandie Ave. From left are Pat Aggs of the firm; J. Walker Owen, Chamber of Commerce Manager; Arthur L. Reeves, Chamber president; Larry J. Detzel, and Frank A. Larimer, general manager of Permaglass, Inc.

Firm Producing Tempered Glass in Torrance Plant

The Torrance area's first tempered glass manufacturing plant, Permaglass, Inc., opened and went into full production recently at 28008 Normandie Ave. It was announced by Frank A. Larimer, general manager.

Representing an investment of 400,000, the new Permaglass plant contains one of the largest glass-tempering furnaces in the United States—and the largest of its kind in California. The firm will ultimately employ some 40 persons.

The newly-completed building has been designed for expansion and Permaglass already made plans for future growth.

TORRANCE civic leaders, including Mayor Albert Isen and President of the Torrance Chamber of Commerce, Arthur L. Reeves, recently toured the new facility and welcomed the new industry to the area.

Permaglass is one of the country's leading suppliers of tempered glass for automotive, commercial, industrial and residential use.

The firm is headed by Harold McMaster, president, and has its headquarters at Woodville, O. Plants are located at Genoa, Milbury and Payne, O., Fort Lauderdale, Fla., Torrance, and in Canada at Ajax, Ont.

Permaglass products include windshields, side and rear windows for automobiles, safety-glass fronts for television sets, porthole glass for ships, view windows for ranges, washers, dryers and rotisseries, fireplace screens, aircraft windows and many other glass items with special safety or high-strength requirements.

TEMPERED glass is produced by heating ordinary glass until it is red hot and then suddenly cooling the surfaces with controlled blasts of cold air.

This process permits the finished product to withstand six to eight times more impact than ordinary glass and it is almost impossible to break a full-length panel by running into it with the human body, tests have shown.

The plant has one furnace in operation which will temper a sheet of glass 8 to 10 feet in size. The Torrance furnace is new in design and is the result of studies made of the first furnace of its type which was installed two years ago in the Florida plant.

Permaglass has been approved this year by the City of Los Angeles for use in sliding glass and shower doors where safety glass is required by law.

New Members to Get Rose Bush

Gift of a rose bush to each new member of the South Bay Rose Society will highlight the meeting tomorrow at Ladera Park Club House, 6227 Ladera Park Ave., at 7:30 p.m.

Demonstrations of rose arrangements will be presented in operation which will temper a sheet of glass 8 to 10

CHECK OUR LOW, DISCOUNT PRICES!

Globe PLUMBING MART

24835 Western Ave. (Rear of Lucky's Store in Globe Shopping Center.)

- Bathroom and kitchen fixtures
- Vanities—18 models 64 colors to select from, marble tops
- Water heaters
- Wall heaters
- Lawn sprinkler supplies
- Pipe fittings, valves
- Tools
- All materials for any type plumbing and remodeling
- Custom artificial fireplaces and mantels
- The Do-It-Yourself H.O.

24" BATHROOM VANITY
Complete with marble top and back-splash, 18"x27" vitreous china, oval bowl, faucet with mechanical drain.

\$5950

FREE DELIVERY

Hours: 9 a.m. - 5:30 p.m.
Sundays 10 a.m. - 4 p.m.
Friday Till 8 p.m.

PHONE 325-7162

AMPLE PARKING

Candidates Forum for Redondo Set

A candidates forum for Redondo Beach voters will be held at the American Savings and Loan Association Building, 205 S. Pacific Ave., on Wednesday, March 27. The forum is being sponsored by the South Bay Democratic Club, according to Eugene Lee Dickason, president of the club. All 27 candidates for mayor, city attorney, city treasurer, and councilmen in District 1, 2, and 4 have been invited.

The Redondo Beach election is Tuesday, April 13. All voters have been urged to attend the 8 p.m. forum.

FOR CLASSIFIED CALL DA 5-6060

LEONARDS

Bell & Howell BUYS-OF-THE-YEAR

ENTIRE LINE OF BELL & HOWELL AT SPECIAL PRICES!
Prices were never lower of history. Only Leonards Bell & Howell camera equipment display in and see our complete display!

"COMBINATION BUY"
BELL & HOWELL AUTOMATIC "SLOW MOTION" 8mm MOVIE PROJECTOR
Features Bell & Howell 8mm projector that features Automatic Threading, forward, reverse, still picture control and the popular 400 foot capacity reel. Plus slow motion speed control.
Model 246 **119.88**

Bell & Howell MOVIE PROJECTOR AND YOUR CHOICE OF EITHER OF BELL & HOWELL MOVIE CAMERAS
SPECIAL BOTH 219⁷⁶
Camera & Projector

Bell & Howell Electric Eye Zoom 8mm MOVIE CAMERA
Precision built to give you continuous trouble-free performance. This camera features Electric Eye Zoom, zoom lens (18mm-25mm f/1.8) electric eye, single frame & continuous run, reflex viewing and die cast aluminum construction.
Model 45C **94.88**

Bell & Howell Electric Eye Zoom 8mm REFLEX MOVIE CAMERA
Fabulous "Through the Lens" viewing, electric eye camera with f/1.8 zoom lens. The perfect camera. Just slip in a pre-loaded cartridge and you'll never lose another important scene.
Model 315 **99.88**

"DIAL A PICTURE" Bell & Howell **DIAL 35** ELECTRIC EYE CAMERA
This camera features: Horizontal Format "Data Center" viewfinder, motorized film drive, "Data Center" electric eye, zoom f/1.8 zoom lens and zoom focusing 2 1/2" to infinity. Half-frame gives 40 exposures on 20 exposure roll.
INCLUDES QUINIX KIT
... And Case and Flash Gun!
BUY OF THE WEEK SPECIAL! **84⁸⁸**

BELL & HOWELL 8MM ANToload CARTRIDGE MOVIE CAMERA
Snap... out comes the exposed film! Snap... in goes the new! The fastest way you to load roll film!
• Electric Eye Exposure Control
• Reflex through-the-lens viewing
• One speed gear-up lever
• Automatic slow motion!
BUY OF THE WEEK! SPECIAL! **179⁸⁴**

BELL & HOWELL 1.9 "Data Center" 35MM ELECTRIC EYE "Data Center" CAMERA
INCLUDES FAMOUS QUINIX KIT, AUTOMATIC FLASH GUN AND LEATHER CASE!
• Automatic Exposure Control
• "Data Center" Viewfinder
• Bracket the lens shutter!
• 45mm f/1.9 lens—Built-in rangefinder!
BUY OF THE WEEK! SPECIAL! **104⁸⁸**

"COMPLETE" 7-PIECE BELL & HOWELL "ZOOM" MOVIE OUTFIT
BUY OF THE WEEK SPECIAL! **219⁹⁵**

Here's the combination to more exciting motion! With the Bell & Howell Cartridge Loading Zoom Camera you'll enjoy the advantages of a fast 1/1.8 Zoom Lens, Reflex "Through the Lens" Viewing and a convenient Pistol Grip. The Antoload Projector has a forward, reverse and still picture control, as well as 400 ft. Reel Capacity. All this, plus a complete list of accessories.

Includes: PROJECTOR, CAMERA, 35mm CARTRIDGE, CASE, BATTERY, BATTERY CHARGER, BATTERY GUIDE, BATTERY CARRYING CASE, BELL & HOWELL OPTI-REFLEX COMBID.

LEONARDS

EASY TERMS! Charge It!

TORRANCE 25405 CRENSHAW DA 5-1111 SP 5-3076	CURBAK 461 NO. VICTORY BLVD. 863-1411 848-1361	GARDEN GROVE 17891 HARBOR BLVD. JA 7-3900	EL SEGUNDO 400 MO. SEPULVEDA OB 8-7702 LA 3-2728
--	---	--	---

DON'T MISS THIS GREAT SALE

CARPET Sell Out!

WE ARE OVERSTOCKED AND MUST REDUCE OUR INVENTORY AT ONCE!
4 DAYS ONLY THURS., FRI., SAT., SUN.

<p>WOOL-NYLON CANDY STRIPE REG. \$2.95 SQ. YD. 188 SQ. YD.</p>	<p>100% Continuous Filament NYLON REG. \$5.95 SQ. YD. 288 SQ. YD.</p>	<p>DU PONT '501' NYLON REG. \$6.95 SQ. YD. 388 SQ. YD.</p>
<p>OPEN SUN. 10 A.M. - 5 P.M. DAILY 9 A.M. - 9 P.M.</p>		
<p>HEAVY CAPROLAN NYLON REG. \$6.95 SQ. YD. 488 SQ. YD.</p>	<p>9'x12'—OVAL BRAIDED RUGS REG. \$34.75 2988</p>	<p>DUPONT—COMMERCIAL '501' NYLON REG. \$8.75 588 SQ. YD.</p>

TOO BUSY TO SHOP? WE'LL SEND A REPRESENTATIVE TO YOUR HOME WITH ALL TYPES OF CARPET—NO OBLIGATION, OF COURSE! CALL FR 0-4371

NO MONEY DOWN • 3 YEARS TO PAY

Artistic Carpets SAVE UP TO 50% ON REMNANTS

20352 HAWTHORNE BLVD., TORRANCE