

Stable Government First Need in South Viet Nam

By ALPHONSO BELL, Congressman, 25th District
President Johnson's so-called tit-for-tat air reprisals against North Viet Nam really began with the Gulf of Tonkin last Aug. 5.

Retalizatory strikes directed at Dong Hoi on Feb. 7, as well as subsequent attacks above the seventeenth parallel in response to other military provocations against United States personnel in South Viet Nam, underscored the Presidential message: we are in South Viet Nam to stay.

With the first counter-attack this month our military situation in the area moved from Defense Condition 4 to DefCon 3. The Administration believes we will be better able to avert DefCon 1, which is Pentagonese for all-out war, if we demonstrate now our national strength and will to resist. I agree.

WELL ORGANIZED and predictable riots outside various American embassies should not deter us. Neither should criticism at home which seems to be coming largely from groups usually in accord with the President.

There is one point of agreement shared both by those who believe we must remain in South Viet Nam and those, here and elsewhere in the world, who argue for negotiated settlement.

This agreement is that negotiated peace is impossible until political stability is restored to Saigon. Seven different governments have held power in the last sixteen months.

BEFORE THE United States can properly defend the nation from the Communists, or even withdraw, a viable coalition leadership must be established.

In the meantime, while South Vietnamese fight among themselves, the war goes on. 23,500 American servicemen are stationed there. Military dependents have been evacuated. What some observers have called tit-for-tat strategy continues. Each air assault by the United States above the 17th parallel has had, up to now, specific justification in an act by the enemy.

Doubt persists that such strategy by our forces can

long continue. It is wrong, some say, because it deprives Washington and Saigon of the initiative.

President Johnson was quoted as saying when discussing the Pleiku reprisal: "I want it to be appropriate." Critics of the President who want something more than tit-for-tat combat in Viet Nam tend to misinterpret the word "appropriate." It does not necessarily mean "proportional."

OUR RESPONSE in the Gulf of Tonkin was not proportionate either to our risk or to the damage inflicted on United States vessels on Aug. 2 and 4, 1964.

Twelve hours after the Pleiku attack the United States dispatched 48 jet bombers to Dong Hoi. When the Viet Cong blasted a United States enlisted men's hotel at Quinhon, 100 Navy planes demolished the enemy's supply and staging base at Chanhhoa with every-

thing from fragmentation bombs to 750 pounders.

In the new lexicon of guerrilla war, especially when one side seems to enjoy a privileged sanctuary, the "appropriate" response should cause considerably more pain than the precipitating assault.

WHEN COMMUNISTS attack American installations, even when the attacks are insignificant, missions against the enemy which the pressures of national and international

politics ordinarily would not allow, suddenly become "justified" because "provocations" have occurred.

It is a strange war and a strange language. But we are in it. And regardless of what some people say we cannot afford to lose it or to retreat from it because the country

for which we fight lacks stable government. Our goal is to avoid a more dangerous battlefield, closer to home, where we might have to fight

at an even higher price with even more explosive weapons.

Seaman Ret. Terry A. Basch, son of Mrs. Shirley Basch, of 18305 Van Ness, completed basic training Jan. 29 at the Naval Training Center, San Diego.

The nine-week training included naval orientation, Naval history and organization, seamanship, ordnance and gunnery, military drill, first aid and survival.

Redondo's Voters Invited To 'Meet the Candidates'

"Meet the Candidates" is the topic of an open meeting co-sponsored by the Redondo Beach Chamber of Commerce and Redondo Beach Coordinating Council Thursday at 7 p.m., Redondo Beach Elks Lodge.

Candidates for the offices of mayor, city councilman, city attorney and city treasurer have been invited to speak for three minutes. The election will be held April 13.

Moderator will be Harold Wennstrom, dean of the Department of Fine Arts, El Ca-

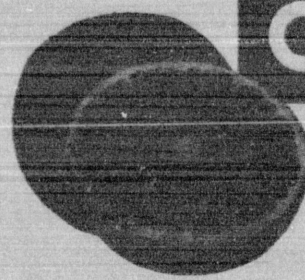
mino College. The sponsoring organizations extend an invitation to all area families, with a special note to include children and give them a chance to observe democracy in action.

Captain Clyde S. Bernhardt Jr., son of Mr. and Mrs. Clyde S. Bernhardt of 1914 W. 262nd St., Lomita, has completed the rigorous U.S. Air Force survival and special training course conducted by the Air Training Command at Stead AFB, Nev.

Safeway's (the) place to buy Meats, Produce!



U.S.D.A. Choice, Center Cut
Seven Bone Beef Roast
Tender, Flavorful Cut from shoulder of beef. Excellent to pot roast.
lb 39¢



Oranges

Large size, California Navels
Sweet, juicy. Peak of season flavor

10 lbs. 89¢

Fancy quality Central American Packed in tropics
2 lbs. 25¢

Fancy, green heads Locally grown Excellent for stew
lb. 7¢

Vine-ripened Firm slices In cello pack
13-oz. tube 29¢

Tender crisp large size stalks For relish or salad
each 19¢

Packaged from dairy
2 -lb. bag 25¢

Fresh, long green slices
3 for 39¢

For cooking
3 -lb. bag 25¢

Crisp, fresh-cut bunch lettuce
2 for 25¢

Town House Seedless
7 1/2-oz. pkgs. 25¢

Fancy Dried Fine Flavor
8-oz. pkg. 29¢

U.S.D.A. Choice Beef
Chuck Steaks
Cut from shoulder of beef.
lb. 39¢

Beef Pot Roast U.S.D.A. Choice **lb. 69¢**

U.S.D.A. Choice Beef Shoulder **lb. 49¢**

Beef even Roast U.S.D.A. Choice **lb. 89¢**

Boneless Top Sirloin
Fully aged Steaks U.S.D.A. Choice Beef **1.29**

New York Cut Steaks
Boneless, Fully aged "King of the Broilers" **1.89**

Choice Flank Steaks
U.S.D.A. Choice Beef Ideal for stuffing **98¢**

Ground Beef Freshly Made **39¢**

Ground Chuck Lean Beef **59¢**

Ground Round Extra Lean **69¢**

Stewing Beef Boneless Lean Cuts **79¢**

Sliced Picnics Smoked **35¢**

Cut-Up Fryers Henon House Dicklers **39¢**

Fresh Roasters Lancaster Farms **49¢**

Beef Shanks Mealy Center Cuts **39¢**

Breakfast Specials
Sliced Bacon Farmer John 1-lb. 59¢
Pork Patties James Dairy 8-oz. pkg. 49¢

Delicatessen Items
Sterling Franks 1-lb. pkg. 45¢
Thick Slice Bologna Safeway 12-oz. pkg. 49¢
Regular Bologna Safeway Sliced 1-lb. pkg. 59¢

Town House Extra Large Prunes 2-lb. bag **69¢**

Town House Breakfast Prunes 2-lb. bag **49¢**

NOW... Get More Bread For The Same Money!



Mrs. Wright's and Skylark Breads have been increased in weight but not in price!
Here Are the New Sizes:
Standard Loaf—1-Pound (16 ounces)
Large Loaf—1 1/2-Pounds (24 ounces)
Buy 3 Loaves and Save Even More!

Grade AA Fresh Large Eggs
Cream O' the Crop
1-doz. **35¢**
Extra Large Eggs 1-doz. 37¢

Skippy Peanut Butter
Choice of Chunk or Creamy
26-oz. Jar **89¢**

START YOUR 6-PIECE SET TODAY!

NEW HAWTHORNE **TEFAL** COOKWARE
THIS WEEK'S OFFER
On our Item-A-Week Plan:
8" BREAKFAST SKILLET
Heavy duty aluminum with Teflon coating each **\$2.19**

Safeway Dairy & Delicatessen Buys!

Cottage Cheese
Creamy, Large Curd (Qt. 49¢) Pint **25¢**

Shady Lane Butter
First quality 1-lb. ctn. **69¢**

Margarine Sunny-Bank 4 1-lb. ctn. **51¢**

Cheese Dutch Milk Blend Choice of Four 3 8-oz. **51¢**

Salad Dressing Lucerne Blue Cheese pint jar **59¢**

Listerine
Oral Antiseptic 7-oz. Sweetens Breath bottle **55¢**

Gold Medal Spaghetti
Rich in Food Value 1-lb. pkg. **19¢**

Town House Grapefruit Juice
Natural or sweetened 3 16-oz. cans **\$1**

Redeem Coupon Sent You for **FREE BLUE HEAVEN PATTERN SAUCER**
With Coupon 8A and purchase of \$5.00 or more at Safeway. Coupon 8B, 8C, 8D good for 50¢ off on specified dishware items.

Safeway Buys in Frozen Foods

Orange Juice Pet-oh Concentrated Just add water 5 4-oz. cans **\$1**

Bel-air Fruit Pies All varieties except blueberry 3 2-lb. pies **\$1**

Ice Cream Snow Star—Vanilla, Coffee Neapolitan or Chocolate half gallon cartons **49¢**

5 for \$1 Values
• Wax Beans, 9-oz. • Grape Juice, 6-oz.
• Lima Beans, 10-oz. • Cut Corn, 10-oz.
• Grapefruit Juice, 6-oz.
• Mixed Vegetables, 10-oz.

Your choice **5 for \$1**

Macaroni and Cheese Merlot's 25-oz. pkgs. **39¢**

Oh Boy Pizza with Cheese 12-oz. **39¢**

Bel-air Waffles Pop in Toaster 5-oz. pkg. **10¢**

Vegetables Birds Eye Mixed with Onion Sauce 3 9-oz. pkgs. **51¢**

Meat Pies Menor House Choice of 4 5 8-oz. pkgs. **51¢**

Sourdough Rolls Sheeps-headers bag of 12 **39¢**

Sea Foods for Lenten Menus

Cod Fillets Excellent for Lent 59¢

Perch Fillets A Lenten Pasture 59¢

Sole Fillets Excellent to pan fry 69¢

Halibut Steaks Center Cut lb. **69¢**

Swordfish Steaks Center Cut lb. **79¢**

Salmon Steaks Center Cut lb. **98¢**

Vets Office Opens Daily For Service

Long Beach area veterans and dependents needing assistance in filing claims for veterans' benefits were advised today that a branch of the County Service Office is open daily in Long Beach.

County Service Officer Arthur H. Tyrone notified vets that the Long Beach office is located at 415 W. Ocean Blvd., Room 301. Telephone number is HE 2-0411, Ext. 280.

Veterans' representatives in Long Beach are Paul Haverluc and Ivan F. McDaniel.

Tyrone stated that the Long Beach branch will assist in all phases of veterans' claims, including pensions for vets, their widows, dependent parents and minor children; compensation for service-connected disabilities, and G.I. loans and insurance.

there is **ONLY ONE**

Welcome to the **Wagon**

Call **DORIS STAMM**
DA 7-9193

TORRANCE: 4705 Torrance Blvd., also Western and Carson
REDONDO BEACH: 245 Palos Verdes at Catalina
LOMITA: Pacific Coast Hwy. at Narbonne

