



**REALTY TOUR . . .** Realtors from Lippard Realty are pictured boarding a chartered city bus for a tour of the Title Insurance and Trust Co. of Los Angeles. Getting on board are, from left, Don Ellis, Doris Lippard, Jim Clauson, Florence Allman, Art Mason, and Helen Vais. Salesmen and brokers from Pacific Plaza Realty, Ken Peters Real Estate, and Time Realtors also made the tour.

PRESS-HERALD—PRESS-JOURNAL & HARBOR MAIL

# REAL ESTATE

AND

## Home Improvement NEWS

### Torrance Firms Gain Contracts

Two Torrance firms were included in contracts valued at more than \$13 million, according to Alvin P. Meyers, regional director of the U. S. Small Business Administration for Southern California and Nevada. The contracts were awarded by various government purchasing agencies during the month of January.

Torrance firms are Tipco Painting Co., \$7,170 contract, and Warren Southwest, Inc., \$8,000 contract.

### My Neighbors



"Just how big is our bill here already?"



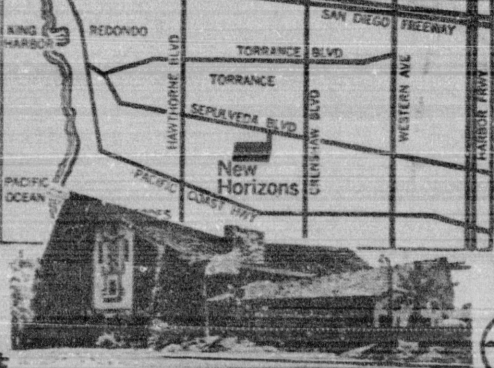
## PHYSICAL FITNESS

One of the 23 recreational facilities provided residents of New Horizons-South Bay is the popular physical fitness gymnasium. It is complete with the latest exercising and reducing machines, weight lifting and gym equipment, and sauna baths with sub-down and shower facilities for both men and women. Wayne "Doc" Anderson, famed trainer of the Los Angeles Dodgers, is on duty daily as physical fitness director. All these recreational facilities are yours to enjoy when you live in New Horizons-South Bay.

## NEW HORIZONS SOUTH BAY

New Horizons-South Bay is a complete adult recreation and garden home community. To maintain its adult atmosphere, one spouse or single persons must be at least 35, and no children under 18 may become permanent residents.

Garden Homes **\$19,995** from a RAY WATT Development



**Hotpoint**  
DRIVING INSTRUCTIONS: The Complete Adult Recreation and Garden Home community is located on Sepulveda Boulevard between Crenshaw and Hawthorne in Torrance. Phone 325 6161.

## Many Facilities Offered For Those Leisure Hours

"With the children grown and after off to college or married, residents of New Horizons-South Bay in Torrance head many ways in pursuits of leisure time activities," says Lee Schiefelbein, sales director of the 600-garden home complete adult recreation community.

The male member of the family may head out for nine holes of golf on his own course, then a workout in the Recreation Center under the supervision of Wayne "Doc" Anderson, famed trainer of the L. A. Dodgers who is on hand daily as physical fitness

## California Has Most Beekeepers

Californians are the nation's top beekeepers, according to a report compiled by the Economic Research department of the Bank of America.

Consumer demand plus superior management, climate, and financing facilities, will all contribute to the continued success of the state's cattle feeding industry, now the third largest in the nation, the study concluded.

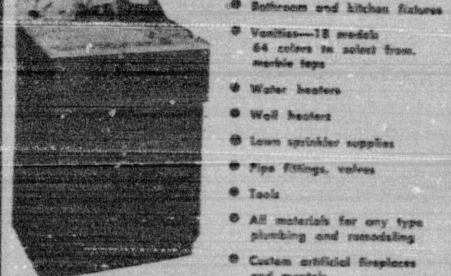
The report, written by Dr. John A. Hopkin, vice president, Agribusiness and Dr. Robert C. Kramer, director of the Agricultural Marketing and Utilization Center, Michigan State University, predicted that by 1975 California per capita consumption of beef will reach about 137 pounds, as compared to 126 pounds per person in 1963.

This will mean that 5 1/2 million head of cattle must be slaughtered annually to supply 48 per cent of this number, or 2.64 million head, an increase of 39 per cent over 1963. Only 59 per cent of October 1964 feed lot capacity would have to be used to supply this number, based on a feeding period of 140 days.

California cattle feeders, the report indicates, are increasingly depending on sources outside the state for their growing needs for feeder cattle despite the growing number of beef calves being raised in California.

## NOW! IN LOMITA GLOBE PLUMBING MART

24935 Western Ave. (Rear of Lucky's Store in Globe Shopping Center.)



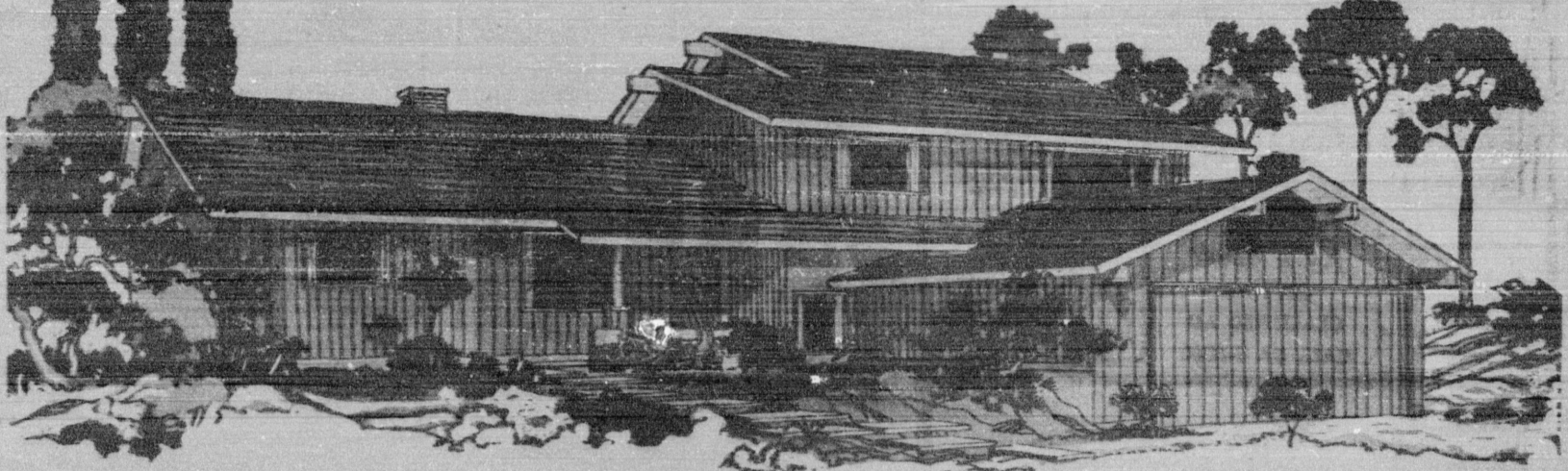
- Bathroom and kitchen fixtures
- Vanities—18 models 64 colors to select from, marble tops
- Water heaters
- Well heaters
- Lawn sprinkler supplies
- Pipe fittings, valves
- Tools
- All materials for any type plumbing and remodeling
- Custom artificial fireplace and mantels
- Check our low, low prices

**24" BATHROOM VANITY**  
Complete with marble top and back-splash, 18"x17" vitreous china, oval bowl, faucet with mechanical drain.  
**\$5950**

Hours: 9 a.m. - 5:30 p.m. Sundays 10 a.m. - 4 p.m. Friday till 8 p.m.  
**PHONE 325-7162**

**AMPLE PARKING**

## We really put our Square Foot in it this time!



2391 SQUARE FEET OF ACTUAL LIVING SPACE

# 5 Bedrooms, 3 Baths FOR ONLY \$44,750

Rug Cleaning  
**SAVE 25%**  
Cash and Carry  
FR 1-4671  
**Spencers RUG CLEANERS**  
30425 HAWTHORNE BLVD. TORRANCE

**\$4,475 DOWN**  
Put all this together on beautiful view sites, high atop the smog-free Palos Verdes Peninsula, and you have the Southland's  
**BEST HOME BUY! MOVE IN TODAY**  
Six beautifully furnished Mesa Palos Verdes model homes are open from 10 a.m. 'til dark daily at the corner of Crenshaw Boulevard and Crest Road on the Peninsula. Telephone is 377-6575.  
Master Built by the Master Builder -- RAY WATT

