

# U.S.D.A. INSPECTED YOUNG TOM

TENDER, PLUMP, DELICIOUS...

# TURKEYS

16 POUND TO 20 POUND AVERAGE WEIGHTS

# 29<sup>c</sup> LB.



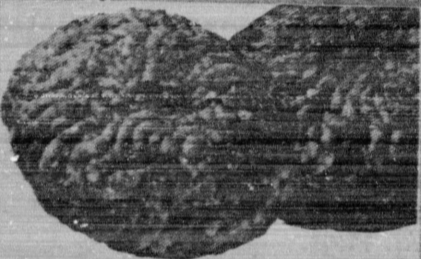
USDA INSPECTED—PAN READY

## CUT-UP FRYING CHICKENS 33<sup>c</sup> lb

U.S.D.A. CHOICE

# BEEF SALE

U.S.D.A. CHOICE



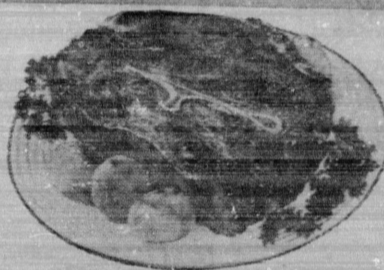
LEAN—TASTY FRESH GROUND BEEF

GROUND FRESH HOURLY **39<sup>c</sup> lb**



USDA CHOICE CHUNKS OF BONELESS BEEF BEEF STEW

USDA CHOICE **69<sup>c</sup> lb**



USDA CHOICE BEEF 7-BONE BEEF ROASTS

USDA CHOICE **49<sup>c</sup> lb**



USDA CHOICE BEEF CENTER CUTS CHUCK STEAKS

USDA CHOICE **39<sup>c</sup> lb**

FARMER JOHN—1st Quality



## SLICED BACON

ONE POUND PACKAGE **49<sup>c</sup>**



- USDA CHOICE O-BONE BEEF ROAST . . . . . 59<sup>c</sup>
- USDA CHOICE—BONELESS ROAST . . . . . 79<sup>c</sup>
- USDA CHOICE BONELESS CUBE STEAK . . . 89<sup>c</sup>
- USDA CHOICE ROUND BONE SWISS STEAK . . 59<sup>c</sup>
- USDA CHOICE FAMILY CUT STEAK . . . . . 79<sup>c</sup>

FARM-FRESH PRODUCE

## BANANAS

CHIQUITA BRAND GOLDEN CENTRAL AMERICAN



2 lbs **25<sup>c</sup>**

## CUCUMBERS

LONG GREEN SLICING

2 for **19<sup>c</sup>**

BROWN SPANISH

## ONIONS



3 lbs **19<sup>c</sup>**

## DANISH STYLED TABLEWARE

4<sup>TH</sup> BIG WEEK



Elegant NEW DANISH STYLED

BRUSH-FINISH Custom CRAFTED Life Fine Sterling...

Unconditionally Guaranteed! For Lifetime Use

• REMOVES ALL STAINING • NEVER RUSTS, TARNISHES • DISINFECTS, DEODORIZES

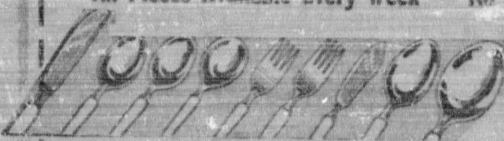
- DINNER KNIVES
- DINNER FORKS
- SOUP SPOONS
- SALAD FORKS
- ICED TEA SPOONS
- TEA SPOONS

BUILD A COMPLETE SET—VALUES TO \$1.25

EACH WEEK FOR THE NEXT SEVEN WEEKS YOU MAY PURCHASE ONE PIECE AT 19<sup>c</sup> WITH EACH \$2.00 FOOD PURCHASE . . . . .

THIS WEEK'S PIECE... SALAD FORK... Only!

TO COMPLETE YOUR SET... All Pieces Available Every Week — No Purchase Necessary



**38<sup>c</sup> ea**

# 19<sup>c</sup> ea

WITH \$2.00 PURCHASE