

FINAL 4 DAYS 1 CENT SALE

WOMEN'S DRESS SHOES
ALL COLORS
VALUES TO 19.95
7.99 2ND PAIR 1¢

FLATS
SIZE 4 TO 10
VALUES TO 8.95
4.99 2ND PAIR 1¢

MEN'S DRESS SHOES
VALUES TO 19.95
8.99 2ND PAIR 1¢

Canvas Casuals HOUSE SLIPPERS
VALUES TO 8.95
3.99 2ND PAIR 1¢

**JACK PURCELL — PF FLYERS
CONVERSE — U.S. KEDS**

MEN'S DRESS SHOES
CURRENT STYLES — ALL SIZES
THESE SHOES ARE FROM OUR REGULAR STOCK—JARMAN, AMERICAN GENTLEMAN, ENGLISH WALKER, BENCH MADE, EDGERTON, ETC. 3 TO 12, 8 TO EEE.
11.99

WE CARRY A FULL LINE OF CHILDREN'S ORTHOPEDIC SHOES. 9 to EE Widths. We Guarantee the Fit and Wear. Doctor's Prescriptions Filled.

CARSON BOOTERY

1211 W. CARSON ST.
TORRANCE 320-0460
CORNER CARSON & NORMANDIE
BankAmericard, So. Habla Espanol
Men and Frl., 9 a.m. - 9 p.m.
Sun., 10 a.m. - 4 p.m.
Tues., Wed., Thurs. Sat., 9 a.m. - 8 p.m.
JOIN OUR SHOE CLUB FREE

Temporary Quarters Asked For New Peninsula College

(Continued from Page 1)
on the Palos Verdes peninsula. Equipment already exists with which to handle this number of students. The present staff of 12 is capable of assuming additional teaching responsibilities in addition to those of planning and administration they now handle.

"In 1962, when we voted to allocate \$5,000,000 for the acquisition of the site, we set the opening date for the college to be in 1964. When it took the trustees 18 months to find and approve the site, it became necessary to extend the date to 1965. It was their feeling that the site should be purchased immediately because of the pres-

NOTICE!

KING SIZE SET
● MATTRESS
● BOX SPRING
Firm Sturdy Construction
79.95

• Terms • Free Delivery
MATTRESS SHOPS
1215 W. CARSON — TORRANCE
(Corner of Normandie)
Phone 320-0654

ures being applied to Long Beach State and the other state colleges in Southern California as well as the two-year colleges such as Harbor and El Camino in the South Bay area that are unable to handle the applications for admission that are being made.

"Now that the condemnation proceedings will not be completed in time to provide the grounds for a permanent campus this year, the Director of Finance has decreed that we should break faith with the people who supported Proposition 2 on the ballot last November to insure the timely opening of the Palos Verdes State College.

"DR. I. PG. CAIN, president of the college, was very much disappointed by Champion's decision. He and the trustees have indicated that they would like to commence instruction as soon as possible in order that they may put to effective use the present planning staff of the new college and give them an opportunity to put into practice their proposed teaching program to evaluate its effectiveness and determine how it meets the needs of the students who will attend. It is our responsibility to assist them in the accomplishment of these purposes," Thomas continued.

"We have the staff, the facilities, and the equipment. With this money we can employ an associate professor and the other personnel necessary to permit 70 to 100 students in the Southwest area commence their college education now, not later. Speaker Unruh and I are both concerned that the needs of these students may be ignored for another year. It is my intention to speak personally with Governor Brown, and I am confident that he will support our position to obtain the opening of the new college this fall," Thomas concluded.

Press-Herald

Member of National Editorial Association
Calif. Newspaper Publishers Assn.
L.A. Suburban Newspapers, Inc.
Verified Audit Circulation Represented Nationally by The Riesen Co.

Publication Office at 3236 W. Sepulveda Blvd.
Published Each Wednesday and Sunday
By King Williams Press, Inc.

GLENN W. PFELL
Publisher

Raid L. Bundy, Managing Editor
Ray Butters, Production Manager
Gene Roberts, Display Adv. Mgr.
Jay Delany, Display Class Mgr.
Evelyn Stillwell, Class Office Mgr.
Darrell Westcott, Circulation Mgr.

Adjudicated a legal newspaper of general circulation by Superior Court, Los Angeles County. Adjudicated Decree No. C218470, June 28, 1954.

SUBSCRIPTION RATES: By Carrier, \$6 a month. Mail subscriptions, \$12.00 a year. Circulation office at DA 5-1615.

Santa Fe Sets Work On Railway

Railway reconstruction work in Torrance may cause some inconvenience to motorists on Crenshaw Boulevard tomorrow, according to Orin "Bud" Johnson, assistant city manager. Santa Fe Railway officials have announced they will reconstruct tracks running along Madrid Avenue in the near future.

Tomorrow's work will involve the unloading of extremely long rails and may disrupt traffic on Crenshaw Boulevard, Johnson said. Tentative plans call for the

Zone Plan For Lomita Is Studied

Lomita city councilmen are now meeting in a series of special sessions to discuss plans for a comprehensive general plan for the city, according to City Administrator Stanley Greene.

Councilman Clyde S. Reardon has said the city will actual reconstruction of the tracks on Feb. 2. Both Torrance Boulevard and Carson Street may be temporarily closed in the area.

The city has provided for emergency vehicle routes, Johnson said.

"negotiate a contract for a master plan in the near future."

Goals of the master plan, according to councilman Wilbur F. Hammond, are to retain a balance between residential and commercial areas and avoid duplication in planning. The master plan also would be used as a policy guide for future land use zones.

The council is studying a number of proposals advanced for the master plan.

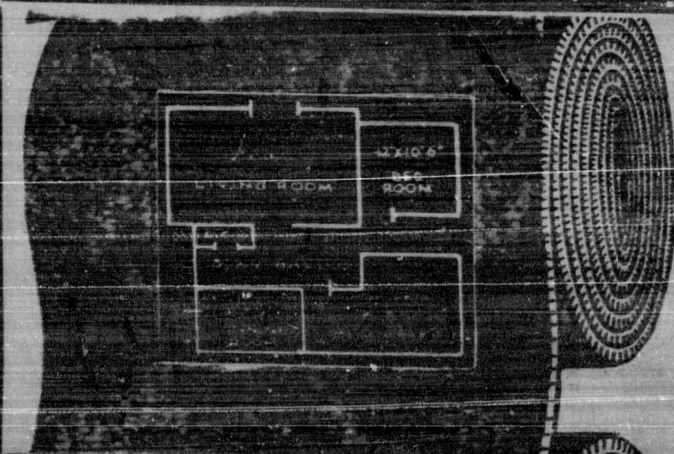
SCARLET FEVER

Three cases of scarlet fever were reported from the Torrance area for the week ending Dec. 19, according to the Los Angeles County Health Department. One case each of syphilis and gonorrhea was noted also.

OPEN 9 TO 9 DAILY

YOUR ENTIRE HOME CARPETED WALL-TO-WALL

WITH 100% CONTINUOUS FILAMENT NYLON...
4 DAYS ONLY THURS., FRI., SAT., SUN.



Yes, an entire house of carpeting—60 sq. yards installed wall to wall in your living room, dining room, hall and 2 bedrooms at these low-low Artistic prices.

100% CONTINUOUS FILAMENT NYLON

YOUR ENTIRE HOME **\$250**

NOTHING ELSE TO BUY

100% CONTINUOUS FILAMENT DU PONT 501 NYLON

YOUR ENTIRE HOME **\$350**

NOTHING ELSE TO BUY

OPEN SUN. 10 A.M. - 5 P.M.
DAILY 9 A.M. - 9 P.M.

No Money Down • Bank Terms

Samples Brought to Your Home
No Obligation
Phone Today
PR 0-4371

Artistic Carpets

20352 Hawthorne Blvd., Torrance



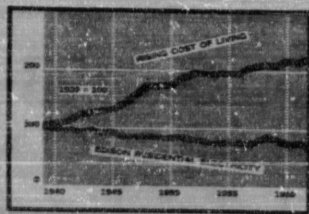
Smile, You're on the Network

Don't be their hiding the censors, madam. This happens to be an invisible network. You see, every time you use Southern California Edison electricity you unknowingly plug into a "network" of interconnected power facilities that blankets Edison's 65,000 square mile service territory.

Interconnection of generating plants and other equipment reduces operating costs and saves you money because Edison can supply your electricity from the most efficient facilities available. And in the event of any kind of disaster, electricity can be made available to you from someplace else on the network.

Speaking of interconnected electric systems, the "WEST" regional electric power development program, underway by Edison and other Western power suppliers, will save billions of dollars in construction and operating costs over the next 20 years. This project will help provide abundant electricity at the lowest possible rates for the growing Southwest. Additionally, plans underway by Edison and other West Coast utilities, together with the government, will bring surplus electric power from the Pacific Northwest to Southern California.

Interconnection of facilities is just one of the ways Edison and other investor-owned electric utility companies help keep the cost of electricity down.



Cost of living vs. cost of Edison residential electricity

While the cost of living has risen markedly during the past several years, the average cost of a kilowatt-hour of electricity to Edison residential customers is 28% lower than it was in 1939.

Southern California Edison **SCE**
An equal opportunity employer