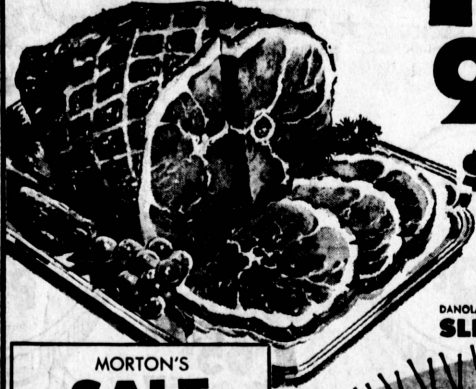


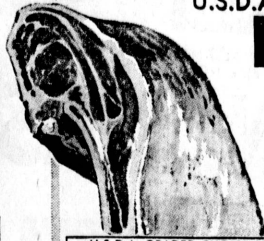


GRAND TASTE  
OL' VIRGINIA CANNED

**HAM**  
9 LB. CAN  
**\$7.29**  
THE FINEST!  
LEAN  
NO WASTE



DANOLA SLICED BACON 12 OZ. PKG. **79c**



U.S.D.A. GRADED CHOICE AMERICAN FRESH LAMB

**LAMB SHOULDER ROAST**  
YOU SAVE 20c lb.  
**49c** LB.

U.S.D.A. GRADED CHOICE SHOULDER  
**LAMB CHOPS 79c**

ROUND BONE **LAMB CHOPS 89c** LB.  
FRESH MEATY **LAMB BREAST 19c** LB.  
FRESH MEATY **LAMB SHANKS 49c** LB.  
FRESH MEATY **LAMB NECKS 39c** LB.

MORTON'S  
**SALT**  
26 OZ. ROUND **10c**

DETERGENT  
**DASH**  
GIANT SIZE (INC. 10c OFF) **59c**

LIBBY'S  
**PINEAPPLE JUICE**  
46 OZ. CAN **19c**



FRESH PORK **SHOULDER ROAST 49c** LB.  
FRESH PORK **BUTT ROAST 59c** LB.  
FRESH MEATY **PORK STEAKS 69c** LB.  
FRESH MADE BULK PORK **SAUSAGE 49c** LB.  
OL' VIRGINIA **SLICED BACON 79c** LB.  
FRESH-LEAN **GROUND BEEF 39c** LB.

U.S.D.A. CHOICE  
**STEER BEEF**  
TENDER JUICY **CHUCK STEAK 59c** LB.  
TENDER JUICY THICK **SWISS STEAK 69c** LB.  
CENTER CUT **59c** LB.  
ARM CUT **69c** LB.  
TENDER JUICY **CHUCK ROAST 79c** LB.  
BONELESS **89c** LB.  
TENDER JUICY **FAMILY STEAK 89c** LB.  
BONELESS **89c** LB.

**GLOBE A-1 SPECIALS**  
SHELL MACARONI  
SALAD MACARONI  
LARGE ELBOW MACARONI  
CUT ELBOW MACARONI  
1 LB. PACKAGE MIX 'EM or MATCH 'EM **5 FOR \$1**

BEST FOODS  
**MAYONNAISE**  
QUART JAR **49c**



**BOYS FARM FRESH PRODUCE**  
EXTRA FANCY WASHINGTON STARKING DELICIOUS  
**APPLES 2 LBS. 29c**  
FRESH PICKED YOUNG TENDER **CARROTS 10c** 1 LB. CELLO PKG.  
FRESH CRISP **UTAH CELERY 10c** EA. LARGE STALK  
SWEET RIPE HAWAIIAN **PINEAPPLE 39c** EA.

**JACK & THE BEANSTALK SALE-SALE-SALE**  
MIDGET PEAS 16 OZ. CAN YOUR CHOICE  
WHOLE GREEN BEANS 16 OZ. CAN  
SLICED GREEN BEANS 16 OZ. CAN  
CUT GREEN BEANS 16 OZ. CAN  
CREAM STYLE CORN NO. 2 1/2 CAN  
WHOLE KERNEL CORN NO. 2 1/2 CAN  
**4 FOR \$1**  
CREAM STYLE CORN 16 OZ. CAN  
WHOLE KERNEL CORN 16 OZ. CAN  
SLICED CARROTS 16 OZ. CAN  
**5 FOR \$1**  
CUT GREEN BEANS NO. 2 1/2 CAN  
SWEET PEAS NO. 2 1/2 CAN  
SLICED GREEN BEANS NO. 2 1/2 CAN  
WHOLE WAX BEANS 16 OZ. CAN  
**3 FOR \$1**

SPRINGFIELD  
**COFFEE**  
1 LB. CAN **59c**  
KERN'S  
**NECTARS 10c**  
ASSORTED FLAVORS 12 OZ.



SUGAR RIPE  
**DRIED FRUIT 49c**  
PRUNES 2 LB. - APRICOTS 8 OZ. MIXED FRUIT 12 OZ.  
EXTRA FANCY

MORTON'S FROZEN  
**DINNERS 39c**  
EXCEPT SHRIMP 11 OZ. PKG.

DAILY DECORATED FILLED  
**EASTER BASKETS & SAND PAILS**  
FILLED WITH GOODIES **69c UP**

JR. DEPARTMENT STORE  
HOLLOW MOLD  
**CHOCOLATE BUNNIES**  
INDIVIDUALLY BOXED **10c** EA.

DECORATED HOLLOW MOLD  
**CHOCOLATE EASTER EGGS**  
FRUIT & NUT ALSO **29c** UP

PLUSH - CUDDLY  
**EASTER BUNNIES**  
COMPLETE SELECTION **98c** UP

**EASTER BASKET FIXINS**  
GREEN WAX GRASS 9c BAG  
EASTER BASKET CELLO WRAP 19c ROLL  
EMPTY ASST. EASTER BASKETS 10c UP  
FOIL WRAPPED CHOCOLATE EASTER EGGS 14 OZ. BAG 88c  
PASTEL COLORED EASTER BOWS 10c EA.  
ALSO MANY OTHER EASTER NOVELTIES TO CHOOSE FROM

KODAK 620 - 120 - 127  
**KODACOLOR FILM** REG. \$1.15 **79c** ROLL  
FAMILY SIZE GLEEM  
**TOOTH PASTE** REG. 95c **79c**  
LARGE TUBE LIQUID  
**PRELL SHAMPOO \$1.09**

**FROZEN FOOD**  
MORTON'S 8 OZ. PKG.  
**MACARONI & CHEESE 19c**  
RUPERT'S 14 OZ. PKG.  
**FISH STICKS 59c**  
DOWNY FLAKE  
**WAFFLES 2 FOR 29c** 6 CT. PKG.

REDONDO: Manhattan Beach and Inglewood (OPEN 'TIL 12 MIDNIGHT)  
HERMOSA BEACH: Prospect & Pier Ave. (OPEN 'TIL 12 MIDNIGHT)  
GARDENA: Redondo Beach & Van Ness (OPEN 'TIL 12 MIDNIGHT)  
TORRANCE: Normandie & Carson (OPEN 'TIL 12 MIDNIGHT)  
WILMINGTON: Avalon at Anaheim (OPEN 'TIL 12 MIDNIGHT)



AD GOOD 7 FULL DAYS  
Thurs. Mar. 31st THRU  
Wed. April 6th