



DELIGHTFULLY STUPID . . . The carpenter, weaver, bellow-mender, tinker, joiner, and tailor combine to present the "bad play" within the play, "A Midsummer Night's Dream," at El Camino College. Opening Friday, the production will be staged four times. The actors are, from left, Steve Flankos, Mike McCann, Marty Lair, Tom Casperatti, Bill Byrne, and Ken Heckman. Performances are Friday and Saturday.

'Midsummer Night's Dream' Sets Two More Performances at EC

Elves and mortals match wits in El Camino College's spring presentation of "A Midsummer Night's Dream," performed in the Campus Theater Friday and Saturday. Two other performances are planned next Friday and Saturday.

Hilarity abounds as fairy magic forces lovers to wander through woods, lost and bewildered. For the actors and actresses playing the principals, the Shakespearean play has taken on a personal meaning. Barbara Burns, who portrays Helena in the play, considers it a wonderful farce.

A STUDENT of Shakespeare, Miss Burns was the assistant director of El Camino's last Elizabethan presentation, "King John." She sees herself as having a bubbling personality, one that fits in well with the character of Helena.

Having begun her acting in high school, Miss Burns hopes to have a career in show business. Demetrius, lover to Helena, is played by Joe Silver, a theater arts major. In describing "A Midsummer Night's Dream," he calls it a "beautiful piece of fluff which has something for everyone in it."

THOUGH NEW to comedy, Silver has acted in many other plays, portraying the role Phillippe, the Bastard, in El Camino's presentation of "King John." He teaches dramatics to children in Torrance.

IN LOVE with Hermia until affected by a love potion, Bill Simonson plays Lysander.

Agency to Handle Del Amo Center

The promotion of the Del Amo Center, a 200-acre financial, commercial and residential complex being developed by Great Lakes Properties, Inc., and Guilford Glazer and Associates will be handled by Jay Chiat and Associates of Santa Ana.

Chiat was recently named agency for Great Lakes Properties' 4,700-acre Rancho Camarillo project in Ventura County.

First unit of the Del Amo master plan to get under way is the \$30 million financial center, a series of high-rise office towers and satellite buildings to be constructed on 20 acres at the northwest corner of Hawthorne Blvd. and Carson St. When fully developed, the financial center will have more than one million square feet of office space and a like amount of garage parking area.

Union Bank has announced that it will establish its ninth regional office in the center. It will occupy the first three floors of the initial 13-story structure.

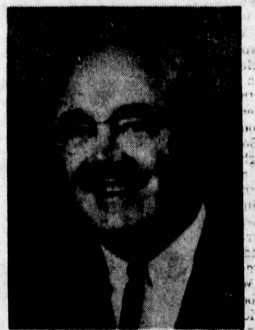
The Chiat organization is preparing a business paper campaign directed towards prospective lessees. The agency will also develop collateral material and assist with public relations.

Though he did play Count Melun in "King John" last year, he is surprised at getting this part, the largest he has ever enacted.

Fond of music, theater arts and Shakespeare, Simonson hopes for a career in show business. Planning on changing from a music major to theater arts, he feels that theater presents a "good education on life."

Certain time for the presentations will be at 8:30 p.m. Tickets may be purchased at the Student Store at the Campus Center for \$1.50 or at the box office on the evenings of the performances.

NICKOLAS "Nick" DRALE



Candidate for MAYOR of TORRANCE

ASKS SOME IMPORTANT QUESTIONS

- Why has the city of Torrance lost a great amount of prestige among state and community leaders throughout California?
- Why, when appearing before our City Council, have many residents not been treated in a dignified and courteous manner?
- Why, when it is obvious that Torrance is the perfect location for a South Bay College, have we lost that institution to another area?
- Why is there little or no communication between city officials and the people to determine the opinions of residents on important issues?

If these questions trouble you . . . please support Nick Drale for Mayor of Torrance, April 12.

Thank You.

Drale For Mayor Campaign Hdqtrs., 1960 Torrance Blvd. — Ph. 320-6660, FA 8-1311

LUMBER DISCOUNT CENTER

BUILDING SUPPLIES

8-FT. RUSTIC LOG SLAB FENCING
FIR 4 1/2" WIDE **29** ^C/_{ea}

WALNUT PANELING
RE-FINISHED **\$2.39** EACH
4'x8'x1/8" **14** ^C/_{ea}

ACOUSTIC CEILING TILE
12" x 12" x 1/2"
WHITE WITH PIN PUNCH PATTERN
REG. 21c NOW **14** ^C/_{ea}
(HURRY — LIMITED STOCK)

9" x 9" FLOOR TILE (Limited Quantity) **\$5.99** PER BOX
VINYL ASBESTOS (Box Covers) 45 Sq. Ft. NOW

VERMONT LUMBER

21732 So. VERMONT
ACROSS FROM HARBOR GENERAL HOSPITAL
328-8370

OPEN DAILY 8 TO 5:30
SUNDAYS 8 TO 4

CALIFORNIA GROWN
U.S.D.A. GRADE A
FRYING CHICKENS
Cut Up At No Extra Charge

45

Prices Effective Thursday, Mar. 31,
Thru Wednesday, April 6

Fresh Grade A
CHICKEN LIVERS

69

^C/_{lb}

BAR-M—BONELESS TAVERN HAM

WHOLE OR HALF
RECOMMENDED BY CHEF MIKE ROY

\$1.39

lb.

CENTER CUT

PORK CHOPS

EXTRA LEAN **98** ^C/_{lb}

SPARE RIBS

FARMER STYLE **59** ^C/_{lb}

CHUCK STEAKS

U. S. D. A. CHOICE **59** ^C/_{lb}

THICK SLICED

Bar M Bacon . . . 79 ^C/_{lb}

U.S.D.A. CHOICE **69** ^C/_{lb}

U.S.D.A. CHOICE

7-Bone Roast . . . 59 ^C/_{lb}

SLICED NORTHERN **79** ^C/_{lb}

LOBSTER TAILS

Avg. Weight 8 lbs. 10 oz. **1.59** ea.

NEW YORK

STEAK 1.98 lb

U.S.D.A. CHOICE **1.69** lb

HAPPY HOURS 9-6 DAILY 9-8 FRI. 9-6 SUN.

ROLLING HILLS PLAZA — GRESHAW & PACIFIC COAST HWY

Sir Loin

MEAT SHOPPE

PHONE 326-9611 323-0166