



PROMOTED . . . Two women employes of the Bank of America's East View branch in San Pedro have been promoted to assistant cashier. Mrs. May McGillivray (left) is the operations officer and Mrs. Roberta Philbrick is the lending officer. Manager Doug Gould says there is nothing unusual about women officers at his branch—all 11 employes are women.

Salad Important To Family Meals

Salads are important in planning meals for your family. If you skip a salad too often, you may not be getting a full quota of fruit and vegetable servings into the daily eating scheme.

Fruit salads offer many possibilities for adding interesting variety to your menus. A small salad of tart fruits makes an excellent beginner for a hearty meal. A sweeter version may double for dessert another time.

Fruits go well in salads to accompany the main course, too. Try tantalizing combinations of fruits — intriguing mixes of vegetables and

fruits. And serve them often. **MOUNT VERNON SALAD**
 1/2 pkg. lemon-flavored gelatin
 1/2 pkg. cherry-flavored gelatin
 1/4 tsp. salt
 1 can pitted tart cherries
 Water
 2 Tbsp. vinegar
 1 C. diced peeled apples
 1 C. chopped celery
 Lettuce

Combine lemon and cherry gelatin and salt in a bowl. Drain juice from cherries, measure and add water to make 1 1/2 C. liquid. Heat to boiling and pour over gelatin. Stir to dissolve gelatin. Add vinegar and cool until syrupy. Fold in well-drained cherries, apples and celery. Pour into molds. Chill until firm. Unmold onto crisp lettuce. Pass Cheese - Mayonnaise.

CHEESE-MAYONNAISE
 1/4 C. mayonnaise
 1/4 C. evaporated milk
 1/2 C. grated American cheese

Put mayonnaise into a small bowl. With a fork, gradually whip in evaporated milk. Fold in grated cheese.

BERMUDA SALAD BOWL
 2 large oranges
 2 tart red apples
 1 medium size sweet onion, minced
 French dressing
 Paprika

Peel oranges, cutting away all the white membrane, and slip out the segments. Core and dice apples. Toss orange segments, apple and onion with well-seasoned French dressing that has been highly colored with paprika. Serve in lettuce-lined bowl.

FRUIT SLAW
 Mix a cup or more of cubed pineapple, orange segments or diced red apple with two cups finely shredded cabbage. Add enough Cream Dressing to moisten and serve in crisp lettuce cups.

CREAM DRESSING
 1/2 C. sugar
 1/2 C. cream or evaporated milk
 Dash of salt
 Vinegar to taste

Mix sugar and cream (or evaporated milk) in a small bowl. Add salt and stir until sugar is dissolved. Slowly stir in vinegar until mixture thickens and suits your taste.

SPARKLING FRUIT MOLD
 1 pkg. lime-flavored gelatin
 1 C. boiling water
 1 C. ginger ale
 1 large orange
 1 C. canned pineapple cubes
 1 C. sliced canned peaches
 Salad greens

Dissolve gelatin in boiling water. Cool, but do not let it thicken. Add ginger ale and chill until it begins to set. Peel orange, removing all of the white skin, and cut in cubes. Fold orange and well-drained canned fruits, saving a few peach slices for garnish, into gelatin. Pour into mold. Chill until firm. To serve, unmold onto crisp salad greens and garnish with peach slices.

Assessor Has Office In Lomita

County Assessor Phil Watson today reminded residents of the Southwest area that the headquarters for Region 14 of the Assessor's Department is now located in Lomita.

The regional office, at 2049 Pacific Coast Hwy. was opened last fall to serve Catalina, Dominguez, Harbor City, Lomita, Palos Verdes Estates, Redondo Beach, Rolling Hills, Torrance, San Pedro, and Wilmington.

Some residents of the area apparently have been unaware that the new headquarters had replaced a regional office previously located in San Pedro, Watson said.

Copies of the preliminary assessment roll for the region, real estate transfer journals, maps, and other records are available in the office for the convenience of local taxpayers.

Veterans may also file their property exemption claims in the regional office.

Region 14 covers the area bounded by 190th Street on the north, Long Beach Boulevard on the east and the Pacific Ocean on the south and west. Office hours are 8 to 5, Monday through Friday. The telephone is 325-9500.

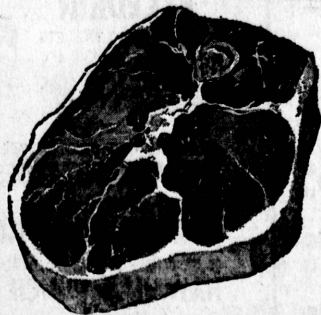
Area Man to Run Program Department

Cleon W. Winslow has been appointed manager of program analysis in the requirements analysis office at Aerospace Corp. in El Segundo.

Winslow has been associated with the company for the past three years. Initially he was with the System Planning Division and later joined the Satellite Systems Division. Prior to joining Aerospace, he was with the Gillilan Corp.

Winslow received a B.S. E.E. and a B.A. in mathematics from the University of Oklahoma in 1955 and a M.S. E.E. from the University of Southern California in 1960.

WESTERN MEAT PACKERS OUTLET



Round STEAK 57^c lb

T-BONE STEAK...79^c lb

TOP SIRLOIN STEAK	CUBED BRK'FST STEAK	PORTERHOUSE STEAK	FRESH GROUND CHUCK	FRESH GROUND ROUND
89^c lb	87^c lb	85^c lb	2^{LBS} \$1⁰⁵	59^c lb

LEAN FRESH GROUND GROUND BEEF	BONELESS TOP ROUND STEAK	69^c lb
3^{LBS} 89^c		

WE QUIT!

THIS IS IT, FOLKS . . .

EVERY THING GOES THIS WEEK WITH UP TO 50% DISCOUNT ON SOME ITEMS!

BUY \$25⁰⁰ Worth of Discount Items and Receive an Additional 10% DISCOUNT!

20% DISCOUNT

WHILE THEY LAST!
 THOUSANDS AND THOUSANDS SHELF ITEMS LEFT!
Shop Now AND SAVE!

ON MOST GROCERY ITEMS IN STORE SUBJECT TO STOCK ON HAND. MEAT PRICES AS ADVERTISED !! ALL SALES FINAL!

★ WE ARE NOT BUYING ANY MORE GROCERY STOCK! COME IN AND GET THE BEST BUYS OF STANDARD BRAND MERCHANDISE WHILE IT LASTS!

STEWARTS MARKET

234th ST. AT WESTERN AVE.

HOURS—MONDAY THRU SAT., 9 A.M. - 7 P.M. — SUNDAYS 9 A.M. 'TIL 6 P.M.

PLENTY OF PARKING SPACE