

Vast Variety Sensational Buys!

27 THROUGH FEBRUARY 2, 1966

**DIGESTIBLE
MISSION
SOIL
29c** save 12c

FROZEN FLORIDA
**LIBBY'S
ORANGE JUICE**
6 6-oz. cans **\$1** save 38c

Golden cream style or whole kernel. Tall 303 can
et-Corn 5 for \$1
Tender, young garden fresh peas. Tall 303 can
et-Peas 5 for \$1
Chocolate, Lemon, Vanilla. For lunches. 1 1/2 lb. pkg.
side Cookies 3 for \$1
Levils food, spice, white, yellow, dark fudge. 19 oz. pkg.
Mixes 29c

YELLOW CLING SLICES OR HALVES
**LIBBY'S
PEACHES**
large 2 1/2 can **19c** save 8c

SACRAMENTO
**TOMATO
JUICE**
10c

Golden Creme. First quality. Made from the finest cream. 1 lb. pkg.
Grade "AA" Butter 73c
The basic ingredient for a delicious sealed treat with cold cuts. 300 can
S & W Kidney Beans 6 for \$1
Zippy Fluff. Incl. 20c off. Now, no more annoying nylon string! 1/2 gal.
Fabric Rinse 69c
Beach-Nut. Many varieties expand baby's menu and palate. 4 oz. jar
Strained Baby Food 12 for \$1

SAUCE
\$1

Produce



U.S. NO. 1 ALL PURPOSE
**RUSSET
POTATOES**

10 pound cello bag **39c**

MARSH SEEDLESS DESERT GROWN
**ARIZONA
GRAPEFRUIT**

8 pound cello bag **39c**



GARDEN FRESH, LARGE STALK
**CRISP
CELERY**
10c

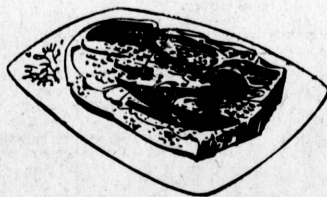
LARGE SIZE BROWN
**STEAK
MUSHROOMS**
half pound **35c**

CALIFORNIA GROWN
ALL VARIETIES
**BAREROOT
ROSES**
field grown 2 years **39c**

ARTIFICIAL FLOWERS 1/2 PRICE SALE



Beautiful every room with gorgeous bouquets of Spring flowers — gladiolas, pussy willows, iris, camellias, decorator roses and many others — hurry — they won't last long at these low prices.
Flowers marked 19c will be sold for only 10c
Flowers marked 29c will be sold for only 15c
Flowers marked 39c will be sold for only 20c



U.S.D.A. "CHOICE" BEEF
**BONELESS
TOP SIRLOIN**
\$1.29 lb.

U.S.D.A. "Choice" Beef. A fine steak the whole family loves. Tender and juicy beef flavor.
PORTERHOUSE STEAK \$1.19 lb.
U.S.D.A. "Choice" Beef. Top Round, Sirloin Tip, Bottom Round. Wonderful braised in wine.
BONELESS STEAKS 98c lb.
Lean and meaty. Fresh ground hourly. Perfect for all your special ground beef recipes.
FRESH GROUND CHUCK 59c lb.
Extra lean. Fresh ground hourly. The indispensable ingredient to rich, savory spaghetti sauce.
LEAN, FRESH GROUND ROUND 69c lb.

U.S.D.A. "CHOICE" BEEF
**BONELESS
ROUND STEAK**
full center cut **79c** lb.



U.S.D.A. "CHOICE" BEEF
**T-BONE or CLUB
STEAK**
\$1.09 lb.

Lancaster Farms. U.S.D.A. Grade "A" California-grown. Fresh daily. Stuff and roast.
ROASTING CHICKENS 49c
Perfect jiffy meat for lunches or suppers. Or serve for breakfast.
KOLD KIST FROZEN STEAKS 10 2-oz. steaks \$1
Kold Kist Frozen. Somewhat larger steaks. Good for a quick steak sandwich with catsup.
BUTTERED BEEF STEAKS 4 4-oz. steaks 59c

U.S.D.A. "CHOICE" BEEF
**BONELESS
OVEN ROASTS**
RUMP SIRLOIN TIP BOTTOM ROUND **89c** lb.



U.S.D.A. GRADE "A"
**YOUNG HEN
TURKEYS**
flash frozen **39c** lb.

Dubuque Royal Buffet, Marmel Red Shield, Swifts Premium, Farmer John
SLICED BACON
1-lb. pkg. **79c**

Frozen. Heat, serve. Fresh seafood flavor. 1 lb. bag
Certi Fresh Scallops \$1.19
Gorton's. Serve for cocktail treat. Frozen. 7 oz. pkg.
Breaded Tiny Fishcakes 29c
Lean, meaty, grain-fed Midwestern Pork.
Pork Spareribs 69c

Old Fashioned Delicatessen



Lean beef brisket, spiced to perfection. Reg. 2.69
Cooked Corned Beef \$2.29 lb.
Kidney bean salad in flavorful dressing. Reg. 45c
Homemade Bean Salad 35c
From lean beef. Perfectly seasoned. Reg. \$1.09 lb.
All Beef Bologna 89c

DEL AMO
SHOPPING
CENTER
CORNER OF
HAWTHORNE &
SEPULVEDA

**MAGIC
CHEF**

