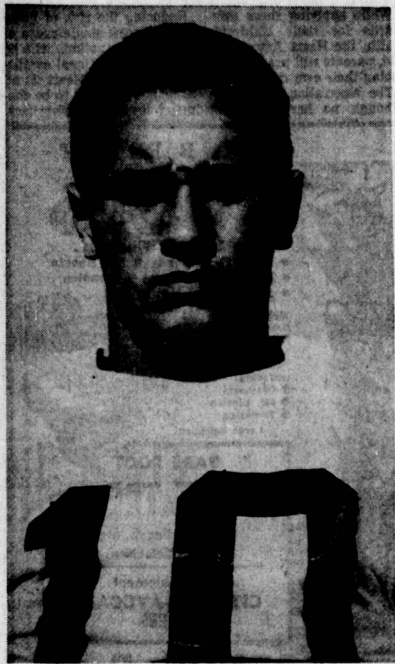


# Tartars Beat Jordan, Face Centennial Next



DANNY GRAHAM... Bishop Montgomery quarterback is the only junior named to the All-CIF "AAA-AA" football team. He was named to the second team backfield. (Press-Herald Photo)

## Graham Selected On CIF 2nd Team

Announcement of the All-CIF "AAA-AA" football team for 1965 includes Bill Tapp and Mark Carpenter of Palos Verdes on the first team. The only junior to be honored is Danny Graham, Bishop Montgomery quarterback. He was named to the second string backfield. Selected as "players of the year" in the "AAA-AA" division were Brian Porter of Crespi, Jerry Moore of the California School of the Deaf, and Gil Gonzales of Santa Clara. West Covina, which defeated Crespi, 7-0, for the Triple-A championship, placed End Sandy Durko, Guard Rick Pertulla, and Back Don Yax on the first team. Palos Verdes, winner of the AA-playoffs, landed Carpenter at a guard position and Tapp in the backfield. Graham is the first athlete at Bishop Montgomery to be named to an All-CIF team. Selections were made by the Helms Foundation All-Southern California Board of Athletics. Graham led Bishop Montgomery to an 8-1 record and second place behind Crespi in the Camino Real League. His season totals were 68 completions for 13 touchdowns and 1,092 yards. Tapp ran for 1,492 yards in 203 runs for a 7.35 average. His 22 touchdowns includes at least one in each Guard Rick Pertulla, and Back Don Yax on the first team in each of P.V.'s three CIF playoff games.

## Hill Rise, Native Diver Battle in San Carlos

El Peco Ranch's Hill Rise, the only horse to win the Santa Anita Derby and the Santa Anita Handicap in successive years, makes his winter debut in the \$50,000 San Carlos Handicap at seven furlongs Saturday. One of Hill Rise's chief opponents in the weekend special is Native Diver, sensational black speedster who will attempt to duplicate his feat of last winter in winning both the Palos Verdes and San Carlos Handicaps and the walking off with "sprinter of the meeting" honors. No horse other than Native Diver has won back-to-back runnings of the Palos Verdes. Secondly, no other horse has ever won the Palos Verdes with as much as 129 pounds on his back. Jerry Lambert, who coaxes more run out of Native Diver than any jockey who ever rode him, will again have the mount on his favorite horse. The pair got over a neck in front of Isle of Greece opening day in the 15th running of the Palos Verdes with the giant Sledge third and Cupid fourth.

## South Gains Victory

Long Beach Jordan was the 14th loser to the Torrance High basketball team this season. Playing in the first round of the Compton Tournament yesterday the Tartars outscored the Panthers, 32-5, in the third period for a convincing 92-63 victory.

South High opened up against El Monte for an 87-63 win in the same event. The Spartans were scheduled to meet the winner of the Long Beach Poly-Bellflower game tonight.

Steve Kuchenbecker returned to form for South for 28 points. He got eight field goals and 12 straight free throws. Ed Holmes got 26 points, including 8-for-8 at the free throw line.

Torrance gets a tough test at 7:30 tomorrow against Centennial in the quarter-final round. The Apaches, Coast League winner last year, have veterans 6-6 Sleepy Montgomery and 6-7 Sam Hunter to contend with in the quarter-final game.

Against Jordan the Tartars went on a free throw scoring spree as the Panthers committed 24 personals. One was not called when Robin Fisher was sent crashing into the back wall on an attempted layup shot. He was to receive attention today for an ailing back because of the incident. Foul shots accounted for 34 of Torrance's 92 points. Bart Johnson got 13 of 17 at the free throw line. Along with 11 field goals, he had 35 points. Rich Kreul got 11 free throws in an 18-point effort.

The top game in the Pioneer League is between West at Aviation.

The full schedule of game at 8 p.m. is:

TORRANCE, 92-63	
Torrance (92)	FG FT PF TP
Kreul	4 10 4 18
Johnson	3 15 4 28
Thompson	3 15 4 28
Carpenter	5 10 4 20
Miller	1 2 0 4
Whitney	1 2 0 4
Oliver	1 2 0 4
Group	0 0 0 0
Guiden	0 0 0 0
Crockett	0 0 0 0
Totals	29 34 16 82
Score by Quarters	
L.B. Jordan (63)	FG FT PF TP
Borchard	8 5 3 21
Pherson	0 0 0 0
Smith	0 0 0 0
Christiansen	0 0 0 0
King	0 0 0 0
Cowan	0 0 0 0
Westling	0 0 0 0
Anderson	0 0 0 0
Hickway	0 0 0 0
Totals	23 16 24 63

Score by Quarters

South, 87-63	
SOUTH (87)	FG FT PF TP
Kuchenbecker	7 12 4 28
Miller	1 2 0 4
Parsons	0 0 0 0
Holmes	10 10 4 24
Faustlon	0 0 0 0
Turner	0 0 0 0
Sanov	0 0 0 0
Brown	0 0 0 0
Totals	30 27 20 87
Score by Quarters	
El Monte (63)	FG FT PF TP
Bystedt	2 4 4 12
Brenned	0 0 0 0
Watkins	0 0 0 0
Valdez	0 0 0 0
Hoyva	0 0 0 0
Arnhold	0 0 0 0
Hankuk	0 0 0 0
Strange	0 0 0 0
Totals	26 11 20 63

## Blades Open Home Stand

Los Angeles will open a five-game home stand Thursday night at the Sports Arena which General Manager Coach Lynn Patrick hopes will get the Blades back into the Western Hockey League playoff race.

First place Victoria will furnish the opposition for the 8 p.m. faceoff Thursday. San Francisco will follow at 7 p.m. Sunday. Seattle will be here for a two-game series Jan. 13 and 16 with Portland winding up the home stand Jan. 20.

Los Angeles is battling Seattle and San Francisco for fourth place — the last spot to qualify for the post-season playoffs.

The Blades, however, must start their drive against a Victoria team which has beaten them in three of four meetings. The Blades' win over Victoria came in the Leafs only other Sports Arena appearance.

Forwards Leo LaBine and Norm Johnson lead a Blade attack. They have produced 12 goals in four games against Victoria. LaBine, on his way to a 40-goal season and leading the WHL in goals scored, and Johnson, tied for the WHL lead in assists, have accounted for eight points against the Leafs.

Victoria's Milan Marcetta, battling Johnson for individual league scoring honors, has scored nine points against the Blades including six goals.

John Sleaver is tops in assists with five.

West at Aviation. El Segundo at Lennox. Lawndale at Palos Verdes.



SKIPPERETTES... Sally Lundblade, Charlotte Nettles and Linda LaMarre climb aboard the Countess 44' for the sailboat portion of the double-header boat show at the Long Beach Arena starting Friday.

## Pre-Season Results

LONG BEACH	EL CAMINO	VALLEY
85 Fullerton	75 Orange Coast	90 Sequoias
84 Santa Ana	116 Sequoias	91 Ventura
86 Harbor	78 Compton	102 Antelope Val.
87 Compton	80 Harbor	84 Genialde
116 Oral Roberts	82 Glendale	71 Pierce
88 LACC	102 Ventura	87 Merced
99 Orange Coast	78 USC Frosh	82 Citrus
96 Pasadena	88 LACC	91 San Jac.
98 San Jose	104 Trade Tech	74 LACC
99 Chabot	88 LACC	86 San Jac.
103 USC Frosh	108 Pasadena	74 Imperial Val.
96 San Jose	84 Harbor	79 Trade Tech
87 Santa Monica	71 Compton	81 Harbor
103 Pasadena	88 Harbor	83 Compton
93 Pierce	118 Harbor	84 BCC
83 Fremont	128 Mira Costa	84 BCC
88 Valley	90 East L. A.	85 LACC



CROSS-COUNTRY RUNNERS... Lenny Jay (left) and Jeff Marsee (right) of South High School have been rated fifth and sixth on the All-CIF honor roll for 1965. They were clocked in 8:58 and 8:59 among 268 contestants in the CIF championship meets last month. The Spartans are also ranked 14th in the nation as a team.

## CROSS-COUNTRY RUN

### South Spartans Take 14th In National 2-Mile Event

In national cross country competition, South High of Torrance is listed in 14th position by Track and Field News Honor Awards. Running against Aviation and West High in a meet Dec. 7, winning times for a 2-mile run were posted among schools throughout the country.

South was 34th in the competition the previous year, and Coach Dick Scully said his Spartans will attempt to get within the top five next season. Results of the 2-mile meet which led to South's 14th place ranking are: Varsity-

SOUTH (A-TEAM)	
Lenny Jay	9:38.5
Jeff Marsee	9:39
George Watson	10:06
George Hallwell	10:07
Steve Kaplan	10:24
Team	49:54.5
WEST (A-TEAM)	
Phil Rafferty	9:49
Tom Purkey	10:04
Bob Clark	10:19
Bill Franz	10:49
Carl Rodefer	10:56
Team	51:58
AVIATION (A-TEAM)	
Jim Dillon	9:46
Doug Pirkle	9:56
Dave Reese	10:50
Mike Scotten	11:04
Lyle Grommett	11:12
Team	52:48
SOUTH (B-TEAM)	
Jeff Walker	10:46
Tom Leavitt	10:47
Ron Greene	10:54
Steve Edmonds	10:56
Paul Kaplan	10:59
Team	54:22
WEST (B-TEAM)	
Jim Tobin	11:04
Jim Poush	11:13
Tom Reed	11:14
Rich Tussing	11:15
Mike Fraser	11:16
Team	56:02

## Sportsman's Show Dates Announced

Dates for the 21st annual Sportsman's Vacation & Travel Show — the nation's largest recreational exposition — have been set for March 25 through April 3, in Los Angeles' Pan Pacific Auditorium. Producer is H. Werner Buck.

This year's Sportsman's Show provides Southland out-of-doors fans acres of booths, filled with the latest in equipment for fishing, hunting, camping, travel, boating and other recreational pursuits.

The sports wonderland will also feature exhibits from many states, Canada and Mexico, providing families with first-hand information for planned vacations away from home. More than 250,000 persons annually visit the \$10,000,000 vacation Showcase.

## Church League

North Redondo	11 9 11 5-26
Rolling Hills	8 7 6 10-29
High Scorers: North Redondo	13 14 13 14-52
Raynel	Gary Littlejohn (11)
Bunch (9)	
Rolling Hills Covenant	John Baptist
First Lutheran	13 14 13 14-52
High Scorers: Redondo First Baptist	Dick Hills (7)
Resurrection Luth.	9 16 7 6-42
Assembly of God	10 14 13 14-52
High Scorers: Resurrection Luth.	Tom Tapp (10)
Resurrection Lutheran	Ron Merrill (16)

## Amble Basketball

City Slickers def. Pampling Five 16-10; 4-15; 17-14. Vanderhill Boys def. Strive Five forfeit. South Torrance Lions def. Rat. (11-6; 12-3; 4-13; 11-6). Ratpacas def. Lakers for forfeit.

# Long Beach Favored in Metro Race

Even in the face of improved junior college basketball competition in California, all indications are that this is a vintage year for the Metropolitan Conference.

Three games Friday are Santa Monica at Cerritos, East Los Angeles at El Camino, and Valley at Bakersfield. On Saturday, Bakersfield is host to Long Beach. Metropolitan Conference teams turned in a smashing performance in pre-season contests.

The league dominated the Sam Berry Tournament Long Beach beat Valley, 95-93, for the title. El Camino defeated East Los Angeles, 90-85, in the consolation finals. In the same week Bakersfield won the San Bernardino tournament by beating the host team, 80-64.

Long Beach finished with a 16-0 mark and El Camino lost only one game for a 14-1 record. Not counting alumni games, Metropolitan Conference teams finished with an overall 74-28 non-conference mark. Team-by-team breakdown: Long Beach (16-0), El Camino (14-1), Valley (12-3), East Los Angeles (9-5), Bakersfield (11-6), Serritos (8-6), and Santa Monica (4-7).

All Metro coaches agree this figure to be the toughest conference race in the history of the conference. Long Beach, coached by Charles Kane, is a powerhouse. Paced by guard Bernie Richard, the Vikings topped previously undefeated Riverside in the Barry Tournament. The Vikes have height, good shooting, and rebounding and are reinforced by the return of Mel Reed (6-6) who broke a bone in the alumni game.

Dan Means' Valley five is sparked by Arizona State transfer Charley Robinson (6-7), forward Cary Smith (leading average), and guard Steve Jennings (top scorer). Means, in his first year at the helm, rates the Monarchs stronger defensively this season.

The Warriors, who lost only to Compton (Western State Conference favorite), have six first line players in forwards Steve Wright, Jim Lloyd, and Ed Palmquist; center Alan Lepper; and guards Bob Brennan and Bob Osbrink.

Bakersfield, coached by Bill Bishop, has speed (Ben Olson) and rebounding (high jumper Willie Nutt and Lyman York, 6-5). Cerritos, which ran wild in the conference last year and easily won the crown, has not

jelled this year. Coach James Killingsworth said "We're adequate offensively and we need improving defensively and on the boards." Top scorer on the Falcon five is forward Rich Brown.

East Los Angeles lost heavily through ineptibility, but coach Dave Taylor still has better material to work with this season. The speed of last year is gone, but the team is getting more shots and is rebounding better.

At Santa Monica the story is lack of height. Coach Tom McGarvin's starting center is only 6-3 and though the Corsairs shoot better than average they will be in tough every Metro contest.

## LUNCHEON MEETING

The South Bay Athletic Club will meet at the Plush House at 12:15 p.m. Friday. The first meeting of the new year will feature basketball and golf.