

Pleasant Shopping With Friendly People • Pleasant Shopping With Friendly People • Pleasant Shopping With Friendly People

Make sure it's a Foods Co. Ham or Turkey If You Want

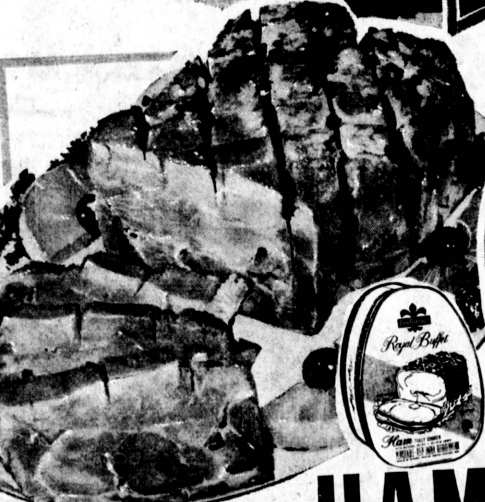


THE FINEST HOLIDAY DINNER



TURKEYS

JR. TURKEYS 4 to 8 lb. Avg. **45c** lb.
DUCKLINGS PLUMP TENDER **39c** lb.



USDA INSPECTED YOUNG - TENDER NORBEST PLUMP - ROAST-RITE BROAD-BREADED **TOMS** 16 to 20 lb. Avg. **33**
HEN TURKEYS 8-12 lb. Avg. **37c**

FRESH TURKEYS WE HAVE A COMPLETE SELECTION OF FRESH HEN & TOM TURKEYS - ALL SIZES. GROWN IN APPLE VALLEY. DELIVERED FRESH DAILY CALIFORNIA GROWN
PLUMP CANADIAN GEESE 8 to 12 LB. AVG. **79c** lb.

DUBUQUE **HAM** 7 LB. CAN \$ **5.99**
4 POUND CAN **\$3.79**
GOLDEN CREME SOUR CREAM PINT CARTON **47c**
BORDEN'S CREAM CHEESE 8-OZ. PKG. **33c**
HALF PINT **25c**
FISHER'S SNAK PACK Assorted Process Cheese 6-oz. pkg. **33c**
Pen & Quill PARTY DIPS All Flavors 8-oz. cup **33c**

LUER or FARMER JOHN FULLY COOKED **HAMS** SHANK HALF HAM CENTER SLICES INCLUDED **55c** lb.
PRE-CARVED AND TIED BUTT PORTIONS FULLY COOKED **69c** lb.
WHOLE HAMS FULLY COOKED 12-16 LB. AVG. **67c** lb.
HAM SLICES CENTER CUT **\$1.19** lb.



FRESH • 4 to 6 Lbs. **ROASTING CHICKENS** **49c** lb.
CALIFORNIA GROWN LANCASTER FARMS

USDA CHOICE **STANDING RIB ROAST** 4th, 5th & 6th Ribs **79c** lb.
USDA CHOICE BONELESS ROLLED ROASTS: SIRLOIN TIP, BOTTOM ROUND, SHOULDER CLOD or CROSS RIB. Your Choice **89c** lb.
BEEF CLUB RIB ROAST 1st, 2nd & 3rd Ribs **99c** lb.

BONELESS TURKEY ROASTS IDEAL FOR SMALL FAMILIES COSMOPOLITAN TURKEY ROAST 3-5 lb. SIZE. ROLLED BONELESS **89c** lb.
PAN SIZE TURKEY ROAST All White Meat **2 1/2 LB. \$3.29** Light & Dark Meat **2 1/2 LB. \$2.79**
TURKEY ROAST WITH GRAVY 4-POUND ROAST **\$3.89**

USDA CHOICE FRESH SEMI-BONELESS **LEG O' LAMB** **79c** lb.
Luer's 1st Quality Sliced **BACON** 1-LB. PKG. **79c**

ARMOUR STAR STUFFED TURKEYS **69c** lb.
STUFFING NEEDS: FRESH WESTERN OYSTERS Pint Jar **79c**, RATH BLACKHAWK PORK SAUSAGE 1-lb. roll **49c**



TURN PAGE FOR 2 MORE BIG PAGES OF HOLIDAY FOOD VALUES