



M-M-M-M
Chicken



USDA INSPECTED FRESH
FRYERS
CUT UP

SPLIT or
QUARTERED

28^c lb.

4 LEGGERS
FRYERS

4 LEGS
FAMILY
PAK **39**^c lb.

2 BREASTED
FRYERS

2 BREASTS
FAMILY
PAK **39**^c lb.

BEST OF THE FRYERS
NO NECKS • NO BACKS
NO GIBLETS

45^c lb.



SLICED BACON

WILSON'S CORN KING 1-LB. **69**^c PKG.
DUBUQUE MISSISSIPPI



FARMER JOHN, LUER'S 1-LB. **79**^c or HOFFMAN'S PKG. FIRST QUALITY

FRESH • CUT

CHICKEN PARTS

"BUY ONLY THE PARTS YOU LIKE!"



WHOLE LEGS

LEG & THIGH

39^c lb.

BREASTS

45^c lb.

DRUMSTICKS 55^c lb.
GIZZARDS 29^c lb.
WINGS & HEARTS 29^c lb.
BACKS & NECKS 9^c lb.
LIVERS 49^c lb.

STILL AVAILABLE!
ALL 20 VOLUMES

GOOD HOUSEKEEPING
COOK BOOKS
COMPLETE YOUR SET

39^c ea.

HANDY PROTECTING LOOSE LEAF BINDER

HOLDS ALL 20 VOLUMES **79**^c

QUALITY FOODS

FOR GOURMET TASTES

PREPARED IN SWITZERLAND

SWISS KNIGHT FONOUÉ

A DELICIOUS CHEESE DISH IN THE TRUE SWISS STYLE

14-OZ. PKG.



\$1.49



HONORABLE • 1915 VINTAGE
50 YEAR OLD BURGUNDY

IMPORTED FROM SPAIN. LIMITED QUANTITY

\$2.98



USDA CHOICE

TRIMMED RIGHT FOR MORE EATING PLEASURE

BONELESS **SWISS STEAK**
BONELESS **Family STEAK**
BONELESS • LEAN **STEW BEEF**

STEER BEEF

79^c lb.

BONELESS **RUMP ROAST**

BONELESS **Sirloin Tip ROAST**

BONELESS **Bottom Round ROAST**

BONELESS **SHOULDER CLOD**

89^c lb.

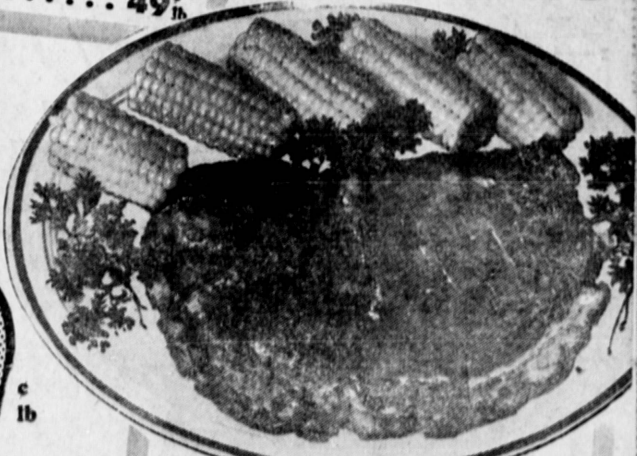
LEAN FRESH GROUND BEEF

FAMILY PAK

39^c lb.

FRESH **MEAT LOAF MIX**

VEAL PORK BEEF **49**^c lb.



BONELESS ROUND STEAK

FULL CUT

79^c lb.

7 SALE DAYS

THURSDAY thru WEDNESDAY
NOVEMBER 11 THRU NOVEMBER 17

2 MORE PAGES
OUTSTANDING
FOOD VALUES

