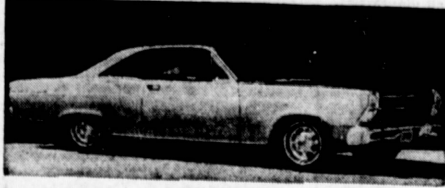




# DICK WILSON FORD MUSTANG HEADQUARTERS



## STILL YOUR OFFICIAL FORD MUSTANG HEADQUARTERS



1966 FAIRLANE '500'



1966 FORD GALAXIE '500'



1966 FALCON



1966 THUNDERBIRD

**BRAND NEW 1965 FORD GALAXIE 500**  
 Cruisomatic transmission, radio and heater, white sidewall tires, deluxe cloth and vinyl interior, back-up lights and clock.  
**FULL PRICE \$2388**  
 36 MOS. \$52.65 AT \$52.00

**BRAND NEW 1965 FALCON**  
 Heater, whitewall tires, 24 months or 24,000-mile guarantee.  
**FULL PRICE \$1788**  
 36 MOS. \$39.88 AT \$39.00

**BRAND NEW 1965 FORD LTD. HDTOP.**  
 Quieter than a Rolls Royce, T-Bird engine, cruisomatic, power steering, radio and heater, tinted glass, padded dash, seat belts, whitewall tires. Stk. 1039  
**36 MOS. \$62.69 AT**

DUE TO THE TREMENDOUS ACCEPTANCE OF THE '66 FORD LINE WE ARE OVERSTOCKED WITH GOOD "A-1" USED CARS

\$1895	1964 CHEVROLET CONVERT. V8, automatic transmission, Stock No. 1158	\$4992	1960 FORD GALAXIE 2-Dr. Sedan, V-8, auto. trans., power steering radio & heater. Air conditioned. Stk. 1226	\$595	1960 FORD GALAXIE 2-DOOR Stk shift, radio & heater. Stk. 603	\$2250	1961 FALCON 4-DOOR Stk Shift, heater. Stk. 829
\$1195	1962 FORD SQUIRE WAGON Wood paneling, automatic, radio and heat. Stock #1222	\$3940	1961 COMET DELUXE Radio and heater. Stk. 865	\$295	1961 FALCON STA. WAGON Radio and heater. Stk. 1085	\$1500	1959 CHEVROLET SEDAN Radio and heater. Stk. 1161
\$1495	1963 FORD GALAXIE XL HARDTOP, V8, automatic, power steering, radio & heater. #1287	\$3720	1961 FORD GALAXIE CONV. Auto. trans., radio & heater. Stk. 1289	\$395	1959 PLYMOUTH STATION WGN. Suburban. Automatic, power steering, radio & heater. ITB 026.	\$1750	'61 FORD GALAXIE STARLINER V-8, radio & heater. Stk. shift.
\$995	1960 T-BIRD CONVERTIBLE Power windows, seat, steering, brakes, radio and heater. #1370	\$3312	1962 THUNDERBIRD Full power, Air conditioning. Stk. 1352	\$495	1959 PLYMOUTH SPORT COUPE Fury, V-8, automatic, power steering, radio & heater	\$2200	
\$495	1959 MERCURY HARDTOP COUPE Parklane, V-8, power steering, power windows, radio & heater. R-1283.	\$2000		\$395		\$2000	
\$195	1957 FORD HARDTOP COUPE V-8, automatic, power steering, radio & heater. RAH 342.	\$1500		\$495		\$1700	
\$395	1959 PLYMOUTH STATION WGN. Suburban. Automatic, power steering, radio & heater. ITB 026.	\$1750		\$645		\$2000	
\$345	1958 RAMBLER WAGON Auto. trans., radio & heater. Stk. 1252	\$1600		\$495		\$2400	
\$1795	1962 THUNDERBIRD Full power, Air conditioning. Stk. 1352	\$4600					

**WIN... FABULOUS PRIZES!**  
 Register for an opportunity to win one of the 5,715 prizes in the National "Win a '66 Ford Contest."  
 • 1 Thunderbird Town Landau—stereo-equipped  
 • 2 Galaxie 500 7-Lite 2-Door Hardtops—stereo-equipped  
 • 3 Fairlane 500 2-Door Hardtops  
 • 3 Mustang Hardtops—stereo-equipped  
 • 3 Falcon Wagons or Econoline Vans with Camper Conversions  
 • 3 Bronco Roadsters  
 • 100 Philco 16-in. Portable TV's  
 • 200 Canning Ware Buffet Sets  
 • 500 Hamilton Beach Electric Carving Knives  
 • 1,000 Kodak Instamatic 104/ Camera Outfits  
 • 3,900 Mustang Model Radios by Philco

**DOWN PAYMENT A PROBLEM?**  
 Let us help you to make your down payment and lower your monthly payments by consolidating your present obligations. In many cases you can buy a new car with NO CASH out of pocket.

**BRAND NEW 1966 FORD TRUCKS**  
 F100's—F250's ECONOLINES  
 READY FOR IMMEDIATE DELIVERY

**730** SO. PACIFIC COAST HWY. (6 Bks. South of Torrance Blvd.) FR 6-8793  
**REDONDO BEACH**  
**234** SO. PACIFIC COAST HWY. (1/2 Bk. North of Torrance Blvd.) FR 6-8793

No Matter What  
 You're Selling...  
 A House  
 A Car or  
 Kangaroo  
**TORRANCE**  
**PRESS-HERALD**  
 \* \* \*  
**WILMINGTON**  
**PRESS-JOURNAL**  
 CLASSIFIED ADS  
 WILL BRING RESULTS

# CARL'S

LOW OVERHEAD GIVES BEST DEAL AT  
**CHRYSLER - PLYMOUTH - VALIANT - IMPERIAL**  
 1200 N. AVALON BLVD., WILMINGTON TE 5-3131  
**SELLING '66's AT '65 PRICES**

USED CARS		1965 CLEAN-UP SALE			USED CARS	
1960 PLYMOUTH FURY 4-DOOR SEDAN V-8, automatic, radio, heater, power steering, 1 owner. HXS 609. <b>\$599</b>	1960 FORD WAGON 4-DOOR 6-PASSENGER Country Sedan V-8 automatic. Radio and heater. Power steering and brakes. White walls, tinted glass. #D584 <b>\$17 MO.</b>	EXECUTIVE CAR 1965 VALIANT V8 Fully factory equipped. #P5887. <b>\$1799</b>	EXECUTIVE CAR 1965 PLYMOUTH SPORT FURY V-8, automatic, air conditioning, loaded. Stock #140. Factory Invoice \$4299.55 <b>\$3499</b>	EXECUTIVE CAR 1965 PLYMOUTH BELVEDERE II HARDTOP Coupe, V-8, automatic, power steering & brakes, whitewalls, etc. #103. CARL'S PRICE <b>\$2599</b>	1963 CHEVROLET SUPER SPORT HARDTOP Impala V8. Automatic, radio, heater, power steering and brakes, bucket seats, console. NMZ 455. <b>\$1599</b>	1963 FORD FAIRLANE '500" 4-Door, V-8, automatic, radio, heater, power steering, air conditioning. 1XM 385. <b>\$1599</b>
1961 CHEVY MONZA 6 CYLINDER 4-speed stick, factory equipment. QHG 799. <b>\$699</b>	1960 VALIANT 6 cylinder, automatic, radio, heater. QHP 228. <b>\$17 MO.</b>	1965 PLYMOUTH FURY II 2-DOOR Fully equipped. Stock #437. Factory Invoice \$2739.04 CARL'S PRICE <b>\$2199</b>	1965 VALIANT V-8 2-DOOR Factory equipped. #148. Factory Invoice \$2404.70 CARL'S PRICE <b>\$2099</b>	EXECUTIVE CAR 1965 PLYMOUTH BELVEDERE 4-DOOR V8, automatic, radio and heater, whitewalls. #P5711. Factory Invoice \$2721 CARL'S PRICE <b>\$2499</b>	1960 MERCURY 2-DOOR HARDTOP Montclair Coupe, V-8, automatic, power steering and brakes, radio, heater, etc. QTN 886. <b>\$19 MO.</b>	1960 BUICK INVICTA V8 Automatic, radio, heater, power steering and brakes, whitewalls. 1TE 080. <b>\$20 MO.</b>
1962 PLYMOUTH FURY 4-DOOR HARDTOP V-8, Automatic, Power steering. White walls. OAC 323. <b>\$21 MO.</b>	1964 CHEVROLET IMPALA SUPER SPORT Hardtop Coupe, V-8, automatic, radio, heater, power steering and brakes. White walls. QPS 592. <b>\$2099</b>	EXECUTIVE CAR 1965 PLYMOUTH VALIANT V-100 V8, automatic, fully equipped. #P5883. Factory Invoice \$2541.90 CARL'S PRICE <b>\$1949</b>	1965 BARRACUDA V-8 FASTBACK Factory equipped. #413. Factory Invoice \$2983.55 CARL'S PRICE <b>\$2549</b>	BRAND NEW 1965 BARRACUDA Fastback V8, automatic, power steering, padded dash, wheel covers. Stock #300. <b>\$2699</b>	1958 CHEVROLET STATION WAGON Radio, heater, automatic. Good transportation. HXG 300. <b>\$9 MO.</b>	1957 IMPERIAL LE BARON 2-DOOR V8, automatic, radio, heater, power steering and brakes, air conditioning. <b>\$11 MO.</b>
1958 FORD STATION WAGON V-8, standard shift, radio & heater. Q15 389. <b>\$149</b>	1961 CHRYSLER NEW YORKER Automatic, power steering and brakes. Radio & heater. White walls. QVK 258. <b>\$39 MO.</b>	1966 IMPERIAL CROWN HARDTOP Fully factory equipped. <b>\$4799</b> Delivered in Wilmington Order Yours Today	1966 CHRYSLER NEW YORKER HARDTOP 4-Door, Fully factory equipped. <b>\$3699</b> Delivered in Wilmington Order Yours Today	1966 VALIANT V-100 4-DOOR Fully factory equipped. <b>\$1899</b> Delivered in Wilmington Order Yours Today	1961 OLDS F-85 4-DOOR SEDAN V-8, automatic, radio, heater, power steering, whitewalls. HXU 720. <b>\$799</b>	<b>PICKUPS</b> 1950 - 1958 ALL PRICED TO SELL NOW!

**Your Classified Ad In 2 Newspapers For One Low Price!**

**Your Classified Ad In 2 Newspapers For One Low Price!**  
 PRESS-HERALD  
 PRESS JOURNAL and HARBOR MAIL