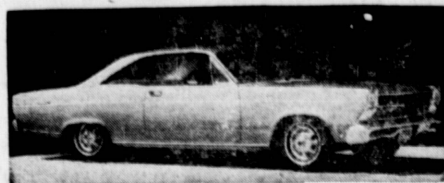


● Automotive AUTOMOBILES For Sale 190 ● Automotive AUTOMOBILES For Sale 190 ● Automotive AUTOMOBILES For Sale 190 ● Automotive AUTOMOBILES For Sale 190 ● Automotive AUTOMOBILES For Sale 190 ● Automotive AUTOMOBILES For Sale 190 ● Automotive AUTOMOBILES For Sale 190

THE ALL NEW 1966 FORDS ARE HERE!



1966 FAIRLANE '500'

NEW STYLING



1966 FORD GALAXIE '500'

NEW ELEGANCE



1966 FALCON

UNBELIEVABLY BEAUTIFUL



1966 MUSTANG

NEW MODELS



1966 THUNDERBIRD

NEW FEATURES

WHILE THEY LAST — SENSATIONAL SAVINGS ON 1965 FORDS

SAVE \$913

BRAND NEW 1965 FORD LTD. HARDTOP

T-Bird engine, Cruisomatic, power steering, radio, heater, tinted glass, padded dash, seat belts, whitewalls.

\$62⁶⁹ MO. for 36 MOS.

BRAND NEW 1965

FORD GALAXIE '500' **\$2388**

Cruisomatic, radio, heater, whitewalls, deluxe cloth and vinyl trim, backup lights, clock.

\$52⁶⁵ MO. for 36 MOS.

BRAND NEW 1965

FALCON 2-DOOR **\$1788**

Heater, whitewalls, fully equipped. 24 months or 24,000 mile guarantee.

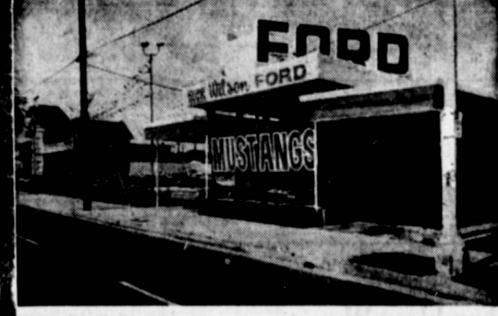
\$39⁸⁸ MO. for 36 MOS.

NEW CAR TRADE-IN BARGAINS

FULL PRICE	DESCRIPTION	PYMTS.
\$3295	1963 LINCOLN CONTINENTAL. P/steering, p/brakes, p/windows, p/seat, air conditioning, leather int. A beauty.	\$78 ⁸⁸ mo.
\$4295	1964 LINCOLN CONTINENTAL CONV. Full power, AM-FM radio, speed control, custom trim, air cond., all leather.	\$99 ⁸⁸ mo.
\$3295	1964 THUNDERBIRD HARDTOP. Auto, p/steering, p/brakes, air conditioning. Light blue and clean.	\$78 ⁸⁸ mo.
\$295	1960 FALCON SEDAN. Stick shift.	\$15 ⁰⁰ mo.
\$295	1959 CHEVROLET SEDAN. Automatic, radio.	\$15 ⁰⁰ mo.
\$495	1961 FALCON. Stick shift.	\$17 ⁰⁰ mo.
\$495	1960 FORD CONVERTIBLE. V-8, automatic, radio, heater.	\$17 ⁰⁰ mo.
\$895	1961 FORD 1/2 TON PICKUP TRUCK. Long bed, styleside, overdrive.	\$28 ⁶⁰ mo.
\$895	1962 MERCURY COMET WAGON. Radio and heater.	\$28 ⁶⁰ mo.
\$495	1961 FALCON STATION WAGON. Radio and heater.	\$17 ⁰⁰ mo.
\$695	1961 FORD STARLINER. V-8, radio and heater, stick shift.	\$22 ¹⁰ mo.
\$595	1962 DODGE. V-8, automatic transmission.	\$19 ²⁵ mo.



DICK WILSON FORD MUSTANG HEADQUARTERS



730

SO. PACIFIC COAST HWY. (6 Blks. South of Torrance Blvd.) FR 6-8793

REDONDO BEACH

234

SO. PACIFIC COAST HWY. (1/2 Blk. North of Torrance Blvd.) FR 6-8793

5 ACRES OF CARS — AMPLE FREE PARKING



KOTT & SMOLAR FORD
336 W. ANAHEIM, WILMINGTON TE 5-6621

No Matter What You're Selling...
A House
A Car or Kangaroo
TORRANCE PRESS-HERALD
WILMINGTON PRESS-JOURNAL
CLASSIFIED ADS WILL BRING RESULTS

CARL'S

LOW OVERHEAD GIVES BEST DEAL AT CHRYSLER - PLYMOUTH - VALIANT - IMPERIAL
1200 N. AVALON BLVD., WILMINGTON TE 5-3131
'65 CLEAN-UP SALE!
ENTIRE STOCK MUST BE REDUCED

USED CARS		★ BRAND NEW 1965's ★		USED CARS	
1962 MERCURY 2-DR. HARDTOP. 5-55 V-8 automatic. Radio, heater, power steering and brakes. White walls, Air conditioning. NVZ 154.	\$1299	EXECUTIVE CAR 1965 VALIANT V8. Automatic, factory equipped. #P5887.	\$1799	1962 PLYMOUTH BELVEDERE II HARDTOP HKU 157. 4-door, 6 pass. V-8. Automatic, radio and heater. Power steering & brakes. White walls. Lower steering, whitewalls.	\$1129
1960 FORD WAGON 4-DOOR 6 PASSENGER. Country Sedan V-8 automatic. Radio and heater. Power steering and brakes. White walls, tinted glass. #D5854	\$17 MO.	EXECUTIVE CAR 1965 PLYMOUTH SPORT FURY. V-8, automatic, air conditioning, loaded. Stock #140. Factory Invoice \$4299.35	\$3499	1958 CADILLAC 4-DOOR HARDTOP. V-8. Automatic. Radio and heater. Power steering and brakes. White walls. P&X 534	\$15 MO.
1961 CHEVY MONZA 4 CYLINDER. 4-speed stick, factory equipment.	\$19 MO.	1965 PLYMOUTH VALIANT V-100. Fully equipped. Stock #437. Factory Invoice \$2739.04	\$2299	1960 BUICK INVICTA V8. Automatic, radio, heater, power steering and brakes. White walls, ITE 080.	\$20 MO.
1960 VALIANT 6 cylinder, automatic, radio, heater. QHP 228.	\$17 MO.	EXECUTIVE CAR 1965 PLYMOUTH VALIANT V-100. V-8, automatic, fully equipped. #P5883. Factory Invoice \$2541.90	\$2049	1957 IMPERIAL LE BARON 2-DOOR. V-8, automatic, radio, heater, power steering and brakes, air conditioning.	\$11 MO.
1962 PLYMOUTH FURY 4-DOOR HARDTOP. V-8. Automatic. Power steering. White walls. OAC 323.	\$999	EXECUTIVE CAR 1965 PLYMOUTH BELVEDERE II 4-DOOR. Automatic, radio, power steering and brakes, white walls, etc. #143. Factory Invoice \$3023.40	\$2599	1959 BUICK STATION WAGON. Invicta. Radio, heater, power steering and brakes, automatic. Nice car.	\$14 MO.
1962 RENAULT DAUPH. 4 DOOR. 4 Cyl. 3 speed. Heater. GVS 257	\$11 MO.	1965 BARRACUDA V-8 FASTBACK. Factory equipped. #2413. Factory Invoice \$2983.55	\$2549	1950 - 1958 ALL PRICED TO SELL NOW!	
1962 STUDEBAKER GT 2-DR. HARDTOP. 4 speed, V-8, radio, heater, whitewalls. HZG 955.	\$29 MO.	1965 PLYMOUTH FURY III HARDTOP. 4-Door. 383 engine, power steering & brakes, full factory equipment. #198.	\$2949		
1961 CHRYSLER NEW YORKER. Automatic, power steering and brakes. Radio & heater. White walls. QVK 258.	\$39 MO.	EXECUTIVE CAR 1965 PLYMOUTH BELVEDERE II 4-DOOR. Automatic, radio, power steering and brakes, white walls, etc. #143. Factory Invoice \$2983.55	\$2599		

DON'T LIKE THE COLOR? We'll Paint It!
VOLKSWAGEN
Buy From An Authorized Dealer
KENDON MOTORS
Authorized VW Dealer
1241 PACIFIC COAST HWY. AT NORMANDIE LOMITA DA 6-7231

HESTER'S USED CARS
CORNER NORMANDIE & LOMITA BLVD. Harbor City - 325-9262

Press-Herald Automobile Dealers Have the Car That You Desire. Shop These Pages!

Your Classified Ad In 2 Newspapers For One Low Price! PRESS-HERALD PRESS JOURNAL and HARBOR MAIL