

Assessor Opens Lomita Office

A new regional office of the Assessor's Department has been opened at 2049 Pacific Coast Hwy., Lomita. County Assessor Phil Watson has announced.

The office will serve Region 14 of the Assessor's Department including the communities of Catalina, Dominguez, Harbor City, Lomita, Falos Verdes Estates, Redondo Beach, Rolling Hills, Torrance, San Pedro and Wilmington.

Heading the office will be Herb Evans, principal appraiser in charge of Region 14. Office hours are 8 to 5, Monday through Friday, phone 325-9500.

The region is bounded roughly, by 190th Street on the north, Long Beach Boulevard on the east, and the Pacific Ocean on the south and west.

Under Assessor Watson's regional office program begun in 1963, the county is divided into 15 assessment regions, each directed by a principal appraiser from the Real Estate Division of the Department. In addition to serving the public, the regional offices are staff quarters of the appraisal crews assigned to each region.

Copies of the preliminary assessment roll for the region, real estate transfer journals, maps and other records will be available in the office for use of taxpayers of the area.



COURTESY MORTGAGE INVESTMENT COMPANY

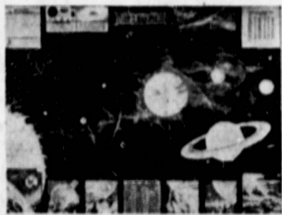
NEW HIGH RATE

Now—with 5% to grow on—a Southwest Savings account is a sounder, more profitable investment than ever before. Consider these other advantages:—20 years of operation in the Southbay area under the same responsible management...assets in excess of \$100,000,000...savings insured to \$10,000 by an agency of the U.S. Government...withdrawals have always been paid on request with never a service charge. So, you can see it pays to move slow-moving dollars to Southwest Savings. Open your account soon...in person or by mail. Postage prepaid both ways. Funds received or postmarked by October 11th earn from the 1st.

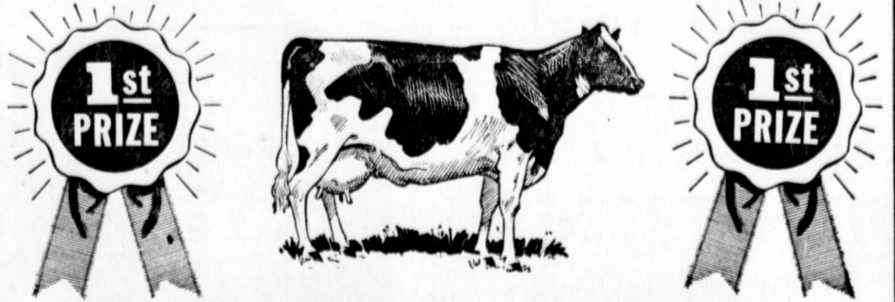
FREE MAP OF OUTER SPACE

Magnificently full-colored representation of man's newest frontier. Includes large spread of distances plus special distance chart, interplanetary weight chart, space ship time schedule and other vital data. Perfect for wall mounting.42" x 33". Limited supply.

October 1st thru 11th.



INGLEWOOD: (main office) 2700 W. Manchester (at 6th Ave.) PL. 3-2164
 TORRANCE: 1603 Cravens (at Marcelina) FA. 8-6111
 mon. thru thurs. 9:30 am to 4 pm; fri. to 6 pm.



ROSEBUD DAIRY A GOLD MEDAL WINNER AT 1965 L.A. COUNTY FAIR AT POMONA

YOU CAN WHIP OUR CREAM—BUT YOU CAN'T "BEAT" OUR MILK

OPEN DAILY 7 A.M. 'TIL 9 P.M.

SAVE ON

MILK

21½¢ QT.

*When bought in handy, economical 6 and 10 Quart Dispensers. No Bottles—Takes Less Refrigerator Space

EVERY-DAY LOW PRICES ON MILK

YOUR CHOICE OF GLASS OR PLASTIC

43¢ ½ GAL. 22¢ QT.



COMPARE OUR EVERY DAY LOW, LOW PRICES!

COTTAGE CHEESE

Pt. 25¢ Qt. 49¢

PINEAPPLE or CHIVE Pt. 27¢



WE FEATURE BROOKDALE ICE CREAM ANOTHER GOLD MEDAL WINNER

SOUR CREAM, . . . ½ pt. 25c pt. 50c
 YOGURT ½ pt. 21c qt. 47c
 BUTTERMILK . . . qt. 15c ½ gal. 30c
 NON-FAT MILK qt. 14½c ½ gal. 28c
 GOAT MILK qt. 50c



TRY OUR CHOCOLATE DRINK IT'S DELICIOUS—HOT OR COLD!

FRUIT PUNCH 5 DELICIOUS FLAVORS

FRUIT — WILD CHERRY — ORANGEADE LEMONADE AND GRAPEADE

½ Gal. 25¢

SPECIAL PRICES FOR WEDDINGS, CHURCHES, SCHOOLS, PARTIES, ETC.



ROSEBUD DAIRY

182nd & Crenshaw, Torrance

(JUST NORTH OF SAN DIEGO FREEWAY)

Phone DA 3-3225

FRESHNESS IS NOT OUR ATTITUDE, IT'S OUR BUSINESS