



# LOWER THAN DISCOUNT PRICES

... and BETTER FOOD Gives You BLUE CHIP STAMPS ... and Neighborly Service, too!

PURE CALIFORNIA  
**ORANGE JUICE**

Cal-Fame FROZEN  
6-oz can  
Each can makes 24 oz.  
**15<sup>c</sup>**



S & F  
**COFFEE**  
Regular or Drip Grind  
1-lb. can  
Save 14c  
**49<sup>c</sup>**

Kraft's Philadelphia  
**CREAM CHEESE**

3-oz. pkg.  
**10<sup>c</sup>**

SWANSON'S FROZEN  
**TV DINNER**

Your Choice - - -  
All Regular 11 oz. Dinners  
SAVE 20c



**45<sup>c</sup>**

FACIAL  
**TISSUE**

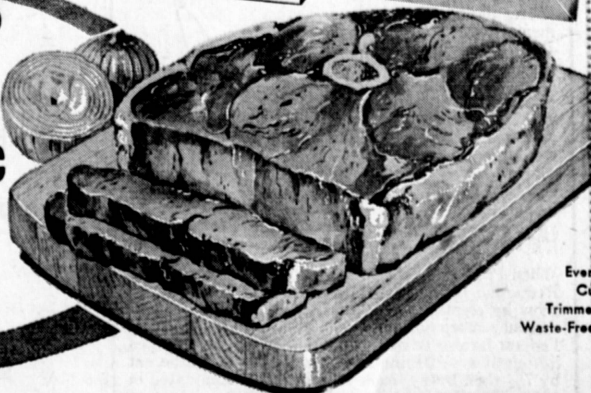
Springfield Pastel Colors  
Box of 400 Sheets  
**15<sup>c</sup>**

**POTATO CHIPS**

Better Food's own Crisp, Fresh  
LARGE 10-oz. Bag  
Reg. 59c  
**39<sup>c</sup>**

ROUND  
**STEAK**

U.S.D.A. "CHOICE" or Table Pride Beef  
Bone In  
lb.  
**67<sup>c</sup>**



Every Cut Trimmed Waste-Free

HERFORD CORNED  
**BEEF**

SAVE 10c

12-oz. Can  
**39<sup>c</sup>**

**MIRACLE WHIP**  
Salad Dressing  
Full Quart  
**49<sup>c</sup>**



Boneless Steak  
SIRLOIN TIP lb. **98<sup>c</sup>**  
Boneless ROUND STEAK lb. **79<sup>c</sup>**

Cube Steak, lb. **98c**  
Boneless Steak TOP ROUND lb. **89<sup>c</sup>**

Bone In RUMP ROAST lb. **69<sup>c</sup>**  
Swift's Premium Sliced Bacon lb. **79<sup>c</sup>**

STOKELY'S FINEST/PURE HAWAIIAN  
**JUICE**

PINEAPPLE

46-oz. Can  
**25<sup>c</sup>**

STOKELY'S FINEST/SUGAR  
**PEAS**

TALL No. 303 CANS

**5 for \$1**

SECRET ROLL ON  
Deodorant 7c Off Large 75c Size  
**49<sup>c</sup>**

Boneless Round or Pike's Peak ROAST lb. **79<sup>c</sup>**

U.S.D.A. "Choice"

Sweet, Hickory Smoked, Tender  
Cooks, Tastes Like Ham  
**Smoked PICNIC** lb. **39<sup>c</sup>**

VAN CAMP/DARK RED KIDNEY  
**BEANS**

TALL No. 300 CANS

**10<sup>c</sup>**

MILKMAN/DRY POWDERED  
**MILK**

MAKES SIX QUARTS

Large Pkg. **89<sup>c</sup>**

PRELL LIQUID SHAMPOO  
Reg. 60c Bottle  
**49<sup>c</sup>**

LAMB SHOULDER ROAST

Swift's Premium or U.S.D.A. "Choice"  
lb. **39<sup>c</sup>**



Round Bone LAMB CHOPS lb. **79<sup>c</sup>**  
Shoulder LAMB CHOPS lb. **59<sup>c</sup>**  
Flavorful, Economical LAMB BREAST lb. **19<sup>c</sup>**

Fresh, Small Size, Lean Pork  
**SPARERIBS** lb. **59<sup>c</sup>**

VALUABLE COUPON WITH THIS COUPON  
**10<sup>c</sup> OFF**  
ON YOUR PURCHASE OF ANY TROPICAL PRESERVES or FRUIT JELLIES  
12-oz. Jars, Your Choice of Flavors  
THIS COUPON GOOD ONLY AT YOUR BETTER FOOD MARKET  
Adults Only, Please—Good Sept. 23-29, 1965



Swift'ning Pure Shortening  
3-lb. Can  
SAVE 18c  
**59<sup>c</sup>**

**EARLY TIMES**

KENTUCKY STRAIGHT BOURBON WHISKEY

86 Proof SAVE NOW!  
Price Increases October 1st  
Full Half-Gallon

**10<sup>95</sup>**



Case of 24, 2.49 — Plus Tax, Deposit  
ALPINE BEER Full 12-oz. Bottles **6 for 69c**  
Chateau de Vail / Sparkling Brandy, Pink Champagne  
CHAMPAGNE Fine California Sparkling Wines Fifth **\$1.99**

Van de Kamp's **GOLDEN ANNIVERSARY**  
SPECIAL  
\* THURS. SUN., SEPT. 23-26 \*

**ALL COOKIES ON SPECIAL**

CAMPBELL'S SOUPS  
Vegetable Base Varieties 10 1/2-oz. Cans **79<sup>c</sup>**  
Meat Varieties 10 1/2-oz. Cans **97<sup>c</sup>**

PETER PAN/PURE, FRESH  
**PEANUT BUTTER** Large 18-oz. Jar **59<sup>c</sup>**

IMPERIAL/FINE FLAVOR  
**MARGARINE** 1-lb. Ctn. **3<sup>95</sup>**

TREESWEET/Regular or Pink  
**LEMONADE** Frozen 6-oz. Can **12<sup>95</sup>**

GEBHART'S  
**TAMALES** Tall Can **4<sup>95</sup>**

PLAIN or IODIZED  
**MORTONS SALT** 26-oz. Ctn. **2<sup>25</sup>**

LADY BETTY/Pure, Sweet  
**PRUNE JUICE** Full Quart **39<sup>c</sup>**

**LONG GRAIN RICE**  
Dragon Brand Enriched Premium  
SAVE 8c  
2-lb. Bag **25<sup>c</sup>**



U.S. No. 1 WHITE ROSE  
**POTATOES**  
10-lb. cello bag  
**39<sup>c</sup>**

Swift's Margarine  
**ALLSWEET** c Off Label 1-lb. ctn.  
**25<sup>c</sup>**



**COTTAGE CHEESE**  
Golden Cream/Fresh Gold Award Dairy Products  
Pint Carton **25<sup>c</sup>**  
Full Quart **49<sup>c</sup>**

Swift's PREM  
12-oz. Can **49<sup>c</sup>**

**CHICKEN of the SEA**  
Chunk, Light Meat Tuna We Will Redeem Your 8c Coupon  
No. 1/2 Can **33<sup>c</sup>**

OSCAR MAYER  
**WIENERS**  
ALL MEAT  
Full Pound Package  
**49<sup>c</sup>**

Oscar Mayer/All Meat  
**BOLOGNA** 13-oz. Pkg. **49<sup>c</sup>**  
**SMOKIE LINKS** 12-oz. Pkg. **55c**  
**PILLSBURY COOKIES** Oscar Mayer Asst. Per Pkg. **49c**  
GALILEO SLICED  
**ITALIAN SALAMI** 3-oz. Pkg. **3 for \$1.00**

Washington Jonathan  
**APPLES**  
Extra Fancy! lb. **10<sup>c</sup>**

**GRAPES**  
Flame Red Tokay lb. **10<sup>c</sup>**

**Cucumbers**  
Fresh Long Green Each **5<sup>c</sup>**



**SPECIALS EFFECTIVE 7 DAYS — THURS. SEPT. 23 THRU WED. SEPT. 29**

South Gate 4466 Tweed Blvd. 9 a.m. - 10 p.m. Daily	Carson-Torrance 223rd at Avalon 9 a.m. - 10 p.m. Daily	Los Angeles Western - Slauson 9 a.m. - Midnight	Torrance 5305 Torrance Bl. 9 a.m. - Midnight	Hollywood 4317 Beverly Blvd. 8 a.m. - 2 a.m. Daily
---	---	---	--	---

**THESE MARKETS OPEN 24 HOURS A DAY • 7 DAYS A WEEK**

Los Angeles Western at Santa Barbara	Torrance Prairie at Redondo Beach Bl.	Bellflower Lakewood Blvd. at Alondra	Los Angeles E. Florence at San Pedro	Glendale 130 S. Central at Harvard
---	--	---	---	---------------------------------------