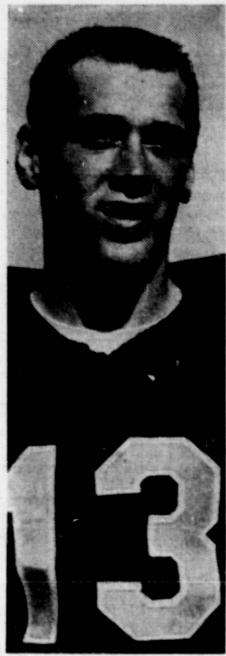


SCRIMMAGE REVEALS

Norman to Run West Varsity

By JERRY REYNOLDS
Press-Herald Staff Writer

West High will throw the football this year. And throwing it will be Ron Norman, a slightly built senior who moves to the varsity team from last year's Bee squad. Norman nailed down the starting assignment Friday evening in an intra-squad scrimmage at West.



RON NORMAN
West Quarterback

New coach Fred Peterson, also promoted from last year's Bee team, took the wraps off the 1965 West High Pioneer League entry, but he held back a few surprises for the Warriors' first encounter next Friday afternoon at Rolling Hills.

What the Warriors will do, though, is obvious: they'll throw. Norman has five targets which Peterson believes are "the best receivers in the league."

Four ends, all seniors, and a halfback will be Norman's main targets. They include Steve Parton, Dave LoRoche, Bruce Ostendorf, and Mark Know, and halfback Joel Hons.

But if West hopes to get an offense moving this year, they are equally determined to put a staunch defense up against opponents.

Veteran varsity lettermen Scott Steele and Len Muellich will get the tackle positions, and guard Alan Coward will figure heavily in the defensive plans of Peterson.

One standout in Friday's scrimmage was soph Dave Boyd, listed as a halfback. Boyd saw duty as a defensive end much of the two-quarter scrimmage and Peterson was plainly pleased with Boyd's work on pass defense.

West still faces a problem of depth, however, that could derail any express from going anywhere.

Peterson can platoon backs and ends, and he may have some flexibility in the line. But the squad is thin.

He is, nevertheless, optimistic about the upcoming campaign.

Harbor Opens Against San Diego

Harbor College will open its 1965 season against San Diego City College Saturday, on its home field.

Yesterday the Hawks, undefeated and ranked second in the nation last year, held a full scale intra-squad scrimmage.

It was learned Monday Ron Barber, Los Angeles City Player of the Year from San Pedro High in 1962, will be ineligible for the up-coming season for not passing the required 10 1/2 units while attending Arizona State U. in 1963.

Bike Riders Prepare for 22nd Program

Pacific Coast motorcycle riders, led by national dirt track champion Sammy Tanner of Long Beach, hit the home stretch of their most successful season in seven years Friday night at Ascot Park.

It's the 22nd program of the 29-week campaign that culminates with the California state championships Nov. 12.

Several eastern riders who have been competing in national championship races at Ascot and Sacramento are expected to be in the field Friday night, according to racing director J. C. Agajanian.

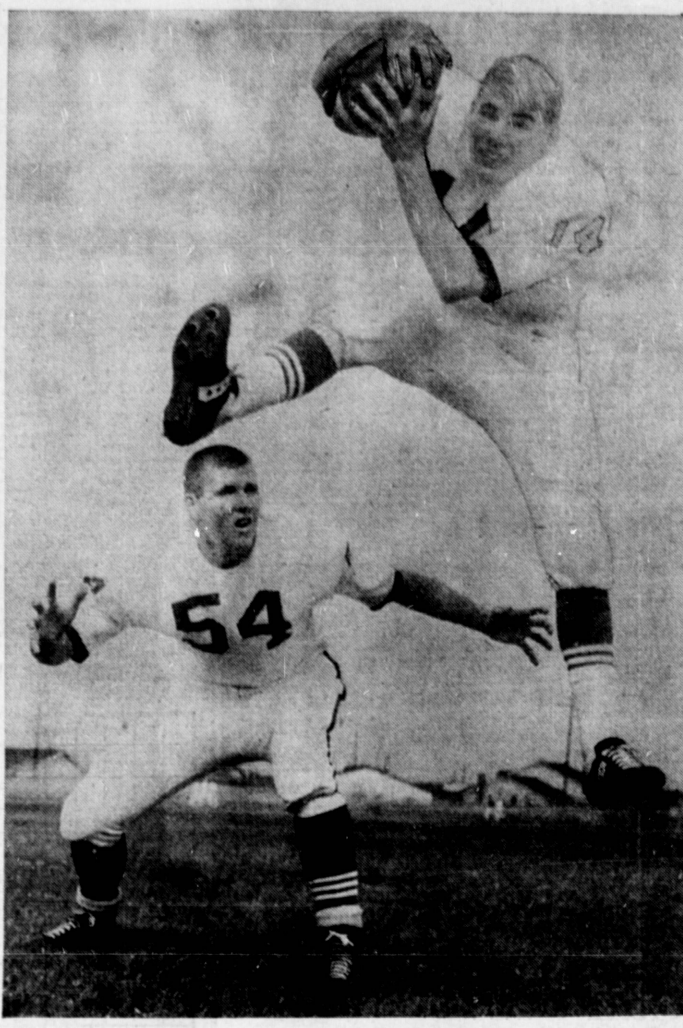
Horse Show To Be on TV

Opening events of the 1965 Portuguese Bend National two-day Horse Show at the Portuguese Bend Riding Club, will be telecast 'live' on KTTV, Saturday afternoon, from 3 to 5 p.m. over Channel 11.

Don Lamond, KTTV personality will commentate the festivities.

The All-Junior Show will have three medal and 11 stake classes among the 18 classes competing.

Winners of the medal classes will be eligible to enter final competition for United States championships later in the fall at the Cow Palace and Madison Square Garden.



GALLOPING GHOST . . . Dale Hewitt (14) leaps in front of Center Jay Stuart (54) to catch a pass in preseason drill at South High School. The Spartans, who failed to win a Bay League game last year, open their 1965 season Friday in a non-league game against defending Bay League titlist Palos Verdes. (Press-Herald Photo)

South High Shows Signs of Offense

By HENRY BURKE
Press-Herald Sports Editor

It wasn't exactly the same as watching a game of show-down, but the South High student body turned out Friday night to see the Spartans play an intrasquad football game and learned the team will have a hand in things this year.

Coach Ken Swift shuffled through his deck of 52 players and they dealt him a pair of sixes for the night.

Swift said he discovered some interesting things about the squad, most of which pleased him. "The contact was especially good," he said.

The three quarterbacks look like three aces. Scott Christensen alternated with Jerry Dudley on the Green team. When Dudley was in the game Christensen played fullback. Coach Swift said Scott would probably concentrate on the double role throughout the season.

How much Dudley plays depends on Snapper Douglas, a junior, who also enjoyed a successful evening jockeying the White machine.

The all out tussle cost the recurrence of a knee injury to end Jim Jennings of the Green squad. He came up lame knocking Douglas out of bounds on a 5 yard roll-out at the goal line.

When time resumed Chuck Hobbs scored the game's first TD from the 1-yard line with 12 seconds remaining in the first half.

The Green tied the count at 6-6 on the first series of the second half. Ron Locke ran 44 yards on a cutback play for the big yardage and Christensen eventually smacked over from the three. The 70 yard drive took eight plays.

Exchanges of fumbles and pass interceptions halted other scoring threats. Both

teams moved the ball well. Tackle Jim Kauble picked off two pass interceptions for the White team. Tackles Ray Ward and Ron Kammerer and Guard John Froseth were singled out for good efforts for the Green and Randy Bausman and Kauble got the plaudits for the Whites in the line.

Transfers who have brought smiles from the coaching staff are Kauble, Jeff Arrieta, a hard running junior back; and Augie Felando, a junior pass receiver.

None of the backs dominated the rushing game, although Dale Hewitt divided much of his time between sweeps and target practice for Douglas. Hewitt could also play quarterback if needed, but was not used there in the scrimmage.

If quarterbacks made all the difference, Swift could go into the Bay League with four aces this season.



A-6

SEPTEMBER 19, 1965

EMMETT ASHFORD GOES BIG LEAGUE

Emmett Ashford, popular Negro umpire, has been appointed to the American League umpiring staff by League President Joe Cronin.

Ashford will join a staff of 23 umpires at spring training next year.

When Ashford became the first Negro to break into the Pacific Coast League 12 years ago, his dramatic arm-flailing gestures became an instant hit with the spectators, but he was also criticized for competing for attraction with the players.

He defends his style by saying, "I'm the kind of person who can't do anything by halves. I have my own style. It's me, and I can't change."

Ashford, whose "calls come from deep inside," uses the same umpiring techniques he inaugurated more than 20 years ago while handling local softball and high school games.

He performed then with great zest before a handful of spectators. The show now moves into the big arena.

Raceway To Open

Four of America's greatest racing drivers will converge on Las Vegas Tuesday to inaugurate the newest and most modern track in the nation, the Stardust International Raceway.

The four, Parnelli Jones, Hap Sharp, Ken Miles and Walt Hansgen, will individually test the track at 10:30 that morning in a series of exhibition drives.

Jones will race a Grand Touring Ford, Miles a Daytona Cobra Coupe, and Sharp, an MG Midget racing car.

The inauguration of the track is a prelude to two events which have already been scheduled; a preliminary race which has been set for Oct. 2-3, and a \$37,000 Grand Prix, scheduled for Nov. 13-14 which will feature the nation's finest drivers.

SAN PEDRO PREP BACK SUCCUMBS

A Fermin Lasuen full-back, Everett Gray, 16, succumbed Wednesday after taking part in football practice at the San Pedro high school.

He became the 16th fatality in the nation this year. An autopsy was to be performed to determine the cause of death.

Gray collapsed while dressing after practice.

Coach Bob Biaz said there had been no scrimmaging, but only dummy tackling during the afternoon workout.

It was the first high school "football fatality" in Southern California in several years.

Jerry Ball Gets QB Job at North

Jerry Ball, who took over as quarterback at North High last week after Henry Lopez broke his ankle, delighted Coach Ed Levy by his performance in an intra-squad "Blue and White" game Friday night.

A graduate of last year's junior varsity squad, Ball was used offensively by both teams in a 7-6 Blue victory. Spelling Ball during the action were Terry Skeen and Chris Farasopoulos who will be given plenty of opportunity to help fill the quarterback gap.

The "scrimmage" produced a particularly hard running effort by letterman Steve Schmitz, halfback, and Kent Major, the fullback.

Halfbacks Toki Katsuki and Rich Gonzales give the Saxons some good speed. Gonzales is up from the Bees.

Singled out for an exceptional job on defense was Tex Deering.

In explaining his pleasure with the game, Coach Levy said there simply was not a disappointment. "The kids hit hard and none of the men we are counting on was unimpressive," he said.

Mike Tuffley, a halfback, sustained the only injury when he was hit in the arm.

The Blue touchdown came in the second quarter on a 3-yard run by Schmitz and a place kick by Craig Cochran.

Farasopoulos scored for the White team on a 5-yard rollout in the third period.

The Saxons will go through a control scrimmage against North tomorrow.

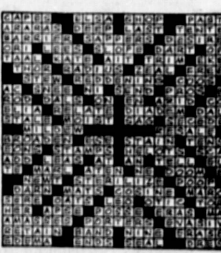
CO-CAPTAINS Greg Barton and Steve Swanson have been elected Long Beach City College co-captains for the 1965 football season.

Football Results

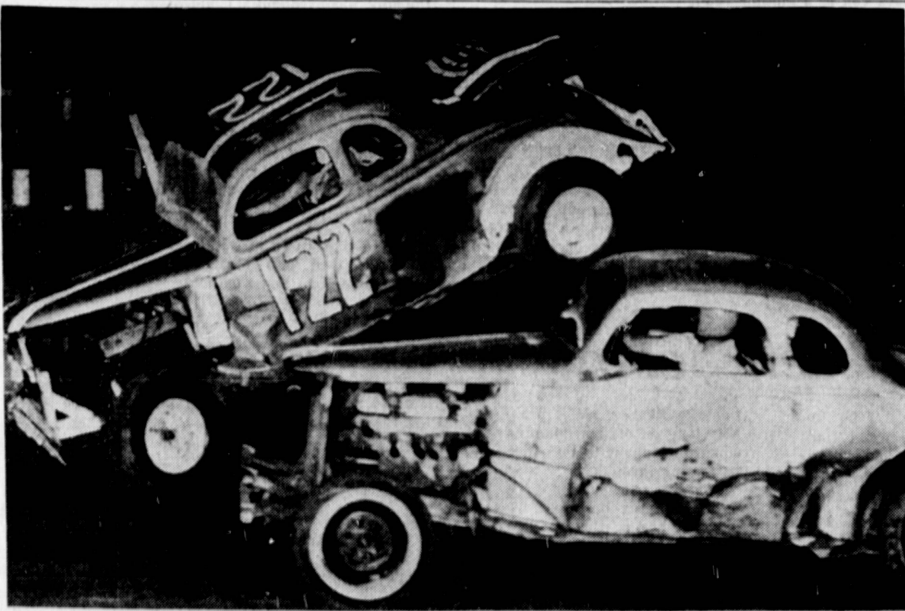
COLLEGE USC 20, Minnesota 20 (tie), Long Beach CC 49, Everett, Wash., 6.

HIGH SCHOOL South "Green" 6, "White" 6 (tie), West "Brown" 12, "Gold" 0, North "Blue" 7, "White" 6.

SOLUTION



MARY CARTER PAINTS
"Where You Get Two for the Price of One"
MARY CARTER PAINTS
1801 CARRILLO
FA 8-8640



UP AND OVER . . . goes ace ARA Figure 8 stock car driver Jerry Kessler of Torrance atop the speeding Carl Balicki in typical action seen Sunday nights at Ascot Park. Team matches will be inaugurated next week at the speedway.

the CAVE

NOW OPEN RESTAURANT COFFEE SHOP

SUNDAY — THURSDAY 6 A.M. — 1 A.M.
Friday and Saturday 6 A.M. — 4 A.M.

3555 TORRANCE BLVD., TORRANCE, CALIF. 90503 • Phone 370-6321

FOR SECURITY BE MODERN GO MODERN

SHOPLIFTING CONTROL RETURN CHECK CONTROL GENERAL SECURITY

Modern INVESTIGATION AND SECURITY PATROL

28015 S. NORMANDIE — TORRANCE 328-3914

Lund CO. AGENTS

Dear Customer: As you know, we have been associated with the Gilbert C. Van Camp Insurance Agency, Inc., one of the largest and oldest insurance organizations. Lund Co. will continue to provide local and independent service to you aided by the resources of Van Camp Insurance.

VAN CAMP INSURANCE

22330 HAWTHORNE BLVD., Suite 201 TORRANCE • Phone 378-9266

Damon Lane

APPEARING WEDNESDAYS THROUGH SATURDAYS

SOUTHWEST BOWL

1149 SO. WESTERN AVE. at IMPERIAL L.A. PL 7-2211