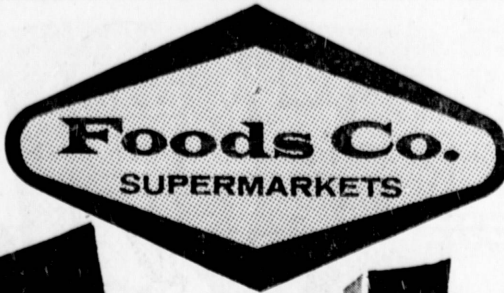


AT



THIS WEEK

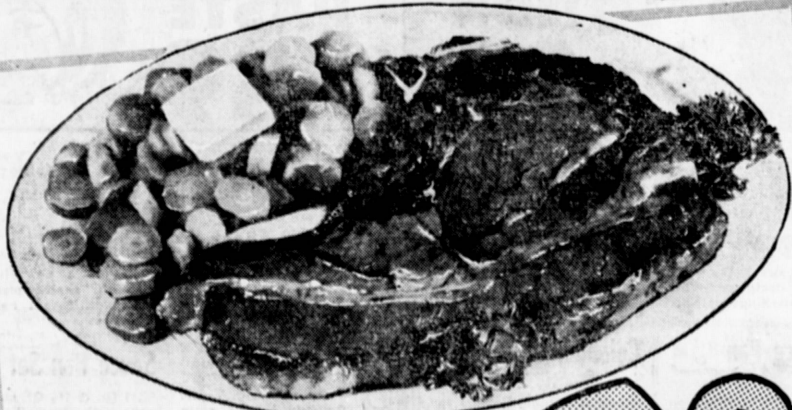
Turkey



U.S.D.A. GRADE 'A'
READY TO COOK
**YEARLING
HENS**

29^{c lb}

NOTE! For best results follow easy cooking instructions on label.



U.S.D.A. CHOICE BEEF
**LARGE MEATY CUTS
RIB STEAKS**

79^{c lb}

U.S.D.A. CHOICE BEEF
**BLADE CUTS
CHUCK STEAK**

39^{c lb}

USDA Choice BONELESS **Chuck Roast 69**^{c lb}

U. S. CHOICE BEEF EXCLUSIVELY

USDA CHOICE THRILLING GRILLING FOR YOUR LABOR DAY **STEAKOUT**

U.S.D.A. CHOICE BONELESS FAMILY STEAKS 89 ^{c lb}	U.S.D.A. CHOICE BEEF CLUB STEAKS 98 ^{c lb}
U.S.D.A. CHOICE 7-BONE CHUCK STEAKS 49 ^{c lb}	U.S.D.A. CHOICE O-BONE CHUCK STEAKS 59 ^{c lb}
U.S.D.A. CHOICE LG. END RIB ROASTS 79 ^{c lb}	U.S.D.A. CHOICE BONELESS SPENCER STEAKS \$169 ^{lb.}

THE REAL McCOY - 1-LB. EXTRA LEAN **BEEF SAUSAGE** **49**^c

THE REAL McCOY - 12-OZ. EXTRA LEAN **BEEF BACON** **59**^c

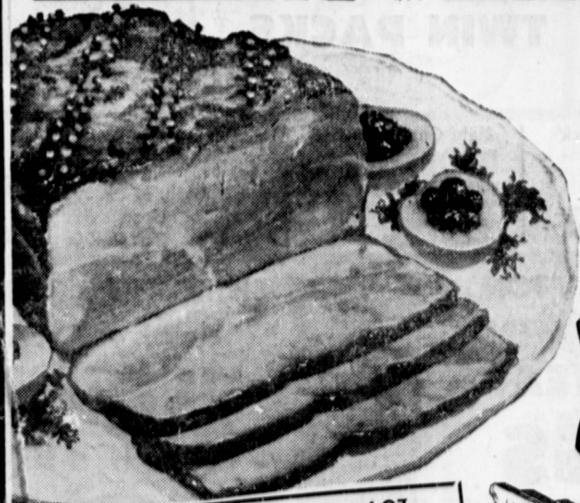
FULLY COOKED - CURED CENTER CUT **HAM SLICES** **89**^{c lb}



FRESH LOCAL CAUGHT
Sea Bass Fillet
SEAFOOD SPECIAL **69**^{c lb}



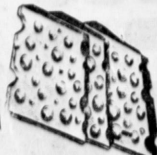
READY-TO-SERVE **DELI SPECIALS**



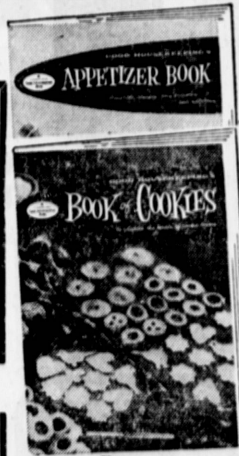
PATRICK CUDAHY
**BONELESS
PORK
SHOULDER
PICNIC**

3 LB. CAN **\$199**

THE REAL McCOY LEAN SLICED - 4-OZ.
PASTRAMI **49**^c
CORNED BEEF 59c



CACHE VALLEY SLICED
**SWISS OR JACK
CHEESE** **59**^c
LARGE 12-OZ. PKG.



Now! from **Good Housekeeping**—the greatest name in meal planning, gracious entertaining, and dependable recipes . . .

The **NEW**
GOOD HOUSEKEEPING COOKBOOKS
THIS WEEK . . . VOLUMES 1 AND 2

APPETIZER BOOK
AND BOOK OF

COOKIES **39**^c
SUMMERTIME COOK BOOK STILL AVAILABLE FOR **29c**
Handsome Protective Binder—Only 79c