

# FOOD BARGAINS

OFTEN A DIME LESS - NEVER A PENNY MORE

**7 BIG SALE DAYS**  
Thurs. thru Wed.,  
January 14 to 20  
1965

WINE  
PA  
P  
\$  
HALF  
QUART  
BTL.

NESTLE'S  
**CHOCOLATE BARS**  
REGULAR 5c BARS  
EACH **33c**




## CHUCK BEEF POT ROAST

USDA 'CHOICE OR TABLE PRIDE STEER BEEF. ALL OUR MEATS ARE UNCONDITIONALLY GUARANTEED. YOUR MONEY BACK IF NOT COMPLETELY SATISFIED.

**33c** LB.

## GLOBE A-1 NOODLES

1-LB. PKG. **29c**

SOFT-Q  
**PAPER TOWELS**  
SAVE 16c  
ROLLS **81c**

## S & F COFFEE

SAVE 10c  
RICH AND MELLOW  
1-LB. CAN **59c**

**MINCE or PUMPKIN FRUIT PIES**  
BANQUET OR COUNTY FAIR 8" FAMILY SIZE **25c**

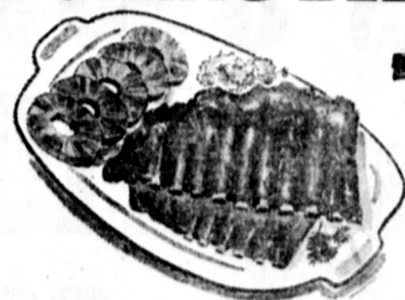
**F & P FINE FOODS**  
STEWED TOMATOES 6 TALL 303 CANS \$1  
SOLID PACK TOMATOES 4 LARGE NO. 2 1/4 CANS \$1  
TOMATO JUICE 5 JUMBO 46-OZ. CANS \$1

**IMITATION ICE MILK**  
GOLDEN CREME 1/2 GAL. CTN. **29c**  
SAVE .10c

SAVE 6c  
**NESTLE'S MORSELS** 6-OZ. PKG. **19c**  
TOFOOD .. 2 TALL 15 1/2-OZ. CANS **29c**  
FINE KRISPY WACKERS .... 1-LB. BOX **33c**

SAVE 20c  
YOUR CHOICE  
EACH **29c**

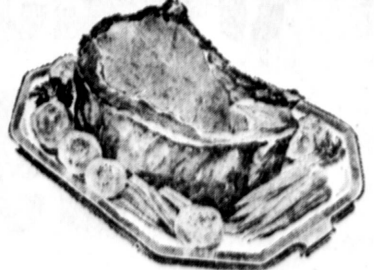
- LEAN/TENDER **CHUCK STEAKS** ... LB. **49c**
- DELICIOUS/TENDER/FLAVORFUL/BONELESS **FAMILY STEAKS** .. LB. **79c**
- SAVORY BONED AND ROLLED **BEEF ROAST** ..... LB. **79c**
- LEAN/TENDER/BONELESS **STEWING BEEF** .... LB. **69c**
- TENDER/LEAN/MEATY **SHORT RIBS** ..... LB. **25c**
- LEAN/TENDER/PLATE **BOILING BEEF** ..... LB. **19c**



**Spareribs**  
ARMOUR STAR MEDIUM SIZE **29c** LB.

- TENDER/TASTY **RIB STEAKS** .... LB. **79c**
- EXTRA GOOD TRIM **CLUB STEAKS** ... LB. **98c**
- ARM CUT **SWISS STEAKS** . LB. **59c**
- MADE FRESH HOURLY **GROUND BEEF** .. LB. **39c**
- FRESH/LEAN **GROUND CHUCK** LB. **49c**
- LEAN/JUICY **GROUND ROUND** LB. **59c**
- YOUNG TURKEY **DRUMSTIX** .... LB. **29c**
- MEATY/DELICIOUS **TURKEY WINGS**. LB. **29c**

## SLICED BACON



## PRIME RIB ROAST

USDA "CHOICE" or TABLE PRIDE STEER BEEF **69c** LB.

**BETTER FOOD MARKETS**  
ARMOUR STAR **CANNED HAM** 9 LB. CAN **\$5.98**

ARMOUR STAR **FRANKS** ALL MEAT 1-LB. PKG. **49c**  
XLNT POTATO **SALAD** 1-LB. WAX CUP **29c**

12-oz.—39c  
20-oz. Pkg.—49c  
Large 54-oz. Pkg.—99c  
KIRK'S CASTILE SOAP 3 bars 33c  
IVORY FLAKES Large Pkg.—35c  
IVORY SNOW Large Pkg.—35c  
GIANT OXYDOL Pkg.—93c  
MR. CLEAN 15-oz. Btl.—41c  
DOWNY FLUFFER Qt.—89c  
PREMIUM DUZ Gt. 83c  
SALVO TABLETS 48-oz. Pkg.—79c  
CONDENSED DASH 25-oz.—39c  
COMET CLEANSER Reg. 2 cans 83c

**BETTER FOOD MARKETS**  
South Gate 4466 TWEEDY BOULEVARD OPEN DAILY 9 A.M. to 10 P.M.  
Carson-Torrance 223rd ST. & AVALON OPEN DAILY 9 A.M. to 10 P.M.  
Los Angeles S. WESTERN at SLAUSON OPEN 9 A.M. to MIDNIGHT SUNDAY: 9 A.M. to 9 P.M.  
Torrance 5305 TORRANCE BLVD. OPEN DAILY 9 A.M. to MIDNIGHT  
Hollywood 4317 BEVERLY BLVD. OPEN DAILY 9 A.M. to 2 A.M.