

CLEARANCE

7 BIG SALE DAYS
Thurs. thru Wed.,
January 7 to 13
1965

DE "AA"
GE

37^c

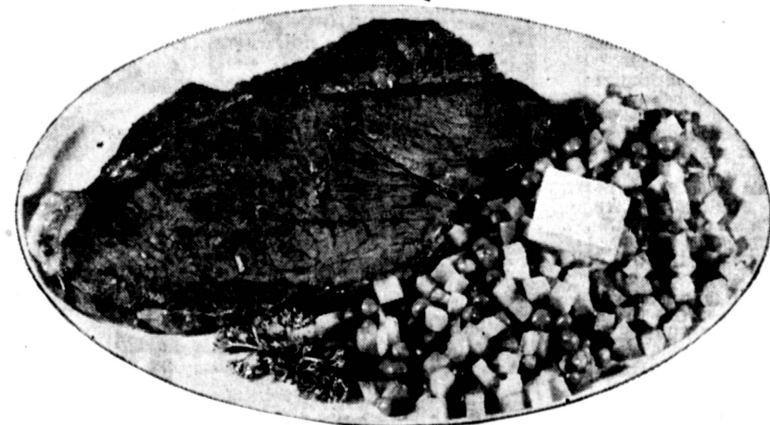
COCK O' THE WALK
FRUIT COCKTAIL



Save 8c a Can

Tall No. 303 Can

15^c



ROUND STEAK

USDA "CHOICE" OR TABLE PRIDE STEER BEEF. ALL OUR MEATS ARE UNCONDITIONALLY GUARANTEED! YOUR MONEY BACK IF NOT COMPLETELY SATISFIED.

BONE IN

LB.

67^c

CHICKEN • BEEF • TURKEY
BETTY BAKER MEAT PIES

2 FULL 7-OZ. PIES **29^c**

SWANSON TV **DINNERS**



Complete Dinner

SAVE 16c ALL VARIETIES

49^c

1 dollar Sale

- SAVE 17c ON SPRINGFIELD **CATSUP** 7 12-OZ. BTL. \$1
- SAVE 44c ON SPRINGFIELD **TOM. SAUCE** 16 8-OZ. CANS \$1
- SAVE 24c ON SPRINGFIELD **SPINACH** 8 TALL 303 CANS \$1
- SAVE 16c ON SPRINGFIELD/SLICED or WHOLE **BEETS** 8 TALL 303 CANS \$1
- SPRINGFIELD/PLUMP/SAVORY **Pork'n Beans** 8 TALL 300 CANS \$1
- SPRINGFIELD APPLE JUICE OR **CIDER** 4 QT. BTL. \$1

COCK 'O THE WALK **VEGETABLE JUICE COCKTAIL**

SAVE 34c

JUMBO 46-OZ. CANS

\$1

BETTER FOOD OR VOGUE **DETERGENT WASHING POWDER**



GIANT PKG. SAVE 10c

39^c

SPRINGFIELD **6 FLAVORS Gelatin**



REG. PKGS.

10 59^c

- LEAN/BEEF STEAKS **BONELESS ROUND** LB. **79^c**
- LEAN/BONELESS STEAKS **SIRLOIN TIP** LB. **98^c**
- TENDER/SAVORY **BAR-B-Q STEAKS** LB. **98^c**
- BONELESS STEAKS **TOP ROUNDS** LB. **98^c**
- LEAN/BONE IN **RUMP ROAST** LB. **67^c**
- TENDER BEEF ROASTS **BONELESS RUMP** LB. **79^c**



SIRLOIN STEAKS

EASTERN CUT
USDA "CHOICE" or TABLE PRIDE STEER BEEF

89^c

- WASTE FREE **T-BONE STEAK** LB. **95^c**
- SHORT CUT/NO TAIL/STEAKS **PORTERHOUSE** LB. **98^c**
- LEAN/BONELESS **TOP SIRLOIN** LB. **\$1²⁹**
- TENDER/LEAN **CLUB STEAKS** LB. **95^c**
- DELICIOUS AND TENDER **CUBE STEAKS** LB. **98^c**
- TENDER/CUT THICK OR THIN **SWISS STEAKS** LB. **67^c**
- MADE FRESH HOURLY **GROUND ROUND** LB. **65^c**
- MADE FRESH HOURLY **GROUND BEEF** LB. **39^c**

MORRELL YORKSHIRE/SLICED **BACON** 1-LB. PKG. **49^c**

- HALIBUT STEAKS** From cold, Northern waters LB. **49^c**
- FRESH GROUND CHUCK** FRESH GROUND EVERY HOUR LB. **59^c**

BETTER FOOD *Delicatessen*

PLAIN OR BUTTERMILK **BONNIE MAE BISCUITS** 10 TUBES OF 10 **79^c**

SWISS **CHEESE** ECONOMY • SLICED 8-OZ. PKG. **25^c**

MIDGET **SALAMI** GRAND TASTE ALL BEEF 12-OZ. PKG. **49^c**

XLNT/BEEF **TAMALES** 4 8-OZ. EACH **\$1**

WOODBURY SOAP 1c SALE, 4-pak reg. 35c
GERBER'S BABY CEREAL, 8-oz. 2 pkgs. 39c
KERN'S GRAPE JELLY, 12-oz. jar 29c

HEINZ STRAINED BABY FOODS 3 jars 35c
MORTON'S MACARONI & CHEESE, 8-oz. 4 for \$1
RENUZIT CLEANING FLUID, quart 69c