

# Battle Lines Drawn for Tax Fight in Sacramento

By VINCENT THOMAS  
Assemblyman, 68th District

As I predicted in a previous column, the need for additional state taxation will be a primary issue at our coming session. The recent two-day hearing by the Senate Revenue and Taxation Committee gave ample proof that it will be a hotly controversial one as well.

Spokesmen for county government who recommended that counties be given authority to raise the sales tax another half-cent to aid in reducing the local property tax drew a sharp rejoinder from the committee chairman. He said the argument being made was the same one he had been hearing during his 18 years in the Legislature for increased state subventions to local government. He declared that while state government has cut financial corners, local government "runs a pretty grandiose shop."

A SPOKESMAN for cities who supported the county recommendation called it one way to get local government off the state's financial back. He added that it is only realistic to recognize that the property tax must continue to bear the major share of local agency costs in California.

The committee had previously received a report from its staff and hired consultants listing various new or increased state taxes which would raise revenues by some \$311 million per year. The chairman referred to these alternatives as possibilities, not suggestions. He said it is apparent the Legislature would favor a boost in the sales tax, if it comes as part of a broad-based tax in-

## Parkinson Mans Scout Area Drive

Appointment of John F. Parkinson as district finance chairman for the Boy Scouts of America in the Harbor area has been announced. Parkinson is assistant general manager of the Los Angeles Harbor Department.

Formerly Harbor District chairman of the Boy Scouts for 1964, he will organize and recruit the men for the sustaining membership enrollment for 1965. Working with Parkinson will be Herb Walbert, district special enrollment chairman, and Jack Perry, unit enrollment chairman.

An agent for Van Camp Insurance Agency in San Pedro, Walbert served the Harbor District, Boy Scouts of America, as advanced gifts chairman on special enrollment in 1964.

Perry, of the Mobil Oil Company refinery, Torrance, has been area and division chairman on unit enrollment for the past two years. Contributions to this drive are annually solicited by volunteers who believe in building the future of America in young men. More than 90 per cent of the funds received as a result of this enrollment goes into programs and training for the youth of the Harbor area.

crease program. Later in the meeting, consultants submitted another report proposing increases in the state income tax estimated to raise an added \$279 million per year.

A REPRESENTATIVE of the Board of Equalization opposed any "across-the-board" increase in the sales tax, but called for a general program of closing loopholes in the existing sales tax, and for the imposition of the tax on the rental or leasing of consumer items ranging from automobiles to computers. He estimated that taxation of rented items including clothing, linen supplies, construction equipment, trailers and sound and lighting equipment would produce some \$20 million annually. Taxation of casual sales of motor vehicles, now exempt, would raise \$4 to \$6 million per year.

Some 30 witnesses appeared to testify on proposals to raise taxes on alcoholic beverages and tobacco, or to license night horse racing. Strong opposition was voiced by beer, wine, and tobacco interests on any increased "sin taxation" on their products. Licensing of night horse racing was vigorously debated, harness horse spokesmen supporting it, while theater representatives opposed it. The State Horse

## Red Cross Aids Two Families

Two area families left homeless by fire have found out what the Red Cross does to aid disaster victims.

The families, those of Antonio Grahedra and Juan Torres, were left homeless when fire destroyed their duplex home at 21830 Delores St. in Torrance. The families are now living in Wilmington and are regaining their pre-disaster standard of living.

Max Orsburn, chairman of the disaster committee of the Wilmington Red Cross, said expenditures of \$1,202.35 have been made by the Red Cross to help the families recover from their losses.

CASH GRANTS enabled the families to buy new clothing and household supplies, as well as furniture and food. Red Cross also provided blankets, sheets, pillow cases, and diapers from its own stockpile.

This is the 84th consecutive year in which the Red Cross has rendered similar aid to thousands of victims, Orsburn said.

"The Red Cross is the nation's congressionally chartered voluntary disaster relief agency," he said, "and its work in such catastrophes as the Baldwin Hills dam break, earthquakes, hurricanes, tornadoes, and explosions has become the expected thing."

"BUT RED Cross also is on the job to help single families in disasters," he added. Most important, Orsburn said, is that the public and the disaster victims know that all Red Cross disaster aid is in the form of outright grants, not loans.

## Brownie Troop 1989 Ends A Busy December Program

Troop 1989 had a successful cookout under the leadership of Mr. and Mrs. Edward Nishimura and Mrs. Dennis Chojnacki on Dec. 12 at Normandie Playground. The Brownies cooked hot dogs and s'mores over the grill, played games, sang songs, and had a wonderful time, the leaders report.

Members of Brownie Troop 1989 participating in the cookout were Erin Amby, Diana Bukaty, Denise Chojnacki, Leah Gambill, Janice Nishimura, Jayne Sampson, Janyce Sampson Cathy Therberge, Deborah Rice, Marsay McCardle, Bonnie McRae, Linda Byrne, Cheryl Kalkofin and Denise Duchsherer. Unable to attend were Amy Meadows, Lisa France, and the co-leader, Mrs. Wanda Gambill.

The Brownies spent two meeting periods in December making trays for patients in Children's Hospital. They made cute little Santas out of egg cartons to be plac-

ed on the children's food trays Christmas morning.

On Dec. 17, the troop had its Christmas party during part of the meeting time at the home of Mrs. Nishimura. Tuesday evening the group went caroling and then ended up at the home of Mrs. Chojnacki, where members of Girl Scout Troop 2554 served hot cocoa.

### WIPERS WORKING?

Now is the time to see that your windshield wipers are in the best working order. Don't wait until the next rainstorm... then it may be too late to prevent an accident because you couldn't see.

### CHECK YOUR CAR

Why not give your automobile a pre-holiday check-up and make certain that all parts — tires, brakes, windshield wipers, lights—are in tip-top shape. It may save you future time, money... and could prevent an accident.



4-H CLUB DISPLAY... Members of the Mustang 4-H Club of Carson observed 4-H Club Week recently by displaying samples of their craft and project work in the show window at Stevens Department Store at Carson Street and Main. Here with Bob Baskin, assistant manager of the store, are Cynthia Kelly, Pat McNemar, and Sheila McNemar. Inside the store are Genevieve Moody and Lynn Kelly.



# HAPPY NEW YEAR



YOUNG, TENDER  
FRESH U.S.D.A. GRADE A

## CHICKEN FRYERS

Cut Up, Pan Ready, LB. 33¢

WHOLE LB. 29¢

FRESH Chicken Fryer Legs LB. 49¢

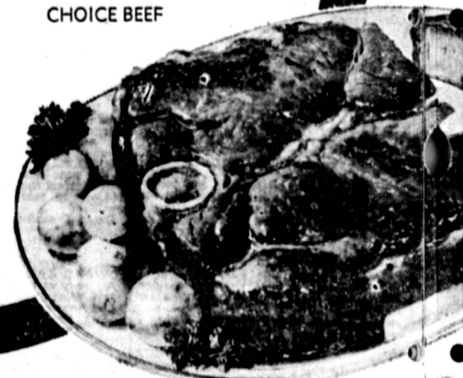
FRESH Chicken Fryer Thighs LB. 59¢

FRESH Chicken Fryer Breasts LB. 59¢

U.S.D.A. GRADED CHOICE BEEF

## ROUND STEAK

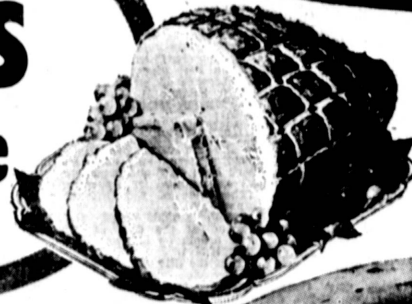
CUT ANY THICKNESS LB. 69¢



FARMER JOHN OR LUER  
SMOKED, SKINNED, FULLY COOKED

## HAMS

SHANK PORTION (as cut) LB. 33¢



FARMER JOHN OR LUER FULLY COOKED, SKINNED, SMOKED

## Whole Hams

SWIFT'S PREMIUM FULLY COOKED BONELESS READY TO SERVE

## Canned Hams

FRESH, EASTERN

## Leg of Pork

U.S.D.A. CHOICE BEEF OVEN READY

## Rump Roast

SWIFT'S PREMIUM  
Brown 'n Serve  
Link Sausage  
8-OZ. PKG. 49¢

CENTRAL AMERICAN

## BANANAS

DELICIOUS IN SALADS, ON CEREAL OR HOME-MADE SUNDAES LB. 9¢

FRESH HAWAIIAN

## Pineapple

DEGLET NOOR EACH 39¢

## Dates

1 1/2-LB. CUP 49¢ (RE-USABLE PLASTIC CUP)



Delicatessen...

HORMEL ALL MEAT 1-LB. PKG. 49¢

WILNO KOSHER Franks 12-OZ. PKG. 89¢

WILNO KOSHER Franks 12-OZ. PKG. 89¢

WILNO KOSHER Knockwurst 12-OZ. PKG. 89¢

WILNO KOSHER MIDGET Salami 12-OZ. CHUB 89¢

WILNO KOSHER MIDGET Bologna 12-OZ. CHUB 89¢

MARKET BASKET CHEESE Mild Cheddar LB. 59¢

MARKET BASKET CHEESE Aged Cheddar LB. 69¢

MARKET BASKET Potato Salad 1-LB. CTN. 29¢

KRAFT AMERICAN, PIMENTO OR SWISS 8-OZ. PKG. 29¢

KNUDSEN'S Cream Cheese 8-OZ. PKG. 29¢

PILLSBURY—8-OZ. PKG. Cinnamon Rolls 4 FOR 1¢



HAYDEN, STONE STOCK MARKET SEMINAR  
in conjunction with the PACIFIC STATE BANK  
presents a sophisticated analysis of "TODAYS MARKET TRENDS"

Conducted by Donald K. Speirs  
at PACIFIC STATE BANK  
21600 South Normandie — Torrance

Tuesdays, January 5, 12, 19, and 26  
7:45 to 9:30 p.m.

ADMISSION FREE

For information and reservations please call  
320-2980 or FR 7-6711

HAYDEN, STONE  
Incorporated—Established 1892  
MEMBERS NEW YORK STOCK EXCHANGE  
27777 Silver Spur Road, Rolling Hills Estates  
STOCKS BONDS MUTUAL FUNDS

Remaine Lettuce FRESH CRISP 2 FOR 19¢

Red Yams FRESH AND FLAVORFUL LB. 19¢