

NEW RAMBLER AT COST

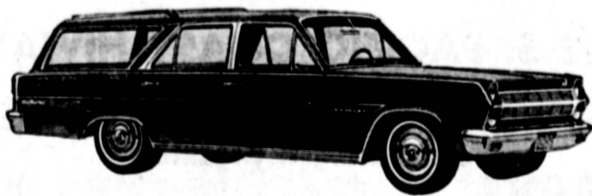
Yes, as unbelievable as it may sound, we are doing just that. You ask why? Simple, we have over **30 NEW 1964 RAMBLERS** and they must go now—yes, on a first come, first served basis ... and ...



WE ARE BREAKING SALES RECORDS WITH OUR 1965 RAMBLERS
 —the Sensible Spectaculars!

At Al Ortale Rambler In Torrance

Because we refuse to hold our prices up at this early stage of the 1965 model year . . . WE WANT TO SELL CARS—Savings now on all models of the Spectacular '65's — Our stock will surprise you and the gigantic savings will delight you. LOOK! LOOK! \$99 DELIVERS—48 MONTHS AVAILABLE!



LOOK AT THESE USED CAR SPECIALS

1959 PONTIAC 2-Door Sedan. Radio, heater, automatic. Beautiful white finish. Special \$895	1959 OLDSMOBILE Holiday Coupe. Radio, heater, automatic, power steering. Real sharp car \$1195	1960 VALIANT Radio, heater, automatic. This is a one owner block beauty \$895	1960 PONTIAC Catalina 4-Door Sedan. Radio, heater, automatic, power steering & brakes, factory air conditioning \$1795	1959 CHEVROLET WAGON V8, radio, heater, automatic. A real buy at \$995
1959 RENAULT Radio, heater. A real economy car. Special today \$495	1961 TEMPEST WAGON Radio, heater. Here is real economy—4 cylinder, standard transmission \$995	1962 RAMBLERS Classic Sedans and Station Wagons. Automatic, radio and heater. As low as \$1395	1963 RAMBLER WAGON Radio & heater. Economical overdrive. 1 owner car \$1995	1960 VOLKSWAGEN Radio & heater. A real buy \$1050

AL ORTALE RAMBLER

— 2 TORRANCE LOCATIONS —
 20710 HAWTHORNE BLVD. 1885 TORRANCE BLVD.
 1 BLOCK NORTH OF TORRANCE BLVD. (2 BLOCKS WEST OF WESTERN)

FR 0-4551

L. A. Ph. SP 2-3928

OPEN WEEKDAYS 'TIL 9 P.M.—SUNDAYS 'TIL 7 P.M.

FA 8-9222

CALL 326-0873 775-2753

RAY VANE

2909 PACIFIC COAST HWY. TORRANCE

'63 PLYMOUTH SPORT FURY Power windows, 361 h.p. engine, power steering, power brakes, R & H, 25,000 mile factory warranty left. \$2399	'63 FORD GALAXIE 500 2-Dr. Hardtop. Power steering, power brakes, R & H. Far better than average. Carries 1 year warranty. \$2199	'61 VALIANT STATION WAGON V-200. Max large 145 h.p. engine, power steering, R&H, automatic. \$1199	'59 PONTIAC BONNEVILLE 4-Dr. Hardtop. Exceptionally nice with R&H, power steering, power brakes, auto. \$1099
'61 RAMBLER STATION WAGON Popular stick shift. Very sharp. \$799	'61 FORD V8 STATION WAGON Local car. Ford-O-Matic, R&H, power steering. \$1399	'62 PONTIAC CATALINA 4-Dr. Hardtop. All vinyl interior, air conditioning, Hydramatic, power steering, power brakes. One owner. Can't be duplicated at this price. \$2099	'58 CHRYSLER NEW YORKER 2-Dr. Hardtop. 1 owner car with less than 39,000 miles. Fully equipped, pow. extras. \$899
'60 FORD FALCON 4-DOOR Auto., R&H. You can have this fine car for only \$799	'61 CHRYSLER WINDSOR 2-Dr. Hardtop. Auto., R&H, power steering, power brakes. A select buy at \$1899	'61 VALIANT V-200 4-DOOR Local 1 owner car. Auto, R & H. A bargain at \$1099	'64 VALIANT 4-DOOR Heater, automatic transmission. Over 40,000 miles still left on factory warranty. \$1850
'64 VALIANT SIGNET With vinyl roof, bucket seats, auto., R&H, large 6 cyl. engine. \$2299	'64 IMPERIAL CROWN 4-Dr. Hardtop. Every conceivable extra. Leather interior, air conditioning, low mileage. Over 40,000 miles factory warranty left. \$4899	'64 CHRYSLER NEWPORT 9 Passenger Station Wagon. Dual air cond., R, auto, & a host of other extras. 1 owner, sold new & serviced by us. Over 44,000 miles still left on factory warranty. \$3899	'60 MERCURY 4-DOOR SEDAN You transportation problems end here. Auto., R&H, power steering. \$899
'63 PLYMOUTH FURY 2-DR. HARDTOP Less than 22,000 miles. Carries 28,000 miles on factory warranty. 1 owner. Sold new & serviced by us. \$2299			

home of IMPERIAL -- CHRYSLER -- PLYMOUTH -- VALIANT

Telephone FA 8-4000 or TE 4-4581

WE WILL HELP YOU WRITE YOUR CLASSIFIED AD FOR BEST RESULTS

PRESS-HERALD PRESS JOURNAL and HARBOR MAIL