

Public Notice

PH-2729
6157
NOTICE OF TRUSTEE'S SALE UNDER DEED OF TRUST
Loan-0601060-73191
NOTICE IS HEREBY GIVEN that WESTWOOD ASSOCIATES, a California corporation, as Trustee, or Successor Trustee, or Substituted Trustee, pursuant to the Deed of Trust executed by EMIL EDWARD GOERIGEN and EUNICE M. GOERIGEN, Husband and Wife, and recorded August 30, 1963 in book T3227, page 412 of Official Records in the office of the County Recorder of LOS ANGELES County, California, and pursuant to the Notice of Default and Election to Sell thereunder recorded MAY 28, 1964 in book M1530 page 222 of said Official Records, will sell, on THURSDAY, OCTOBER 15, 1964 at 11:00 A.M. at the SOUTH FRONT ENTRANCE OF PACIFIC WESTERN MORTGAGE CO. LOCATED AT 10639 SANTA MONICA BLVD. BY THE CITY OF LOS ANGELES COUNTY OF LOS ANGELES, at public auction, to the highest bidder for cash (payable at the time of sale in lawful money of the United States of America) all right, title and interest, conveyed to and now held by it under said Deed in the property situate in THE CITY OF TORRANCE said County and State described as follows:
Lot 234 of Tract No. 16099, in the City of Torrance, County of Los Angeles, State of California, as per map recorded in Book 381, Pages 40 to 44 inclusive of Maps, in the Office of the County Recorder of said County.
Said sale will be made, but without covenant or warranty, express or implied, regarding title, possession or encumbrances, to satisfy the indebtedness secured by said Deed, including the fee and expenses of the Trustee and of the trustee created by said Deed, advances thereunder with interest provided therein, and the unpaid principal of the note secured by said deed; to-wit \$15,000.00 with interest thereon from SEPTEMBER 1, 1963 as provided in said note.
DATED: September 2, 1964
WESTWOOD ASSOCIATES, as such Trustee
MARSHALL BASKIN, Assistant Secretary.
VA-LHG623-114
W-Sept. 23, 30, Oct. 7, 1964.

Public Notice

PH-2733
CERTIFICATE OF BUSINESS, FICTITIOUS NAME
The undersigned do certify they are conducting a business at 1574 Mullin Ave., Torrance, California, under the fictitious firm name of J & A PAINT AND BODY SHOP and that said firm is composed of the following persons, whose names in full and places of residence are as follows: HAROLD W. McMURRAY, 2207 Nelson, Redondo Beach, California and ALICE L. McMURRAY, 2207 Nelson, Redondo Beach, California.
Dated September 21, 1964
HAROLD W. McMURRAY
ALICE L. McMURRAY
State of California, Los Angeles County
On September 21, 1964 before me, a Notary Public in and for said State, personally appeared Harold W. McMurray and Alice L. McMurray known to me to be the persons whose names are subscribed to the within instrument and acknowledged they executed the same.
(SEAL) Dorothy K. Sumowski, My Commission Expires April 8, 1968.
W-Sept. 23, 30, Oct. 7, 14, 1964.

DISPLAY CLASSIFIED DISPLAY CLASSIFIED

McMurrays
★ USED BARGAINS ★

- 5 PC. DINETTE SETS, FORMICA TABLE and washable covered chairs \$24⁹⁷
- TWIN MATTRESS \$12⁸⁷
- Good for bunk beds
- ZENITH CONSOLE TV \$89⁸⁶
- 21" picture tube guaranteed
- O'KEEFE & MERRITT Gas Washer, Dryer Combination. Originally \$500. \$149⁹⁸
- FAMOUS MAYTAG automatic washer. Completely automatic. Originally sold for \$250. 100% guaranteed \$99⁸⁹
- ZENITH PORTABLE TELEVISION \$69⁸⁹
- STEPPABLES (choice of finish) 2 for \$5⁰⁰
- PHILCO 2-Door Refrigerator with Freezer \$89⁹⁸
- 7 DRAWER KNEE HOLE DESK 52"X22" Nava-mar Top \$19⁹⁵
- MODERN BEDROOM SET, Dresser, mirror, headboard. 2 Nite stands. \$79⁹⁵

100% Guaranteed Satisfaction—
OPEN FRIDAY NIGHT 'TIL 9 P.M.
We Carry Our Own Contracts
Free Parking in Rear — Next to Model Market
909 AVALON BLVD. TE 4-4548
WILMINGTON

DISPLAY CLASSIFIED DISPLAY CLASSIFIED

DO YOU HAVE TIME To Enjoy Your Children?
YOU WILL — LIVING AT
DEL AMO PACIFIC
CO-OPERATIVE APARTMENT HOMES
IMMEDIATE OCCUPANCY

★ Enjoy the CAREFREE LIFE THAT HEATED POOL AND OUTDOOR FAMILY LIVING PROVIDES.
★ Freedom from OUTDOOR MAINTENANCE AND GARDENING WORRIES COUPLED WITH THE CHILDREN'S OWN PLAY FACILITIES OFFER MORE TIME TO HAVE FUN YOURSELF.
★ Del Amo Pacific IS SITUATED BETWEEN SOUTH BAY BEACHES AND SHOPPING AREAS, CONVENIENTLY NEAR SCHOOLS, CHURCHES AND INDUSTRY.

DOWN PAYMENTS FROM \$1395 INCLUDING SHARE COSTS

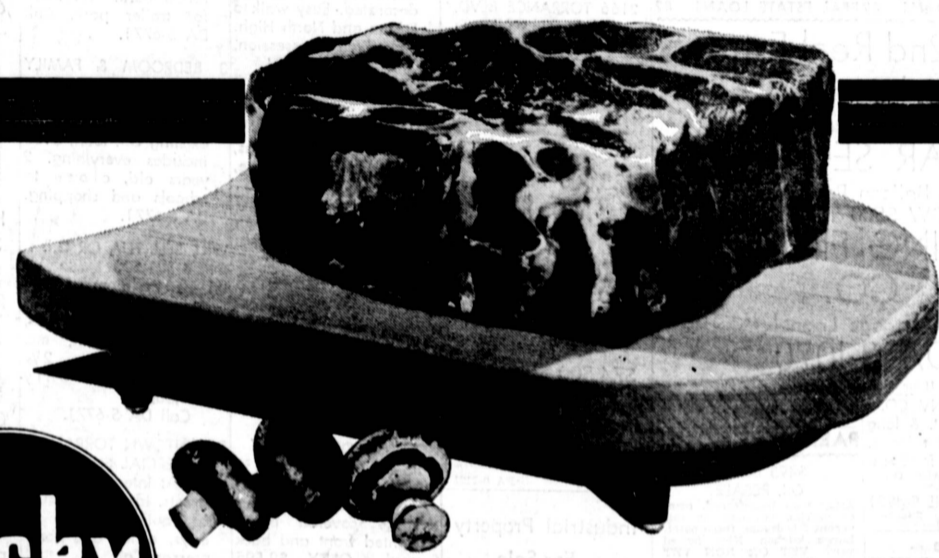
OFFICE HOURS: 10 A.M. TO 7 P.M. DAILY
YOU ARE INVITED TO INSPECT A FURNISHED MODEL TODAY
10% SELLING EXPENSE INCLUDED IN ALL SHARE PRICES. MAINTENANCE INCLUDED IN MONTHLY FEE.
NORTH DEL AMO AND PACIFIC COOPERATIVE APARTMENTS, INC.
A SOVEREIGN DEVELOPMENT COMPANY PROJECT—1807 ESPLANADE—REDONDO BEACH, CALIFORNIA



Del Amo Pacific
3300 W. Carson
TORRANCE
Phone FA 0-3171
FA 0-3152 SP 5-2591



To San Francisco
Robert S. Dollarhide, guidance consultant for the Torrance Unified School District, will travel to San Francisco Oct. 11. He will attend a three-day National Defense Education Act conference of project directors.



Lucky Features DISCOUNT Prices but... Insists On ONLY TOP QUALITY!

TOP QUALITY IN EVERY DEPARTMENT!

Whether it's your favorite brand of groceries, hair spray or toothpaste . . . you'll find it at Lucky . . . AND you'll buy it for less! If you enjoy meat with delectable flavor, taste and tenderness . . . then you'll enjoy Lucky's Guarantee of Complete Satisfaction! Each beef is individually selected by our meat specialists from only Top-Quality Steer Beef . . . properly aged . . . cut to our exacting specifications, removing all excess fat and bone before weighing . . . to give you more meat for your money. If you insist on quality . . . if you desire finer flavor and tenderness . . . then you'll love Lucky's Bonded Beef.*

this is only a partial listing of the wide selection in top-quality meats available at your favorite Lucky Discount Supermarket.

GROUND BEEF fresh to bone	33¢
FRYING CHICKEN fresh, USDA Grade A whole body	29¢
ROUND STEAK USDA Choice or Lucky Bonded	73¢
SWISS STEAK USDA Choice or Lucky Bonded	73¢
RUMP ROAST USDA Choice or Lucky Bonded	73¢
T-BONE STEAK USDA Choice or Lucky Bonded	98¢
SIRLOIN STEAK USDA Choice or Lucky Bonded	89¢
CHUCK STEAK USDA Choice or Lucky Bonded	49¢
STANDING RIB ROAST USDA Choice or Lucky Bonded	79¢
CHUCK ROAST blade cut	39¢
CROSS RIB ROAST boneless	79¢
SLICED BACON Lucky 1-pound package	51¢
OSCAR MAYER FRANKS all meat 1-lb. Pkg.	59¢
OSCAR MAYER BOLOGNA all meat, sliced 13-oz. Pkg.	59¢
SMOKIE LINKS Oscar Mayer 12-oz. Pkg.	65¢
BRAUNSCHWEIGER CHUBS Oscar Mayer 8-oz. Pkg.	37¢
SANDWICH SPREAD Oscar Mayer 8-oz. Pkg.	37¢
COTTO SALAMI Oscar Mayer 13-oz. Pkg.	69¢
SLICED BOLOGNA Oscar Mayer 7-oz. Pkg.	35¢
CHEESE SMOKIE LINKS Oscar Mayer 12-oz. Pkg.	65¢
ALL BEEF FRANKS Oscar Mayer 1-lb. Pkg.	63¢
OSCAR MAYER BACON sliced 1-lb. Pkg.	69¢

LEONARDS
TWO FOR ONE SALE!
BRAKE and FRONT END ALIGNMENT SPECIAL!!

53.70 VALUE!
4 DAYS ONLY!
32⁹⁵ MOST CARS

BONDED BRAKE RELINE HERE'S WHAT WE DO!

- Genuine Power-Bilt linings
- Rebuild all four wheel cylinders
- Refill with DuPont brake fluid
- Set and adjust eccentrics
- Bleed and flush hydraulic system
- Machine all 4 brake drums
- Repack front wheel bearings
- Inspect master cylinder

20,000 MILE WARRANTY

FREE BRAKE ADJUSTMENT for Life of Lining

FRONT END ALIGNMENT
Enjoy new comfort and ease of handling with a complete front end alignment. It saves wear and tear on your car tires, and will be the best investment you've ever made in your car. Expertly aligned by precision equipment.

NATIONALLY FAMOUS SHOCK ABSORBERS
Made by one of the nation's largest manufacturers. Double action "shocks" with automatic adjusting for severe road conditions. Fully guaranteed.
11.95 VALUE!
5⁸⁸ MOST CARS
COMPLETELY INSTALLED

LEONARDS

Torrance Store 25405 Crenshaw Blvd. Corner Crenshaw Blvd. and Pacific Coast Hwy. 325-1404	International 600 N. Sepulveda Bl. (2 Bks. S. of International Airport) El Segundo OR. 8-0225	Garden Grove 12871 Harbor Blvd. (2 Mi. S. of Disneyland) Garden Grove, Calif. JE. 4-2603
--	--	--

there is a Lucky Store to serve you at

LONG BEACH 6235 E. SPRING ST. PALO VERDE 4630 E. PACIFIC COAST HWY. 4255 E. 2ND STREET—MARINA LAKEWOOD CENTER 11029 ALONDRA—NORWALK	10721 ATLANTIC—LYNWOOD 4801 ATLANTIC—BELL 720 W. LA PALMA—ANAHEIM 700 NO. HARBOR LA HABRA 333 NO. EUCLID—FULLERTON 2456 SEPULVEDA—W. LOS ANGELES	LA MIRADA SHOPPING CENTER 933 E. LAS TUNAS—SAN GABRIEL EASTLAND SHOPPING CENTER 2510 PAC. CST. HWY.—HERMOSA 1516 PAC. CST. HWY.—REDONDO 24911 SO. WESTERN—LOMITA	3840 SEPULVEDA—W. TORRANCE 2515 TORRANCE BLVD.—TORRANCE 1035 SO. LA BREA—INGLEWOOD 10801 PRAIRIE—INGLEWOOD MON thru FRI 12 NOON 9 PM SAT 10 AM 7 PM SUN 10 AM 7 PM
--	---	---	--