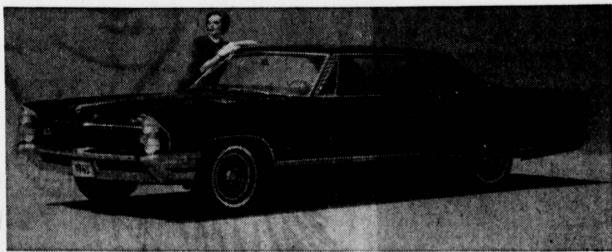


Scott Robinson Pontiac Presents the

First Showing

OF THE TERRIFIC NEW PONTIAC & TEMPEST 1965
ON DISPLAY THURSDAY, SEPTEMBER 24th



1965 PONTIAC GRAND PRIX

PONTIAC 1965

Beautiful New Design and Styling

SPOTLIGHTING the Fabulous

GRAND PRIX

More Beautiful Than Ever Before—Stunning New Design
EXCLUSIVE BOTH IN APPEARANCE AND PERFORMANCE

TEMPEST 1965

NEW BEAUTY

NEW LENGTH

NEW MODELS

NEW COLORS

NEW DESIGN



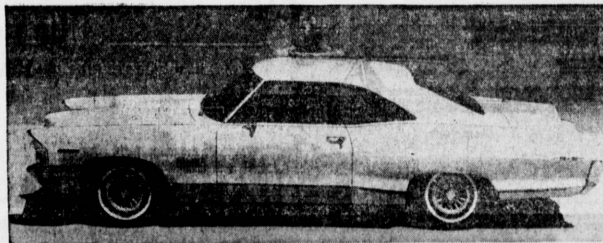
1965 PONTIAC TEMPEST Le MANS

3 TEMPEST SERIES

- **TEMPEST**
SPORTS COUPE—SEDAN—SAFARI
- **CUSTOM**
SPORTS COUPE—HARDTOP—SEDAN—SAFARI—CONVERTIBLE
- **Le MANS**
SPORTS COUPE—HARDTOP—SEDAN—CONVERTIBLE

3 GREAT PONTIAC SERIES

- **BONNEVILLE**
SPORTS COUPE—4-DOOR HARDTOP—STATION WAGON—CONVERTIBLE
- **CATALINA**
2 & 4-DOOR SEDANS—2 & 4-DOOR HARDTOPS—WAGONS—CONVERTIBLES
- **STAR CHIEF**
4-DOOR HARDTOP—4-DOOR SEDAN



1965 PONTIAC CATALINA SPORTS COUPE

BE OUR GUEST—SEE AND DRIVE THE NEW PONTIAC & TEMPEST!!

USED CAR SPECIALS

'61 FORD
SUNLINER
CONVERTIBLE
Medium blue, new white top. Cruisomatic, power steering, radio, heater, whitewalls, positively like new.
\$1295

'61 FALCON
DELUXE SEDAN
Automatic, radio, heater, whitewalls. Original throughout.
\$895

'61 RAMBLER
CLASSIC SEDAN
Automatic, power steering, radio, heater, whitewalls. Ideal family car.
\$995

'62 DODGE
HARDTOP COUPE
Polar "500". Arctic white, red leather interior. Automatic, power steering, power brakes, radio, heater, new whitewalls, bucket seats.
\$1795

Scott Robinson Pontiac

Takes the Worry Out of
BUYING A USED CAR

FREE

30-DAY UNCONDITIONAL
GUARANTEE ON ALL USED CARS

1960-1964—All Major Mechanical
Parts and Labor, Includes Engine,
Transmission and Rear End

ALSO:

1. New Spark Plugs
2. New Points and Condenser
3. Complete Tune-up
4. Lube and Oil Change
5. Gleaming Exterior Finish
6. Brake Inspection
7. Electric Inspection
8. Battery Inspection
9. A-1 Tires
10. Sanitized Interior

USED CAR SPECIALS

'61 PONTIAC
HARDTOP COUPE
Catalina series. Jet black, hydraulic, power steering and brakes, radio, heater, whitewalls, chrome wheels. Original throughout.
\$1695

'61 PONTIAC
SAFARI WAGON
9 passenger, hydramatic, power steering and brakes, radio, heater, whitewalls, luggage rack. Original.
\$1995

'62 BUICK
SKYLARK COUPE
Automatic, power steering, power windows, radio, heater, brand new whitewalls, FACTORY AIR, Polar white finish, red leather interior.
\$2295

'59 DODGE
STATION WAGON
9 passenger. Automatic, power steering and brakes, radio, heater, whitewalls.
\$1095

—DOZENS MORE TO CHOOSE FROM—

SCOTT ROBINSON PONTIAC

20340 HAWTHORNE BLVD., TORRANCE—OPEN EVES & SUNDAY

NEW CAR PHONE
FR 1-3521

USED CAR PHONE
FR 1-3525