

Grade AA Small Fresh Eggs Dozen



249^C
doz



Shasta Sparkling Soft Drinks

10^C for 69^C

Hawaiian Punch or Hula Highball 46-ounce



3^F \$1^R

C.H.B. 24-oz. Jar Mayonnaise or Salad Dressing



29^C

Hawaiian Punch Base Quart Size



89^C

Delrich 1-Lb. Oleo



229^C

Black Flag 11-oz. Ant-Roach Killer



39^C

Cock O' the Walk Yellow Cling Peaches



Halves or Sliced No. 2 1/2 Can **5^F \$1^R**

Cock O' the Walk Fruit Cocktail




No. 2 1/2 Cans **3^F \$1^R**

Cock O' the Walk Apricots



Whole Unpeeled No. 2 1/2 Can **5^F \$1^R**

Cock O' the Walk Bartlett Pears



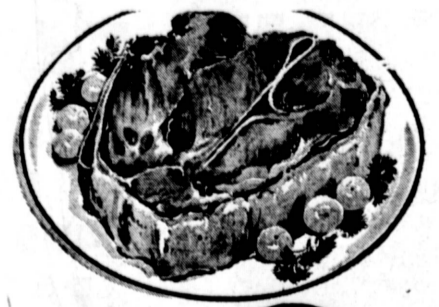
Sliced or Halves No. 2 1/2 Can **3^F \$1^R**

Dr. Ross Formula 27 Dry Dog Food . . . 10 lbs. **89^C**

Alta 1-lb. Can Coffee **69^C**

BILL'S BUTCHER SHOP FEATURING **RUCHTI BROS. BEEF**

BEST MEATS IN TOWN
NO PRE-PACKAGED MEATS ARE SOLD AT BILL'S
ONLY THE BEST MEATS, FRESHLY CUT TO ASSURE WHOLESOMENESS, ARE SOLD WITH PERSONAL SERVICE AND AT LOWEST PRICES!



RUCHTI
Chuck Roast 39^C lb

RUCHTI — Center Cut 7-BONE ROAST 49^C lb	RUCHTI ROUND BONE ROAST 59^C lb	RUCHTI — "Good Oven Roast" Boneless Shoulder CLOD 79^C lb
TENDER, LEAN CUBES STEW BEEF 79^C lb	FRESH LEAN GROUND BEEF 39^C lb	TABLE BRAND SLICED BACON 49^C lb
		GREAT FOR B-B-Q CENTER CUT CHUCK STEAKS 49^C lb



Giant Size Trend Regular 49c



29^C

Skippy 18-oz. P-Nut Butter



49^C

Van Camp, No. 1/2 Can Grated Tuna **6^F \$1^R**

Mazola, Pint Corn Oil **29^C**

Case-Swayne Cut Green Beans No. 300 Cans **6^F \$1^R**

- frozen foods**
- Cal-Ida — 2-lb. Bag French Fries **25^C**
 - Bridgeford — White (3 Loaves in Bag) Bread **49^C**
 - Bridgeford — Variety (3 Loaves in Bag) Bread **59^C**
 - M.C.P. Orange Juice Prod. 6-oz. 5 for \$1 12oz. **39^C**
 - Herb Ox Bouillon Cubes **21^C**
 - Ocean Spray, 300 Cranberry Sauce **27^C**
 - Morton's — 20-oz. Macaroni & Cheese **43^C**
 - O' Cello — Jumbo Sponges **55^C**
 - Rath's — 2 1/2-oz. Dried Beef **47^C**
 - Clorox — Quart Liquid Bleach **23^C**
 - N.B.C. — 1-lb. Oreo Cookies **49^C**
 - Scotkins Paper Napkins **2 for 35^C**
 - Scot — 100 Count Bathroom Tissue **2 for 27^C**
 - Giant Size Liquid Trend **49^C**
 - Schilling's — 4-oz. Ground Black Pepper **35^C**

- delicatessen**
- Dairy Fresh — 5-oz. Hamburger Cheese **3 pgs. \$1**
 - Luer's — All Meat Franks **45^C lb**
 - Hollywood — 1-lb. Margarine **2 for 69^C**

Toshi's FOODS

238th and Arlington, Torrance
(Same As Narbonne) AMPLE FREE PARKING



Best to Can or Slice — Freestone

Alberta Peaches 10^C lb

Good Eating or Cooking Gravenstein

Apples 10^C lb

Sweet and Mild Fancy Quality

Spanish Onions 4^C lb

Farm Fresh, Salad Favorite!

Romaine Lettuce 5^C ea