

Merry Christmas

Merry Christmas

**FESTIVE BEVERAGES**  
Top Quality White Rock  
**HOLIDAY BEVERAGES**  
Sparkling Water, Ginger Ale, Vodka Mix,  
Tom Collins Mixer



BETTY CROCKER  
MIX for  
**FUDGE BROWNIES**



For Holiday Needs  
**C & H BRAND**  
Brown or Powdered  
**SUGAR**



**SIX (6)  
DAY SALE**

Thurs., Dec. 19th thru  
Tuesday, Dec. 24th  
OPEN 'TIL 7 P.M.  
CHRISTMAS EVE

Closed Christmas Day., Wed., Dec. 25

**5** Jumbo \$1.00  
28-oz. No Deposit Bottles

**3** Large \$1.00  
16-oz. Pkgs.

**2** 1-lb. Boxes **25**

# CHRISTMAS

IMPERIAL AT BELLFLOWER  
CANOGA AT ROSCOE

17500 CRENSHAW BLVD.  
AT ARTESIA



2655 PACIFIC COAST HWY.  
AT CRENSHAW

FRIENDLY FOLKS WHO SERVE YOU. (OPEN TILL 7 P.M. CHRISTMAS EVE.)

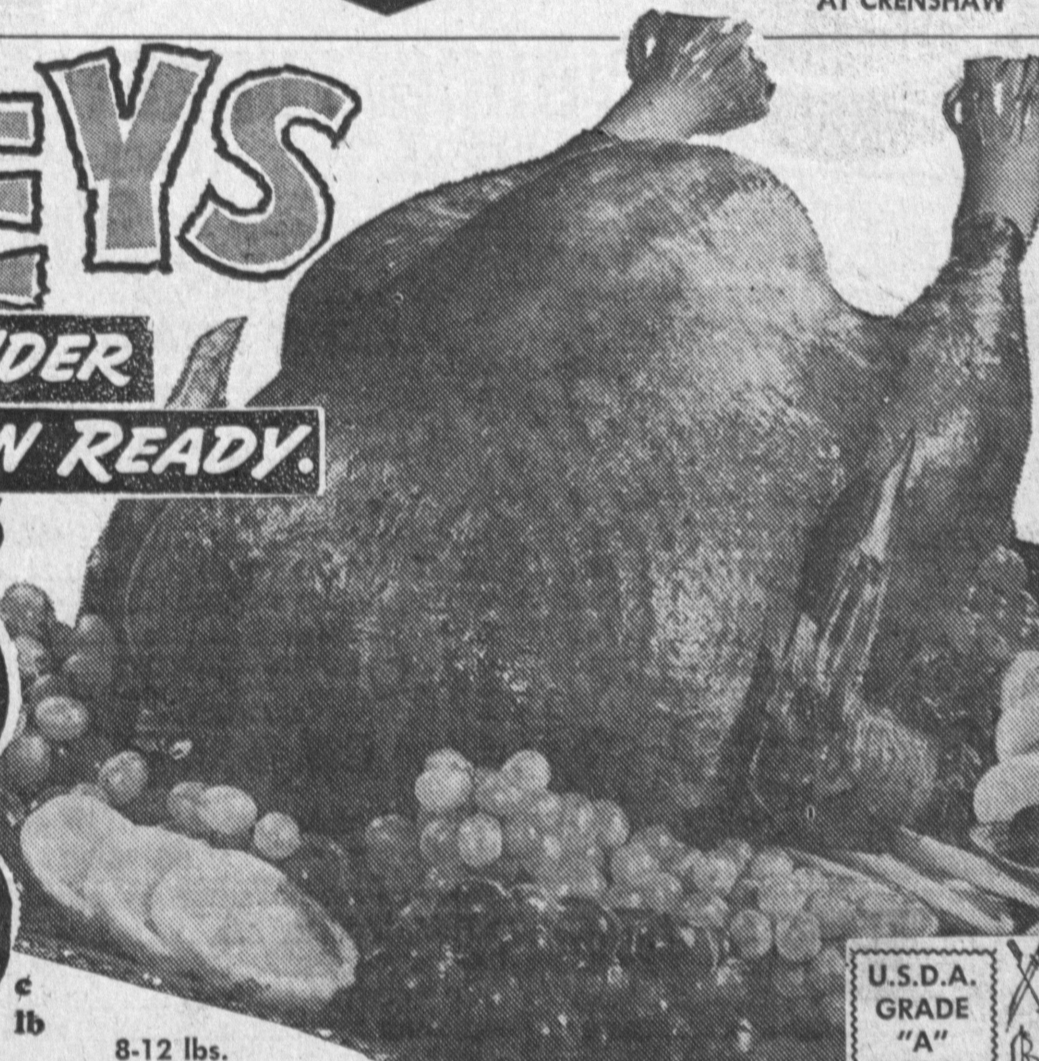
FOR ALL HOLIDAY COOKERY  
**FAMOUS A OLEO MARGARINE**  
**19**



GOLDEN RANCH  
**POULTRY STUFFING MIX**  
REGULAR OR CORN MEAL ENOUGH TO STUFF A 20-lb. TURKEY  
**39**

## TURKEYS

PLUMP · TENDER  
U.S.D.A. INSPECTED **OVEN READY.**  
16-20 lbs. Average Weight  
**YOUNG TOMS**



**33**  
U.S.D.A. INSPECTED YOUNG  
**HEN TURKEYS** 35<sup>c</sup> lb.  
U.S.D.A. Grade A — Genuine Long Island Young  
**DUCKLINGS** 49<sup>c</sup> lb.  
U.S.D.A. GRADE A FRESH ROASTING, 4 to 7 lbs.  
**CHICKENS** 49<sup>c</sup> lb.  
Morrel's Poultry Seasoned  
**SAUSAGE** 1-lb. Roll 39<sup>c</sup> lb.

U.S.D.A. GRADE "A" FLODEN BRAND  
**YOUNG TOM TURKEYS** 18-22 lbs. Avg. Wt. 35<sup>c</sup> lb.  
U.S.D.A. GRADE "A" YOUNG HEN  
**TURKEYS** 10 to 14 lbs. 39<sup>c</sup> lb.  
U.S.D.A. GRADE "A" GENUINE BELTSVILLE  
**TURKEYS** 6 to 8 lbs. Average Weight 49<sup>c</sup> lb.  
FRESH WESTERN  
**OYSTERS** 12-oz. Jar 69<sup>c</sup>  
FRESH EASTERN  
**OYSTERS** 8-oz. Jar 79<sup>c</sup>

Christmas Foods  
**VEGETABLE COMBINATIONS**  
Onions, Peas and Celery Sauce, Corn and Peas  
**4 89<sup>c</sup>**  
Minute Maid RANGE LIGHT 6 6-oz. Cans \$1

Holiday Dairy Foods  
Golden Creme Fresh GRADE AA **BUTTER** 1-lb. Ctn. 67<sup>c</sup>  
GOLDEN CREME **HALF & HALF** Pint Ctn. 26<sup>c</sup> Qt. Ctn. 47<sup>c</sup>  
WHIPPING CREAM 2 1/2 pints 65<sup>c</sup> ALL PURPOSE CREAM 2 1/2 pints 57<sup>c</sup>  
MOCHA MIX Pint Carton 29<sup>c</sup> LOW FAT MILK 1/2-Gallon 45<sup>c</sup>

Goodies  
3 12-oz. Glass **\$1.00**  
3 Twin Paks **\$1.00**  
**CREME** 29<sup>c</sup>  
14-oz. Pkg. 37<sup>c</sup>

Christmas Eve Smorgasbord  
Gino's Frozen Cheese-Tomato **PIZZA** 16-OZ. SIZE 59<sup>c</sup>  
Gino's Frozen Cheese & Sausage **PIZZA** 19-OZ. SIZE 69<sup>c</sup>  
Underwood Deviled **HAM** REGULAR SIZE 2 1/2-OZ. CAN 23<sup>c</sup>

Peppers & Chips  
**PEPPERS** 39<sup>c</sup>  
**PEPPERS** 39<sup>c</sup>  
Pint Ctn. 47<sup>c</sup>

Holiday Seasoning  
FAMOUS SCHILLINGS SEASONING  
CINNAMON 11/8-oz. 23<sup>c</sup> MINCED ONION 15/8-oz. 31<sup>c</sup>  
NUTMEG 1 1/2-oz. 49<sup>c</sup> PUMPKIN PIE Spice - 1 1/4-oz. 29<sup>c</sup>  
SAGE 1-oz. 19<sup>c</sup> PARSLEY FLAKES 1-oz. 49<sup>c</sup>  
GINGER 11/8-oz. 21<sup>c</sup> PURE VANILLA 2-oz. 49<sup>c</sup>  
CLOVES 1 1/2-oz. 27<sup>c</sup> Ass't FOOD COLOR 4-Pack 29<sup>c</sup>  
Poultry Seasoning 7/8-oz. 17<sup>c</sup> CAKE DECOR 2-oz. 19<sup>c</sup>

U.S.D.A. CHOICE Fully Trimmed DELUXE T-BONE  
**STEAK** 98<sup>c</sup> lb.  
USDA Choice Porterhouse **STEAK** \$105 lb.  
Boneless Top Sirloin **STEAK** \$129 lb.

**STEAK SALE**  
USDA Choice **CUBE STEAK** 95<sup>c</sup> lb.  
USDA Choice **RUMP ROAST** 69<sup>c</sup> lb.  
USDA Choice Boneless **RUMP ROAST** 79<sup>c</sup> lb.  
BONELESS CHUNKS of BEEF FOR Fresh, Extra Lean **GROUND ROUND** 69<sup>c</sup> lb.  
BEEF STEW 69<sup>c</sup> lb.

Light Your Fireplace for Christmas RESTO. **LOGS** 59<sup>c</sup>

NESTLE'S For Making Toll House Cookies Semi-Sweet **CHOCOLATE MORSELS** Regular 25<sup>c</sup> 6-oz. Cello Pkg. 17<sup>c</sup>

Springfield GOLDEN (Sweet Potato) **YAMS** Big 2 1/2 Can 1-lb. 13-oz. 25<sup>c</sup>

Springfield **GOLDEN (Sweet Potato) YAMS** 25<sup>c</sup>

KITCHEN FRESH **TWIN PAK POTATO CHIPS** Regular 59<sup>c</sup> Twin Pak 59<sup>c</sup> Size 39<sup>c</sup>

Van de Kamp's RED TULIP SPECIALS THURS.-SUN. DEC. 19-22  
PUMPKIN PIE 65<sup>c</sup>  
CRANBERRY MUFFINS 33<sup>c</sup>  
CINNAMON COFFEE LOAF 39<sup>c</sup>  
POULTRY DRESSING 14 ozs. 49<sup>c</sup>  
**YUBAN COFFEE** 1-lb. 71<sup>c</sup> 2-lb. Can \$1.39  
YUBAN INSTANT 5-oz., 95<sup>c</sup> 9-oz. \$1.59

Chicken SOUP 10<sup>c</sup> Chicken of Sea, 8 1/2-oz. CHUNK TUNA 3 for \$1 Sunshine Hydrex COOKIES, 15-oz. 49<sup>c</sup> Scott-200 Sheet PAPER TOWELS 32<sup>c</sup> Soft Weave-2 Pack TOILET TISSUE 25<sup>c</sup> Russettes Frozen HASH BROWNS 2 12-oz. Pkgs. 33<sup>c</sup> Thorofed Quality DOG FOOD 7 tall cans \$1.00 Coronet Frozen ONION RINGS Regular 5-oz. Pkg. 29<sup>c</sup> CUT CORN 2/43<sup>c</sup> FRENCH BEANS 2/53<sup>c</sup> CUT BEANS 2/53<sup>c</sup> MELON BALLS, 16-oz. 41<sup>c</sup> STRAWBERRIES 16-oz. 53<sup>c</sup> STRAWBERRIES 16-oz. 53<sup>c</sup> MIXED FRUIT, 12-oz. 41<sup>c</sup> BIRDS EYE FROZEN FOODS PEAS, 10-oz. Pkg. 2/29<sup>c</sup> French Green Beans with Mushrooms 39<sup>c</sup> Fordhook Limas with Tomatoes, 10-oz. 39<sup>c</sup> Fordhook Limas with Cheese, 9-oz. 49<sup>c</sup> Green Peas with Mushrooms 39<sup>c</sup> French Green Beans with Almonds 35<sup>c</sup> Mixed Vegetables with Onion Sauce 39<sup>c</sup>