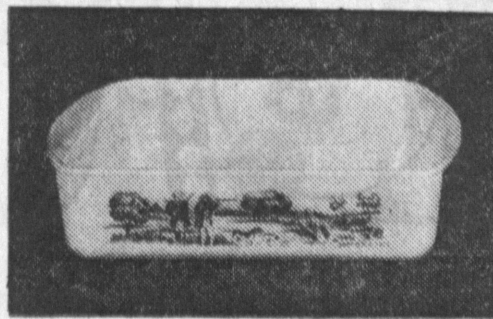




Glasbake Guaranteed against oven-heat breakage
**Currier & Ives
 Ovenware**

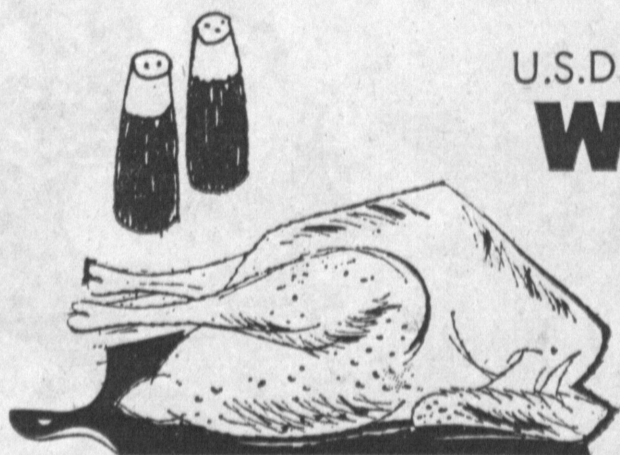
Ideal for baking, serving or storing! Finished in translucent white, each piece has a different famous American scene in blue and carries a lifetime guarantee against breakage due to oven heat. Collect your 6-piece set of Glasbake Ovenware this easy way . . . a piece a week, only 69c with a \$5.00 purchase!

69^c with \$5 purchase



THIS WEEK'S ITEM:
DEC. 12 - 18
**8-inch Square
 Cake Dish, with
 "Woodcock Hunting" Scene**

**RICH TOMATO
 DEL MONTE
 KETCHUP**
 14 oz. bottles **25^c**



U.S.D.A. GRADE "A" FRESH CHICKEN
**WHOLE BODY
 FRYERS**
27^c lb.

HUNT FOR THE BEST
**HUNT'S
 PORK & BEANS**
 jumbo 51 oz. can **33^c**

Eastern Grain-Fed Pork. Ease the holiday strain on your budget with this tender menu-maker!
LOIN END PORK LOIN ROAST 45^c lb.
 Boost your budget and feed 'em well with tender, tasty ribs from Eastern grain-fed porkers!
COUNTRY STYLE SPARE RIBS 49^c lb.
 Eastern Grain-Fed Pork. Try these tender, lean chops for good eating on a limited budget!
CENTER CUT RIB PORK CHOPS 69^c lb.
 Deep smoked for fine flavor, a regular alarm clock at breakfast time! 1 lb. pkg. sliced
LUER IOWA FARM BACON 49^c lb.

FRESH **GROUND BEEF 39^c lb.** EASTERN GRAIN FED FRESH PORK **PORK LOIN ROAST 39^c lb.**
 7-rib portion

Choose good, fresh ground round for hearty, homespun dishes or festive holiday party fare!
FRESH GROUND CHUCK 49^c lb.
 Good, lean, freshly ground beef. A wise choice for a thousand and one different recipes!
FRESH GROUND ROUND 59^c lb.
 Here's a snacking favorite! Pastrami (11 oz. pkg.) or Barbecued Beef (12 oz. pkg.) frozen
BUTCHER BOY PASTRAMI, BEEF 79^c
 Fried shrimp are good for breakfast, dinner or supper! Try some. 8 ounce package, frozen
GORTON'S BREADED SHRIMP 59^c

U.S.D.A. GRADE "A" FRESH CHICKEN
**CUT UP OR
 QUARTERED FRYERS**
33^c lb.

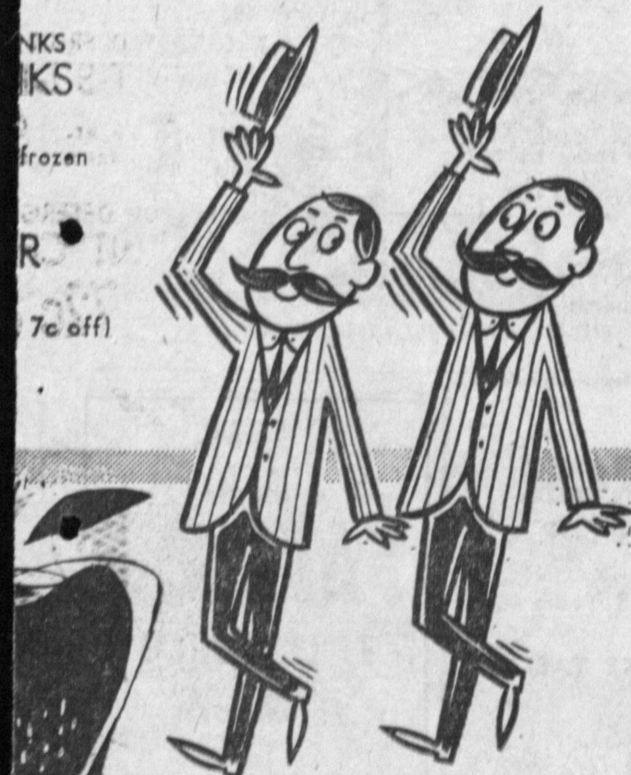
U.S.D.A. Grade "A" Fresh. Buy 'em, fry 'em and freeze 'em for spur-of-the-moment snacks!
CHICKEN LEGS & THIGHS 49^c lb.
 U.S.D.A. Grade "A" Fresh. Tender, white chicken meat for elegant, easy-to-prepare casseroles!
CHICKEN BREAST 55^c lb.

DEL AMO
 SHOPPING
 CENTER
 CORNER OF
 HAWTHORNE &
 SEPULVEDA

**MAGIC
 CHEF**



Drink 69^c
 Cucumber Wafers 25^c
 Pitted Olives 25^c
 Mustard 35^c



**Delicious
 Apples**

0^c lb.
 NEW CROP
**DATE
 GIFT PACK**
 10-oz. pitted 59^c
 1 lb. non-pitted



ADMIRING CHEYENNE, mascot of Carson High School, at dedication ceremonies Saturday for Carson Park, 21411 South Orrick Avenue, are (from left) Milton Arthur, of Long Beach, chairman of the County Park and Recreation Commission; Carl Hoffman, president of the Harbor District Chambers of Commerce, of 11322 South Hoover Street; and Supervisor Kenneth Hahn, who served as dedicatory officer on behalf of the County. More than 300 persons attended the dedication ceremonies.

New Ideas for Christmas Trees

Thousands of Californians in the past few years have been making annual treks to the countryside to visit that relatively recent phenomenon — the Christmas Tree Farm. The advantages are obvious: They not only have a fine outing in the country, but they can choose and cut a tree that is far fresher than anything to be found on a lot.

Better Way

There is still a better way, however, as countless gardeners have been discovering in recent years — growing your own. We haven't any statistics on the tremendous increase in do-it-yourself Christmas Trees over the past decade, but the California Association of Nurserymen reports that it is phenomenal. More and more families discover each year just how nice it can be to have a living tree in the living room at Christmas time.

Living Trees

You can buy living Christmas Trees for only slightly more than it costs to buy comparably sized trees on a lot. And as years go by, you have the same tree, slightly larger, at no extra cost. Talk about bargains.

In California, the living Christmas Tree is sold for either indoor or outdoor use. In each case, you can keep the tree in a container and for outdoor use, of course, you can plant it in the ground, though such treatment often results in faster growth than we might desire for decorative purposes. Many prefer to keep their outdoor trees in tubs and to leave them on the front porch, come the Yule season.

Kinds

What kind of tree is best for indoor or outdoor use in California? The Deodar Cedar, traditionally known as the "California Christmas Tree," is most popular for outdoor use, and is also of some use indoors. This gray-green, quick growing tree is seen extensively in the southern part of the state and to a lesser extent in the northern counties. It makes a symmetrical specimen tree and unless you contain its roots, a very large specimen, at that.

Spruce

For indoor use especially, the spruce is becoming ever more popular. This short-needle conifer is quite symmetrical, a good deep green

and slow growing. You can keep it in a tub for years. Related, but unlike the Norway Spruce in appearance is the Colorado Spruce. You cannot mistake this one. It's blue, and that's all there is to it. Another spruce worth looking at is the Dwarf Alberta Spruce, very compact and very symmetrical in its conical shape.

In the pine family, are several for use indoors or out. We like the bushy, long-needle Monterey Pine, specimens of which are commonly seen in the wilds of our coastal ranges from the Monterey area on north to San Francisco Bay and its surrounding countryside. There is something ruggedly wild about this native. As the years pass, it loses its baby fat and becomes too tree-like for indoor use, but for the several years before this happens, it makes a truly fine tree for the living room.

Others

There are other pines, too. C.A.N. members recommend the Scots Pine, a rapidly forming tree of good shape and color. Its needles are shorter than those of the Monterey Pine and its branches are dense, which is what most Christmas Tree shoppers look for. Aleppo Pine is another with good promise in our climate. Native to the Mediterranean area, it is especially drought resistant. It needs some pruning to develop a true conical form, but the needles are dense, which gives you a good starting point.

If you'd like to start a tree farm of your own, try planting three or four of your favorite living Christmas Trees. Select varying sizes from small to medium height. Each year you can cut the biggest one, leaving about two of the lower branches so that a new top will sprout. Every three or four years, a new top will sprout from the tree you cut and in the meantime, you will be cutting the largest of those ready for the living room. Since they never get too big, this method is entirely feasible for the city garden, and well worth trying.

To buy, sell or trade use The Press Classified Ads for quick results. DA 5-1515.



FOR FAST, EFFICIENT SERVICE

- * STEAMSHIP
- * TOURS
- * CRUISES

**SPACE AGE
 TRAVEL**

... is THE place
 21770 HAWTHORNE BLVD. • TORRANCE
 (Next to Jody's Restaurant) FR 1-1277