

10-OZ. PACKAGE
BISQUICK

37^c

KERN'S 46-OZ. TOMATO
JUICE

5 \$**1**^c
FOR

LARGE AA
EGGS

39^c
DOZ.

IMPERIAL DINERS
TV DINNERS

29^c
LB.

SPRING

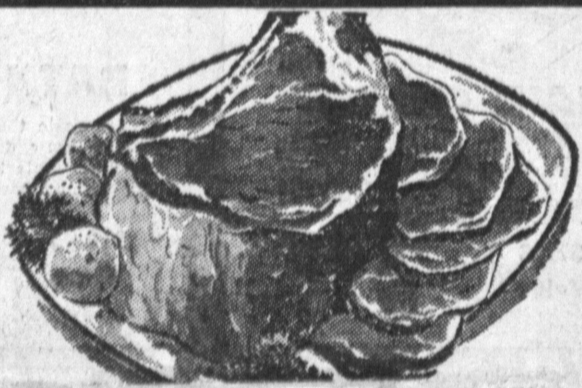
**
MUCH!

COMPARE!



U.S.D.A. "CHOICE"
ROAST

37^c
LB.

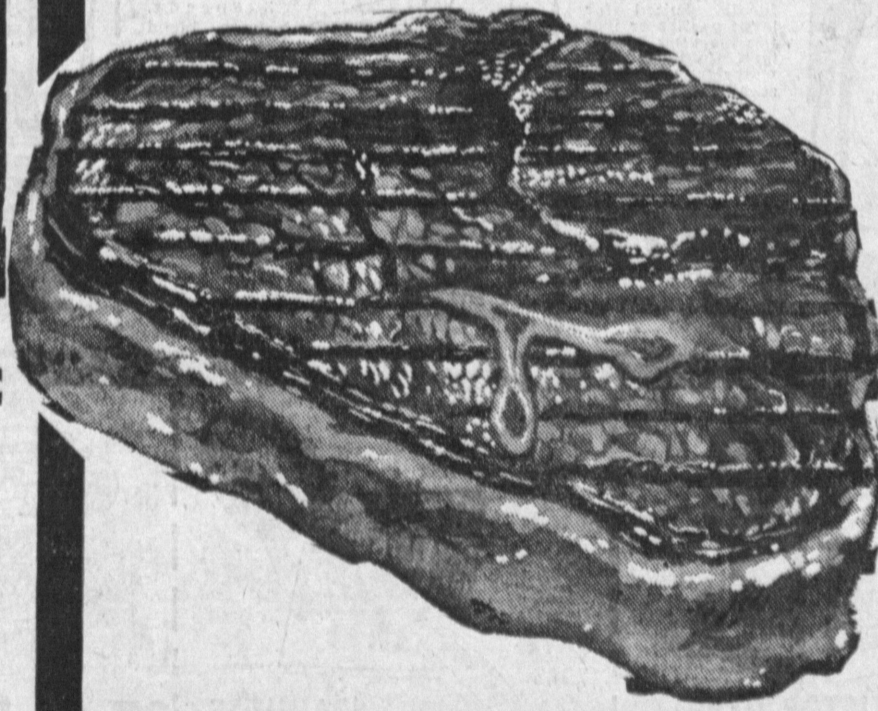


U.S.D.A. "CHOICE"
PRIME RIB

69^c
LB.

**SALE OF FINEST
USDA
CHOICE
TENDER!
DELICIOUS!**

CHUCK STEAKS



37^c
LB.

**FEZER
BEEF
BUYS**

WRAPPED FREE!

39^c
lb
49^c
lb
59^c
lb
69^c
lb
89^c
lb
59^c
lb

GROUND FRESH DAILY
Ground BEEF **3**^{LB} **99**^c

LEAN AND TENDER
STEW BEEF **69**^c
lb

TASTY AND DELICIOUS
PICNICS **29**^c
lb



**FARMER JOHN
BACON**

49^c
LB.

U.S.D.A. GRADED
"CHOICE"
**O-BONE
SWISS
STEAK**

59^c
LB.

U.S.D.A. "CHOICE"
**BONELESS
STEAKS**

- CLUB
- CUBE
- Breakfast

YOUR
CHOICE

89^c
LB.

U.S.D.A. "CHOICE"
**BONELESS
ROASTS**

ROLLED
CHUCK
OR
ROLLED
CLOD

69^c
LB.

LEONARDS

EL SEGUNDO
600 N. SEPULVEDA
(3 BLKS. S. OF INTERNATIONAL AIRPORT)

TORRANCE
25405 CRENSHAW
(CRENSHAW at PACIFIC COAST HWY.)

GARDEN GROVE
12891 HARBOR BL.
(3 MILES S. OF DISNEYLAND)