



CARL D'AMBROSI

President Carl's Motor Co., Inc. has been serving the Harbor Area for the past 30 years.

CARL'S MOTOR CO., INC.

1200 N. AVALON BLVD.

WILMINGTON

TE 5-3131 or SP 5-1897

PLYMOUTH VALIANT
CHRYSLER IMPERIAL

SALES & SERVICE
AUTHORIZED FACTORY DIRECT DEALER

BRAND NEW

CHRYSLER
NEWPORT 4-DOOR SEDAN



Torqueflite, power steering, radio, heater, tinted windshield, whitewalls, wheel covers.

\$3099

MOVE UP TO
CHRYSLER

AUTHORIZED DEALER  CHRYSLER
MOTORS CORPORATION

Carl says: "I'd like to invite everyone to come over and test drive the beautiful line of 1964 Chrysler Corporation products . . . Imperial, Chrysler, Plymouth & Valiant and remember they are all backed by the strongest guarantee in automotive history. Yes, 5 years or 50,000 miles! Sounds terrific? Look how easy it is to maintain:

- I. Change oil every 4,000 miles or every 90 days (whichever comes first).
- II. Change oil filter every other oil change.
- III. Clean air cleaner every six months and replace every 2 years.

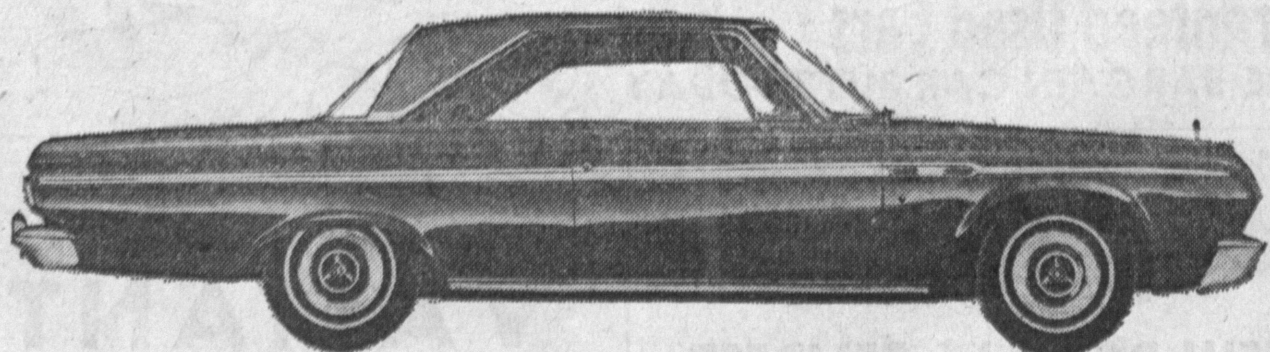
So come on in now and let us demonstrate the most beautiful and best engineered car in America today.

BE SMART—MAKE A CHANGE



TRY IMPERIAL THIS YEAR

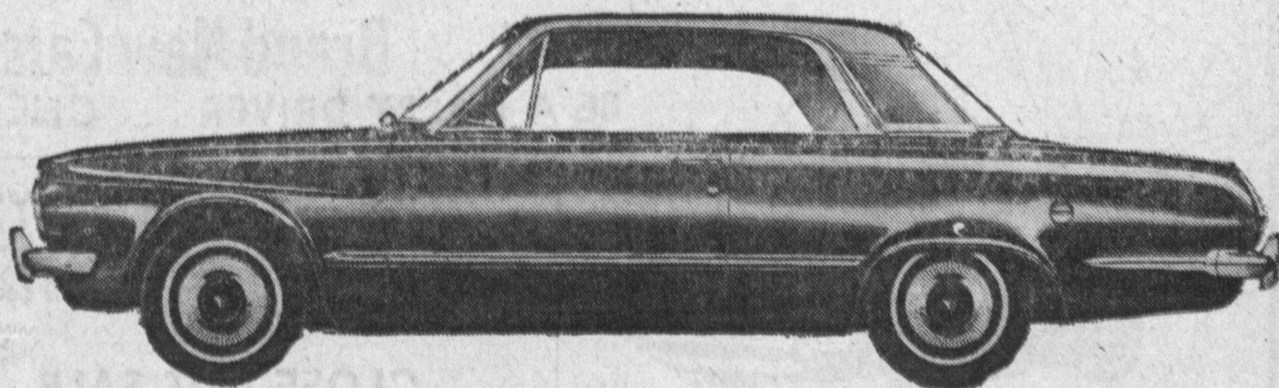
'GET UP AND GO PLYMOUTH'



1964 PLYMOUTH

AS LOW AS **\$1999**

BEST ALL AROUND COMPACT



1964 VALIANT

AS LOW AS **\$1775**

NEW CAR TRADE-INS

'62 NEW YORKER 2-Dr. H-Top V-8. Auto., radio, p/s, p/b, whitewalls. \$2599	'60 IMPERIAL Auto, p/steering, brakes, seats, windows, door locks, factory air. Crown 4-Door. \$2195	'60 CORVAIR 700 Cpe. Automatic, radio, heater, 29,000 actual miles. \$949	'60 CATALINA Spt. Cpe. Automatic, p-strng, brakes, seats, radio & heater. \$1599	200 CARS TO CHOOSE FROM!! CALL TE 5-3131	'58 CHEVY Bel Air 4-Dr. Sedan. P-Glide, p-strng, radio & heater. \$899	'61 FORD Galaxie 2-Dr. HT. P-strng, brakes, Cruiso. Trans. \$1699
'62 NEWPORT 9-Pass. Wag. P/steering, brakes, tailgate window, radio, heater. \$2799	100% FINANCING O. A. C.	'61 LANCER Wagon, 6 Pass. Stick, radio & heater. Sharp. \$1049	'59 RAMBLER 6 Pass. Wagon. 6 cyl. Automatic, radio, heater, wsw tires. \$899	'59 M.G. Roadster, Extra Sharp. Radio & heater. \$999	'59 IMPALA Conv. Radio, heater, p-Glide, wsw tires. \$999	NO DOWN PAYMENT — 100% FINANCING O.A.C.
'60 PLYMOUTH FURY Automatic, power steer., brakes, seats, windows, radio, wsw tires. \$699	'62 BUICK SPECIAL 4-Dr., auto, V-8 eng., P-strng, radio, heater. Sharp. \$1999	'60 BUICK Electra, 4-Dr. HT. Auto., p-strng, brakes, radio, heater. \$1499	'60 RAMBLER Ambassador, V-8 Eng. Automatic, 6 pass wag. p-strng, brakes. \$1399	'59 DODGE Coronet 4-Dr. Sedan. Automatic, p-strng, radio & heater. \$929	EXPERT FINANCE COUNSELORS ON DUTY 9-9 DAILY	'62 IMPERIAL Crown 4-Door. Full power, factory air. Like new. \$3599

OPEN EVENINGS & WEEKENDS TILL 9:00