

# AL ORTALE RAMBLER—CONTINUES FOR 2nd BIG WEEK

# SPECIAL SALE!!

## ON '63 CLASSIC '660' SEDANS As Low As \$1895

SOLD ON A FIRST COME, FIRST SERVED BASIS

We are replacing all the '63 Rambler Classics with new '64's in the Driver Education Program of the Torrance Unified School District. These low mileage cars have never been licensed. Most are fully equipped and kept in perfect mechanical condition. Each carries a transferrable New Car Warranty.

ALSO

## '63 'BRASS HAT' EXECUTIVE CARS

OVER **\$800<sup>00</sup>** SAVINGS

EXAMPLES:

<p>'63 AMBASSADOR "990" SEDAN White. Full power, air conditioning, radio, heater, bucket seats, whitewall tires, etc. Stock No. 6C432.</p> <p><b>SAVE \$805<sup>00</sup></b></p>	<p>'63 CLASSIC "660" WAGON Green. Automatic, radio, heater, individual seats, head-rests, etc. Stock No. 1C175.</p> <p><b>SAVE \$714<sup>00</sup></b></p>	<p>'63 CLASSIC "770" SEDAN 2-Tone green. V-8, automatic, power steering, radio, heater, individual seats, light package, etc. Stock No. 1C172.</p> <p><b>SAVE \$610<sup>00</sup></b></p>	<p>'63 AMERICAN "440" SEDAN Gold and maroon. Automatic, radio, heater, bucket seats, Solex windshield, whitewalls. Stock No. 123C99.</p> <p><b>SAVE \$600<sup>00</sup></b></p>
--	---	--	--

✓✓✓ CHECK THESE *Select* NEW TRADE-INS ✓✓✓

'58 PONTIAC BONNEVILLE HARDTOP Factory air cond., power steering & brakes, R&H, auto. Just like new. <b>\$1095</b>	'61 CHEVROLET CORVAIR GREENBRIER WAGON Automatic, radio and heater. Like new <b>\$1395</b>	'61 CHEVROLET V8 IMPALA COUPE Automatic, power steering, radio & heater <b>\$1995</b>
'62 CHEVROLET V-8 IMPALA COUPE Automatic, radio, heater, low mileage <b>\$2295</b>	'59 RAMBLER AMERICAN 2-DOOR Automatic, radio & heater. Original. <b>\$895</b>	'58 RAMBLER AMERICAN 2-DOOR Automatic, radio & heater. Hard to find model. <b>\$695</b>
'58 VOLKSWAGEN 2-DOOR New finish. Runs perfect <b>\$895</b>	'59 FORD 3/4 TON PICKUP & CAMPER Fully equipped including cab to camper intercom <b>\$1395</b>	'57 INTERNATIONAL TRAVELLALL Stick shift, heater, new paint <b>\$895</b>

SCORES MORE TO CHOOSE FROM

TORRANCE EXCLUSIVE  
WE ACCEPT ALL MAJOR CREDIT AND  
OIL COMPANY CREDIT CARDS

# AL ORTALE RAMBLER

AL ORTALE RAMBLER  
Your South Bay International-Scout  
Truck Headquarters  
All Models on Display



OPEN 7 DAYS 'TIL 9 P.M.  
**1885 TORRANCE BLVD.**  
2 BLOCKS OFF WESTERN AVENUE  
FA 8-9222

"Reliability - Integrity - Confidence"  
Two Locations to Serve You  
**TORRANCE**  
("DEALS YOU CAN'T REFUSE")

OPEN 7 DAYS 'TIL 9 P.M.  
**20611 HAWTHORNE BLVD.**  
1/2 MILE NORTH OF TORRANCE BLVD.  
FR 1-1244

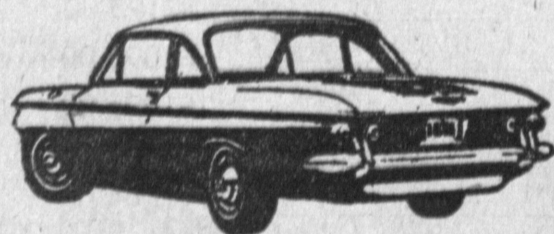


## Now Is Your Opportunity To Make a Good Car Buy

## Autumn Round-Up of Bargain Buys

Brand New Cars or Guaranteed Used Cars

BE A HAPPY DRIVER . . . CHECK THESE BARGAIN CAR BUYS TODAY



All '63 Models Must Be Sold  
**SAVE \$ \$ \$**

### GLEDHILL CHEVROLET

304 East Anaheim Wilmington  
TE 4-3491—Open Evenings and Sunday

COMETS - MONTEREYS  
METEORS - CONTINENTALS

CLOSE OUT SALE  
Save Up to \$1200

On Some Models

### CABRILLO MOTORS

1850 S. Pacific Ave. San Pedro  
TE 3-3577 Open Eves. and Sun.



### NEW PONTIAC-TEMPEST

Trade-Ins at  
**LOW, LOW PRICES**  
**FRANK REIMAN**

PONTIAC CENTER  
412 West Anaheim Wilmington  
Open Evenings and Sundays

NEW 1963

## VALIANT

**\$1742<sup>79</sup>**

PLUS TAX, LICENSE and Freight

### CARL'S MOTORS

1200 N. Avalon Wilmington  
TE 5-3131 Open Eves. 'Til 9 p.m.

**BIG**  
**NEW AND USED CAR**  
**SALE**

NOW IN PROGRESS

### VEL'S FORD

20900 Hawthorne Blvd.  
Torrance 370-3636

**BIG -:- BIG**  
**SAVINGS**

ON ALL  
NEW AND EXECUTIVE  
'63 RAMBLERS  
5% FINANCING AVAILABLE  
48 MONTH TERMS

### AL ORTALE RAMBLER

1885 TORRANCE BLVD. FA 8-9222  
20611 HAWTHORNE BLVD. FR 1-1244



### RAMBLERS—WE HAVE 'EM

'59, '60 and '61 Sedans and Wagons

Low as **\$695** Full Price

### HUNT RAMBLER

402-500 West Anaheim Wilmington  
TE 5-6646—TE 4-6383  
Open Evenings and Sunday

### AL ORTALE RAMBLER

SERVICE SPECIAL

FRONT END ALIGNMENT	\$8.90
Finest front end equipment—factory trained specialist	
ROTATE TIRES	\$2.50
Save wear and tear on tires	
PACK REAR AXLE BEARINGS	\$10.45
FRONT	\$2.50

Service Specials Good Thru October 31st

### AL ORTALE RAMBLER

1885 Torrance Blvd. FA 8-9222

First Out—First Read—Now Wednesday & Friday