

ARRAYS

AT

BETTER FOOD
MARKETS

DIET
GOOD
8 \$1
TALL CANS

WHITE MEAT
SOLID PACK
ALBACORE
TUNA

FANCY
GEM OF THE SEA BRAND

4 \$1
NO. 1/2 CANS



C. H. B.
MAYONNAISE
SALAD DRESSING

New!

Not a Pint!
Not a Quart!
But a Quart
and a pint!
IN WIDE-MOUTH
RE-USABLE JAR

JUMBO
48-OZ.
JAR

59^c

gfield
Sale

NS 7	303 Cans	\$1	
...	7	303 Cans	\$1
DARK RED	8	303 Cans	\$1
,	10	300 Cans	\$1
	8	303 Cans	\$1
TAIL..	5	NO. 303 CANS	\$1
S.....	5	NO. 303 CANS	\$1
LVES			
THES...	4	NO. 2 1/2 CANS	\$1

SPRECKELS
SUGAR
granulated

SAVE 8c
Spreckels

SUGAR

5 59^c
LB. BAG

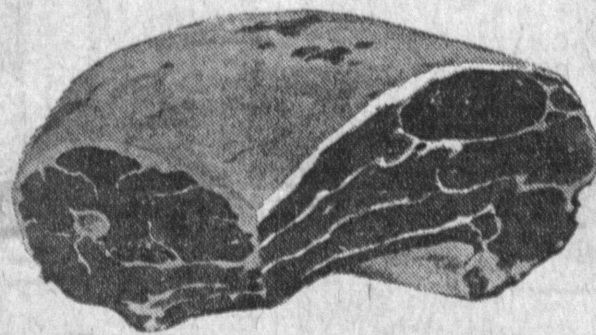
GENERAL MILLS
CEREALS Your Choice

WHEATIES	12 1/2-OZ.	29^c
CHEERIOS	10 1/2-OZ.	
TRIX	8 1/2-OZ.	
TWINKLES	9 1/2-OZ.	

MORE MEAT PER DOLLAR

LAMB ROAST

U.S. "CHOICE" SHOULDER CUT



SHOULDER CHOPS 59^c
ROUND BONE CHOPS 69^c
LAMB BREAST... 10^c

29^c

U.S. CHOICE or TABLE PRIDE
T-BONE or CLUB STEAKS

99^c

U.S. CHOICE or TABLE PRIDE
PORTERHOUSE .. \$1⁰⁹^c
U.S. CHOICE or TABLE PRIDE
TOP SIRLOIN ... \$1²⁹^c

BONELESS
ROUND STEAK .. 79^c
BONELESS
RUMP ROAST... 69^c

RABBITS

FRESH FRYERS Whole Body **49^c** lb

FULLY COOKED HAM

LUER SHANK PARTS TO BAKE **35^c** LB

BUTT HALF **49^c** lb
CENTER SLICES ... **98^c** lb

BACON

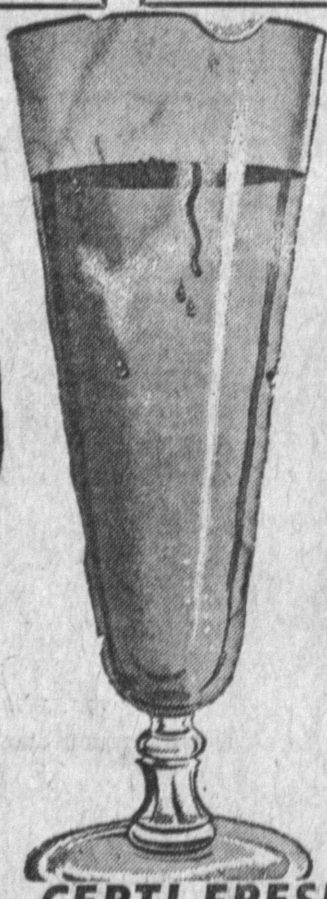
LUER IOWA FARM LB. PKG. **45^c**

SHRIMP

COOKED, PEELED 6-oz. **49^c** LARGE WHITE **\$1²⁹** lb.

Swift or Tyson's/Grade "A"/Rock Cornish
GAME HENS **49^c** lb
FARMER JOHN
PORK LINKS 8-oz. Pkg. **23^c**

SAVE 20c
BUTANT
ISSUE
\$1
LARGE 400-CT. BOXES



DODGER BEER

6 12-oz. Cans **69^c**

CASE OF 24 **\$2⁷⁵**

CERTI-FRESH FROZEN SEAFOOD

SKINLESS HALIBUT	1-lb. 98c	BREADED FILLETSlb. 55c
BREADED SOLE FISH10-oz. 59c	SHRIMP PERCH8-oz. 67c
STICKS14-oz. 69c	STICKS8-oz. 39c

GRANNY GOOSE PRETZELS

FEATURED AT BETTER FOOD

NER
OD
ETS

4466 TWEEDY BLVD.
South Gate
OPEN DAILY
9 A.M. to 10 P.M.

223rd ST. at AVALON
Carson - Torrance
OPEN DAILY
8 A.M. to 10 P.M.

S. WESTERN at SLAUSON
Los Angeles
9 A.M. to MIDNIGHT
SUNDAY 9 to 9

5305 TORRANCE BOULEVARD
Torrance
OPEN DAILY
9 A.M. to MIDNIGHT

4317 BEVERLY BLVD.
Los Angeles
OPEN DAILY
9 A.M. to 10 P.M.

130 S. CENTRAL AVE.
Glendale
OPEN DAILY
9 A.M. to 10 P.M.

7
BIG SALE DAYS
THURSDAY THRU WEDNESDAY
AUGUST 1 TO 7, 1963