



LUCY PALERMINO, newly elected president, District 21 of the California Nurses Assn., for 1963-64. She is director, nursing services, at Harbor General Hospital, Torrance.

### NURSE DIRECTOR TO HEAD GROUP

Approximately 100 nurses comprising District 21 of the California Nurses Assn. have elected Miss Lucy Palermino of Harbor General Hospital president for 1963-64. Miss Palermino, director, nursing service, at HGH, Torrance, succeeds Mrs. Minnetta Dorough, HGH nursing instructor, who made the announcement. Other officers are Mrs. Maureen Skiba, school nurse, Redondo Beach, first vice president; Miss Grace Mizumoto, HGH instructor, 2nd vice president; Mrs. Severina Smith, Gardena, HGH assistant head nurse, secretary; Mrs. Violet Geres, Los Angeles, nursing instructor, Harbor College, treasurer. District 21's members are primarily from Southwest county area communities.

### 15 Area Nurses Graduated From Harbor College Class

Fifteen students from Harbor College received the Maltese Cross pin of a vocational nurse in a graduation ceremony Friday night at the Ocean View Baptist Church San Pedro. Still in their future is the state licensing examination all vocational nurses must take. Behind them are at least three semesters of study and practical experience at Harbor College, Harbor General Hospital, Kaiser Hospital and San Pedro Community Hospital. Principal speaker was Marian Stewart, director of nurses at Harbor Kaiser Hospital. The invocation and benediction were delivered by the Rev. John Penner, Chaplain of Harbor General Hospital. Milagros Moreta was the student speaker and Doris Holt recited the vocational nurses' pledge. Renee Armstrong sang two vocal selections. The certification and capping ceremony was conducted by college president Wendell C. Black and Roberta Lindbergh, nursing division chairman. Most of the graduates will work in local hospitals, doctors' offices and clinics. One of the nurses, Mrs. Ruth Williams, has made application for Peace Corps duty in Peru along with her husband. Among the graduates, Mrs. Frances Fisher was named Nurse of the Year, and Shirley Miles, Mrs. Jean Lum and Mrs. Kay Shelton received scholarship awards. In another program the newest group of nursing students will receive their caps in a capping ceremony Wednesday at 1 p.m. in the Campus Center on the Wilmington campus. The students receive their caps after completing their first semester of study. Norman Jacot, of the Harbor College faculty will be principal speaker at the capping program. Graduating nurses include Kay Shelton, Torrance; Marianne Lutheringer, Lomita; Lulu Fink and Ruth Williams, Harbor City; Lolita Sampang, Mary Smith and Muriel Watkins, Wilmington; Jean Lum and Genevieve Vickers, Redondo Beach, plus four from San Pedro and one from Gardena.



LAST NOTATION—Mrs. Kay Shelton (seated), Harbor College vocational nursing student from Torrance closes notebook at end of semester as fellow students Millie Murata (left) of Gardena and Marianne Lutheringer of Lomita share her relief. Graduation exercises for the vocational nurses were held Friday at Ocean View Baptist Church in San Pedro.

Supervisor Burton W. Chace requested that the \$8,500 allocation be made available from the county's highways-through-cities fund.

### PV Drive Surfacing Funds Approved

A portion of Palos Verdes Drive North near Rolling Hills Road in the city of Rolling Hills Estates will be resurfaced under an appropriation approved by the board of supervisors. Supervisor Burton W. Chace requested that the \$8,500 allocation be made available from the county's highways-through-cities fund.

Use classified, DA 5-1515

#### LEGAL NOTICES

FICTITIOUS NAME CERTIFICATE OF BUSINESS The undersigned does certify he is conducting a business at 2836 S. Western Avenue, Lomita, California, under the fictitious firm name of DEL. MAR DRAPERIES and that said firm is composed of the following persons, whose name in full and place of residence is as follows: E. G. VAL GARDSON, 26308 S. Western Avenue, Lomita, California. Dated June 5, 1963. E. G. VAL GARDSON, State of California, Los Angeles County. On June 5, 1963, before me, a Notary Public in and for said State, personally appeared E. G. VAL GARDSON known to me to be the person whose name is subscribed to the within instrument and acknowledged he executed the same. (SEAL) RUTH H. PETERSON, MY commission expires June 6, 1965. Torrance Press, Sunday, June 9, 1963.

### Summer Remedial Reading Workshops Are Scheduled

Guidance Associates is presently accepting applications for enrollment in the summer remedial reading workshop to start June 24. The workshop is conducted for students who are deficient in reading. Enrollment may be for the four, six or nine week series. As in the past, there will be a limited number of partial scholarships available. The scholarships are given through the Alondra Park Optimist Boys' Work Projects and are assigned on need and by recommendation of the student's school principal or teacher. All members of the workshop staff are California credentialed teachers with experience in teaching remedial reading. They are regular members of the Guidance Associates' staff. The total program is under the direction of W. J. Brodsty, a certified school psychologist. Purpose of the summer remedial reading workshop is to make reading a 12-month program. Many poor readers are just beginning to make gains in reading when school closes for the summer vacation. The poor reader who is given an opportunity to build up his reading skills during the summer months will return to school at vacation's end with a minimum need for remedial help. The Guidance Associates' reading workshop will be geared to help this reader. For further information, phone DA 3-8131, or write Guidance Associates at 1128 W. Gardena Blvd., Gardena.

### Rosemary DeCamp On Fair Committee

Rosemary de Camp, wife of Judge John Shidler, has been named by Supervisor Burton W. Chace as a member of the Long Beach World's Fair Advisory Committee of 100. Mrs. Shidler, 317 Camino de Las Colinas, Hollywood Riviera, was named to the committee post vacated by recent death of Thomas Fox of Santa Monica.



MRS. ROBERT (Frances) Fisher, left, graduating from Harbor College-Harbor General Hospital vocational nursing course, was selected "Vocational Nurse of the Year" by the college. She was also president of Epsilon Nu Sigma, nurses club at Harbor College. She relinquished gavel to Mrs. Herbert (Verna) Asbury, right, who will graduate in February, 1964.

## Hannah's Harpoons

BY HANNAH SAMPSON

Among the many hoaxes perpetrated upon the housewife-as-consumer is the so-called "lifetime" guarantee that comes with dozens of household articles. Recently, in the wives' corner at a house party, we were complaining about this flim-flammery.

Of the four in the group, one bought the product and when it failed to live up to its promise, threw it away and got another. A second threw the thing away and made a mental note not to buy THAT company's product again. It was the method of the third gal that intrigued, and we can all benefit from it.

The object in question was an ironing board cover, with a literal "lifetime" guarantee. The cover was worn through in less than three months. ("It affected me like the action of a Voodoo Doll: I half-expected to drop dead the minute the thing actually wore out!")

#### USABLE BRAINS

But this gal has lots of usable brains and she keeps all of the guarantees in a special drawer in her desk. When the "lifetime" object wears out in the lifetime of a butterfly, she mails it back to the company and gets a replacement. (The guarantee for this particular item is printed right on the plastic sack.) Then, when it wears out, she mails it back again, and again, and . . . but you get the idea. This is what we may call a lifetime guarantee. These companies usually live up to their replacement offers. They simply know that most people don't believe them, and won't bother to hold them to their promise.

There is a constant yammering about the modern housewife who has all of these gadgets and never had it so good, and who can't do a blessed thing besides open cans or defrost frozen potables.

Nonsense! As far back as Longfellow's time there were women who couldn't boil an egg or wash a dish, and what is more, they couldn't be bribed to learn how.

#### DOMESTIC TYPES?

Then as now there were women who got little out of the domesticity of the average household, while others reveled in its creativity.

Now, as then, there are those who find the meaning of life in the small tasks that go to make up their daily world, while some prefer the "outside" world.

Women are still the same and all of this viewing with alarm is merely a good way of earning a living for those who compile the statistics.

In the tiny microcosm that is my immediate neighborhood, (comprising 24 families) two of the gals bake their own bread—from scratch!—regularly; all but one make their own and their children's clothes; one even makes very professional shirts for her husband. And, get this: one embroiders for relaxation and several knit socks and sweaters!

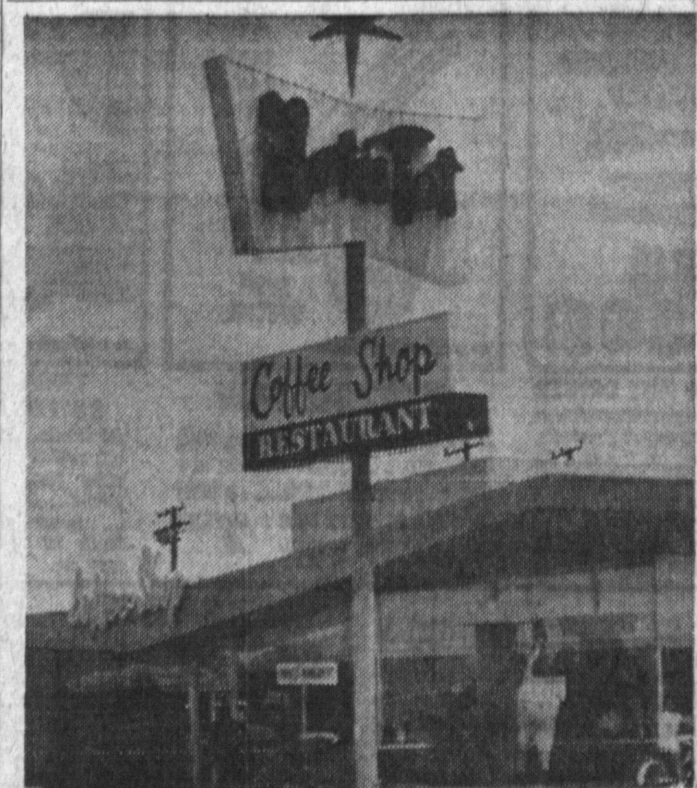
All do gardening of a sort, some more and some less and what matter that the picture hat and flowing batiste gown are replaced by shorts and halter or slacks and shirt.

#### BIND UP WOUNDS

All bind up the wounds of their children, comb and curl their hair, and help beat out the piano lesson while peeling the potatoes.

And, since the predominantly male physician in most cases refuses to make a house call as he did for trivia in another day, why then today's woman is either her own diagnostician, or ambulance service with the family car.

She is feminine, pretty, sensible, and interesting, and with lots of good hot water available, she smells very good indeed!



NEW SPOT is the Hot N' Tot on Crenshaw at Artesia Boulevard, which opened Thursday. —PRESS photo

### NEW SPEED LIMIT FOR NORMANDIE

"A new 45-mile-per-hour speed limit will take effect immediately along Normandie Ave. for 3,600 feet north of Lomita Blvd.," Supervisor Burton W. Chace said today.

The speed limit was established by the board of supervisors on the recommendation of the county highway safety commission. Signs will be posted within five days by the Los Angeles County Road Dept.

Supervisor Chace said the configuration of this portion of Normandie Ave., which includes two curves, made the new speed limit advisable.

Normandie Ave. is a county master plan highway, and, according to latest road department traffic counts, carries a flow of approximately 5,000 vehicles per day along the segment governed by the new speed limit.

Use classified, DA 5-1515

announcing new credit terms

## DENTAL PLATES

REPAIRS WHILE YOU WAIT  
COMPLETE DENTAL SERVICE  
IN ONE OFFICE

EASY CREDIT TERMS

UP TO 36 MONTHS TO PAY!

Difficult Cases Welcomed

PENSIONERS WELCOME

Se Habla Espanol

ALWAYS LOW PRICES

PHONE 8-0250

NO APPOINTMENT NECESSARY

### PENTATHOL

FOR SLEEP

- FOR EXTRACTATIONS
- FOR FILINGS • FOR PLATES
- ALSO
- X-RAYS
- PYORRHEA TREATED
- ROOFLESS DENTURES
- DENTAL PLATES RELINED
- TEETH EXTRACTED—PLATES Inserted Same Day
- Also Dentistry for Children

**DR. TARR**

TORRANCE FAMILY CREDIT DENTIST

2418 TORRANCE BLVD., TORRANCE  
NEAR CRENSHAW—GROUND FLOOR—MODERN, AIR-CONDITIONED OFFICE

## NEW CAR DIRECTORY

G.M.C. TRUCKS  
OLDSMOBILE - CADILLAC

**CECIL L. THOMAS & SONS**

PACIFIC COAST HWY. AT VERMONT—HARBOR CITY

STUDEBAKER ORegon 8-4005

Dealer Authorized by Studebaker Corporation to Service the Torrance Area

**FRANK H. AFTON CO.**

248 N. MARKET, INGLEWOOD

# Mill Closeout!

ALL NYLON PILE

## 2 50 SQ. YD.

- WITH FOAM PAD ON BACK
- \$4.95 VALUE

No Money Down • 36 Months to Pay  
Use Your Bankamericard • 90 Days Same as Cash

### OTHER SPECIALS

100% CONTINUOUS FILAMENT NYLON PILE

# \$3 95

Sq. Yd.

---

Dupont '501' NYLON

100% CONTINUOUS F ILAMENT NYLON PILE

- 13 ROLL CLOSE OUT
- CHOICE OF COLORS
- 15 YEAR WEAR GUARANTEE

# \$5 95

Value Sq. Yd.

9x12 Rayon Tweed Pile RUGS With Foam Pad on Back 1995	Room Size Remnants 50% Off	ALL WOOL PILE 295 Sq. Yd. Reg. 495	12x15 NYLON PILE RUGS With Foam Pad on Back 4995
Wilton and Axminster Carpet	Reduced 30%		

<b>CARPET CITY LONG BEACH</b> HE 7-2737 1170 E. ANAHEIM	<b>Los Angeles</b> AX 9-5461 5861 S. WESTERN Near Slauson Ave.	<b>San Diego</b> CY 7-1631 610 W. WASHINGTON Mission Hills Area
	<b>West Covina</b> YO 2-3574 628 S. SUNSET 1/2 Blk. E. of City Hall	<b>Anaheim</b> PR 2-7220 709 E. CENTER (Continuation of Lincoln)