

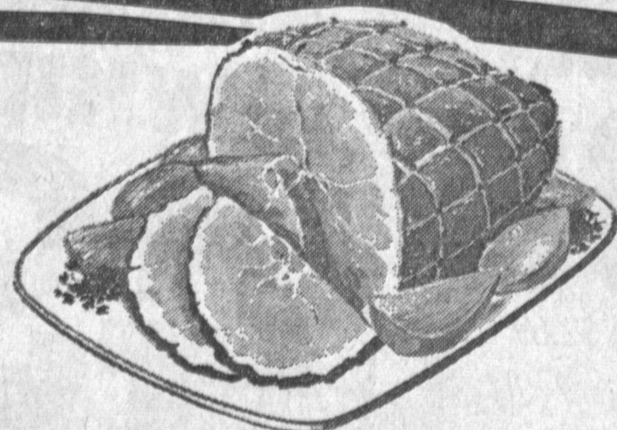
THANKS

FOR YOUR TREMENDOUS RESPONSE
TO LAST WEEK'S CELEBRATION ANNOUNCING THE ...
GRAND OPENING of Our
Supermarket

We were overwhelmed by the response! The crowds were fabulous! We sincerely hope that no one was inconvenienced by the huge crowds. It was our intention to show you, the public, how we intend to merchandise the store. The bargains are just a sample of what is to come. We hope you will be watching our advertising each week for more "special" buys!

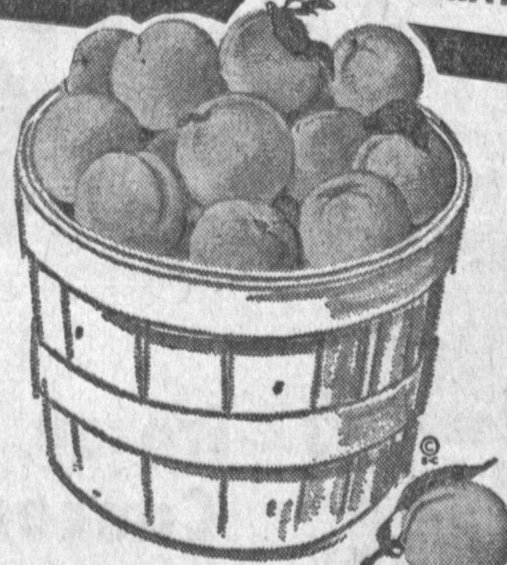
HERE ARE MORE UNBEATABLE FOOD BUYS TO SHOW OUR APPRECIATION

HORMEL
9-lb.
CANNED
HAM



\$5.49

FAMOUS HORMEL
CANNED HAMS



FRESH
SPRINGTIME
PEACHES

TASTY, DELICIOUS
PEACHES AT
THEIR BEST!

2 LBS. FOR 25¢

WIENER or HAMBURGER
BUNS

PACKAGE OF 8

27¢

RIPE—CENTRAL AMERICAN

Bananas 11¢ LB.

ZEE • 40 COUNT
PAPER PLATES

35¢

SPRINGFIELD
ICE CREAM

½ GAL. **49¢**

FRESH—CRISP

Lettuce 10¢

SPRINGFIELD
MAYONNAISE

39¢ QT.

PILLSBURY
CAKE MIXES

25¢

RITZ
CRACKERS

29¢ 1-LB. BOX

KENTUCKY WONDER

GREEN BEANS 2 LBS. FOR 25¢

ZEE 80 COUNT
NAPKINS

9¢ PKG.

GORDON'S
BREAD

\$1.50
LARGE LOAVES FOR

VAN CAMPS • 2½
Pork & Beans

\$1.50
2½ CANS FOR

FOLGERS • M.J.B.
HILLS BROS.
COFFEE

53¢ LB.

WISHBONE
Salad Dressing

8-OZ. BOTTLE **29¢**

NABISCO—VANILLA
WAFERS

1-LB. BOX **29¢**

WILSHIRE—SWEET
CUCUMBER CHIPS

58-OZ. JAR COUNTRY STYLE **59¢**

BEACHNUT—STRAINED
BABY FOOD

12 FOR **99¢**

NU-MAR—1 LB.
OLEO

7 PKGS. FOR **\$1**

LEONARDS

25405 CRENSHAW
PACIFIC COAST HWY. & CRENSHAW
TORRANCE
PAYROLL CHECKS CASHED!!

STORE HOURS
Daily Noon to 9
Sat. & Sun. 10-6
OPEN MEMORIAL DAY 10-6

YOUR LEGISLATOR AT WORK

By VINCENT THOMAS
68th District Assemblyman

One of the most amended measures to emerge from this session as a signed law is an omnibus welfare bill. Because certain of its provisions which are financially important to the state and the counties go into effect immediately, it was signed by the Governor almost before the ink on the final version was dry. In signing, he called it the most important single piece of welfare legislation adopted during his administration.

The bill is largely the outgrowth of two converging forces. The first was liberalization in federal grants to states for welfare purposes. The second was a complete review of California welfare administration made by a Welfare Study Commission established two years ago by law, on which both houses of the Legislature were represented.

Complex of Changes
The bill is a complex of changes in all welfare programs operated by county governments, but financed from state, federal and county funds. It makes important changes in our welfare programs for the aged, blind, needy children, and totally disabled, as well as in that for medical assistance to the aged. Its various provisions go into legal effect at varying dates up to January 1, 1965, so its full impact on operations and costs will not be known for almost two years.

During its movement through our two houses the bill, in addition to having the support of the administration, had that of many welfare-oriented organizations. Organized county officials also favored it, but many counties were opposed, and their representatives voted against it to the end, on the ground that it would increase, not decrease, welfare costs to their property taxpayers. Opponents claimed the bill would benefit urban counties at the expense of rural.

Higher Relief Cost Seen
Proponents readily agreed that enactment of the bill would raise the total cost of relief disbursed in California. They argued, however, that considerable improvement in programs for welfare recipients is needed, that our law should take advantage of liberalizing federal law and regulation, and that reductions in county share of costs would benefit property taxpayers.

Perhaps the best estimates of costs involved were those furnished us by our Legislative Analyst after the bill was last amended. These fixed the total cost of all changes effective during 1963-64 at \$67 million for that fiscal year.

Included in this total would be an increase to all counties of \$28.8 million. However, because the changes would enable counties to transfer many general relief cases, paid in full from county funds, to the joint programs, they would end up with a total net saving of \$21.4 million.

For any full year after all the changes are operative, the total cost was set at \$128.6 million. Added county costs would be \$38.5 million of this, but net county savings because of shifts to the state and federal governments would be \$31.8 million.

Most controversial of the law's provisions was that to open up the program for aid to needy children to those whose parents are unemployed, as well as to those who lack one or both parents.

COMPARE! SAVE!
DRY CLEANING

- PLAIN SLACKS
- JACKETS
- SWEATERS
- SKIRTS
- SHIRTS

39¢ ea.

- PLAIN SUITS
- DRESSES
- COATS
- CAR COATS

79¢

EXPERT LAUNDERING
SHIRTS.. 23c PANTS.. 45c

LEONARDS

25405 CRENSHAW BLVD.
(Corner Crenshaw Blvd. and Pacific Coast Hwy.) Torrance

CUSTOM MADE DRAPERIES
AT BUDGET PRICES

FOR EXAMPLE:
We will make custom-made draperies to cover an area 10 ft. wide x 7 ft. long.

\$29.95 Cash Charge Terms

for ONLY

ANY CUSTOM-SIZE DRAPERIES AT PROPORTIONATELY LOW PRICE

GUARANTEED: FREE:

- 100 Satisfaction
- Greater Savings
- Workmanship for 5 Years.
- Decorator Consultant Will Visit Your Home with Full-Length Samples

24-Hour Phone Service Call
DEL MAR DRAPERIES
DA 6-5440
2836 So. Western Ave. Lomita, California