

Junior Auxiliary Invests

Junior Auxiliary of the Little Company of Mary presented its third annual installation banquet at 8:30 p.m. Tuesday, May 21 in the doctors dining room at the hospital.

Entertainment by the Alpines was followed by presentation of 100 hour pins and investiture of officers.

CLASS SET FOR NEW MEMBERS

Lomita Christian Church minister Joel Rivers is conducting a class for new members, at 4 p.m. Sunday afternoons to prepare people entering church membership.

Classes will include "How to Read the Bible," "A New Life in Christ," "Church Attendance," "The Lord's Supper," "The Indwelling Spirit," "Your Prayer Life," "Your Place in the Church," "You and Your Money," "Going on to Perfection," "The Danger of Apostasy," "A Brief History of the Restoration Movement." A review will conclude the series.

Persons under 12 must be enrolled with an adult.

Use classified. DA 5-1515

ST. LAWRENCE CATHOLIC CHURCH
 MASS
 7, 8, 9, 10, 11:15, 12:15
 Monsignor Collins
 1900 Tulita Avenue
 Redondo Beach
 FR 5-6037



Officers installed were: Pamela Free, president; Jeanette Jordan, vice president; Carole Brown, recording secretary; Jorie Cuninghame, corresponding secretary; Jane Cersh, treasurer; Sharon Peterson, publicity chairman, and Jill Webb, attendance chairman.

The doctor's dining room was decorated in a blue and yellow color scheme.

You Can Earn More Too . . .



In the high paying Beauty Profession at an Award Winning

Flavio Beauty College

TORRANCE
 1978 W. Carson • 320-0404
REDONDO
 2205 Artesia Blvd. • 376-8844
GARDENA
 14816 S. Crenshaw • 329-4191
 Men and Women of All Ages Are Eligible

Student Hairstyling Available
 (Supervised by licensed instructors)
 (All Schools)
 Monday Thru Saturday (Days)
 (Torrance School Only)
 Wednesday, Thurs., Friday (Eves.)

CALIFORNIA ASSOCIATION OF SCHOOLS OF COSMETOLOGY
 Established 1925

WORSHIP AT THE CHURCH OF YOUR CHOICE
 MORE THINGS ARE BROUGHT BY PRAYER THAN THIS WORLD DREAMS OF

BAPTIST

CARSON BAPTIST CHURCH (Southern)—22130 Lucerne Street (Between Wilmington Avenue and Avalon—Just off 223rd), Torrance. Sunday School 10 A.M.—Morning Worship 11 A.M.—Training Union 6:30—Evening Worship 7:30. Wednesday Prayer Service 7:30. Pastor: Kenneth Crisp, Phone TR 5-3585
FIRST BAPTIST CHURCH—Carson at Manuel, Rev. Robert Dehn, Church phone FA 8-5030; 9:15 and 10:45 morning worship; 9:15 nursery through 5th grade; 10:45 Jr. High through Adult Sunday School 6:30 p.m. (Training Unions); 7:00 p.m. Evangelistic service; Wednesday, 7:00 p.m. mid-week service. Nursery care for
DEL AMO SOUTHERN BAPTIST CHURCH—3224 Cabrillo Ave., at Plaza del Amo Torrance. (Permanent location at 226th St. and Ocean Ave., Del Amo Center) Sunday School, 9:45 a.m. Training Union, p.m. Worship Services, 11 a.m. and 7 p.m. Pastor: Daniel B. Weaver, Jr. FR 1-3975
NARBONNE AVENUE SOUTHERN BAPTIST CHURCH 2470 Narbonne Ave. Lomita. DA 6-6027 Church 9:30 a.m., 10:30 a.m., Sunday School 9:45 a.m. every service.

CATHOLIC

ST. CATHERINE LABOURE CHURCH—3844 Redondo Beach Blvd., Torrance. Davis 3-8900. Sunday Masses: 7, 8, 9, 10, 11, 12. Weekday Masses: 6:30 and 8:15. Confessions Saturday: 4:00 to 5:30; 7:30 to 9:00.
ST. LAWRENCE CATHOLIC CHURCH—1900 Tulita Ave., Redondo Beach. Monsignor Daniel P. Collins. Mass 7, 8, 9, 10, 11:15, 12:15. FR 5-6037.

CHURCH OF GOD

SOUTH BAY CHURCH OF GOD—17661 Yukon Ave. Phone 323-9970. Rev. C. L. Tierney, 17615 Yukon, Torrance. First morning service 8:30 a.m.; Sunday school, 9:40 a.m.; morning service, 11:15 a.m.; Sunday night service, 7:30 p.m. Mid-week services, Wednesday, 7:30 p.m.

FOURSQUARE CHURCH

FOURSQUARE CHURCH—Corner of Arlington and Sepulveda. Telephone, DA 6-2072. Rev. and Mrs. James P. Lovell, pastors. Sunday services, 9:30 a.m.; morning worship, 10:45 a.m.; group services, 6:00 p.m.; Y.P. Cadets (Defenders); Evangelistic, 7:15 p.m. Mid-week, Wednesday Bible study at 7:15 p.m. Public invited.

CHRISTIAN CHURCH

DEL AMO CHRISTIAN CHURCH, 4915 Emerald St. (corner of Emerald and Victoria), phone 371-8414. Leslie C. Ashford, minister. Sunday School 9 and 11 a.m. Morning worship, 10 a.m. Nursery care for children under three. Jet Cadets (grades 4-6), 5:30 p.m. and Christian Youth Fellowship (grades 7-12) at 6:30 p.m. each Sunday.

CHRISTIAN SCIENCE CHURCH

FIRST CHURCH OF CHRIST SCIENTIST—218th St. and Manuel Ave., Torrance. Church services: 11 a.m. Wednesday evening meetings, 8 p.m. Sunday school, 9:15 a.m. and 11 a.m. Children under 10 years of age must be accompanied by parents or guardian for enrollment. Reading room, 1406 Cravens. Open 10 a.m. to 5 p.m. daily except Sunday and holidays; also 10 to 9 Monday and Friday evenings. All are welcome to attend our services and to use our Reading Room.

FIRST CHRISTIAN CHURCH OF TORRANCE (Disciples of Christ), corner of Eldorado and Maple, FA 8-2520. Rev. H. Milton Sippel, minister. Rev. Odell Myers, minister to youth. Mrs. Howard Foster, director of church school. Worship services and church school sessions 9:30 and 11 a.m. Classes begin with two year olds. Nursery care for children under two Chi Rho (Junior High) 9 p.m. C.Y.F. (High School) 9 p.m. each Sunday.

GREEK ORTHODOX

GREEK ORTHODOX—317 S. Broadway Redondo Beach. Phone FR 8019. 9:47a Divine Liturgy, 11 a.m. to 12 noon every Sunday. Rev. Nilsolits Sunday school classes at 10:30 a.m. Greek school and Bible classes every Tuesday, Thursday, 7:30 p.m.

LUTHERAN

FIRST LUTHERAN CHURCH—Located on Carson St. and Flower Ave. in Torrance. Mrs. J. Roleder, pastor. Residence, 1625 Flower Ave. Phone FA 8-3249. Church office, 1725 Flower Ave. FA 0-4181. First church worship 8 a.m.; Sunday School 9:45 a.m. and 9:45 a.m.; second morning worship 10:45 a.m.
IMMANUEL LUTHERAN CHURCH (Missouri Synod)—705 Knob Hill Ave., Redondo Beach, near Southwood Park, west of Hawthorne, south of Sepulveda. Sunday School, 9:45 a.m. Worship service, 8:30 and 11 a.m. Pastor A. L. Scheutz. FR 8019 or 5-7535

METHODIST

FIRST METHODIST CHURCH OF TORRANCE—1551 El Prado, Torrance, FA 8-3242. Rev. Gilbert S. Zimmerman, pastor. Sunday Worship 9 and 11 a.m. Sunday School through the fifth grade 9 and 11 a.m. Sunday School sixth grade through adults at 10 a.m. Nursery care 9:12

PRESBYTERIAN

FIRST PRESBYTERIAN CHURCH OF GARDENA—1957 W. Redondo Beach Blvd. Davis 4-1064. Rev. R. Murray Jones, minister. 1492 W. 153rd St., Gardena. DA 3-1215. Sunday School—1957 Redondo Beach Blvd. 9:30 a.m. Sunday Worship—1957 Redondo Beach Blvd. 11:00 a.m. (nursery care provided). Youth Fellowship—1957 Redondo Beach Blvd. Sunday, 7:00 p.m.

GREYFRIARS MEMORIAL ORTHODOX PRESBYTERIAN CHURCH—22511 South Figueroa, Torrance. Formerly of Los Angeles. Worship hours, 11 a.m. and 7:30 p.m. every Sunday. Sunday School beginning at 9:30 a.m. Bring your children (nursery). Young people's fellowship at 6 p.m. William J. Bomer, pastor. Mr. Richard Gorum, Supl. of Sunday School. Mr. Tom Millard, Director of Choir.

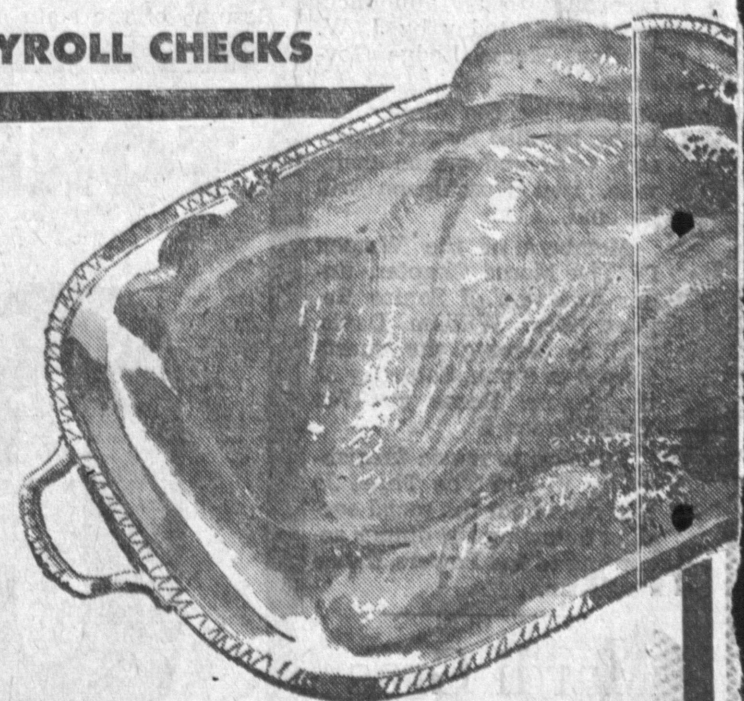
SEVENTH-DAY ADVENTIST

TORRANCE SEVENTH-DAY ADVENTIST—1610 Acadia Ave. Elder Manson Metcalf, pastor. Phone: Residence, 425-0824. Church office, FA 8-1546. Sabbath school, 9:30 a.m.; church services, 11 a.m.; Bible study, Wednesday, 7:30 p.m.; young people's meetings, Friday, 7:30 p.m.

Is YOUR CHURCH listed on the fastest growing, most promising church page in the South Bay area? If not, call DA 5-1515 and ask for Ronnie Saunders, Church Editor.

LEONARDS
 OPEN 10 A.M. TO 6 P.M.
MEMORIAL DAY
 PRICES EFFECTIVE MAY 30, 31, JUNE 1 and 2
 PACIFIC COAST HWY AT CRENSHAW-TORRANCE
DISCOUNT SUPERMARKET

HEN TURKEYS
 WE CASH PAYROLL CHECKS
PLUMP-TENDER OVEN READY...



REMEMBER! WE'LL BE OPEN MEMORIAL DAY!
 POSITIVELY THE BEST BUY WE'VE EVER HAD IN TURKEYS
29¢ LB.

USDA "CHOICE"
 • ROUND STEAK
 • SWISS STEAK
 • RUMP ROAST
 YOUR CHOICE **65¢ LB.**

Bacon THIN SLICED
RATHS BLACKHAWK BACON
 THICK OR THIN **45¢ LB.**

USDA "CHOICE"
 • CLUB STEAK
 • T-BONE STEAK
 • SIRLOIN TIP
 YOUR CHOICE **89¢ LB.**

FRESH-LEAN GROUND BEEF
3 LBS. FOR 99¢

USDA "CHOICE"
PORTERHOUSE STEAK
98¢ LB.

TENDER • JUICY MANHATTAN FRANKS
 1-LB. PKG. **39¢**

USDA "CHOICE"
BONELESS TOP SIRLOIN STEAK
19¢ LB.

LUNCH MEATS
4 6-OZ. PKGS. 99¢

MOUNTAIN GOLD BIRDSEYE SWISS CHEESE 5-OZ. PKG. **23¢**
BETTERMADE Potato SALAD 16-OZ. CONTAINER **29¢**
SPRINGFIELD LEMONADE 12 6-OZ. CANS **\$1.12**
CIGARETTES
 REG. SIZE **207** CARTON
 KING SIZE **213** CARTON