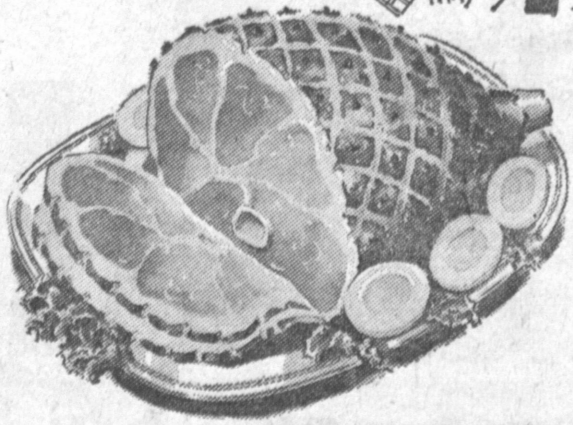




IT'S PICNIC TIME

THE BOYS WILL BE OPEN
MEMORIAL DAY—THURS. MAY 30
The Crenshaw, Hawthorne, Vermont, Long
Beach & Norwalk will be open the regular
hours—All other Boys Markets will be open
9 A.M. to 7 P.M.



Ham
FULL SHANK HALF
FARMER JOHN EASTERN
TENDER SMOKED

35^c
lb.

FARMER JOHN EASTERN TENDER SMOKED
WHOLE HAM 39^c
BUTT END HAM 45^c
HAM SLICES 79^c
CENTER CUT

—U.S.D.A. GRADED CHOICE STEER BEEF—

GROUND CHUCK Fresh Lean **49^c**
lb.

TENDER, JUICY CHUCK
POT ROAST 29^c
lb.

7-BONE Center Cut **BEEF ROAST 39^c**
lb.

GROUND ROUND Fresh Lean **65^c**
lb.

ENGLISH-CUT TENDER, JUICY, BONELESS **79^c**
lb. **ROAST 79^c**
lb.

STANDING PRIME TENDER, TASTY, SMALL END **RIB ROAST 69^c**
lb.

SLICED HALIBUT Fresh Frozen Northern **49^c**
lb.

RIB TENDER, JUICY, TRIMMED-RITE **79^c**
lb. **STEAK 89^c**
lb.

SWISS STEAK 59^c
Thick-Cut Bone-in

FOLGER'S
COFFEE
1 lb. Can **55^c**

VAN CAMP'S PORK 'N
BEANS
5 NO. 2 1/2 CANS \$1

C-H-B SALAD
OIL
24-oz. Bottle **23^c**

HALFHILL CHUNK
TUNA
Light Meat 6 1/2-oz. Can **19^c**

LIBBY'S FROZEN ASSTD.
DRINKS
6-OZ. CAN **10^c**

SUPERIOR PAPER **PLATES** Pkg. of 100 **79^c**
CUT-RITE **WAX PAPER** 125-Fr. Roll **25^c**
HAWAIIAN RED, YELLOW OR HULA HIGHBALL **PUNCH** 46-oz. Cans **3 \$1**

PIEBOY ASSTD. CREAM
PIES
FRESH-FROZEN 16-OZ. PKG. **29^c**

MA BROWN'S **RELISH** • HAMBURGER • HOT DOG • SWEET • 13-OZ. JAR **29^c**
MOREHOUSE EL REY **MUSTARD** Quart Jar **23^c**
HOLIDAY KOSHER OR REG. **DILL PICKLES** 22-oz. Jar **29^c**

ASST. BEVERAGES
SUPER COOLA
12 12-oz. Cans **\$1**

HEINZ STRAINED
BABY FOOD
10 4 3/4-oz. Jars **89^c**

COOK-OUT BRIQUETS
5-lb. Bag **29^c**

PREPARED FOODS TO GO
FRIED CHICKEN Featuring the New Flavor Crisp Method
BY THE PIECE
• DRUMSTICK & THIGH . **33^c** ea
• BREAST & WING **29^c** ea

GOLDEN VELVET BEER
Case of 24 12-oz. Cans **\$2.98**

Junior Department Store
11 1/2-OZ. GLASS MODERNISTIC DESIGN
WATER TUMBLERS
REG. 15c EA.
in a Ctn. for **12 99^c**

Fresh-Frozen Foods
FEILER'S DINNER **PATTIES** BEEF & VEAL 3 12-oz. Pkgs. of 4 Patties Each **\$1**
ROSARITA
• CHEESE ENCHILADA 12-oz. Pkg. **29c**
• COMBINATION PLATE 12-oz. Pkg. **39c**
• MEXICAN DINNER 16-oz. Pkg. **49c**
• BEEF ENCHILADA DINNER 14-oz. Pkg.
ROSELLA **CREAM CHEESE PIES** 16-oz. Pkg. **49^c**

GOLD MEDAL **FLOUR**
5-lb. Bag **57^c**
PRELL CONCENTRATE SHAMPOO Med. Size (Reg. 60c) **51c**

Fabulous Delicatessen
BALLARD or PILLSBURY **BISCUITS** 3 Cans of 10 **25^c**
PLUMROSE PICNICS IMPORTED DANISH READY-TO-SERVE NO WASTE 2-lb. Can **\$1.69**
PASTRAMI VIENNA SLICED 4-OZ. PKG. **39^c** ea.

QUEEN SIZE, ASSTD. DESIGNS
LAP TV TRAYS With folding brass legs. Use as a TV or Bed Tray **88^c** ea.

3' x 5' UNITED STATES **FLAG KIT**
COMPLETE WITH 6-FT. ALUMINUM POLE AND MOUNTING BRACKET
\$5.00 VALUE **\$2.79**

Fresh Fruits & Vegetables
BARE ROOT ROSES
CALIF. GROWN 2-YR. OLD PLANTS 20 VARIETIES TO CHOOSE FROM GUARANTEED TO BLOOM THIS YEAR **29^c** ea.

Boys Bottle Shop
100% GRAIN NEUTRAL SPIRITS—80 PROOF
DANUBE VODKA Full Fifth **\$2.98** Full Quart **\$3.79**
READY-MADE COCKTAILS BY PUMP ROOM
• SCREWDRIVER Full Quart **\$1.99**
• GIMLET
• DAIQUIRI
• MARGUERITA
100 Proof Bourbon—Bottled in Bond Full Fifth **\$4.29**
BOURBON RARE

COLORFUL PLASTIC . . . REG. 25c EA.
FOOD CONTAINER With Lid **2 FOR 25^c**

SWEET, VINE-RIPENED
CANTALOUPE **4 FOR \$1**

Delsey **TOILET TISSUE**
2 Roll Pak **25^c**

AD GOOD
7 FULL DAYS
THURS. MAY 23
THRU WED. MAY 29



- IN LOS ANGELES SHOP AT:
* 120th and Vermont
* Florence and Figueroa
* Crenshaw and Rodeo
* Vermont and Siason
* Plus and Arapahoe
* 4th and Broadway
- OTHER BOYS MARKETS IN SOUTHERN CALIFORNIA
* DOWNEY, 12270 Paramount
* FULLERTON, N. Raymond & Commonwealth
* GARDENA, Redondo Beach and Van Ness
* HAWTHORNE, 118th St. and Hawthorne
* LA MIRADA, Imperial and Luitwieler
* HIGHLAND PARK, Ave. 56 and Monte Vista
* LAKEWOOD, Lakewood Center
* LONG BEACH, 3750 E. Anaheim
- * MONTEBELLO, Beverly and Wilcox
* NORWALK, Pioneer and Alondra
* POMONA, Holt and Indian Hill
* REDONDO, Manhattan Beach and Inglewood
* SAN FERNANDO, Glen Oaks and Hubbard
* SAN GABRIEL, Valley and Del Mar
* TORRANCE, Normandie and Carson
* WILMINGTON, Avalon and Anaheim

