



# BRANDS YOU KNOW AT THE PRICES YOU WANT!



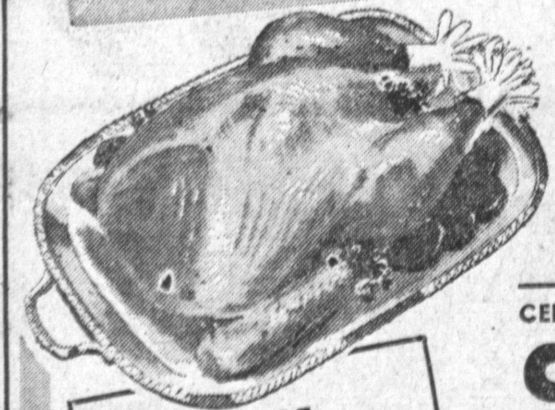
PLUS BLUE CHIP STAMPS

**MAYONNAISE**  
**BEST FOODS**  
QUART JAR **48<sup>c</sup>**

**LIBBY'S**  
**TOMATO JUICE**  
5 Big 46-oz. Cans **\$1**

**COLORED OR WHITE**  
**SCOTT-TISSUE**  
REG. ROLL **10<sup>c</sup>**

**STOKELY**  
**TOMATO SAUCE**  
3 8-oz. Cans **19<sup>c</sup>**



## TURKEYS

PLUMP-TENDER OVEN-READY

## TOMS

FRESH-FROZEN YOUNG, MEATY OVEN-READY GOVT. INSPECTED

**29<sup>c</sup>** lb.

**HEN TURKEYS**  
Fresh Frozen Plump-Meaty Young Oven-Ready **39<sup>c</sup>** lb.

CENTER-CUT, TENDER TASTY  
**CHUCK STEAK** U.S.D.A. Choice **39<sup>c</sup>** lb.

THICK-SUT BONE IN  
**SWISS STEAK** U.S.D.A. Choice **59<sup>c</sup>** lb.

BONELESS ENGLISH-CUT  
**FAMILY STEAK** U.S.D.A. Choice **79<sup>c</sup>** lb.

BONELESS TENDER  
**BEEF ROAST** U.S. Choice **79<sup>c</sup>** lb.

BONELESS, CUT-UP  
**STEWING BEEF** U.S. Choice **79<sup>c</sup>** lb.

LANCASTER FARMS  
**ROASTING CHICKENS** Calif.-Grown (Slight Skin Tears) **39<sup>c</sup>** lb.

RATH'S BLACKHAWK  
**SLICED BACON** **55<sup>c</sup>** lb.

Wilson's Corn King  
**SLICED BACON** **49<sup>c</sup>** lb.

SEA-FOOD SPECIALS  
FROZEN NORTHERN **SLICED HALIBUT** **69<sup>c</sup>** lb.  
FRESH FROZEN SLICED **RED SALMON** **89<sup>c</sup>** lb.

**BLUE BONNET**  
**OLEO**  
1-lb. Pkg. **25<sup>c</sup>**

**PEANUT BUTTER** SKIPPY 12-OZ. JAR **39<sup>c</sup>**  
**SCOTTIES TISSUES** 2 Boxes of 200 **25<sup>c</sup>**  
**VAN CAMP TAMALES** 15-oz. Can **29<sup>c</sup>**

ROYAL HOST CATERING  
**ICE CREAM** All Flavors  
1/2 Gal. Ctn. **59<sup>c</sup>**

Libby's Fresh Frozen  
**MEAT PIES** • CHICKEN • TURKEY • BEEF 6 8-oz. Pkgs. **\$1**  
Cypress Gardens Frozen Pure Florida  
**ORANGE JUICE** New Size Makes Quart 3 8-oz. Cans **\$1**

CAMPBELL'S VEGETABLE  
**SOUP**  
8 10 1/2-oz. Cans **\$1**

Nestle's Chocolate  
**QUIK** 2-lb. Can **89<sup>c</sup>**  
FEATURED ON KTTV—CHANNEL 11  
IDA PACK FROZEN  
**CRINKLE CUT POTATOES** 1-lb. Pkg. **25<sup>c</sup>**

BEAUTIFUL  
**HERLIN** SWISS  
WATCHES  
Outstanding Offer **\$8.95**  
AND \$39.95 IN CASH REGISTER TAPES.  
Models for "Him and Her"  
... Magnificently styled HERLIN WATCHES at outstanding savings. Dress and Sport styles... expansion and strap bands, 30 day unconditional guarantee plus a two-year service certificate. **BEAUTIFULLY BOXED**

Fabulous Delicatessen  
GRAND TASTE TENDER JUICY **WIENERS** **39<sup>c</sup>** lb.  
Full Cream Nutty Flavor **SWISS CHEESE** By the Piece **59<sup>c</sup>** lb.  
Grand Taste Fresh **LIVER SAUSAGE** By the Piece **33<sup>c</sup>** lb.

ROYAL GARNET FROZEN  
**GRAPE JUICE** 6 6-oz. Cans **\$1**

NABISCO HONEY MAID GRAHAM  
**CRACKERS**  
1-lb. Pkg. **33<sup>c</sup>**

Junior Department Store  
**KITCHEN TOOLS**  
BLUE FLORAL DESIGN MELAMINE HANDLES STAINLESS STEEL START YOUR SET NOW 8 ITEMS AVAILABLE PLUS HANGING RACK  
**66<sup>c</sup>** ca.  
**TENNIS RACQUET** **\$1.33**  
• HI TEST NYLON STRUNG • LAMINATED HARD-WOOD FRAME • GENUINE TOURNAMENT GRIP  
While They Last!  
**LADIES BEACH or PLAY SANDALS** Vinyl With Wedge Rubber Sole Ass't. Styles & Colors Reg. 98c **66<sup>c</sup>** Pr.

Fresh Fruits & Vegetables  
**BANANAS**  
FIRM, RIPE CENTRAL AMERICAN **2 LBS. FOR 25<sup>c</sup>**

CARNATION EVAPORATED  
**MILK** 2 Tall Cans **27<sup>c</sup>**

STOKELY'S HALVES OR SLICES CLING  
**PEACHES** 4 No. 2 1/2 Cans **\$1**  
NABISCO COOKIES  
**HYDROX** 16-OZ. PKG. **49<sup>c</sup>**  
PILLSBURY  
**FLOUR** 5-lb. Bag **49<sup>c</sup>**

**CUCUMBERS**  
FRESH-PICKED LONG, GREEN **10<sup>c</sup>** lb.

**ORANGES**  
SWEET JUICY VALENCIA 3 lbs. for **39<sup>c</sup>**

SANITARY NAPKINS  
**MODESS** Incl. 7c Off Box of 24 **79<sup>c</sup>**

AD GOOD 7 FULL DAYS THRU WED. MAY 22  
**The Boys MARKETS**

IN LOS ANGELES SHOP AT:  
\* 126th and Vermont  
\* Crenshaw and Rodeo  
\* Vermont and Slauson  
\* Pico and Arapahoe  
\* 47th and Broadway  
\* Florence and Figueroa

OTHER BOYS MARKETS IN SOUTHERN CALIFORNIA  
\* DOWNY, 12270 Paramount  
\* FULLERTON, N. Raymond & Commonwealth  
\* GARDENA, Redondo Beach and Van Ness  
\* HAWTHORNE, 118th St. and Hawthorne  
\* LA MIRADA, Imperial and Luitwiler  
\* HIGHLAND PARK, Ave. 56 and Monte Vista  
\* LAKEWOOD, Lakewood Center  
\* LONG BEACH, 2750 E. Anaheim

\* MONTEBELLO, Beverly and Wilcox  
\* NORWALK, Pioneer and Alondra  
\* POMONA, Holt and Indian Hill  
\* REDONDO, Manhattan Beach and Inglewood  
\* SAN FERNANDO, Glen Oaks and Hubbard  
\* SAN GABRIEL, Valley and Del Mar  
\* TORRANCE, Normandie and Carson  
\* WILMINGTON, Avalon and Anaheim

