

## Panel to Discuss Twin Development

Putting into practice their belief that mothers of twins are the ones best qualified to help other mothers similarly blessed, members of the South Bay Mothers of Twins Club will participate in a panel discussion on Twin Development at their May 20 dinner meeting at Lococo's in Manhattan Beach.

Four tired-and-true "mother-experts" will lead the discussion to be moderated by Mrs. Norven McKean of San Pedro. Their subjects within the Family Group, presented by Mrs. Richard Gilmore of Hermosa Beach: "Behavior Patterns in Relation to Society," discussed by Mrs. Pat Stewart of Rolling Hills; "Eating Habits and Toilet Training — Critical Areas in Pre-School De-

velopment" by Mrs. Ronald Eisman of Torrance, and "Transition from Pre-Teen Age to Adolescence" by Mrs. Richard Cassell of Hollywood Riviera.

Panel discussion will be preceded by the annual election of club officers, at which time plans for the June 17 installation will be announced by Mrs. Glenn Smith, president.

The meeting will be topped off by a white elephant auction, with Mrs. John Adams of San Pedro as chief auctioneer. The proceeds will be used for the club's immediate philanthropic efforts.

Any mother of twins living in the Harbor or South Bay area is invited to contact Mrs. Ronald Eisman of Torrance for further membership information.

## Delegates Named To AAUW Confab

Members of South Bay branches of the American Association of University Women will attend the forty-second annual California State Division convention in Anaheim May 16, 17, and 18.

Twenty-four delegates will represent the Manhattan Beach, Palos Verdes-Rolling Hills, and San Pedro branches at the culminating State Division activity for the 1962-63 year.

Convention activities will highlight the theme, "So much to do; so little done," in a series of speeches, reports, and roundtable discussions. Featured speakers will include Dr. Margaret C. Fagin, State Division president; and Dr. Blanche H. Dow, association presidential nominee for 1963-67.

Hostess for the May 16 to 18 conclave, to be headquartered at the Disneyland Hotel, will be the Long Beach Branch.

Official delegates for the Manhattan Beach Branch will be: Mmes. John Elliott, legislative chairman; John D. Freeman, historian; Norma Hessman, treasurer; Michael Lesh, president; Richard Rector, parliamentarian; Orlando Tafuya, second vice-president; Ronald Webb, first vice-president; and R. J. Wickwire, public relations chairman.

Palos Verdes-Rolling Hills Branch will be officially represented by: Mmes. Robert S. Fraser, elementary and secondary education study group chairman; Thomas Harding, first vice president; James Heusdens, historian; Raymond Oddone, treasurer; Harry G. Petterson, program planning committee mem-

## Sorority Slates Luncheon

Palos Verdes-South Bay Alumnae of Alpha Xi Delta will sponsor a benefit bridge luncheon and fashion show at 12:30 p.m. Saturday at the Hacienda Hotel, San Pedro.

Proceeds will go to the Neighborhood Youth Association in Wilmington and towards Hull House in Chicago.

Committee members include: Mmes. H. N. Jensen of Inglewood, chairman; Billy Blanchard of Torrance, table decorations; Louis Bradvica of Torrance, tickets; James Stovall of Los Angeles, tallies; and Gilbert Rea of Palos Verdes, door prizes, raffle and fashion show.

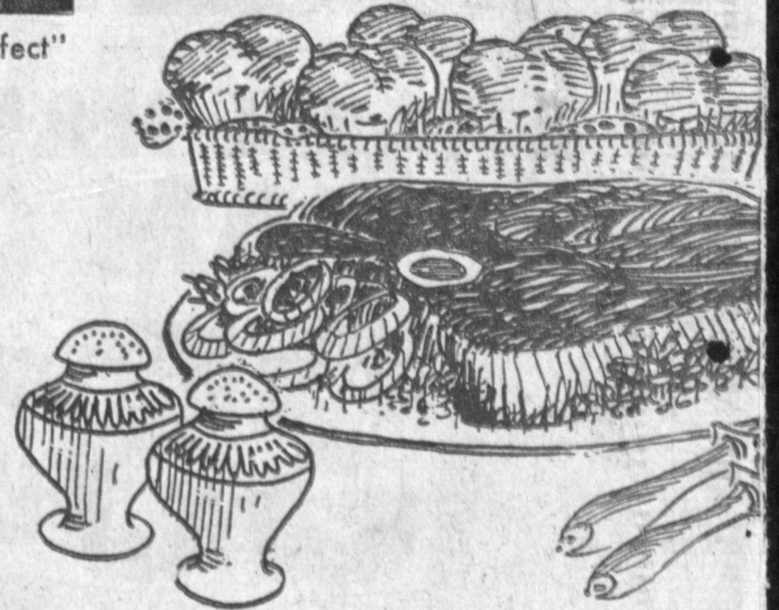


USDA "Choice" or Food Giant "Banquet Perfect"

# ROUND STEAK

# 65¢ lb.

bone in



U.S.D.A. "Choice" or Food Giant "Banquet Perfect"

# SWISS STEAK

# 65¢ lb.

USDA "Choice" or Food Giant "Banquet Perfect"

# RUMP ROAST

# 65¢ lb.

bone in

U.S.D.A. "Choice" or Food Giant "Banquet Perfect"

# CUBED STEAK

# 98¢ lb.

Cream style or whole kernel, full of country-sweetness!

**DEL MONTE GOLDEN BANTAM CORN 17¢**

no. 303 can

The "Aristocrat" of all condiments. Kern's vinegar and rare spices make it great.

**KERN'S SPICY CHILI SAUCE 19¢**

12 ounce bottle

Anthony Small Shell, Elbow, Salad, or Cut Macaroni, or Spaghetti, with flavor-blend texture.

**ANTHONY SPAGHETTI OR MACARONI 19¢**

1 lb. pkg.

First Quality Grade AA. A delightful spread for bread, a perfect recipe.

**GOLDEN CREME BUTTER**

A delicious blend of orchard-ripe apples. The perfect healthful dessert.

**REDWOOD EMPIRE APPLES**

Good hot or cold; Adds color and taste to salads. Sliced. Serve hot or cold.

**MA PERKINS SLICED BEET**

FARM FRESHNESS ASSURED

# LARGE FRESH "AA" EGGS

# 31¢

dozen



ISLAND SUN

# SLICED PINEAPPLE

# 10¢

no. 1 flat can

RICHARD

# HULL TOMATOES

# 14¢

# Golden Ripe BANANAS



# 2 lbs. 25¢

ITALIAN OR SUMMER

# SQUASH

# 10¢

garden fresh

LARGE FUERTE

# AVOCADOS

# 2 for 29¢

Rosarita for true Mexican flavor, no. 2 1/2 can

**Refried Beans 25¢**

Kraft, fries to golden perfection. 24 oz.

**Safflower Oil 49¢**

Gebhardt, a nourishing dish for lunch, no. 300

**Tamales 4 for \$1**

Gardo's frozen beef. (Refried beans, 29¢)

**Enchilada Dinner 39¢**

Tres Top, fruit juices for health. quart size

**Apple Juice 33¢**

Full benefit of polyunsaturates. one pound

**Mazola Margarine 37¢**

Frozen Barbecue or Pastrami. Frozen 9 oz.

**Larry's Sandwiches 59¢**

ASSORTED FLAVORS

**CARNIVAL BEVERAGES**

10 12-oz. cans 69¢

JAN-U-WINE CHINESE

**Beef Chop Suey**

Chicken Chow Mein

42-ounce package 89¢

ECONOMICAL

**GIANT SURF DETERGENT**

59¢ incl. 15¢ off

GIFT MOTHER WITH

# Roses

BUSH  
TREE AND  
CLIMBING  
ROSES  
NOW IN FULL  
BLOOM



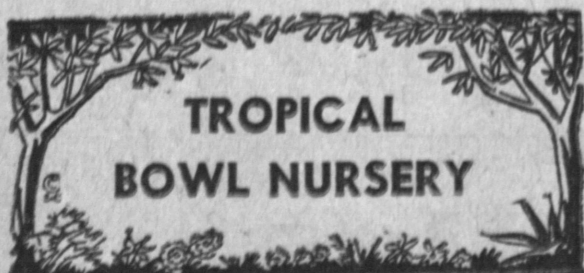
Indoor Potted Plants

- AFRICAN VIOLETS
- HYDRANGEAS
- AZALEAS
- MUMS OR
- DISH GARDENS

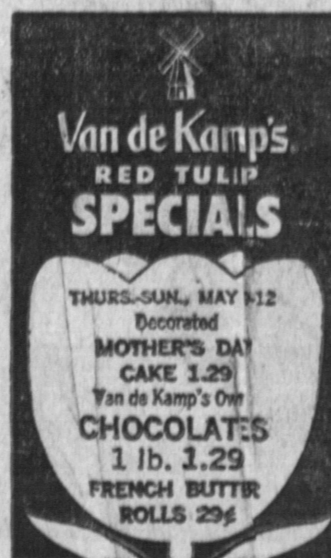


We Give Stamps

Headquarters for Famous Scott Products



2457 W. LOMITA BLVD. AT CRENSHAW  
LOMITA PHONE DA 6-7130



NUTRITIONAL  
**GERBER'S STRAINED BABY FOOD**  
3 4 1/2-oz. jars 31¢

ASSORTED COLORS  
**ORCHID PAPER NAPKINS**  
cello wrapped  
2 80 Count pkgs. 27¢

REYNOLDS  
**ALUMINUM FOIL**  
25 ft. roll 31¢  
IT FLOATS!  
**PERSONAL IVORY**  
4 bars 27¢

TOILET SOAP  
**CAMAY**  
2 bath size 29¢  
INCLUDES 5¢ OFF  
**IVORY SNOW**  
reg. pkg. 28¢

5 FLAVORS  
**METRECAL**  
dietary supplement 6 8-oz. cans \$1.00  
DOWNEY  
**FABRIC SOFTENER**  
reg. plastic 49¢