

# 3<sup>rd</sup> Birthday Sale

MEN'S • LADIES' • CHILDREN'S READY TO WEAR CLOTHING •



**LADIES' HALF SLIPPS**  
Nylon, seam to seam shadow panel, attractive lace and embroidery trim, expertly tailored for that more comfortable fit. Pastel and high shades. Sizes S-M-L.

REG. 1.39 VALUE  
**87¢**

LADIES'

**SLEEVELESS BLOUSES**

Clearance Sale of odds and ends, broken lots. Not all sizes in all styles. These blouses sold for 1.99 each. All American made. VALUES TO 1.99

**59¢**

MEN'S

**TRAVEL SLIPPERS**

Genuine leather soles, soft and pliable. A quality slipper guaranteed for super comfort.

REG. 1.39 VALUE

**87¢**

Sizes S-M-L.  
Packaged in cello pouch. Black, tan and brown.

GIRLS'

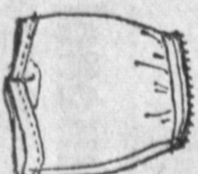
**SHORTS**

100% cotton, washable casual cloth, durable, crease-resistant, pre-shrunk for lasting fit. Woven and finished in the USA. Assorted colors, sizes 3-6X.

REG. 1.39 VALUE  
**84¢**

GIRLS'

**PANTIES**



100% Ticot, non-run, elastic band. Pink, blue, white and maroon. Machine washable. Colors guaranteed. Sizes 2-14.

REG. 29¢ VALUE  
**19¢**

Birdseye

**DIAPERS**

Puff spun, pinked edge, no hems to chafe or ravel. Faster drying, super absorbent. Sizes 27"-27".

REG. 98¢ VALUE  
**57¢**



Children's

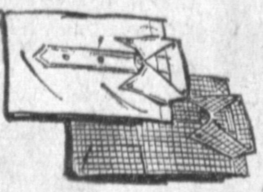
**THONGS**

Comfortable rubber, zoris-dry quickly, noiseless, non-slip. Durable, attractive colors. Sizes S-M-L.

REG. 39¢ VALUE  
**27¢**

MEN'S

**Sports Shirts**



Short sleeve, machine washable, guaranteed machine wash. Guaranteed to last. Guaranteed to be the best. Guaranteed to be the most comfortable. Sizes S-M-L.

REG. 2.99 VALUE  
**\$179**

Boys'

**Knit Sport Shirts**

Plaid type, quarter zipper, short sleeve. Guaranteed washable. Attractive styles. Good assortment of colors. Sizes 6-16.

REG. 2.39 VALUE  
**\$178**

Boys'

**SWIM TRUNKS**

Latex and boxer styles. Attractive patterns, color-fast. Generously cut for more comfort. Sizes 2-16.

REG. 1.39 VALUE  
**99¢**

Boys'

**COTTON SOCKS**



Styled for comfort. Colorfast machine washable. Nylon reinforced heel and toe. Novelty patterns. Cello pack. Sizes 6 to 10.

REG. 1.39 VALUE  
**487¢**

Boys'

**SKI PAJAMAS**

100% cotton knit, ribbed cuffs, crew neck. Two-tone blues, greys, reds and maize. Generously cut for more comfortable fit. Guaranteed washable, sizes 6-16. While they last!

REG. 1.99 VALUE  
**\$100**

Boys'

**BOXER PANTS**

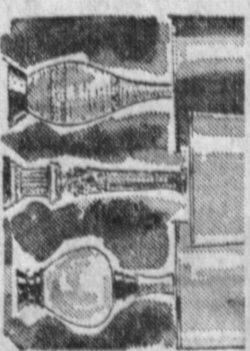
Heavy duty, quilted, elastic all around waistband. Good assortment of colors. Sizes 2-16.

REG. 1.19  
**89¢**

# Try-It Furniture

# Try-It Furniture

WE'RE CELEBRATING, TOO! ...  
TRY IT'S PATIO-GARDEN SHOP'S 3<sup>rd</sup>



**MODERN LAMPS**

One group of very lovely modern lamps in many different styles, shapes and colors. Some as high as 40 inches, most with 3-way switches. Values to 19.95.

YOUR CHOICE  
**688** Ea.

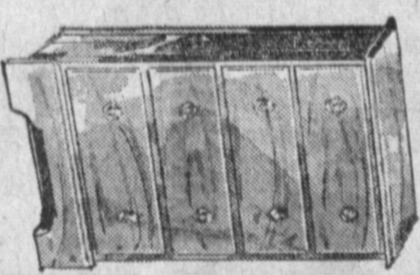
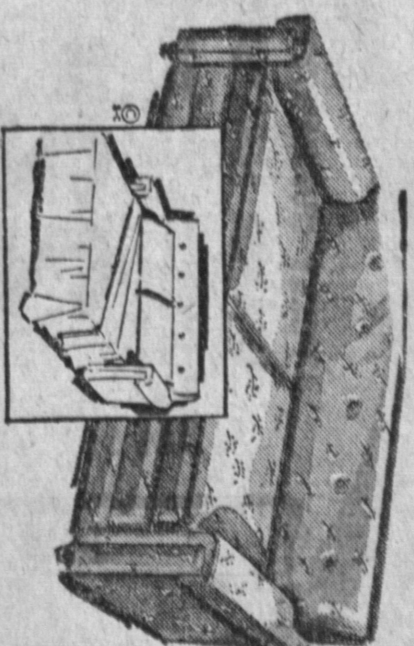
**HIDE-AWAY SOFA-BEDS**

Special Factory Buy-Out!

See our selection of the newest in nylon, tweed, vinyl and nonghlyde covered, foam-cushioned Hide-Away beds-sofas. Real comfort in a space-saving extra bed.

VALUES TO 218.00

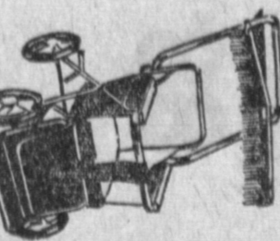
Priced from **119.00**



**MAPLE CHESTS**

Here's a real buy in a maple finish, roomy 5-drawer chest that is sturdily built. A regular 17.00 value.

NOW **1288**



**DELUXE BABY STROLLER**

Deluxe "lay-back" stroller constructed of heavy, chrome-finish tubular steel, with canopy and shopping basket attached.

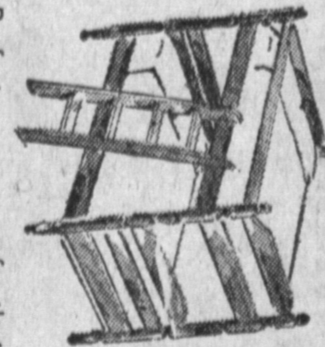
18.00 VALUE  
**1188**



**MAPLE BUFFET and HUTCH**

Two large shelves on top, two roomy drawers (one partitioned) two large cabinets below.

VALUE 109.00  
**6800**



**BUNK BED SALE**

Perfect space-saver for that extra room. Sturdily built bunk bed set includes two beds, guard rail, ladder and slats. All hardwood.

VALUE 60.00  
**3488**

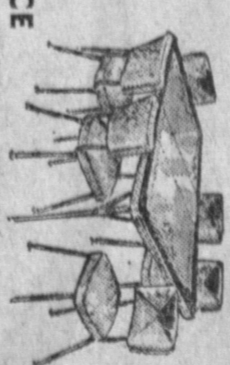


**EMERSON PORTABLE STEREO**

Super reception with this Emerson two-speaker portable stereo with 4-speed record changer, diamond needle, tone control.

44.00 VALUE  
**2800**

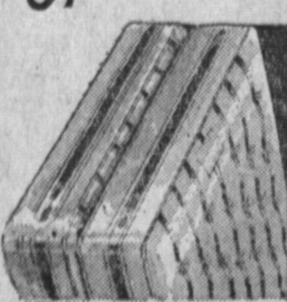
CLOSEOUT OF STANDARD RECORD PLAYERS FROM 1588



**7-PIECE MODERN DINETTES**

Here's the latest in unique table and chair designs. Table, leaf and six chairs. Some with in-laid and two-tone tops, durable plastic coverings on chairs.

PRICED FROM **5800**



**BOX SPRINGS and MATTRESS**

Sleep comfortably yet economically. See this one group of quality built box springs and mattresses with hundreds of coils, heavy coverings.

TWIN SIZE **1800** In Sets Only



**Custom Bound Edge CARPET PIECES**

These make perfect throw rugs. All are top quality carpeting with bound edges, wide range of colors and patterns.

16" x 24" 18" x 27" 27" x 54" **69¢ 99¢ 299**

We have a tremendous selection of walk-in wall carpeting in all types of materials, colors and patterns by famous manufacturers. See us first for your carpeting. Priced from **188**

TRY-IT—PAGE TWO

TRY-IT—PAGE SEVEN

TRY-IT STORES

23033 So. AVALON BLVD.

WILMINGTON

The Try-it Stores

23027-33 So. Avalon Blvd.

Wilmington