

A MESSAGE TO Governor Edmund Brown

It is the part of the responsibility of your leadership to make sure that the new four-year college to serve the people of the South area is located where it will best serve the future educational needs of all the people.

It is quite obvious that the Torrance site is geographically located to best serve the students in the southern portion of Los Angeles County. The map clearly indicates the mileage from the nearest colleges and the proximity of the Torrance site to the existing state colleges.

This matter should be far beyond any political maneuvering by party big-wigs, or financial tycoons.

The people, business and industry of Torrance are almost unanimously in favor of the college coming to Torrance. We would welcome the college and its students as an integral part of our community.

THIS MESSAGE IS MADE POSSIBLE BY THE FOLLOWING BUSINESSMEN IN THE SOUTH COAST AREA

GEORGE CARTER PIE COMPANY
4231 Spencer St., Torrance

HAIR AFFAIR

VAC-HYD PROCESSING CORP.
928 Engracia Ave., Torrance

SOUTHWEST SAVINGS AND LOAN
1603 Cravens Ave., Torrance

GEORGES MEAT 'N' EAT PLACE
1340 El Prado, Torrance

PLAZA MEATS

1330 El Prado, Torrance
2507 Pacific Coast Hwy.

WINCHELL'S DONUT HOUSE
17210 Prairie Ave., Torrance

ROLLING HILLS LIQUOR, INC.
24209 So. Hawthorne Blvd., Torrance

J - S ENTERPRISES
1030 Engracia Ave., Torrance

ALL-AMERICAN RUBBISH CO.
2008 Carson, Room 107, Torrance

HELEN GRACE CANDIES
1339 El Prado St., Torrance

WILLIAM R. EVERETT, Building Contractor
2780 Sepulveda Blvd., Torrance

LEE WILSON & ASSOCIATES, REAL ESTATE BROKERS
2908 West 164th Street, Torrance

NORLEYS MARKET
1330 El Prado, Torrance

BETTIE THOMAS STUDIOS
1215 Crenshaw Blvd., Torrance

FLO BAILY EMPLOYMENT AGENCY
1409 Cravens Ave., Torrance

STONE - MEYERS MORTUARY
1221 Engracia St., Torrance

LIL - LEE DELI
4860 W. 190th St., Torrance

SUPERIOR SCAFFOLD CO.
2303 Jefferson St., Torrance

MELODY MUFFLER
1213 Engracia, Torrance

NATIONAL ROOFING CO.
1017 Fonthill Ave., Torrance

PARKER SMITH CONSTRUCTION
1608 Hickory Ave., Torrance

R - S JEWELERS
1405 Marcelina Ave., Torrance

LEO SALISBURY TIRE CO.
20465 Hawthorne Ave., Torrance

PITTSBURG PLATE GLASS CO.
1413 Cravens Ave., Torrance

EIGHTY EIGHT CENT STORES
1423 Marcelina Ave., Torrance

GLADYS MORGAN BEAUTY COLLEGE
2744 Pacific Coast Hwy., Torrance

DEE'S SERVICE
807 Border Ave., Torrance

HEEL AND TOE DANCING ACADEMY
"We Represent 500 Children a Week"
1953 1/2 West Carson St., Torrance

THRIFT - D - LUX CLEANERS
1530 Cravens Ave., Torrance

SOUTH BAY ELECTRIC
1504 Fern Ave., Torrance

EVY LAIN BEAUTY SHOP
1655 Gramercy, Torrance

RELIABLE BRAKE SERVICE
24710 Crenshaw Blvd., Torrance

SEEMAN STUDIO
1415 Marcelina, Torrance

PROFESSIONAL BEAUTY SALON
21531 Figueroa St., Torrance

FORTUNE HOMES, INC.
21724 Figueroa St., Torrance

MAPLE MIRROR BEAUTY SALON
21516 S. Main, Torrance

JOHNSON SAWDUST CO.
525 Maple Ave., Torrance

MARY'S COLOR BAR
1424 Marcelina Ave., Torrance

THE ROBISON CO.
2008 Carson St., Room 210, Torrance

PROFESSIONAL LUBRICATION
1726 So. Prairie Ave., Torrance

MEL - O - DEE MUSIC CENTER
1343 El Prado St., Torrance

ARRON ALARM SYSTEMS
2115 Torrance Blvd., Torrance

LARSEN'S PISTOL RANGE
20441 Earl St., Torrance

BARNES-VLOEBERGH'S CO., Painting Cont.
21313 Budlong, Torrance

A FRIEND

JAMES POST CO.
1409 Marcelina Ave., Torrance

GARSH AUTO SUPPLY
1324 Sartori Ave., Torrance

Quality Aluminum Awning—Screen Mfg. Co.
23206 Mariposa Ave., Torrance

MAICO HEARING SERVICE
1268 Sartori Ave., Torrance

NETA'S TOTS & TEENS
MOORE'S WOMEN'S WEAR
1272-74 Sartori Ave., Torrance

TURPEL INSURANCE CO.
1124 "B" Crenshaw Blvd., Torrance

SUNDAY'S DATELINE

Cyrano's Coming
Attraction
**THE WILDER BROTHERS
AND ONE DUDE**

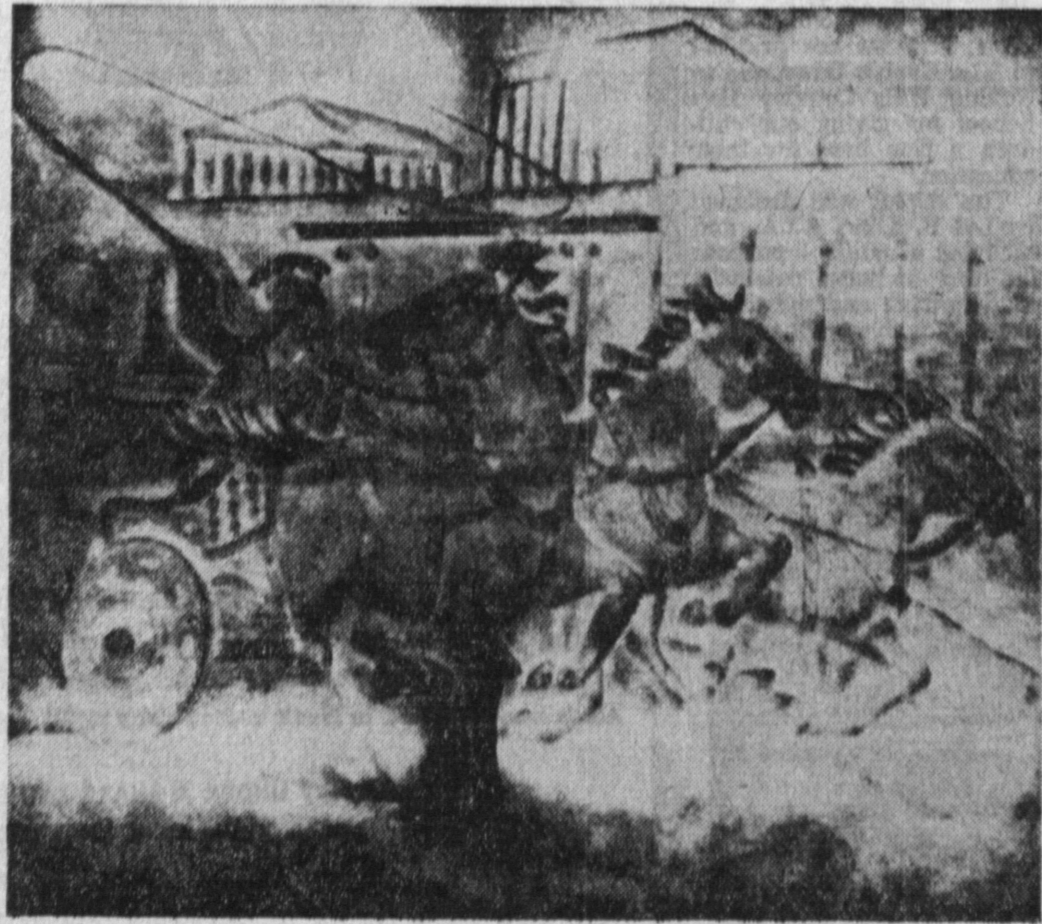
HARBOR
DRIVE-IN
THEATRE
23327 SO. VERMONT AT SEPULVEDA

Sunday, Monday, Tuesday
April 21, 22, 23

**UPSTAIRS &
DOWNSTAIRS**

Starring
Mylene Demongest
and

Jack Palanca in
**WARRIORS
FIVE**



BY TED STEPHENS

TOURNAMENT TALK — Plans for the 3rd annual Pen & Quill Hotel Golf Tournament, to be held May 13 at Alondra Park Country Club, are discussed at the Manhattan Beach hostelry by K. T. Stevens, star of ABC-TV's "General Hospital" series, and Robert Reuben, president of the Pen & Quill.

Sun., Mon., Tues.
April 21, 22, 23
ROAD
PRESSURE POINT
Bobby Darin, Sydney Pollack
and
**IT HAPPENED
IN ATHENS**
Jayne Mansfield
SWAP MEET
Wed., Sat., Sun.
8:00 A. M. - 4:00 P. M.
★ ★
DA 4-2664
DRIVE-IN THEATRE
Redondo Beach Blvd.
Bet. Crenshaw & Arlinnton

MONDAY NIGHT BOSSA NOVA NIGHT
FREE DANCING LESSONS BY
KEN AND SALLY PERKINS OF THE
ARTHUR MURRAY STUDIOS

Presenting THE LEW LAROCCA TRIO, Featuring

Frankie St. Claire Caesar's LOUNGE

4111 Pacific Coast Hwy., Torrance — Phone 378-8511