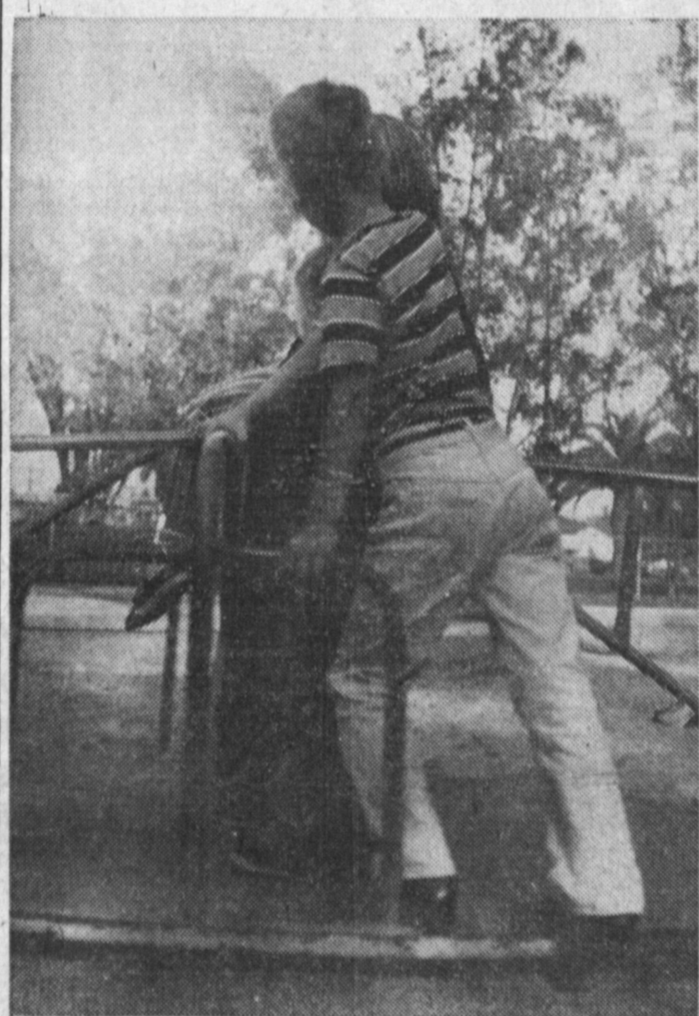
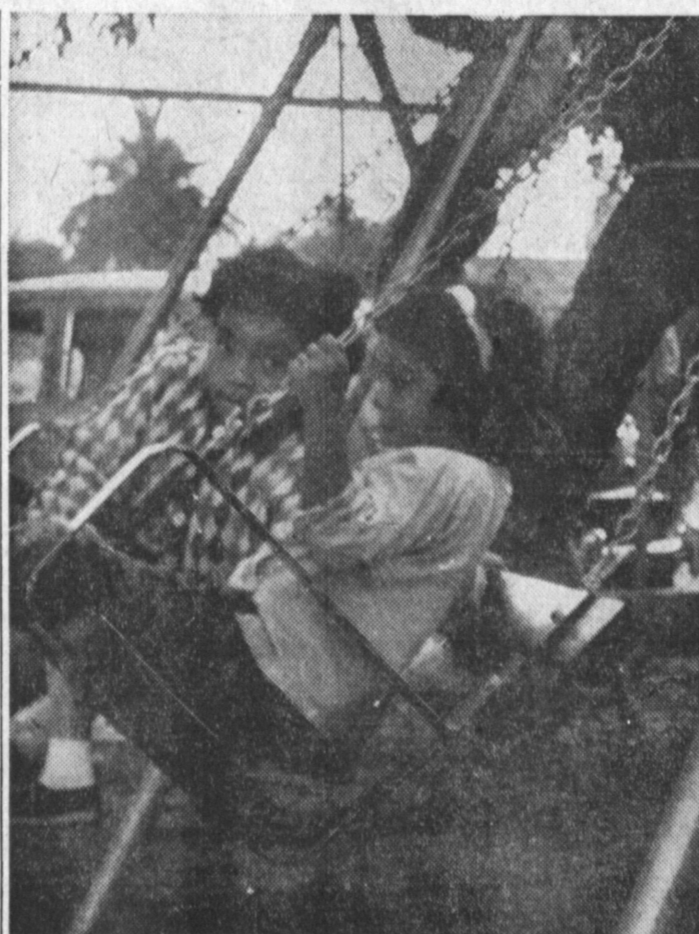


TORRANCE PICTORIAL



A CHILD'S WORLD is largely play, and Torrance has playgrounds for its children. In eight of the above pictures on this page, you can see some of Torrance's children enjoying themselves at play in Torrance Park. We didn't get their names because they were having too much fun to be bothered. Why don't you look carefully to see if there's anyone in the pictures that you know?
—PRESS photos by Gordon Akers

WE LIKE THE PICTURE above and the one at extreme right because they show the boy-to-boy and man-to-boy relationships that are built so strongly by the Boy Scouts. Above, David Romsey shows Russell Onto the ins and outs of typing a sheep bend knot, a demonstration of how older Scouts

help the younger ones. At extreme left, Scoutmaster Ralph Manahan congratulates David upon becoming an Eagle Scout. The man-to-boy relationship soon will blossom into a warm man-to-man friendship. The Scouts build friendships that last for lifetimes.
—PRESS photos