



ASSORTED FROZEN
**BANQUET
CREAM PIES**
25¢ Banana, Coconut,
Butterscotch,
Chocolate, Lemon,
Strawberry

COOKING - SALAD
**WESSON
OIL**
1/2 oz. 33¢
1 qt. 33¢

simply can't get enough of them!
peanuts 3 pk. 99¢
peeled halves. Easy to serve! No. 2 1/2 can
halves 25¢
giant meal in a jiffy! 5 1/2 oz. pkg.
Romanoff 43¢
healthful for the family Quart bottle
Prune Juice 39¢

BOOTS
FOOD
25¢
NON
TICKETS
88



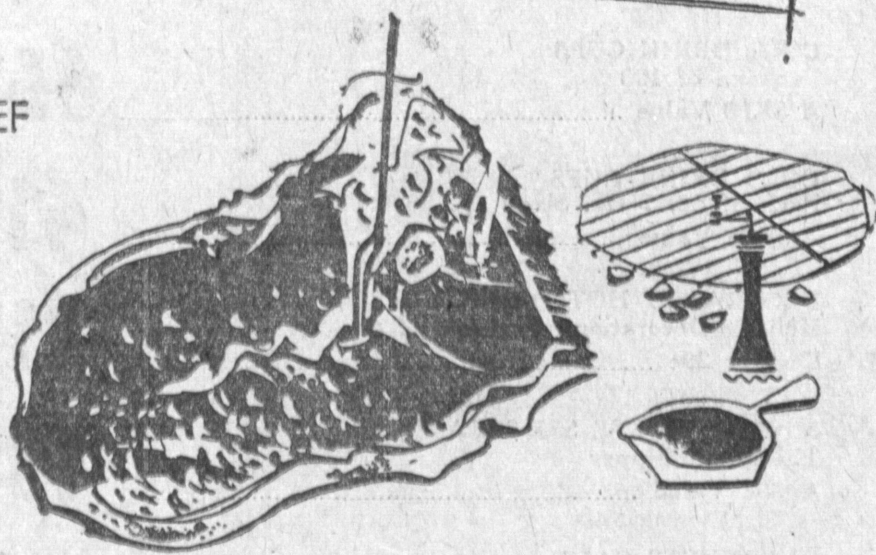
RIPE
**GOLDEN
BANANAS**
9¢ lb.

SOLID HEAD
LETTUCE
9¢ head



FARM FRESH
**LARGE
"AA" EGGS**
doz. **35¢**

U.S.D.A. "CHOICE" BEEF
**ROUND
STEAK**
69¢ lb.



U.S.D.A. "CHOICE" BEEF
**SWISS
STEAK**
69¢ lb.

U.S.D.A. "CHOICE" BEEF
**RUMP
ROAST**
bone in **69¢** lb.

U.S.D.A. "CHOICE" BEEF
**CUBED
STEAK**
98¢ lb.

U.S.D.A. "Choice" Beef. Perfectly aged for tenderness and flavor.

Boneless Round Steak 89¢ lb.

U.S.D.A. "Choice" Beef. Expertly trimmed to give you good eating meat.

Boneless Rump Roast 89¢ lb.

Ground fresh hourly. A versatile choice for many delicious recipes.

Fresh Ground Round 69¢ lb.

EASTERN GRAIN FED
**PORK LOIN
ROAST**
7-rib portion **39¢** lb.



EASTERN GRAIN FED
**PORK
CHOPS**
rib and **49¢** lb.

Eastern Grain Fed. Roast slowly for pennywise eating pleasure!
Loin End Pork Roast 49¢ lb.

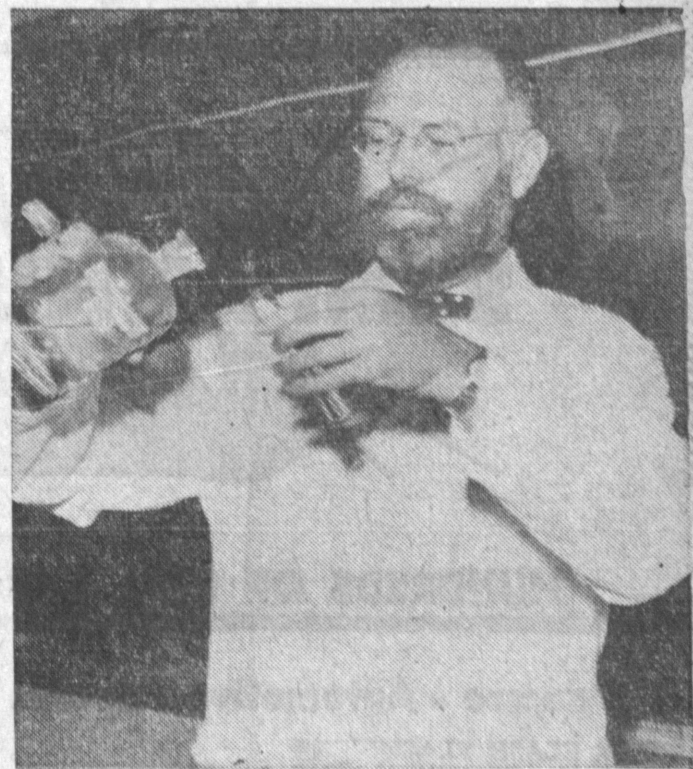
Eastern Grain Fed Pork. Cook slowly in sweet and sour sauce for good eating!
Center Cut Rib Chops 69¢ lb.

Barbecue these flavorful pork ribs for fine and festive finger food!
Country Style Spare Ribs 59¢ lb.

Armour Star for breakfast!
SLICED BACON 1 lb. pkg. sliced 55¢
Luer Skinless Links.
LINK SAUSAGE 8 oz. pkg. 4 pkgs. \$1

McLean's shrimp. Frozen.
BREADED SHRIMP 8 oz. pkg. pkg. 59¢
Northern. A seafood favorite. Frozen.
HALIBUT STEAKS 12 oz. pkg. lb. 69¢

Menu variety! Flash frozen.
MEAT DRUMSTICKS 12 oz. pkg. pkg. 59¢



EASY DOES IT in the chemistry laboratory, where all must be neat and precise. Shown above is Dr. Jack Hileman, of Torrance, chemistry instructor at El Camino College. Dr. Hileman's research on metal carbonyls has brought national recognition.

Realtors Issue Statement on Pitfalls on New Tax Bill

The Torrance - Lomita Board of Realtors, in a desire to acquaint home-owners with proposed tax legislation now pending in Washington, has issued the following statement:

Recent recommendations to the Congress for changes in federal Income Tax Laws are of vital interest to all current and prospective homeowners.

A homeowner will be adversely affected by one change which, if approved by the Congress, will take away his right to deduct all of certain expenses in computing net income for tax purposes.

These expenses which are now fully deductible are:

- a. interest payments on home mortgages
- b. interest charges on consumer installment purchases and personal loans
- c. real property taxes
- d. other state and local taxes
- e. contributions to churches and to charities
- f. casualty losses to property from wind, flood, weather, fire, etc.
- g. medical expenses

The treasury is asking Congress to change this to permit deduction only to the extent that they exceed 5 percent of personal income. Thus if taxable income is \$8,000 and there are \$1,400 in deductions, then deductions of only \$1,000 would be permitted. Under the present law the entire \$1,400 is deductible.

In addition only those casualty losses and medical expenses in excess of 4 percent of income are included in listing the deductions which are subject to the 5 percent rule.

The tax bill provides for some tax reduction in order to "sweeten" this cutback in itemized deductions. However, there is always the risk that budget deficits and resulting inflation may force Congress to increase the rates. But once deductions are disallowed, the chances of getting them back are very slim.

The deductions allowed for home mortgage interest and real estate taxes were approved by the Congress many years ago as an inducement for the growth of home ownership.

As a result the United States is a nation of 60 percent home owners. When homes are bought, homeowners are influenced by the fact that they can deduct interest on the mortgage and all the real property taxes. Now the treasury wants them to deduct less at a time when expenses and taxes are increasing.

Homeowners should make known their views on this important matter. They should write to Cecil R. King in the House of Representatives, House Office Building, Washington 25, D.C.

Urge him to express his opposition to this threat to

10,000 PIECES OF PAPER

Paper work required for space age projects in American industry is multiplying practically with the speed of light. One typical month B. F. Goodrich Aerospace and Defense Products alone generated 10,000 pieces of paper to satisfy the quality control history requirements of one major component of a well known missile.

Employers may contact the college student placement office to list available jobs.

Alondra Park Blooms for Orchid Show

Hundreds of orchid blooms, ranging from tiny species to huge cattleyas of various hues, will transport visitors to the South Bay Spring Orchid Show into a "Wonderful World of Orchids." Plants, native to various far flung parts of the world, will be displayed in an unusual central display.

Cosponsored by the South Bay Orchid Society and the Los Angeles County Department of Parks and Recreation, the show will be staged Saturday and Sunday, March 9 and 10 in the Alondra Park Recreation Building, 3535 Redondo Beach Blvd. It is open to the public without charge with show hours Saturday being from 1 to 10 p.m. and on Sunday from 11 a.m. to 7 p.m.

Sunday morning from 9 to 11 a.m. as been set aside for photography hobbyists.

Orchid Princess of the show this year is nine-year-old Mellea Ann Hennrich, youngest member of the society who, despite her age, is an amateur grower—a hobby which is encouraged by her parents, Mr. and Mrs. Donald Hennrich of 5207 Lenora St., Torrance. She will have some of her plants on exhibition.

Any amateur or hobbyist, whether a member of the society or not, who desires to enter plants, either for exhibition or ribbon judging, is invited to bring them to the exhibition building Friday night or before 10 a.m. Saturday. This particularly applies to persons using orchids in table or mantle arrangements or corsages featuring orchids of any variety.

Students Seek Part Time Jobs

With an influx of job-seeking students, a mounting problem faces Mrs. Alma Spector, student placement office secretary at El Camino College.

High School graduates who are relatively inexperienced need jobs in which they may be trained. All kinds of part-time work is needed for afternoons, evenings and weekends.

Approximately half the jobs listed with the placement office have been filled by college students.

These include jobs in accounting, bookkeeping, art work, cashiering, delivery and desk clerks, estimators, laboratory assistants, post office workers, sales clerks, waiters, warehousemen and office clerks.

DEL AMO
SHOPPING
CENTER
CORNER OF
HAWTHORNE &
SEPULVEDA

MAGIC
CHEF