

This Is Your Torrance: In the Beginning . . .

(Compiled by the League of
Women Voters, Torrance)

From a hilltop today, you can look down on Torrance and see a city's panorama of rooftops, schoolyards, busy highways, and to the west the blue waters of the Pacific.

Less than 200 years ago, the scene was one of grassy hills, seagulls, and tropical forests. The only inhabitants were bears.

Earliest recorded history goes back to 1785. At that time, Juan Jose Dominguez, retired Spanish soldier, was given grazing rights by Gov. Fages under the authority of the King of Spain, to a 43,000-acre parcel of land which became the site of California's first rancho.

That site included the area now known as Torrance.

By the time Juan died, California had passed from Spanish to Mexican rule and his cattle-grazing rights to the land were bequeathed by Gov. Sola to Juan's sole heir, his nephew, Cristobal.

Upon Cristobal's death three years later, in 1825, the land was managed by his 22-year-old son, Don Manuel Dominguez. Other heirs were Cristobal's widow, another son, and four daughters.

Ten years later, Don Manuel bought his brother's rights.

When the land passed from Mexico to the United States, Don Manuel and other members of his family filed their claim with the U.S. land commissioners, and received 24,000 acres which became the foundation of the Dominguez estate.

Having held many governmental offices as a Mexican citizen, Don Manuel continued to be active as an American.

He was a member of the first Constitutional Convention at Monterey which gave California its first constitution, and served as a supervisor of Los Angeles County.

Following Don Manuel's death in 1882, his estate was divided equally among his six daughters. The land which was destined to be the City of Torrance was purchased from the holdings

of one of these six daughters.

For many years, it was ranch land.

Beans and wheat thrived in the fields and sheep grazed in the pastures.

Watch Torrance Grow!

Torrance is growing. That we know. So read The Press to watch it grow.

The population of Torrance was 108,900 on November 1, 1962, and by December 10, 1962, it was 114,300 for a growth of 5,400 persons in 404 days.

By dividing 404 into 5,400, the answer seems to be 13.39 with 44 left over.

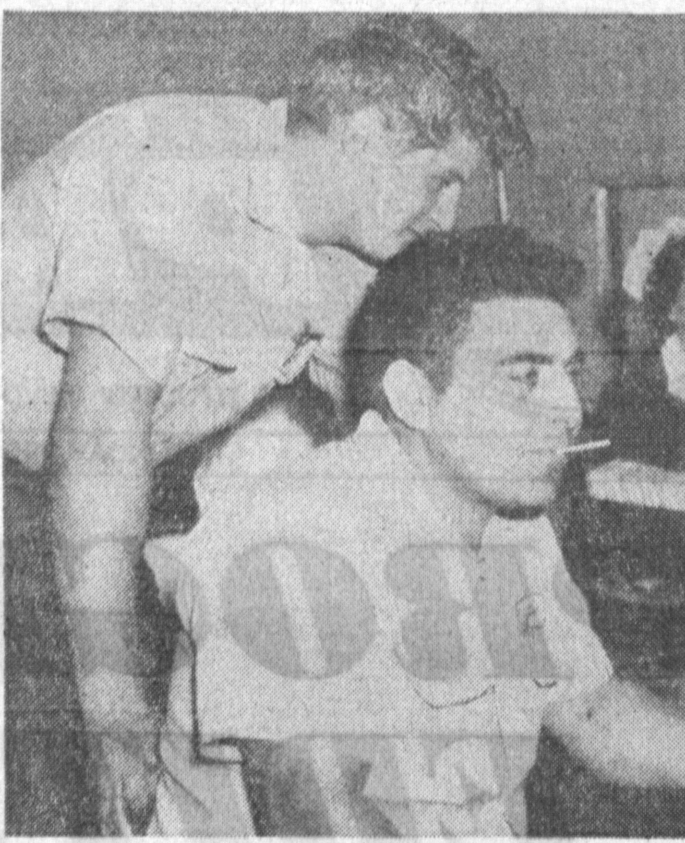
It's pretty easy to deal in percentages of a cold, hard, mathematical figure, but it is much more difficult to cut a warm living person into percentages.

So, let's lop off that 39 hundredths and says for the sake of argument, that the average growth of Torrance over the period November 1, 1961, to December 10, 1962 (404 days) was 13 persons per day.

Multiplying the magic number 13 by the 69 days which have elapsed since December 10, 1962, you are one of 115,197 persons living in Torrance today.

SOUTH COAST INCOMES
Families with incomes of more than \$7,000 account for 49.4 percent of all the families in the South Coast area. For the nation, this figure is 35.2 percent.

DECEIT
We are deceived; we deceive ourselves. —Goethe



THEY GAVE BLOOD in Torrance at a recent Bloodmobile. Robert Dorr (left) was interested in donating his blood because of the fact that his wife received blood through the Red Cross following childbirth. Dorr's fellow worker, Eddie Medina (seated) joined him in giving a pint. The Red Cross will have another bloodmobile in Torrance, Feb. 28, at the Elks Lodge.

Temporary Assessor's Office Opens in Torrance, March 7

The temporary branch office in Torrance of the Los Angeles County Assessor will be opened in City Hall, on Torrance Blvd., on Thursdays of each week beginning March 7 until May 2, during the hours of nine in the morning until 4:30 in the afternoon.

Assessor Philip E. Watson said that this year because of simplified procedures, only 44 temporary offices will be required. The personnel of the Torrance office will assist persons to fill out forms due back in the assessor's office between the first Monday of March and the first Monday in May, which is the sixth.

Last year, said Watson, 71 needed, many of them five days a week, for an average of three months.

Watson says that this represents a saving of 5,487

man-days in this year's operation of temporary branch offices, which he interprets as equivalent to 100 men working five days a week for ten weeks.

The savings, adds Watson, is credited to his introduction of electronic computation of household furnishings assessments, plus the filing of veteran exemption claims and landlord reports by mail, and the elimination of deputy appraisers who formerly assessed personal property and took veterans' applications.

HIGHEST WELL
A drilling crew is sinking a wildcat well into an 11,000-foot mountain in Colorado. If it strikes oil, it will be the world's highest producing well.

Use Torrance Press classified ads. Phone DA 5-1515.

Growth Is the Keynote For Hi-Shear in 1963

In 1963, Hi-Shear Corp. scarcely resembles its appearance in 1956, the year the company first settled at Torrance Municipal Airport.

Today, Hi-Shear has grown under the direction of President George S. Wing, to a 138,000 square foot facility housing the general and corporate offices, factory and research laboratories on an 18.5 acre site with 485 skilled employees. Later in 1963, Hi-Shear will enjoy its 20th anniversary.

Completed in late 1962, Hi-Shear's enlarged engineering offices have been doubled in size while its test and research laboratories have been expanded and modernized to rate as one of the finest privately-owned research centers possessed by any manufacturer of comparable size.

Also placed in operation during the past month is the new metal finishing building, fully equipped for a variety of parts cleaning and plating operations.

Today sales are ahead of last year and a favorable trend is forecast for the balance of 1963. Vice President of Sales, Guy Nash, said this upward trend is showing the result of the accelerated efforts made in new-product developments over the past several years.

To maintain close touch with customers needs, Hi-Shear Corp. now maintains resident sales engineers in New York, Washington,

Torrance Construction \$50 Million in 1962

It is conservatively estimated that the total volume of all building and construction in the South Coast area during 1962 was \$250,000. This includes work not covered by building permits, as well as that which is included in permits.

The Security First National Bank estimates that Torrance accounted for about 19 percent of that total, which would be close to \$50 million total for the city of Torrance alone.

GOLDEN EAGLE
The golden eagle inhabits the California foothill regions and winters in areas where deer winter.

D.C., Seattle, Dallas, Atlanta, St. Louis and San Francisco.

While Hi-Shear always has benefited by sales to overseas customers as the result of the NATO procurement program, first concentrated sales efforts will be undertaken starting in 1963 to really tap a potentially huge European market.

Along with basic fastener products and related installation tooling, Hi-Shear now is marketing specialized infrared quartz heat lamp components and complete heat lamp furnace tailored to customer requirements, connectors for flat conductor cable, special electronic connectors, portable belt po-

lishers for pipe and bar stock and a complete line of explosively actuated ordnance products for space vehicles.

Where company efforts were formerly concentrated in high strength proprietary airframe industry alone, the fastener products for the development of new proprietary products under the direction of Vene Darby, Chief Engineer, are now finding many applications in the electronics, marine ship construction and metalworking industries.

Transland Aircraft, a division of Hi-Shear and of Hi-Shear and also located at the Hi-Shear facility, is considered the larg-

est U.S. manufacturer to the aerial applying industry for its ever broadening line of applying equipment for crop dusting and spraying airplanes.

Hi-Shear's present management in addition to Wing, Nash and Darby, include Executive Vice President and Treasurer, Allan J. Secretary and Legal Counsel, William Halpern; Vice President Manufacturing, Albert E. Anderson; Controller, James Rome; Purchasing Agent, Sterling Souder; Quality Control Manager, Roy Fitting; and Personnel Manager, Fred Pearce.

South Bay Building Materials

- MASONRY Materials . . .
- CONCRETE Blocks . . .
- CEMENT Rock Sand . . .
- BUILDING Stone . . .

★
**OPEN
SUNDAYS**
10-5 p.m.
★

- PLASTERING Materials
- ALL OTHER BUILDING SUPPLIES

SOUTH BAY BUILDING MATERIALS

24418 West Sepulveda Blvd., Torrance

DA 6-9541

From

MAGNAVOX

An Invitation

What are the things that thoughtful people in a community want for themselves?

They want jobs that bring widespread benefits to the community.

They want business to be healthy and profitable.

They want honest and efficient government.

They want that government to be supported by a strong majority of alert and well-informed voters who have the best interests of the community at heart.

They want adequate community facilities, such as stores, banks, utilities, transportation, hospitals, health facilities, and commercial services.

They want a social and cultural atmosphere in which people enjoy living and working—they want good schools, churches, libraries, and healthful recreational facilities.

Magnavox is working to make a better future for Torrance and for the United States.

By the cooperation of all citizens and by the intelligent use of our knowledge we can form our community and our nation toward continual success.

By wanting a better life, and working to make that better life a reality, thoughtful citizens will create progress for us all, just as surely as the dawn comes on each new day that we live.

MAGNAVOX RESEARCH LABORATORIES

2829 Maricopa • Torrance

HI-SHEAR PRODUCTS INCLUDE:

- PRECISION FASTENING SYSTEMS
For the airframe, missile, electronic and ship-building industries.
- ELECTRO-COMBUSTION DEVICES AND SYSTEMS
For land, sea and space applications such as: missile tie-down to launching pads and stage separation.
- POWER EQUIPMENT AND TOOLS
For the automatic and high speed installation of precision fasteners. Tube and bar stock portable polishers.
- AERIAL APPLYING EQUIPMENT
For use on agricultural aircraft to dispense chemicals, seed and fertilizer.

OUR TOOLS AND OUR TALENTS

- High-Shear's ability to devise and develop precision hardware and other products for use in the U.S. and NATO countries is based on three essential assets . . .
- A MODERN, FULLY EQUIPPED FACILITY
- A WELL BALANCED MANAGEMENT
- AND MOST IMPORTANT, SKILLED EMPLOYEES
- Our Personnel Office is always open for interviews to qualified applicants with skills and experience. U.S. citizenship is desirable but not essential. Hi-Shear is an equal opportunity employer.

HI-SHEAR CORPORATION

2600 WEST 247TH STREET TORRANCE, CALIFORNIA
TORRANCE MUNICIPAL AIRPORT