



Al Ortale Rambler Does It Again!

SELLING '63 RAMBLERS AT MODEL YEAR END PRICES

UNHEARD OF SAVINGS ON ANY '63 RAMBLER . . . PLUS . . . EASIEST TERMS
Largest Selection of New Ramblers in South Bay-Harbor Area . . . Immediate Delivery

'63
RAMBLER AMERICAN 2-DOOR
\$1772
FACTORY EQUIPPED DELIVERED IN TORRANCE

'63
RAMBLER CLASSIC WAGON
\$2265
FACTORY EQUIPPED DELIVERED IN TORRANCE

'63
RAMBLER AMBASSADOR 4-DOOR
\$2271
FACTORY EQUIPPED DELIVERED IN TORRANCE

As Low As
\$199
Down and
\$48⁷³
Per Month

HERE IT IS!

JANUARY PRE-INVENTORY SELECT USED CAR CLEARANCE



PRICES SLASHED

ON EVERY USED CAR IN STOCK
SAVE—SAVE—SAVE

'62 International Scout **\$1495**
Only 6000 miles. Like new.

'59 Oldsmobile '98' Holiday **\$1795**
Full pwr., air cond., low mileage

'60 Oldsmobile Fiesta Wagon **\$2095**
Auto., full power, air cond. Real luxury.

'58 Edsel Station Wagon **\$695**
6-pass., auto., power steering, R&H

'60 Chevrolet Impala Hardtop **\$1695**
Auto., R&H. Low mileage.

'59 Metropolitan Hardtop Coupe **\$795**
Black and white finish. Original.

'60 Chevrolet Bel Air V-8 **\$1495**
Automatic, R&H, 1 owner.

'60 Corvair **\$1095**
Std. shift, R&H, low mileage.

AL ORTALE RAMBLER
Your South Bay International-Scout Truck Headquarters All Models on Display

GOING . . . GOING ALMOST GONE LAST of the '62 RAMBLERS

NEW '62 RAMBLER CONVERTIBLES
LOW AS **\$2290** FULL PRICE

BUY NOW SAVE \$\$\$

AL ORTALE RAMBLER



OPEN 7 DAYS 'TIL 9 P.M.
20611 HAWTHORNE BLVD.
1/2 MILE NORTH OF TORRANCE BLVD.
FR 1-1244

"Reliability - Integrity - Confidence"
Two Locations to Serve You
TORRANCE

OPEN 7 DAYS 'TIL 9 P.M.
1885 TORRANCE BLVD.
2 BLOCKS OFF WESTERN AVENUE
FA 8-9222



QUALITY CARS at the LOWEST PRICES

at SODERSTROM FORD

Check These Fine Used Cars Now

'58 FORD STAT. WAGON
Automatic, radio, heater, power steering.
\$949

'61 FORD GALAXIE
Club Victoria. V-8, automatic, radio, heater, power steering.
\$1899

'59 CHEV. V8 STAT. WAG.
3 passenger, automatic, radio, heater, power steering.
\$1549

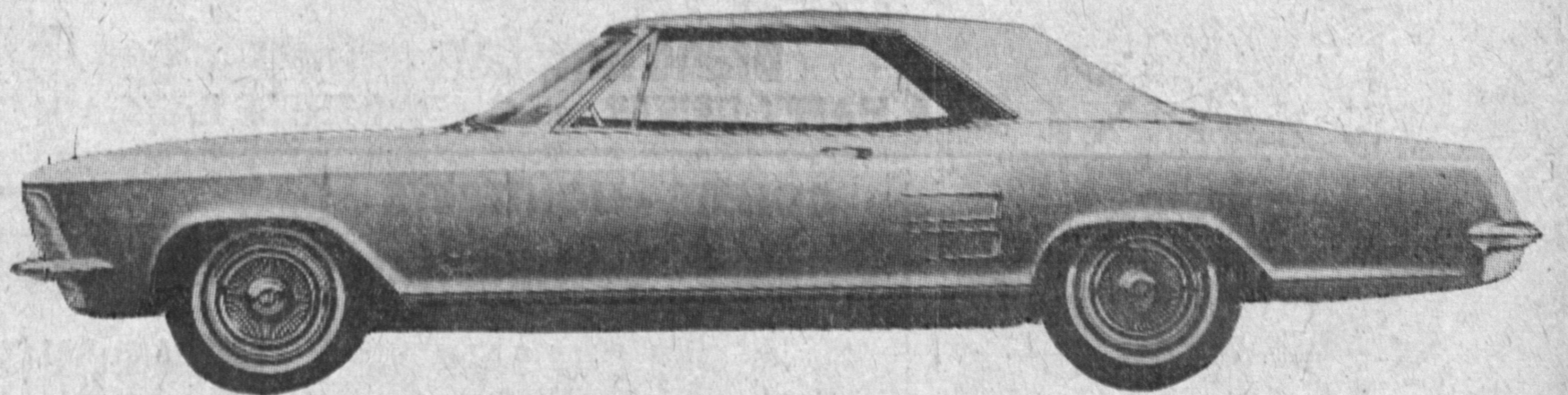
'60 FORD BUS. COUPE
4 cylinder, stick shift, Low mileage.
\$899

'62 T-BIRD
Full power, air conditioning.
\$3599

'59 FORD
8 cylinder, automatic, radio, heater, excellent second car.
\$799

CHAS. SODERSTROM FORD
16th and Pacific SAN PEDRO TE 2-5315
—CLOSED SUNDAYS—

The only totally new automobile for 1963—the Riviera by Buick! See it now in our Showroom!



BUTLER BUICK

400 S. Sepulveda, Manhattan Beach

Open 7 Days 9 to 9

FR 4-8968

SP 2-1431

PUBLIC LIQUIDATION

These cars will be liquidated. All credit accepted. All cars will be guaranteed for six months. Example of Repossessions: 1961 Lancer 2-Door Hardtop, radio, heater, torqueflite trans. If no cash for down, you can pay \$21.40 monthly and assume balance of \$100.

- '62 FALCON RANCHERO
- '61 LANCER WAGON
- '61 DODGE PIONEER
- '61 VALIANT 4-DOOR
- '61 CHEV. MONZA COUPE
- '61 DODGE PHOENIX CONV.
- '61 FALCON WAGON
- '61 PLYMOUTH WAGON
- '60 FALCON 2-DOOR
- '60 DODGE MATADOR
- '60 CHEVROLET WAGON
- '60 DODGE POLARA
- '60 CHEVROLET 4-DOOR
- '60 COMET 4-DOOR
- '60 CORVAIR 4-DOOR
- '60 VALIANT 4-DOOR
- '60 FALCON WAGON
- '60 STUDEBAKER LARK
- '60 STUDEBAKER WAGON
- '60 RAMBLER WAGON
- '59 PLYMOUTH 2-DOOR
- '59 FORD WAGON
- '59 RAMBLER 4-DOOR
- '59 FORD 4-DOOR
- '59 CHEV. IMPALA
- '59 DODGE 2-DR. H.T.
- '59 OPEL 5-DOOR
- '59 THUNDERBIRD
- '58 PONTIAC CONV.
- '58 FORD WAGON
- '58 CADILLAC CP. DE VILLE
- '58 VOLKSWAGEN
- '58 DODGE 2-DR. H.T.
- '58 CHEV. IMPALA
- '58 PLYMOUTH 2-DOOR
- '58 EDSEL WAGON
- '57 RAMBLER WAGON
- '57 CHRYSLER NEW YORKER
- '57 MERCURY 2-DOOR H.T.
- '57 FORD 4-DOOR
- '56 FORD
- '55 CHEVROLET
- '55 FORD

\$25 WILL DELIVER ANY CAR

For Information Regarding Financing on Above Cars
PHONE MR. TALBERT, DA 8-1410
Pacific Acceptance Co.

1959 FORD. If no cash pay \$23.64 mo. plus assume balance of contract, \$824. Call Credit Dept. (Acceptance Division) SP 5-3082.

'60 FALCON 4-door, stick shift, \$44 delivers. If no other cash pay \$17 month and assume contract balance. Call Mr. Garrett, TE 1-5459.

1958 FORD wagon. If no cash pay \$19.82 mo. plus assume balance of contract, \$318. Call Credit Dept. (Acceptance Division) SP 5-3082.

'59 FORD TUDOR. Automatic drive. \$34 delivers. If no other cash pay \$15.75 per month and assume contract balance. Call Mr. Garrett, TE 1-5459.

1956 DeSoto. If no cash pay \$16.94 mo. plus assume balance of contract, \$396. Call Credit Dept. (Acceptance Division) SP 5-3082.

'59 DODGE V-8. Push button drive. \$40 delivers. If no other cash pay \$16.63 per month and assume contract balance. Call Mr. Garrett, TE 1-5459.

'31 Model A Coupe
Absolutely stock. Rebuilt engine, new clutch, rebuilt transmission. Good body and tires. New starting motor. \$250. 2509 Spreckles. 379-4435.

'58 FORD station wagon, 4-door, V-8, automatic, full power, \$38 delivers. If no other cash pay \$17 per month and assume contract balance. Call Mr. Garrett, TE 1-5459.

DON'T GO IN CIRCLES

USE A PRESS WANT-AD

TO BUY—TO SELL—TO TELL
Call DA 5-1515

A Courteous Ad-Taker Will Be Glad to Help You

First With The Most—Torrance Press DA 5-1515